

The background of the slide is a close-up, top-down view of several sliced oranges. The slices are arranged in a somewhat circular pattern, with the central slice being the most prominent. The orange segments are a vibrant yellow-orange color, and the white pith is clearly visible. The lighting is bright and even, highlighting the texture of the fruit.

**案例解读**

**——Primetime Nursery School**

# 建筑概况

地点: Sao Paulo, Brazil  
建筑师: Lair Reis

马尔西奥·高根 (Marcelo Kogan) 和 伊莉莎贝塔·莱昂 (Eugenia Leão)

项目团队: Beatriz Meyer, Carolina Castroviejo, Eduardo Chalabi, Eduardo Glycerio, Gabriel Kogan, Luciana Antunes, Maria Cristina Motta, Mariana Simas, Oswaldo Pessano, Renata Furlanetto, Samanta Cafardo, Suzana Glogowski

2001年 (始建于1980年) 创立MK27工作室, 被认为是巴西最重要的当代建筑师之一。

景观设计师: Renata Tili  
闪电项目: Marcelo Kogan, Beatriz Ennes

结构设计: Aluizio D'ávila

安装: Grau Engenharia

厨房顾问: Grau Engenharia

总承包: Fakiani Construções

用地面积: 900平方米

项目面积: 870.75平方米

项目年份: 2007

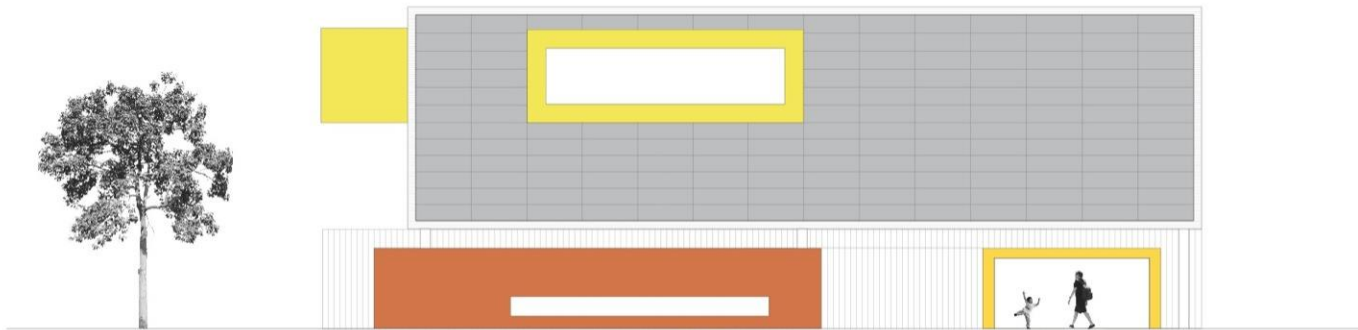




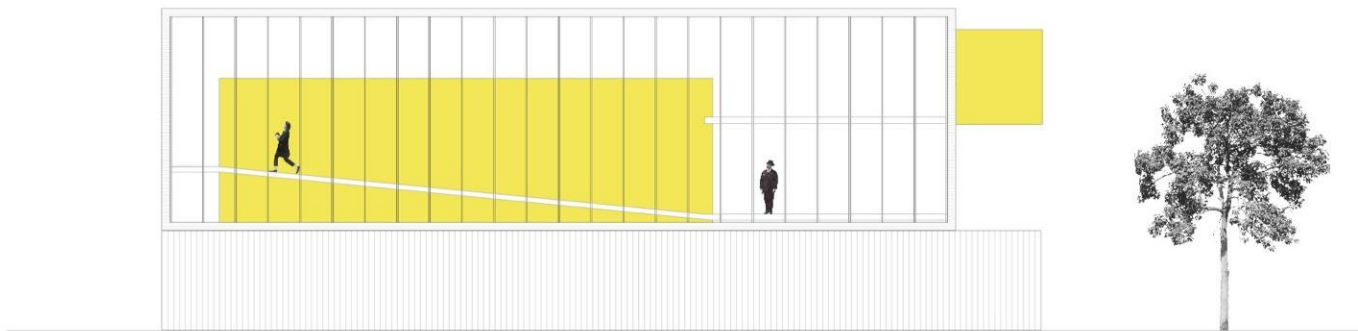
# 整体外观



NORTHEAST FACADE  
scale 1:200

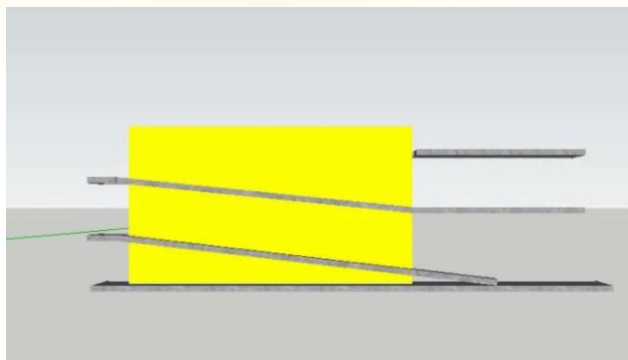


NORTHWEST FACADE  
scale 1:200



SOUTHEAST FACADE  
scale 1:200

# 循环斜坡



# 功能组成



活动



休息



储藏



厕所

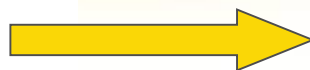
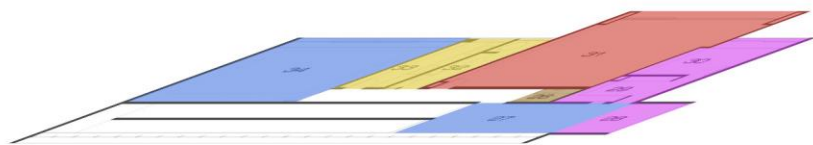


后勤

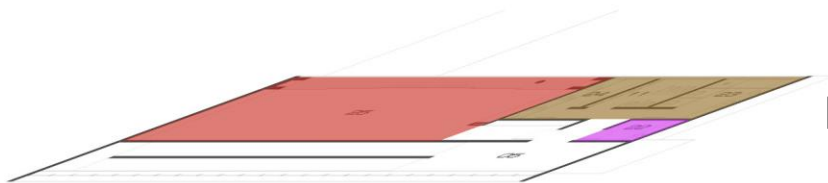


办公

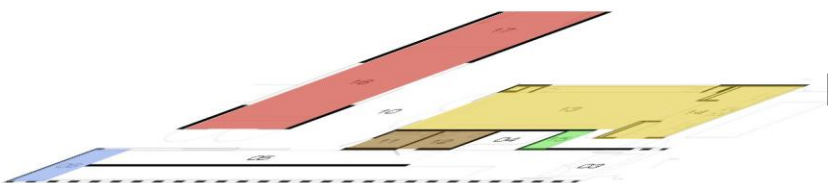
# 功能组成



休息与生活区



活动与休闲区



招待与用餐区



多功能厅与户外活动区

# 参考资料

- <http://www.archdaily.com/83269/primetime-nursery-school-marcio-kogan/>
- Google Earth





**THANKS**