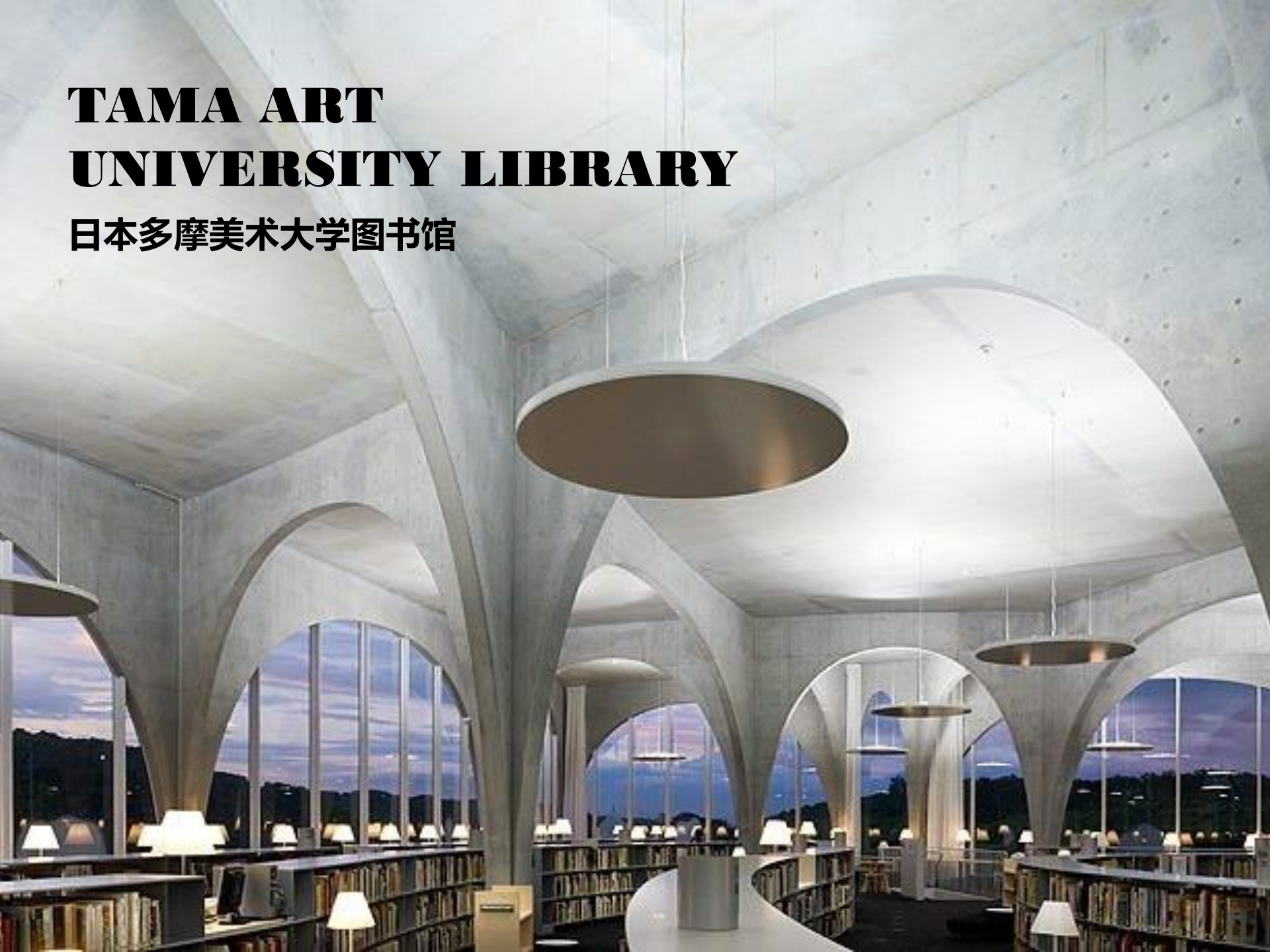
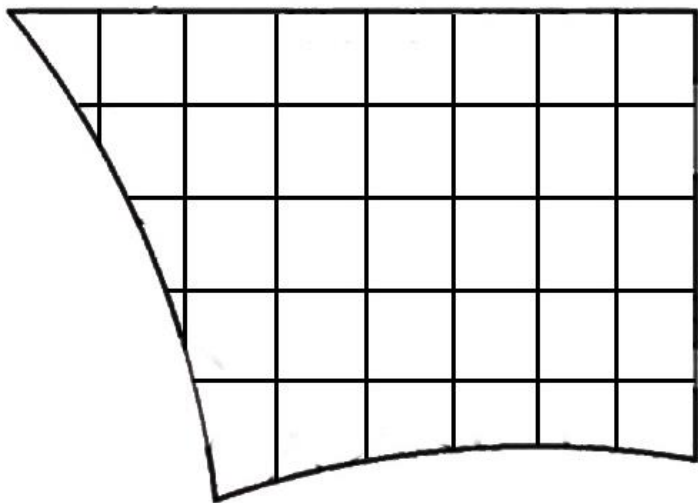


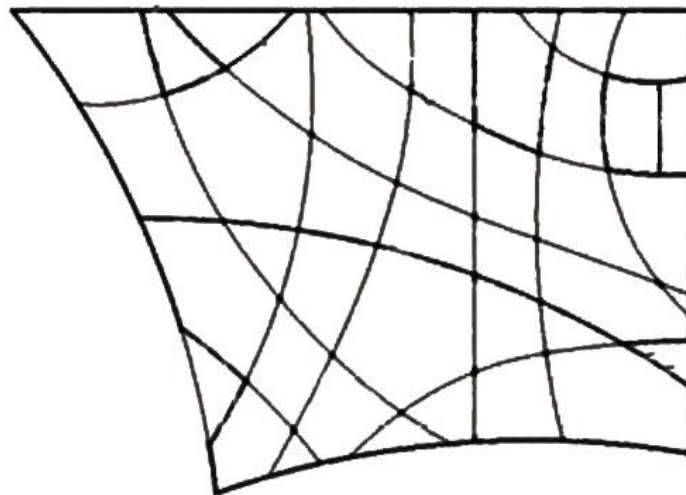
TAMA ART UNIVERSITY LIBRARY

日本多摩美术大学图书馆

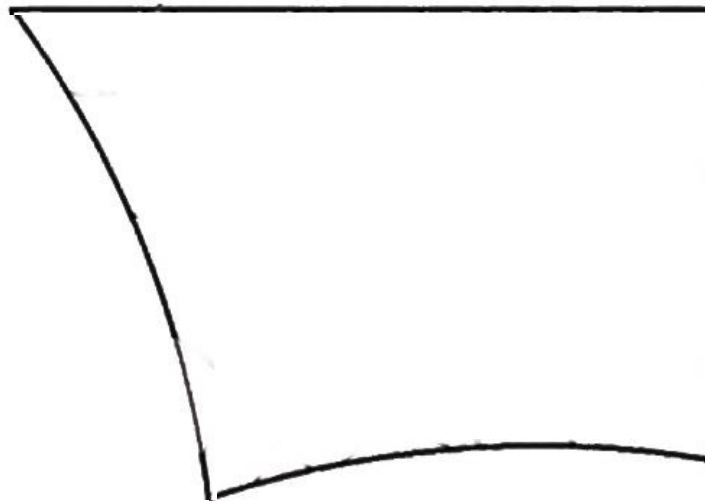
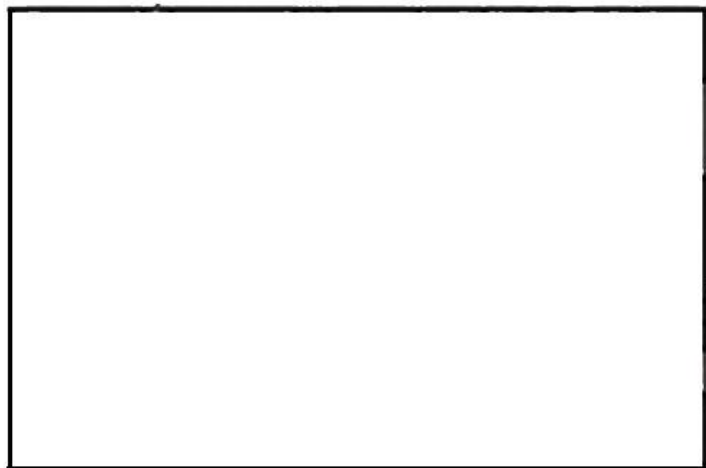
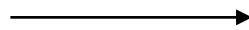




扭转



削减









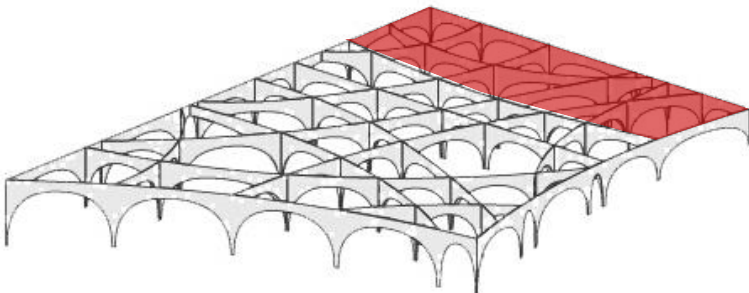
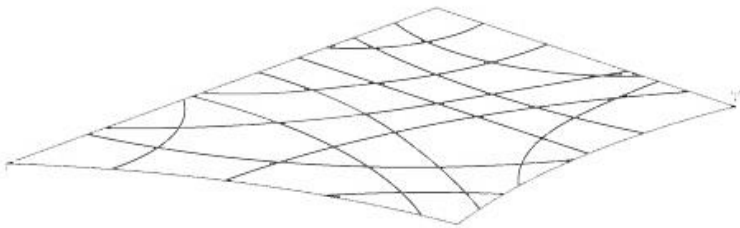
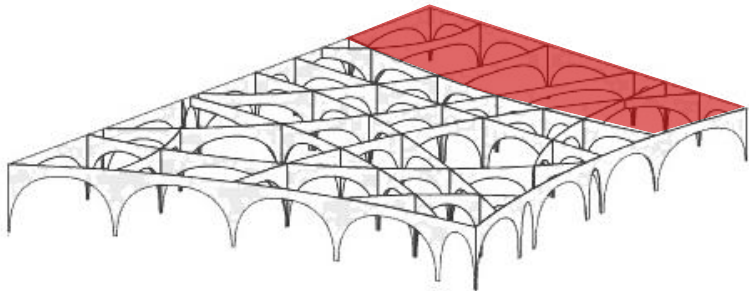
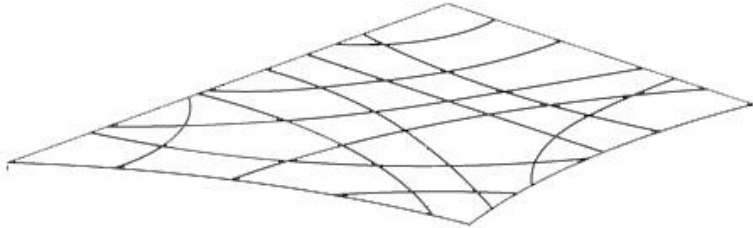
巴黎圣吉纳维夫阅览室



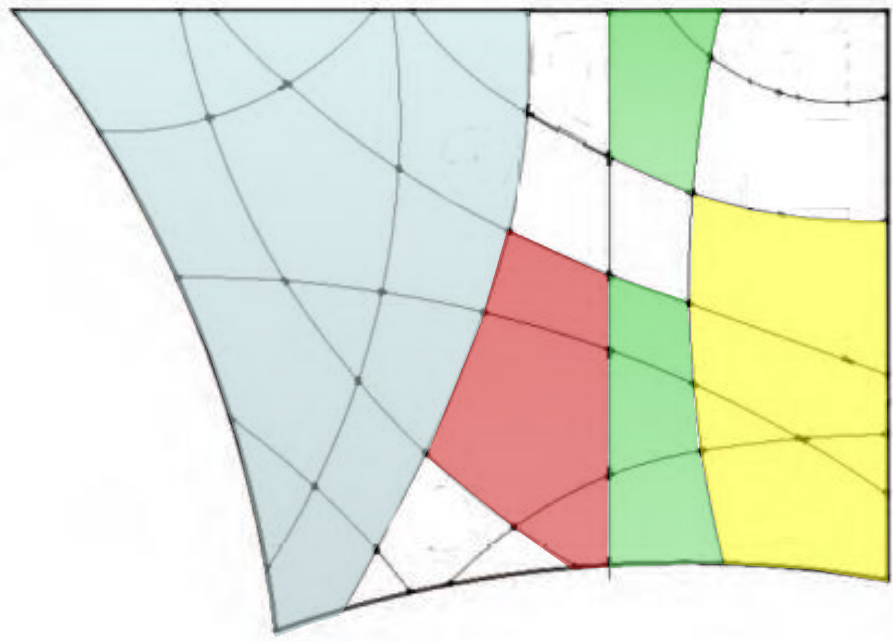
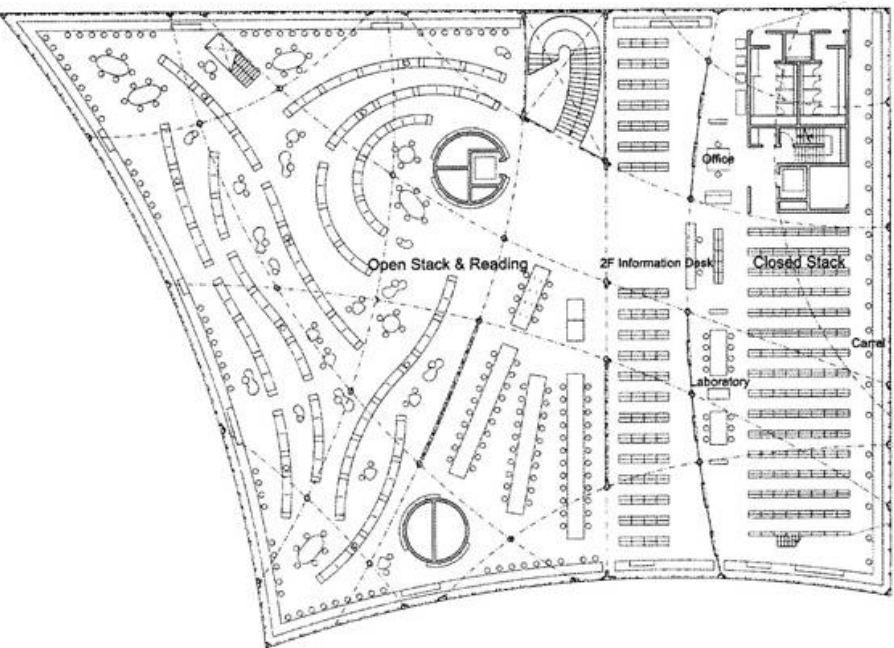
巴黎下水道图书馆



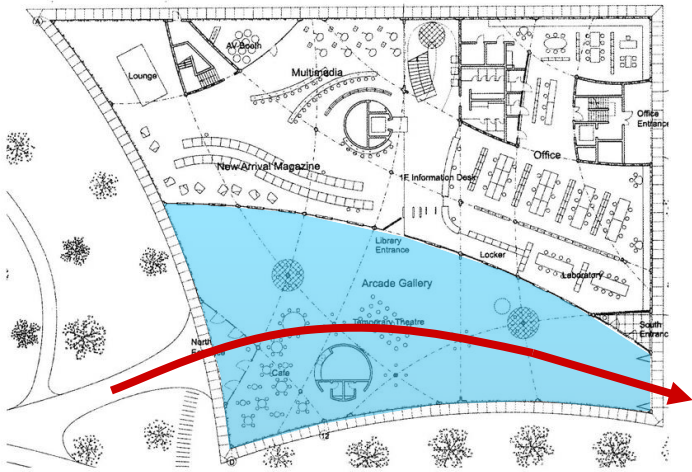
材料	钢架混凝土	铁构架
形式	平顶 由拱身与拱脚锚固的刚节点组成	圆形筒顶、铁柱



浮动网格







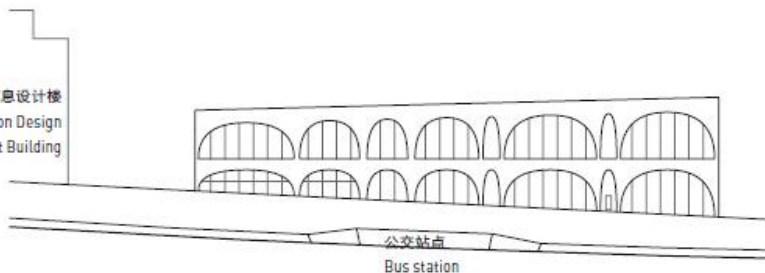


雕刻之森
Sculpture Garden

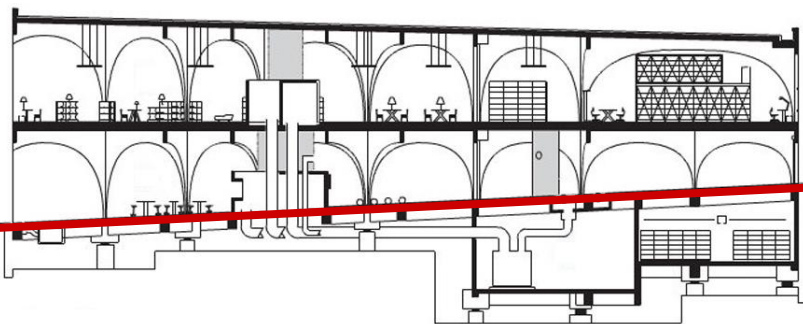


西立面 \ West elevation

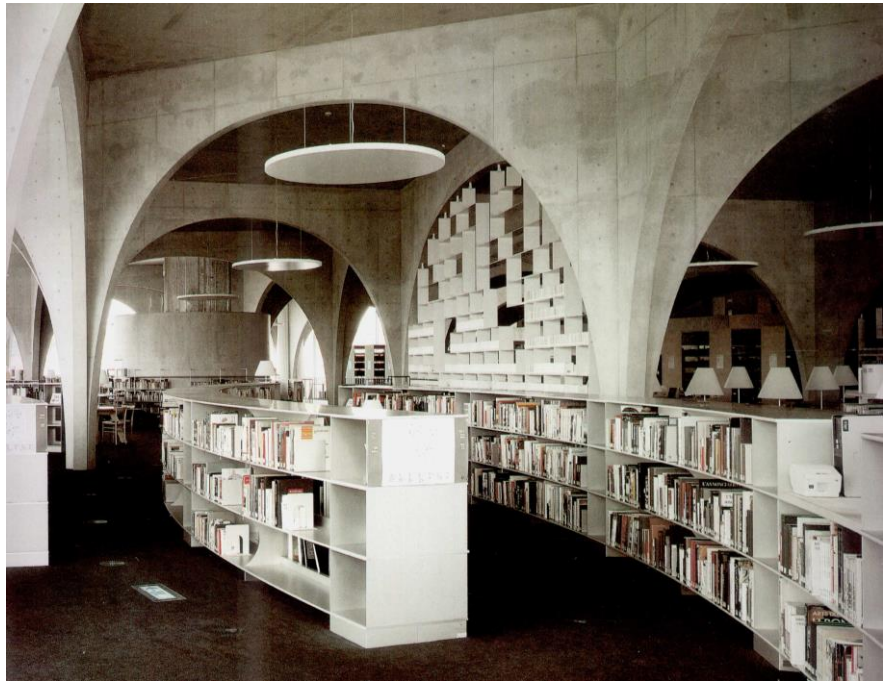
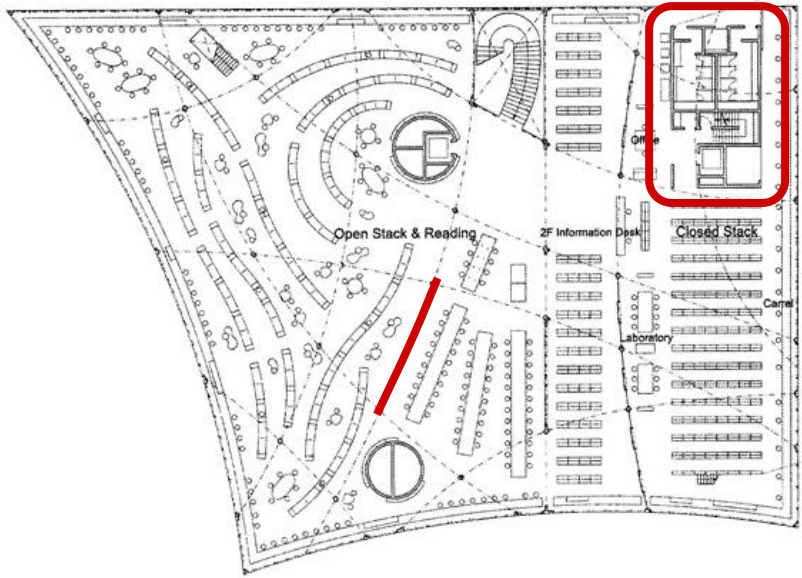
信息设计楼
Information Design
Department Building

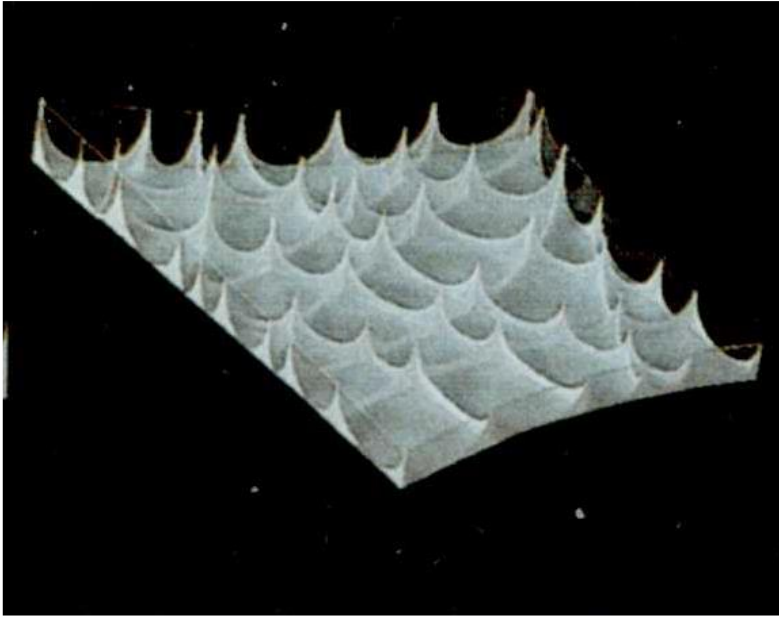


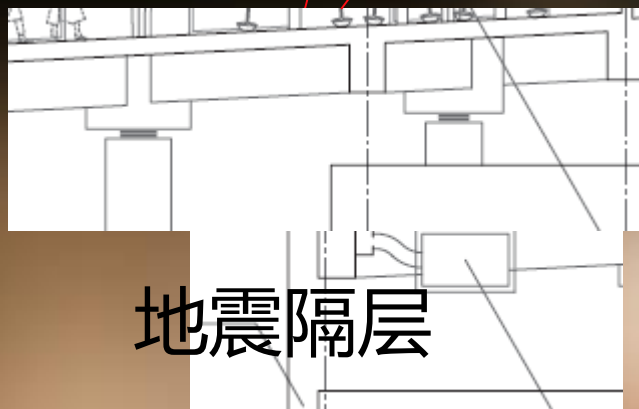
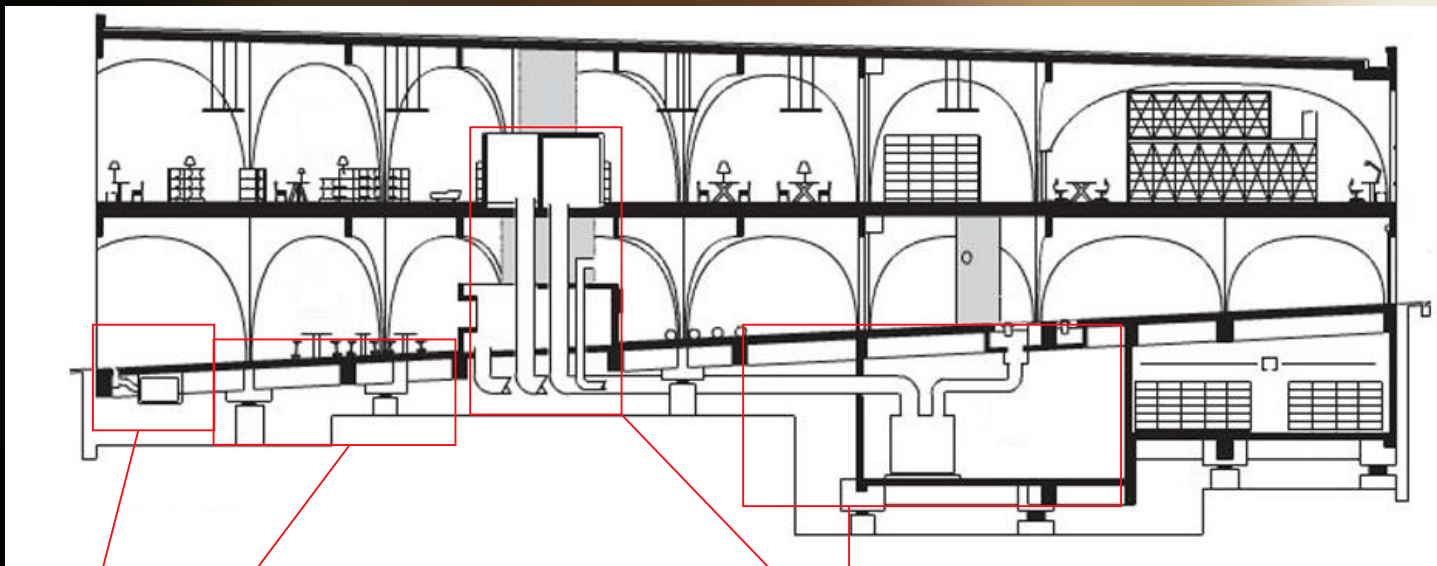
东立面 \ East elevation



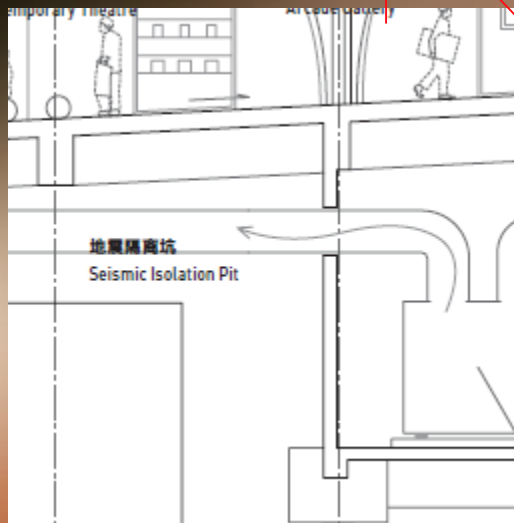




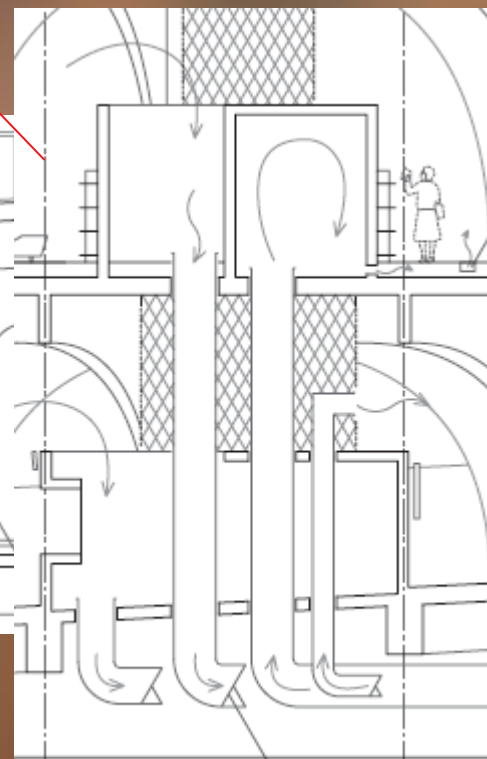




地震隔层

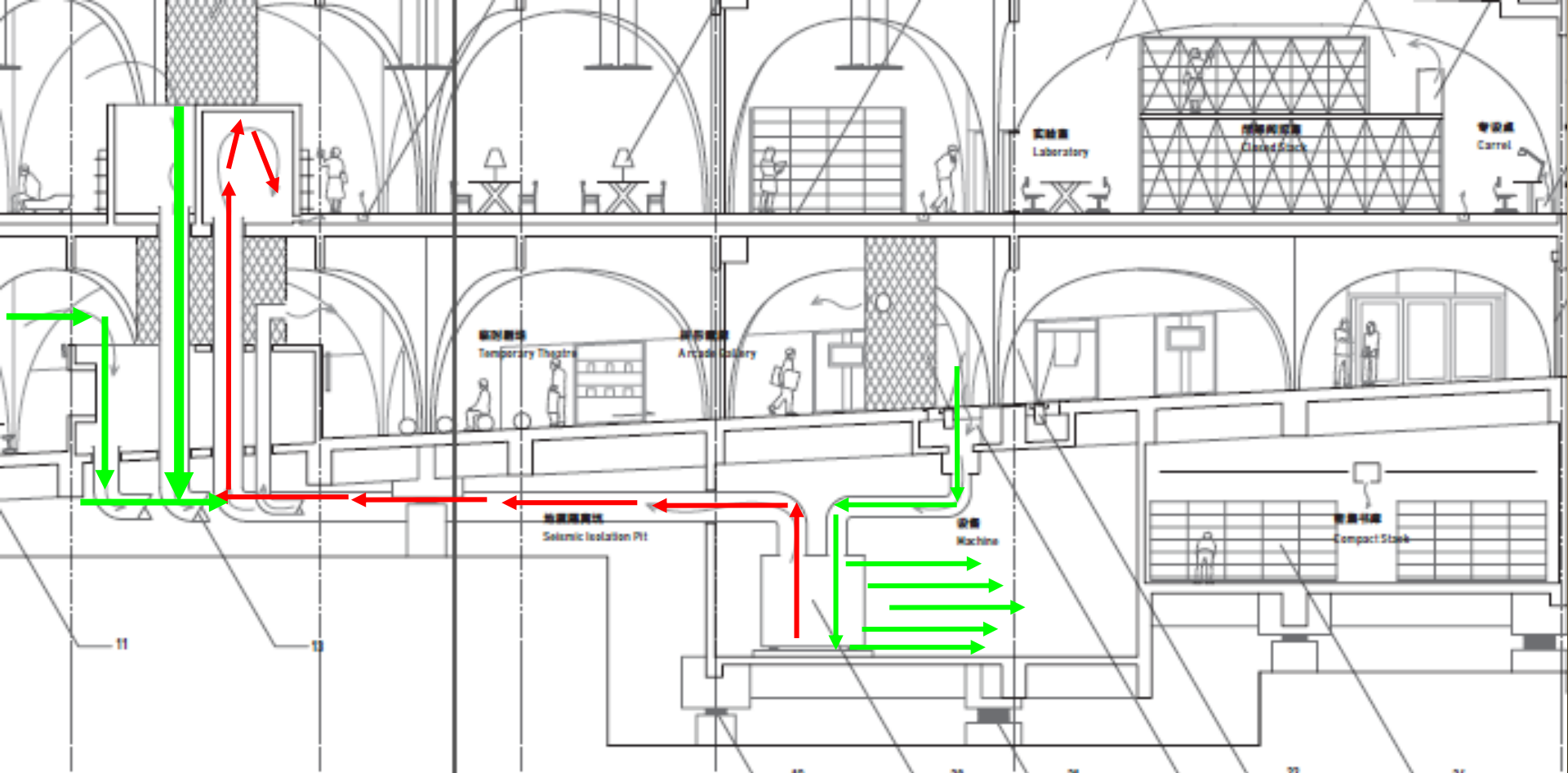


地震隔离坑
Seismic Isolation Pit



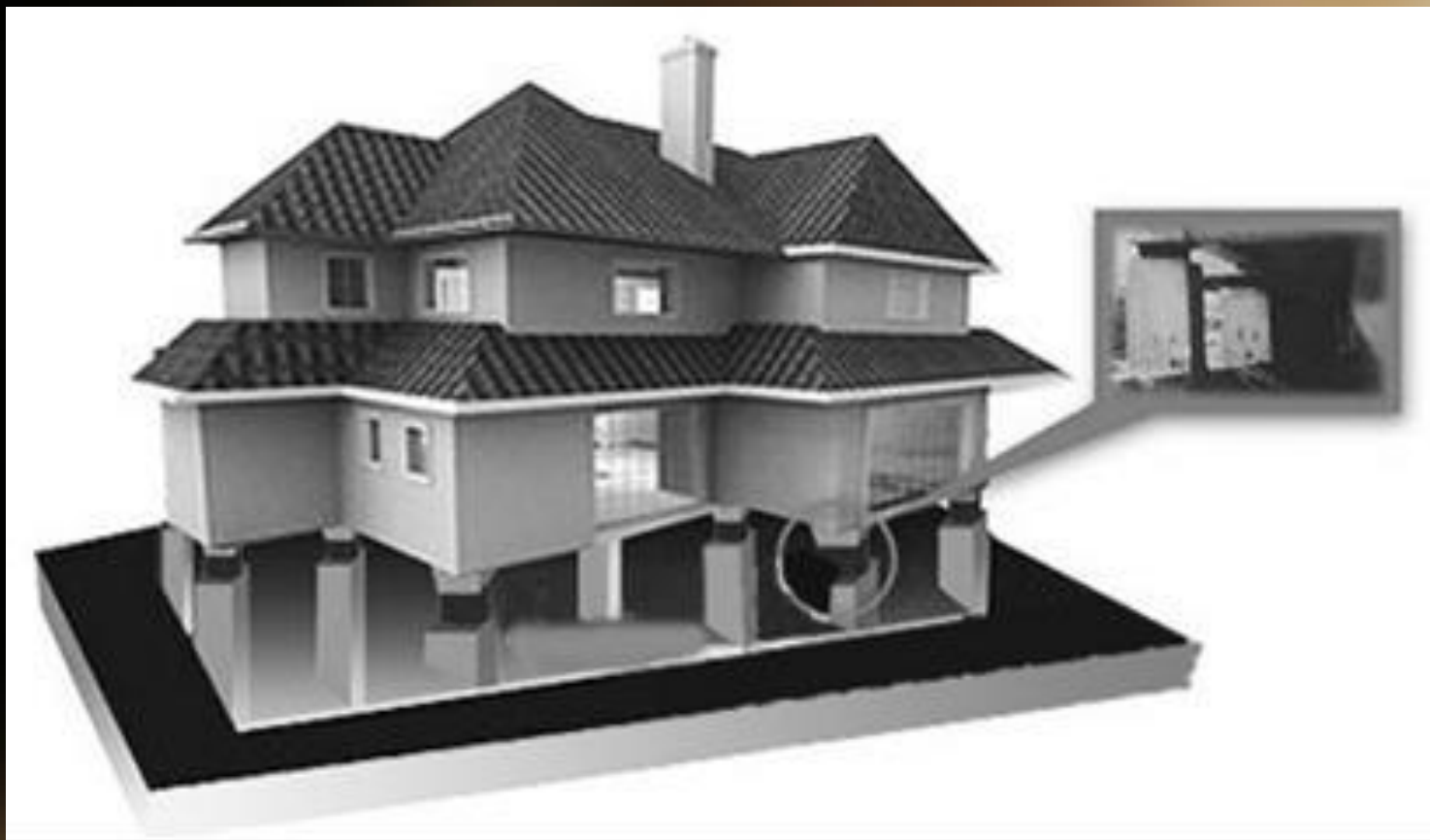
空气调节

通风道



为地下房间通风换气，使得书籍以及机器不被阴湿气体腐蚀

隔层防震



日本在构筑高层建筑物的基础中普遍采用“地基地震隔绝”技术，在建筑物底部安装橡胶弹性垫或摩擦滑动承重座等抗震缓冲装置。

THANK YOU

Q&A

