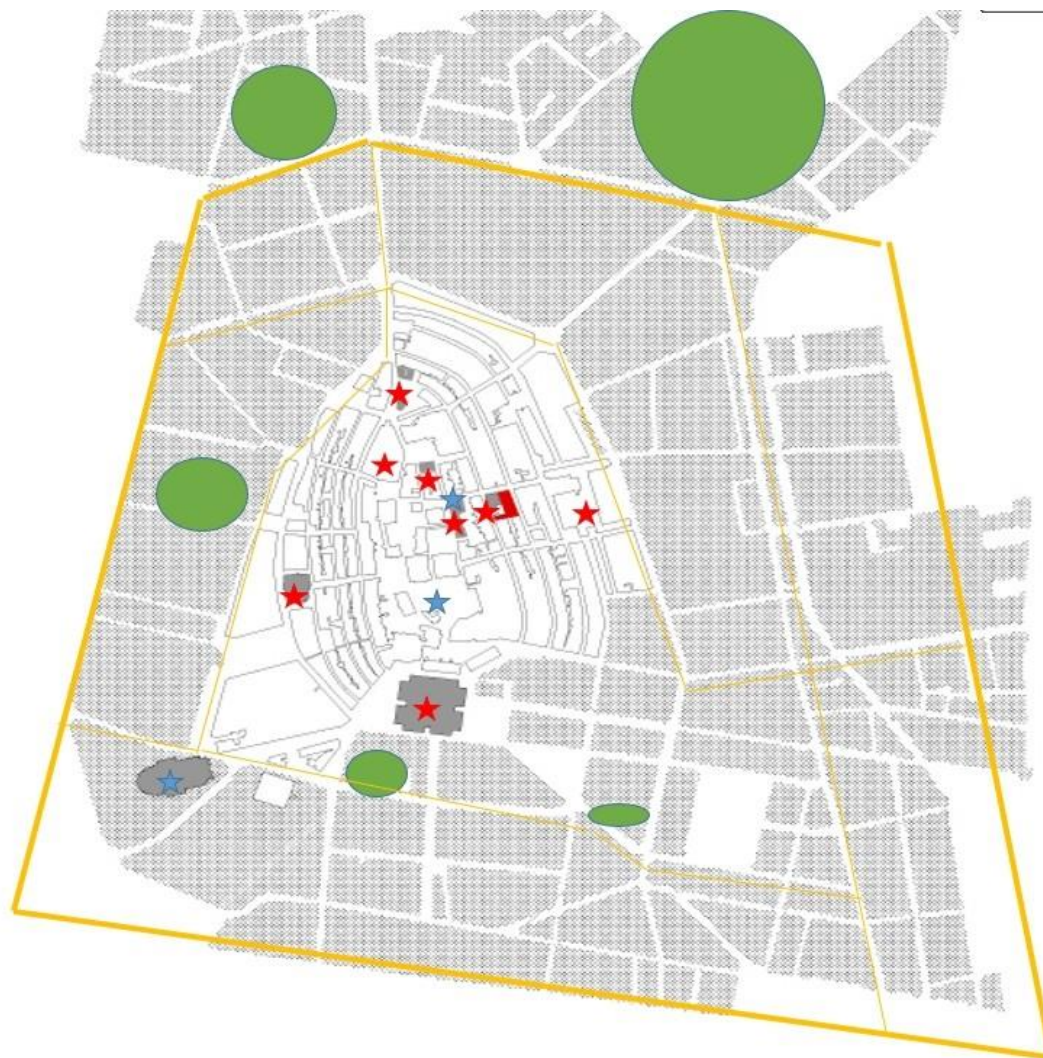


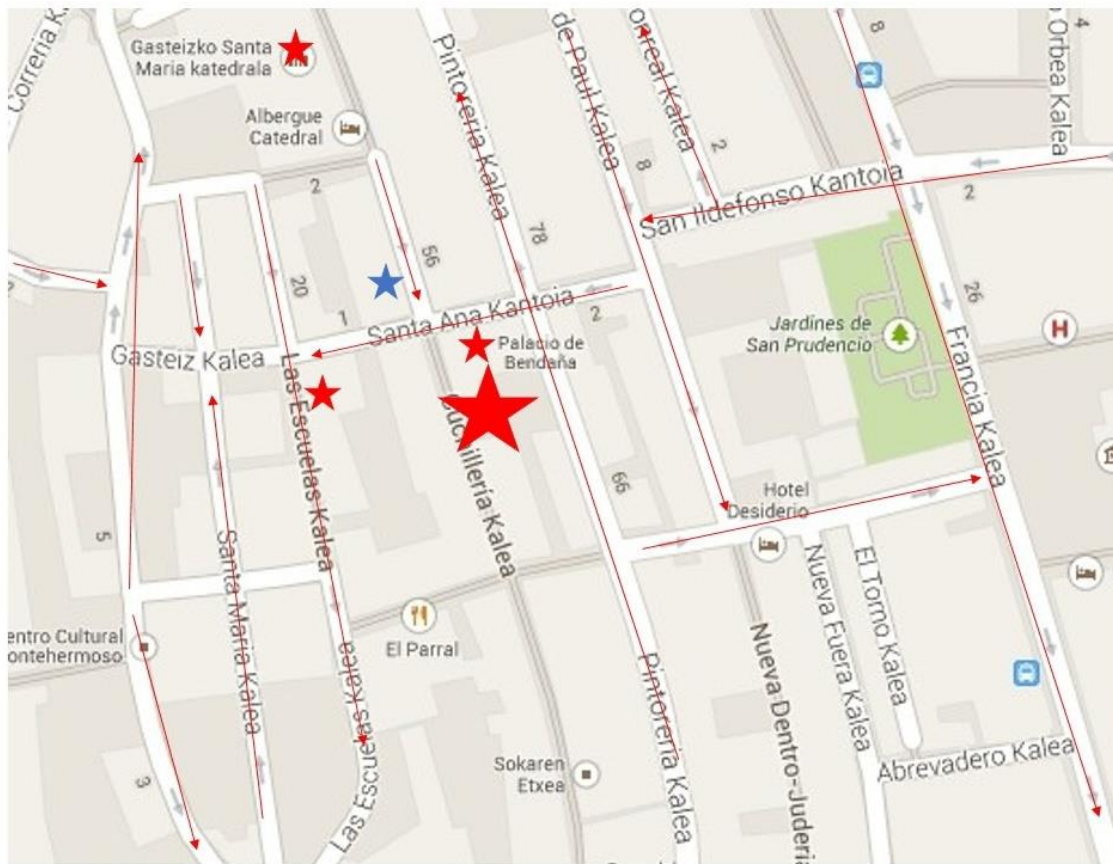
案例分析

维多利亚考古博物馆

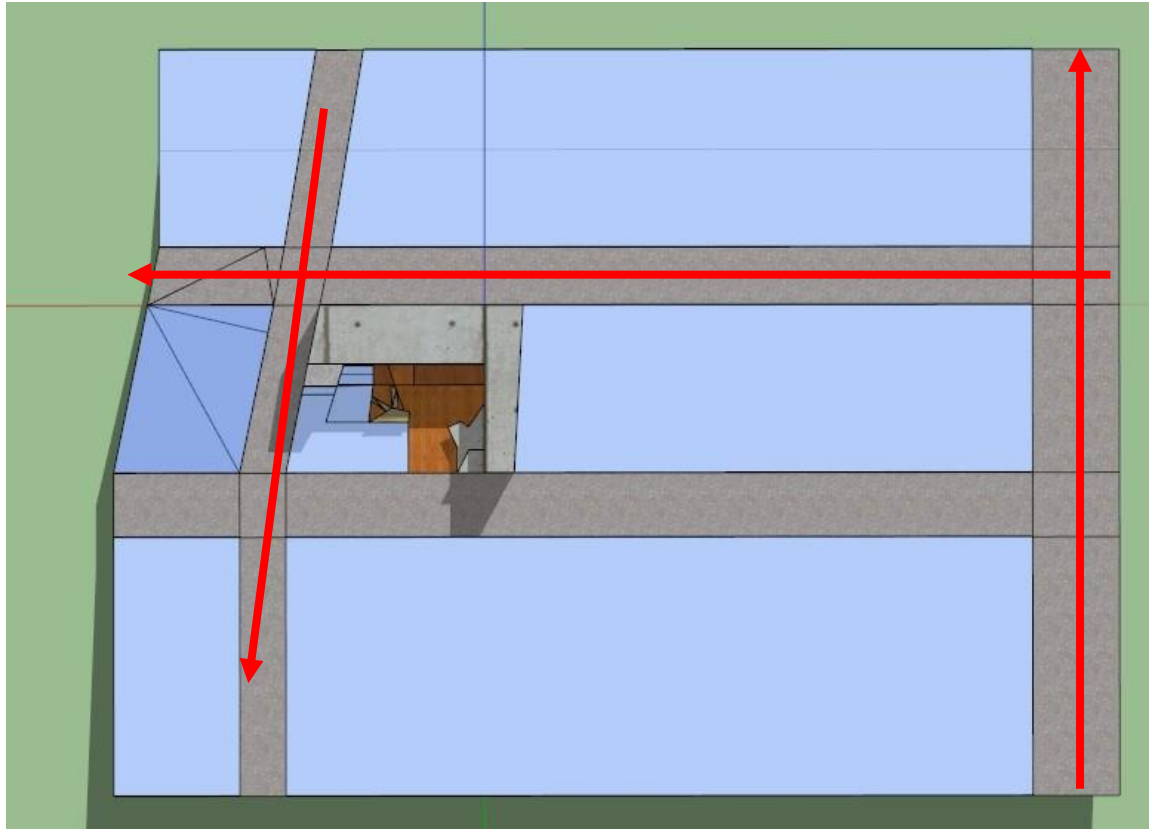
区位关系



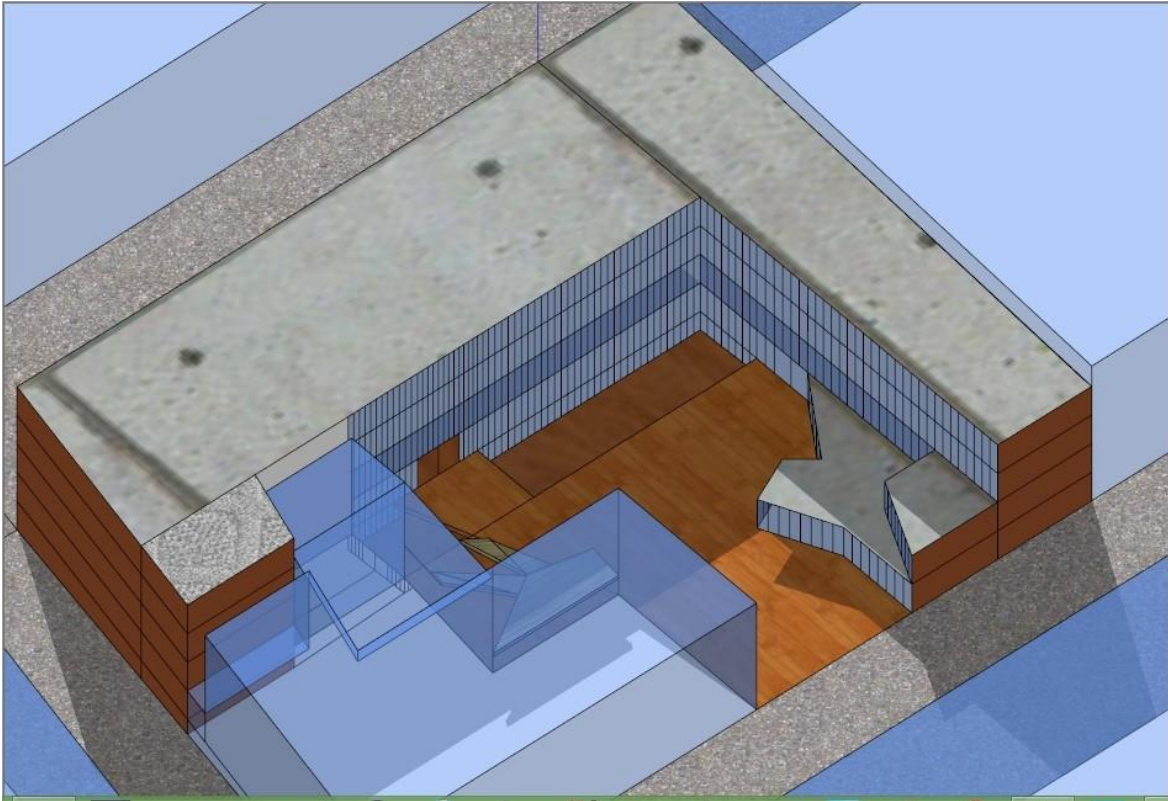
周边街区



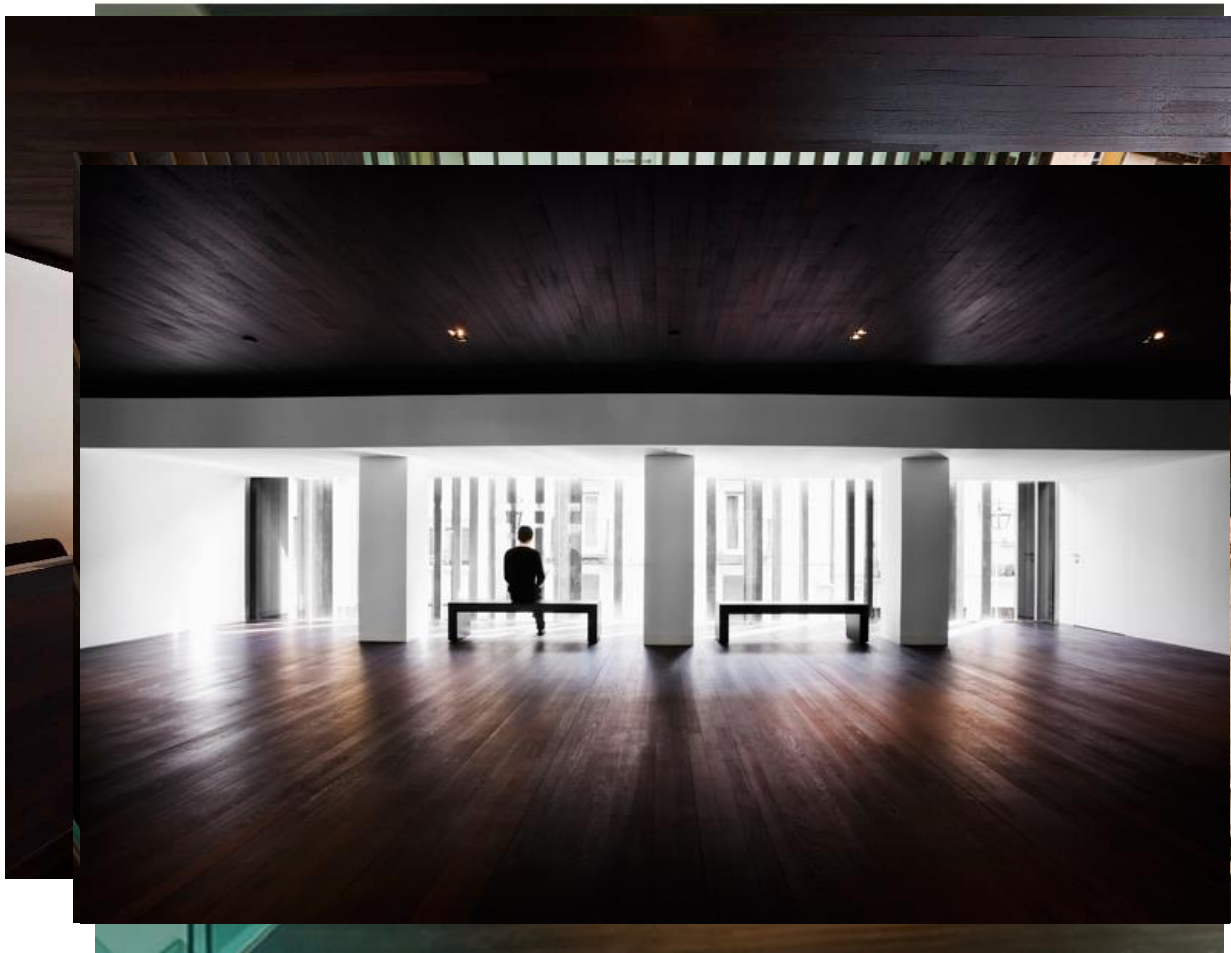
周边街区



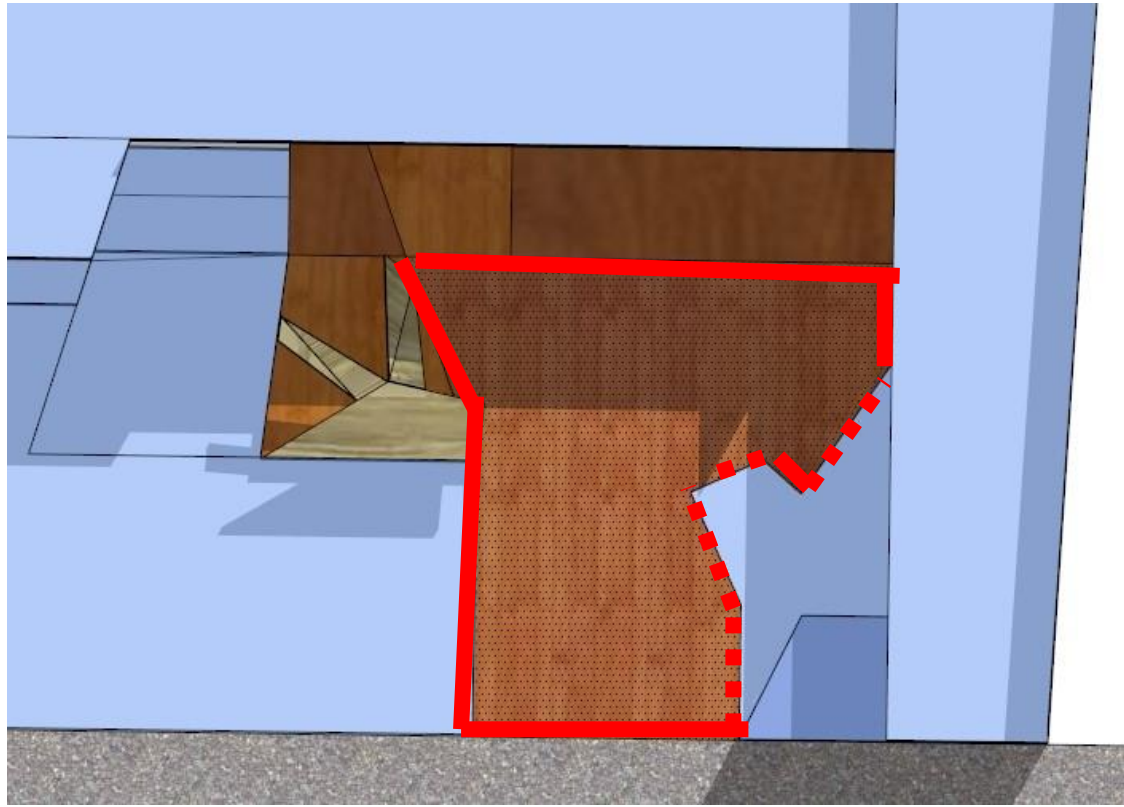
建筑模型



空间分布



场地分析



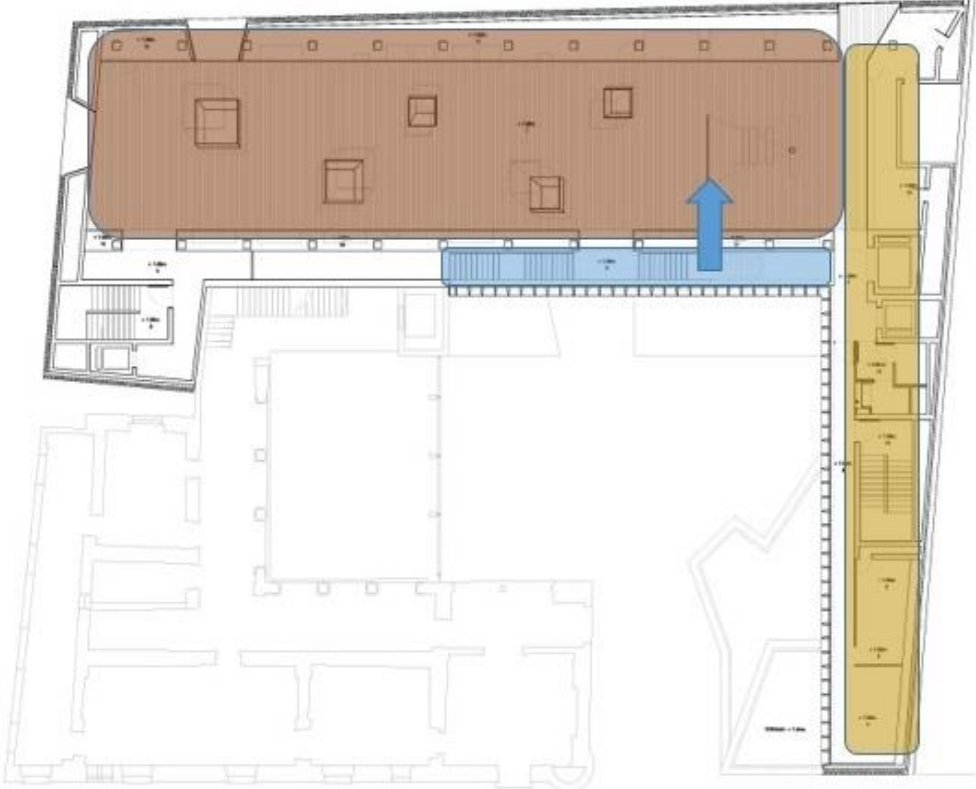
场地分析



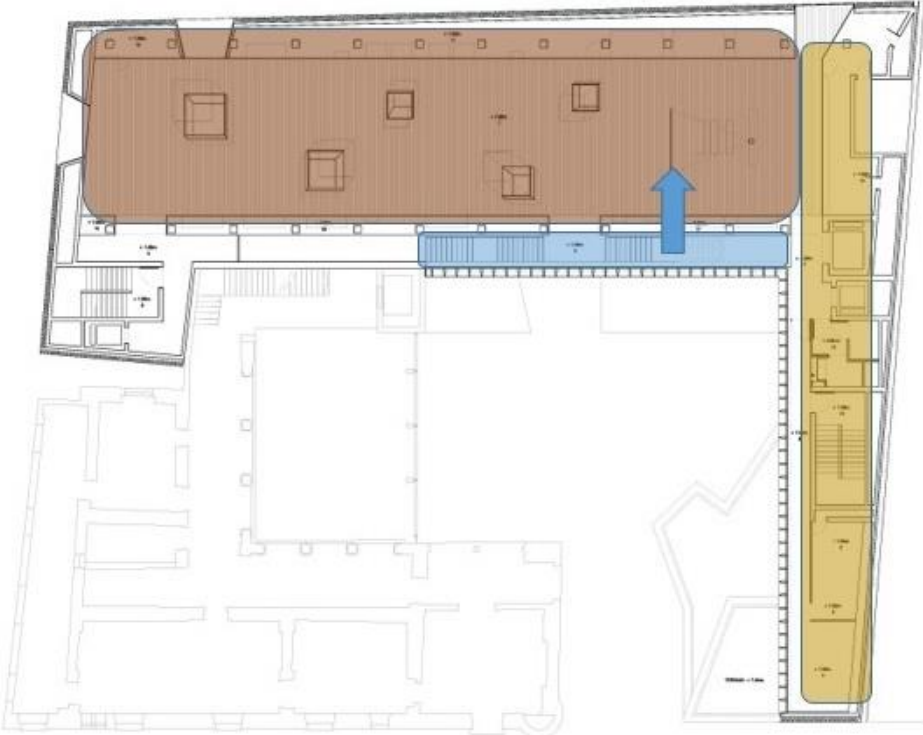
空间分布



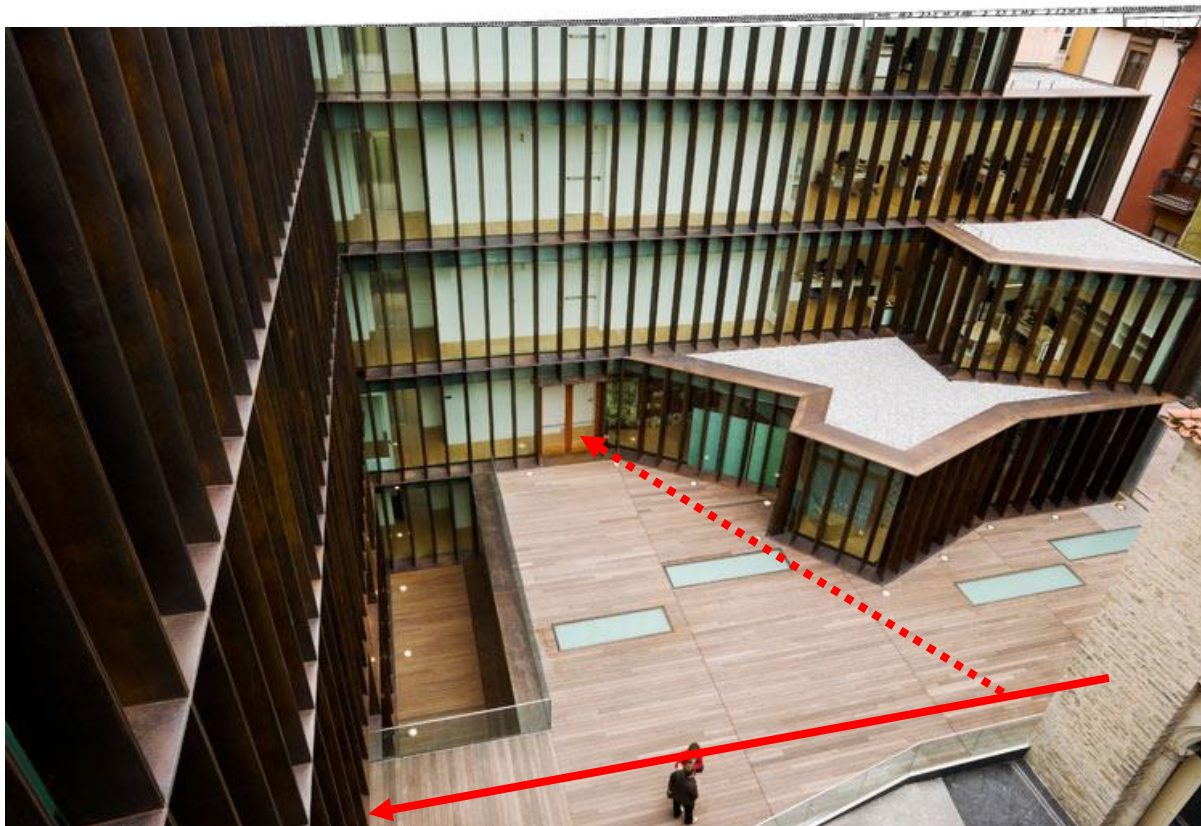
空间分布



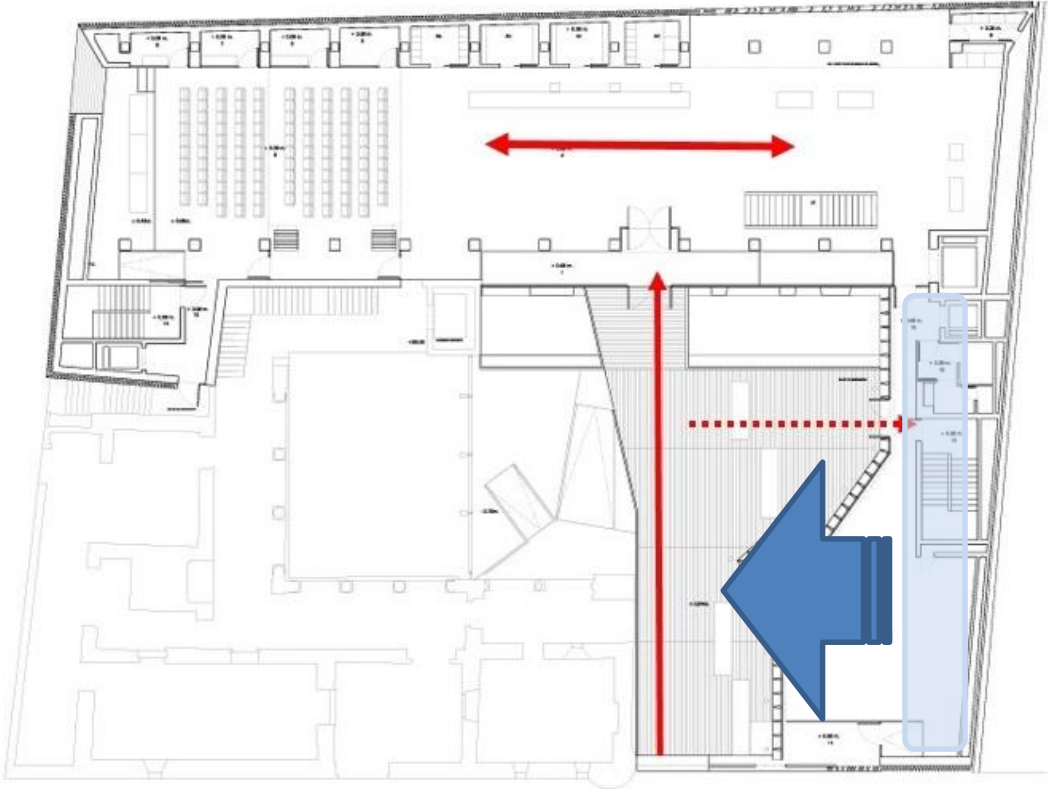
空间分布



流线分析



流线分析



空间格局



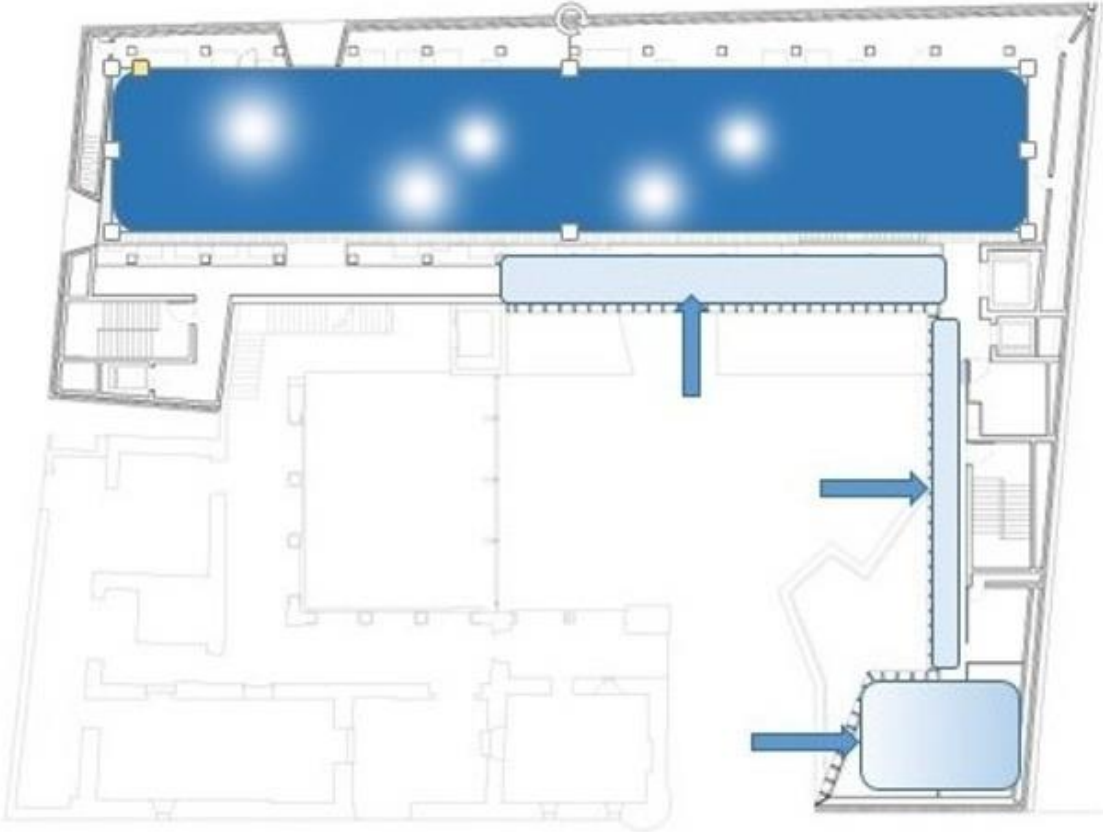
0 1 5 10 m
PLANTA PRIMERA, COTA +3.00

A small architectural drawing showing a cross-section of a staircase or a similar vertical structure, positioned above a scale bar. The scale bar is marked with 0, 1, 5, and 10 meters.

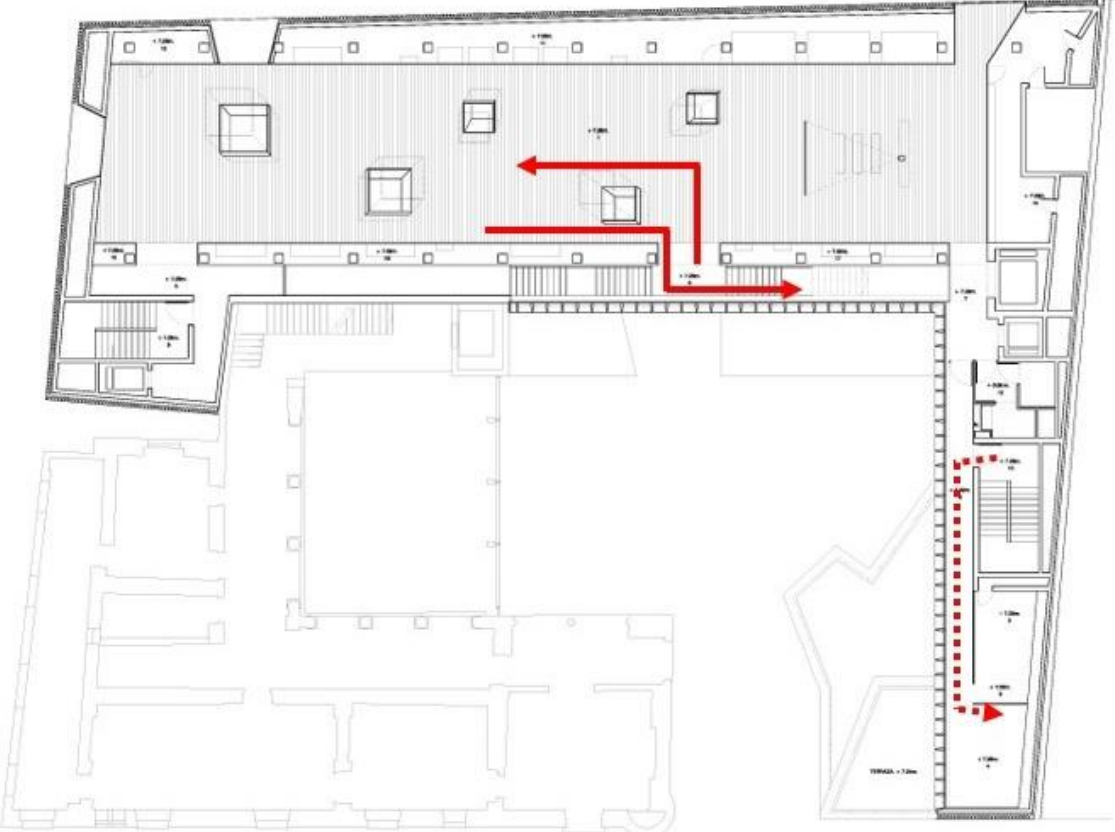
流线分析



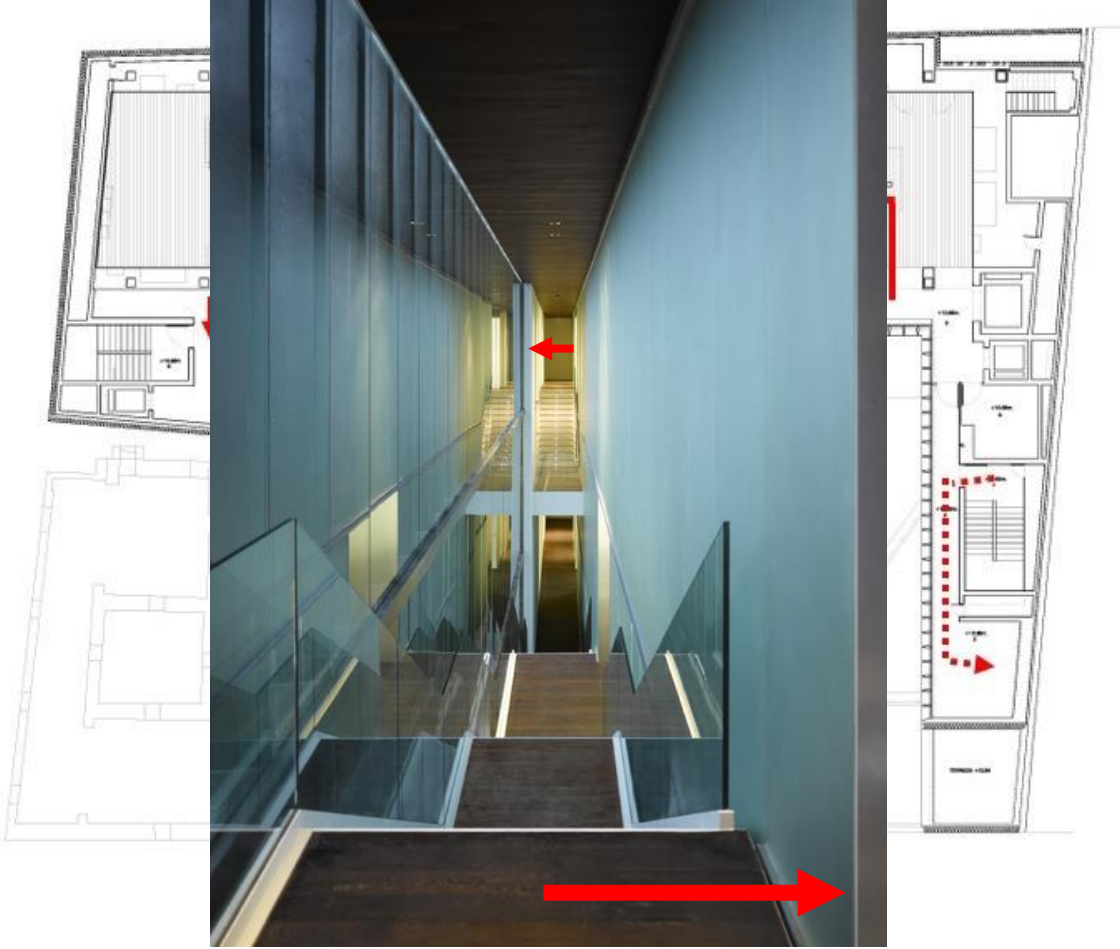
光影效果



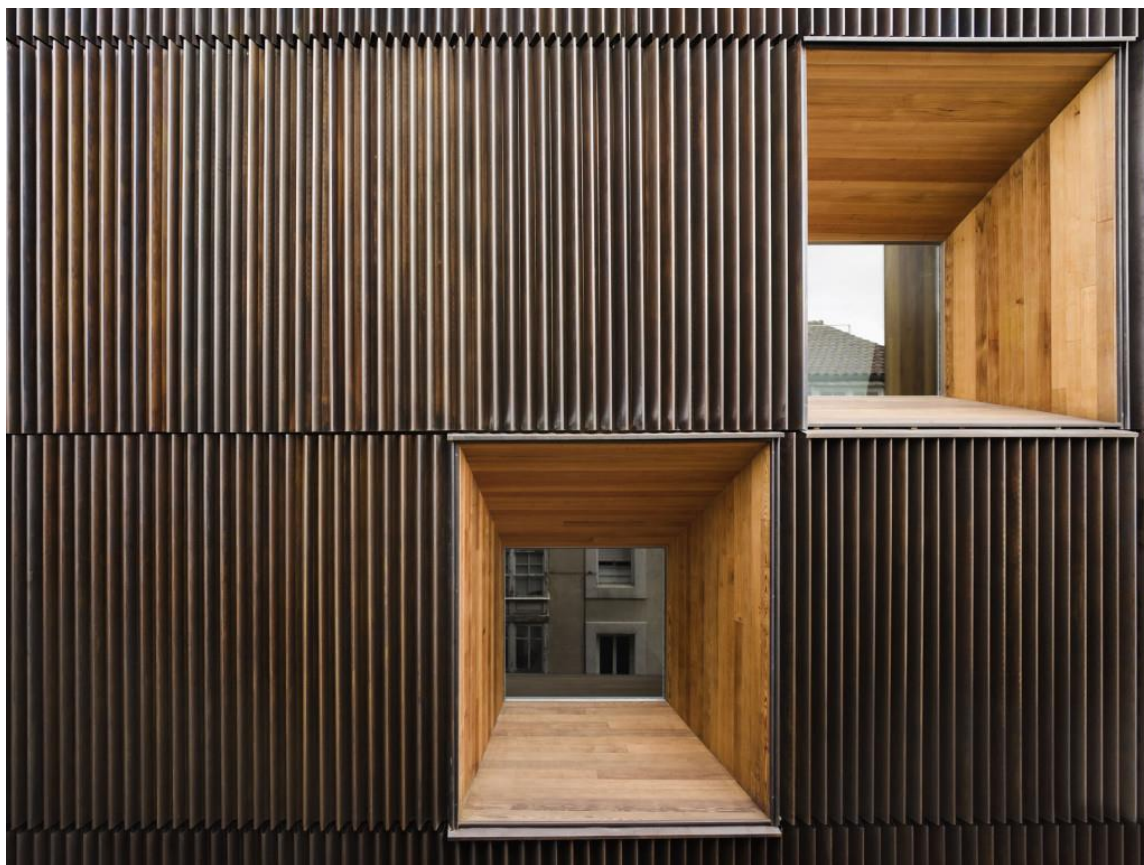
流线分析



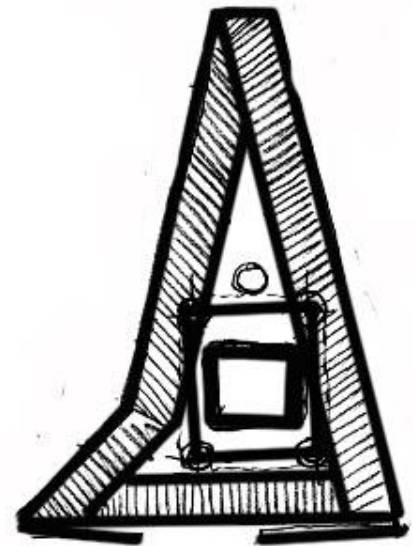
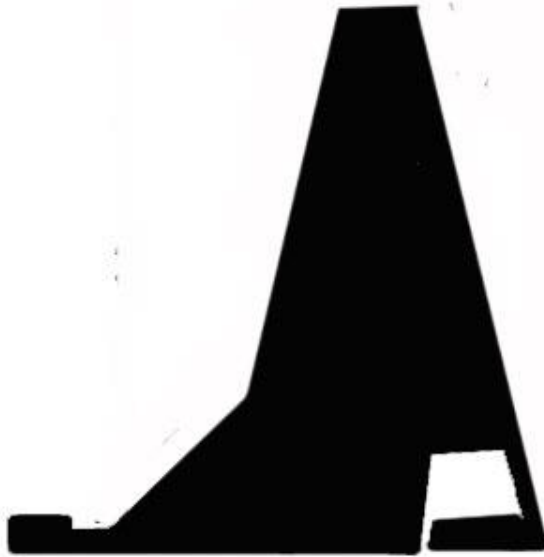
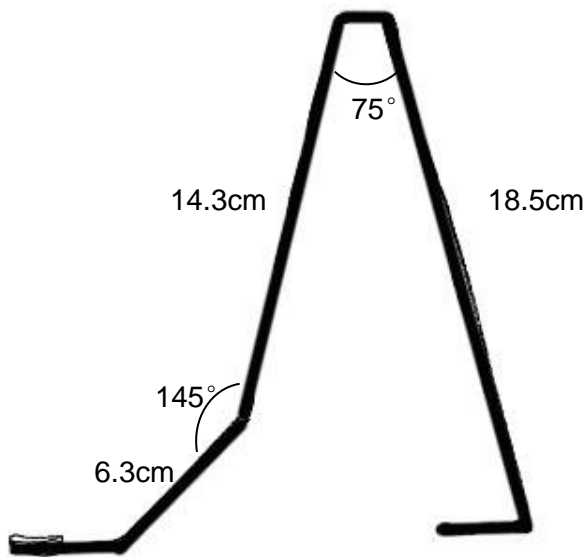
流线分析



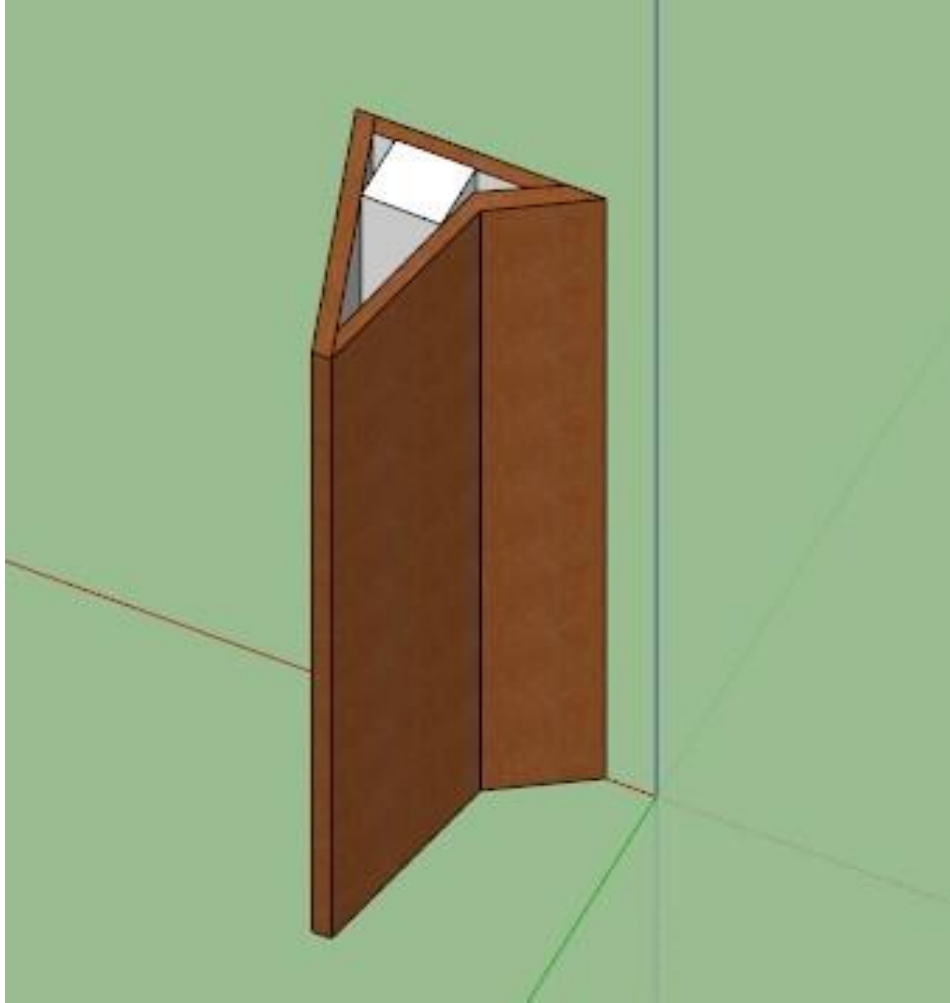
材质分析



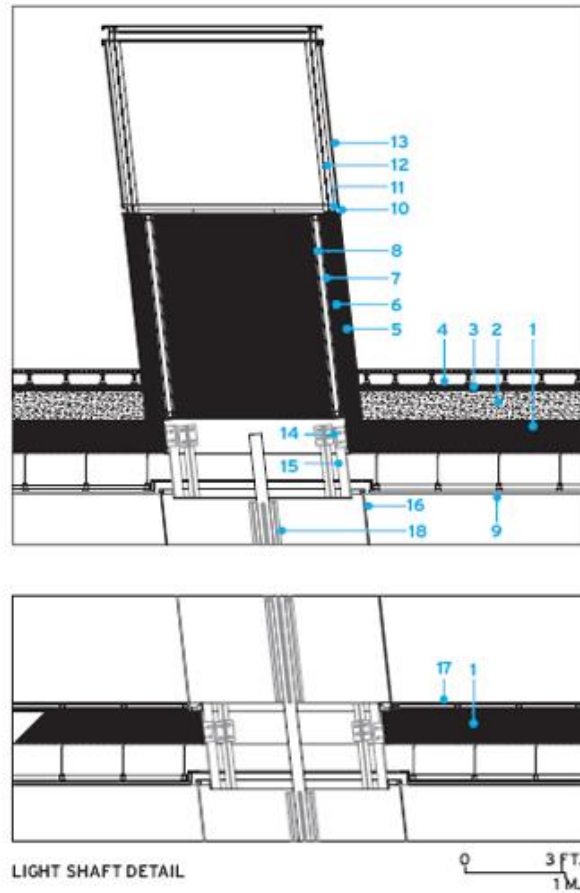
材质分析



材质分析



材质分析

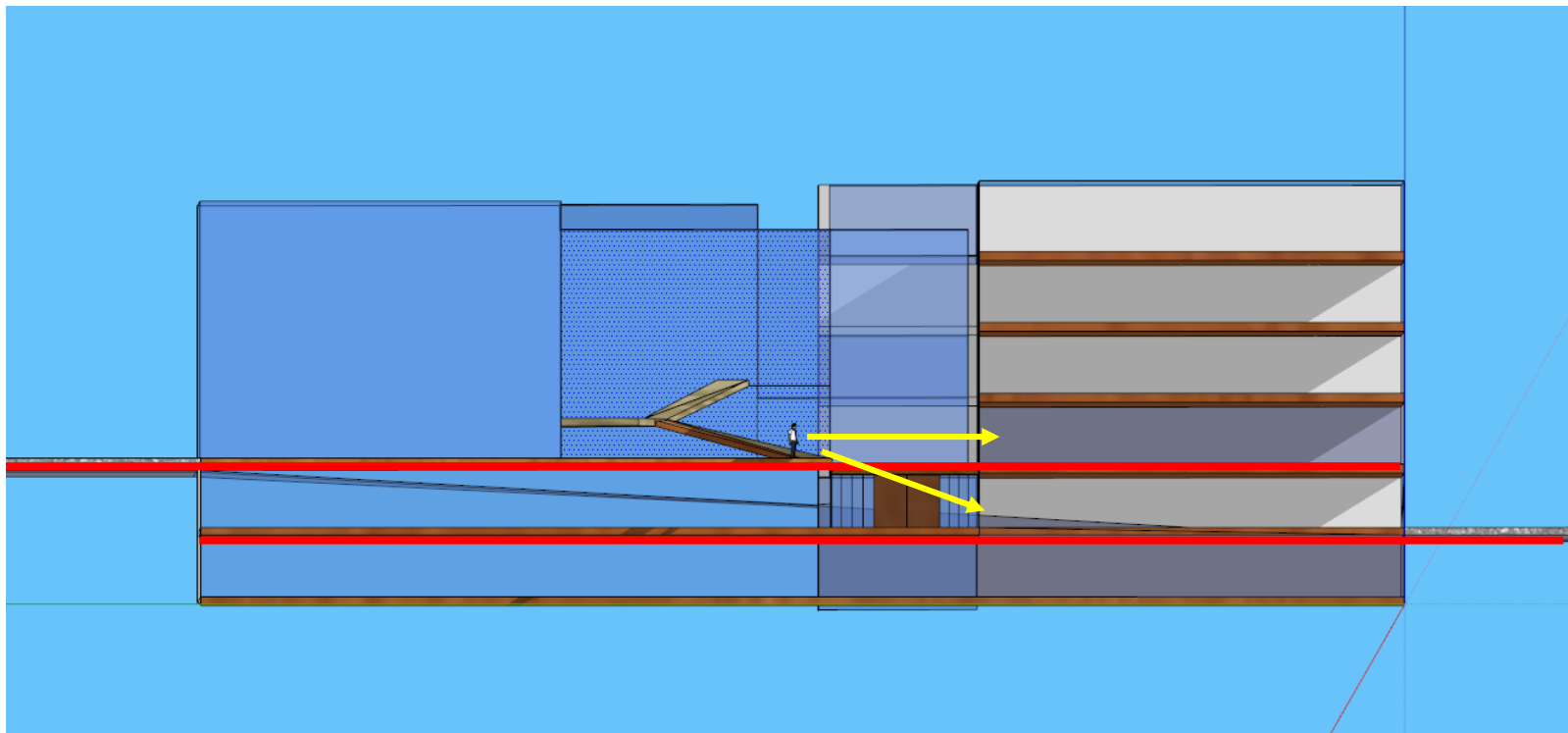


- 1 REINFORCED CONCRETE SLAB
- 2 LIGHTWEIGHT CONCRETE ROOF SLOPE
- 3 EPDM MEMBRANE
- 4 INSULATION
- 5 CONCRETE WALL
- 6 THERMAL INSULATION
- 7 STEEL STUD
- 8 GYPSUM BOARD
- 9 WENGE WOOD SUSPENDED CEILING
- 10 STAINLESS STEEL GUTTER
- 11 STEEL PROFILE FOR GLASS
- 12 HEB 100 PROFILE
- 13 THERMAL SAFETY GLAZING
- 14 ANGLE STEEL PLATES
- 15 T PROFILE SKYLIGHT STRUCTURE
- 16 LAMINATED GLASS
- 17 WENGE WOOD FLOOR PLANK
- 18 LINEAR LIGHTING

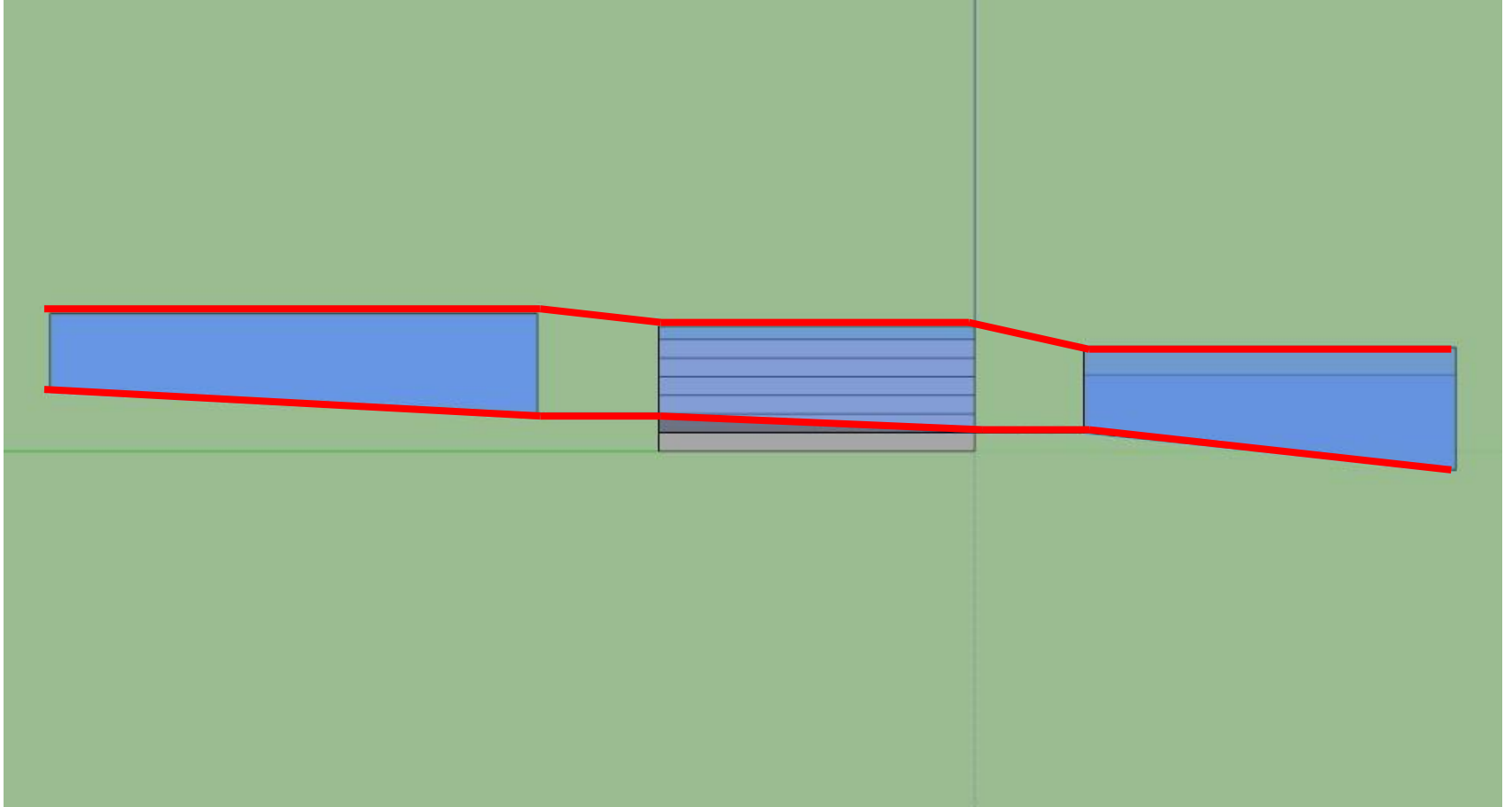
场地分析



场地分析



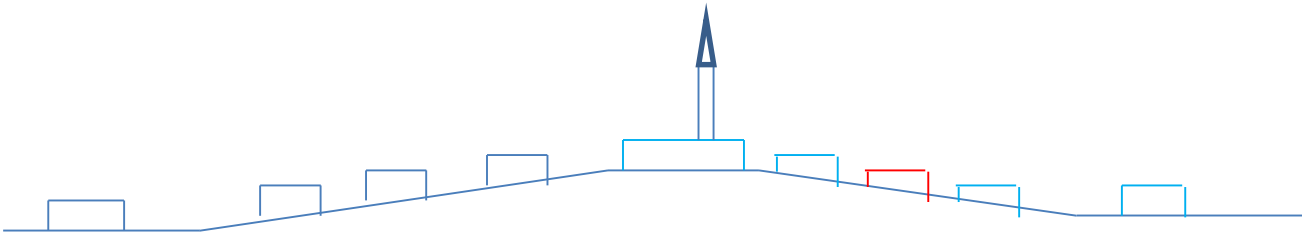
场地分析



场地分析



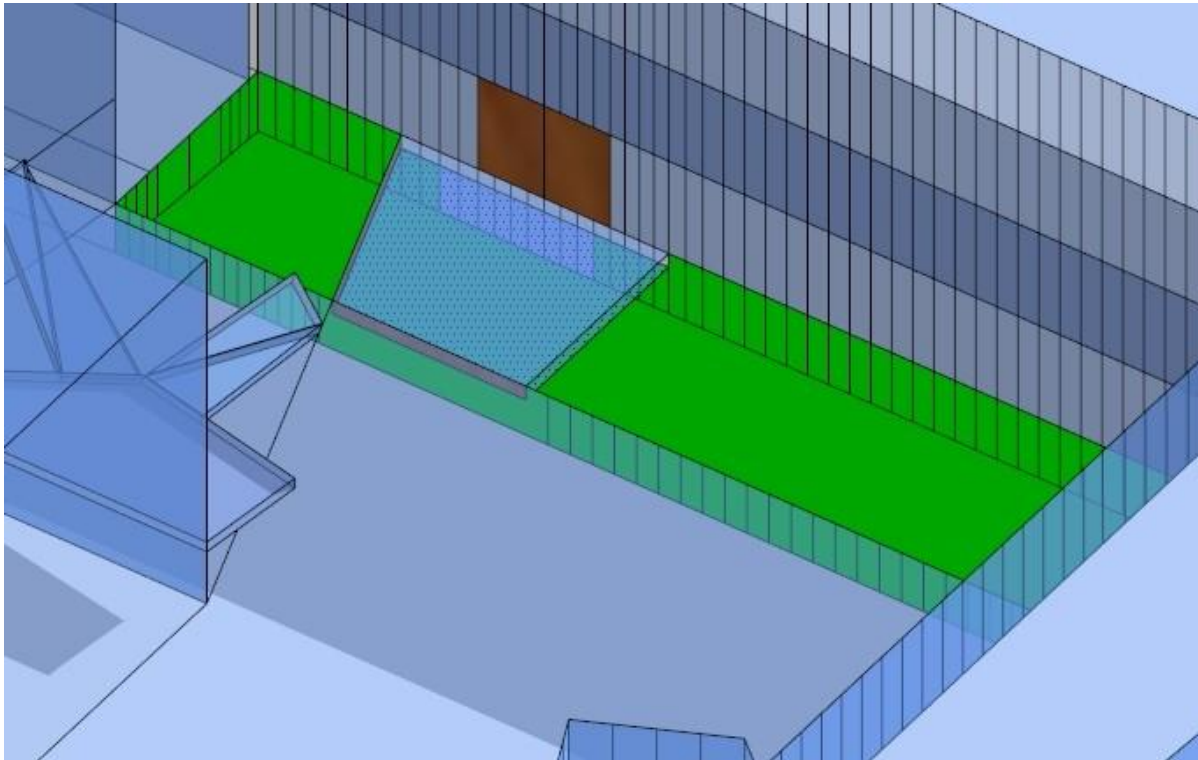
场地分析



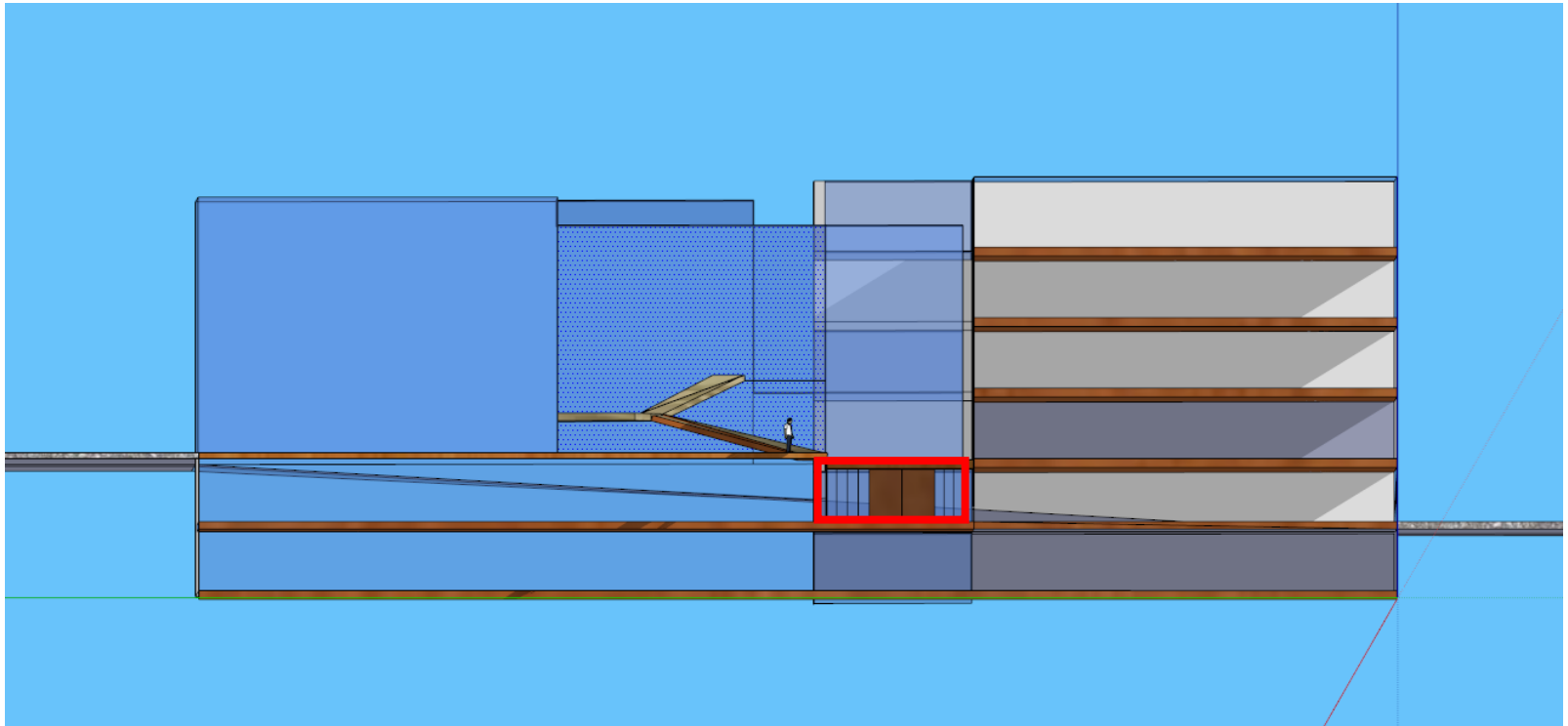
场地分析



场地分析



场地分析

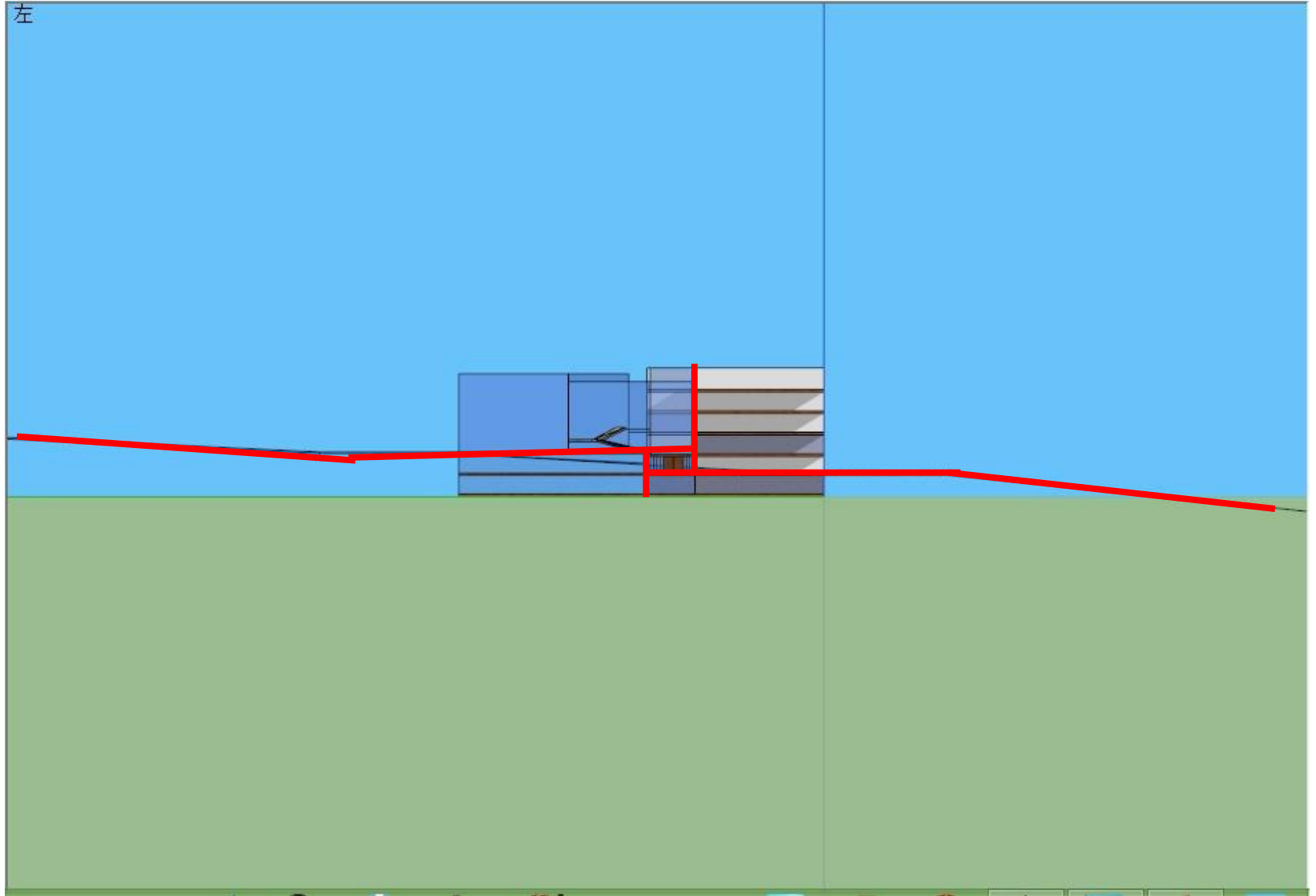


场地分析

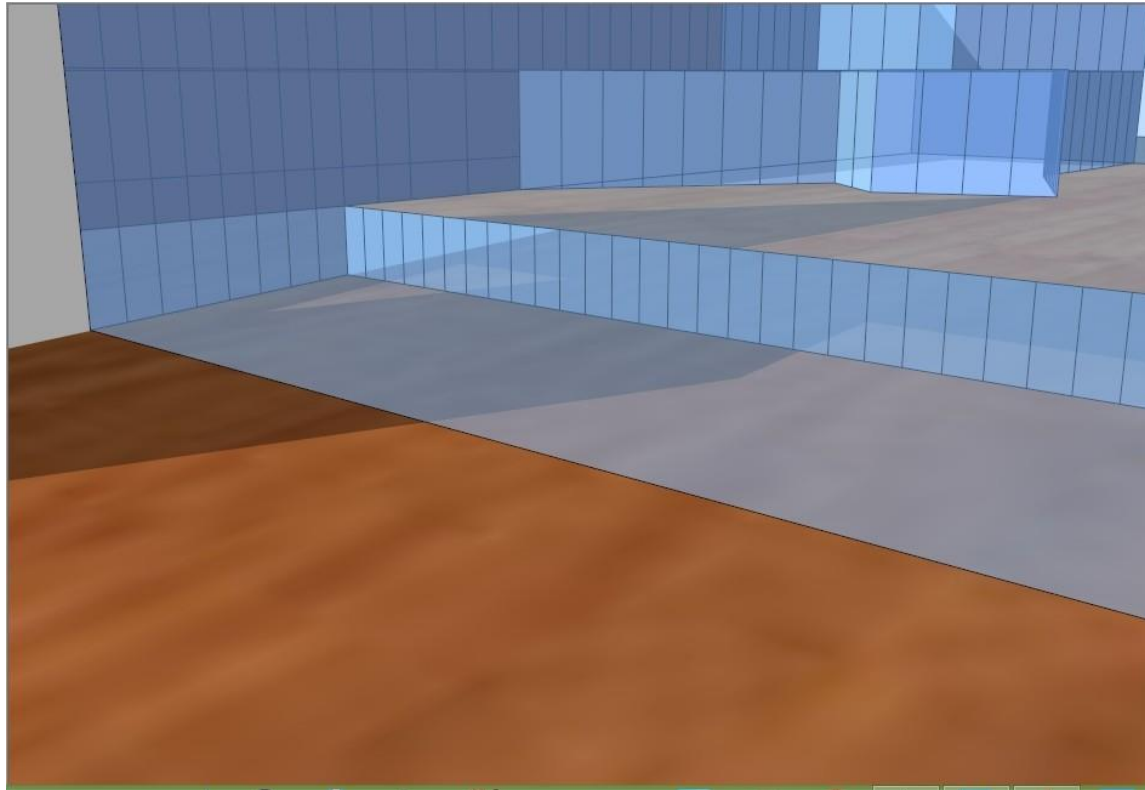


场地分析

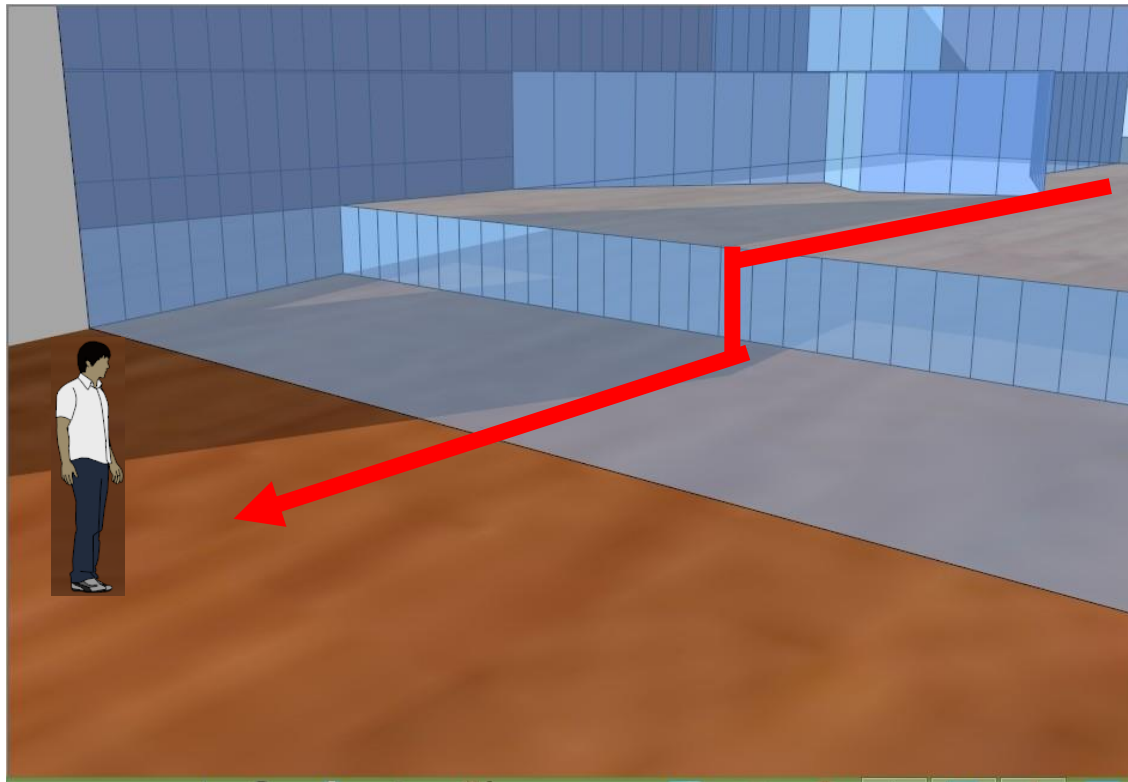
左




场地分析



场地分析





谢谢观赏

参考资料

[1] arch daily [EB/OL]. <http://www.archdaily.com/39809/archaeology-museum-victoria-francisco-mangado/>

[2] 李晓璐。博物馆[M].辽宁科学技术出版社,2011,96-97