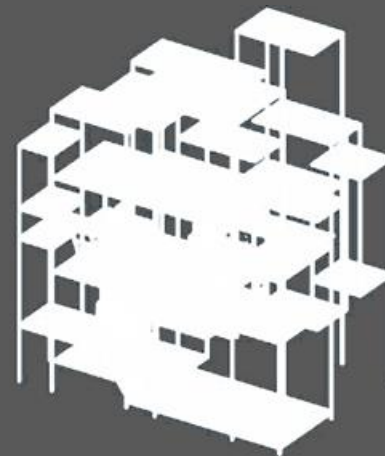


# 范例分析--House NA

周铭迪 郑思宇



# 目录

- 基地分析
- 形成过程
- 空间界定
- 视线交流
- 内部空间

# 基地分析

东京郊区——

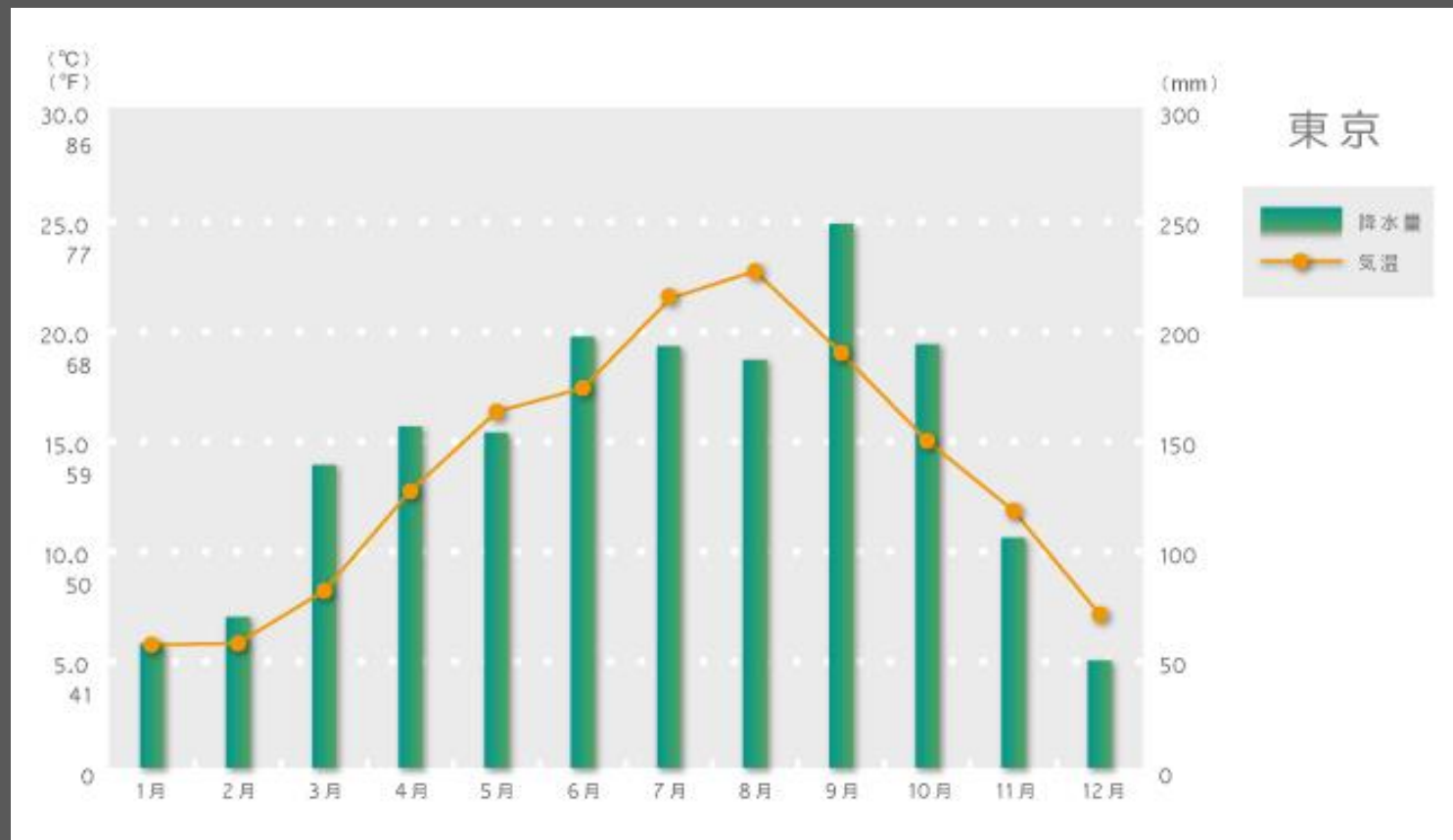
气候：温暖湿润

地质：地震多发

↓  
材料通透

↓  
框架结构

↓  
内外模糊界定



# 形成过程

建造过程：

功能分区（体块组合）



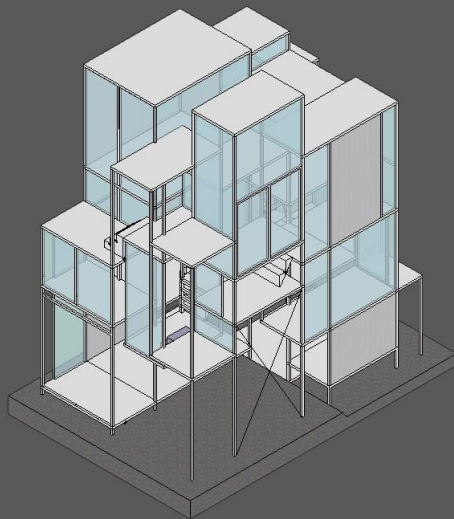
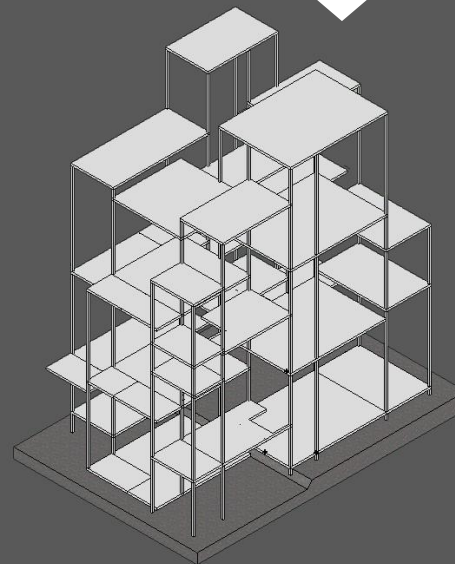
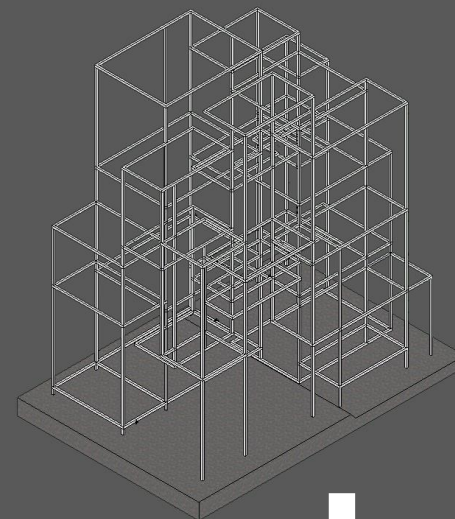
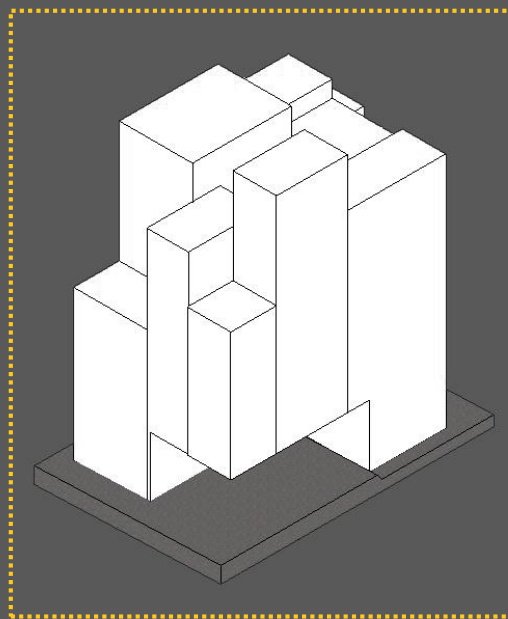
搭建框架



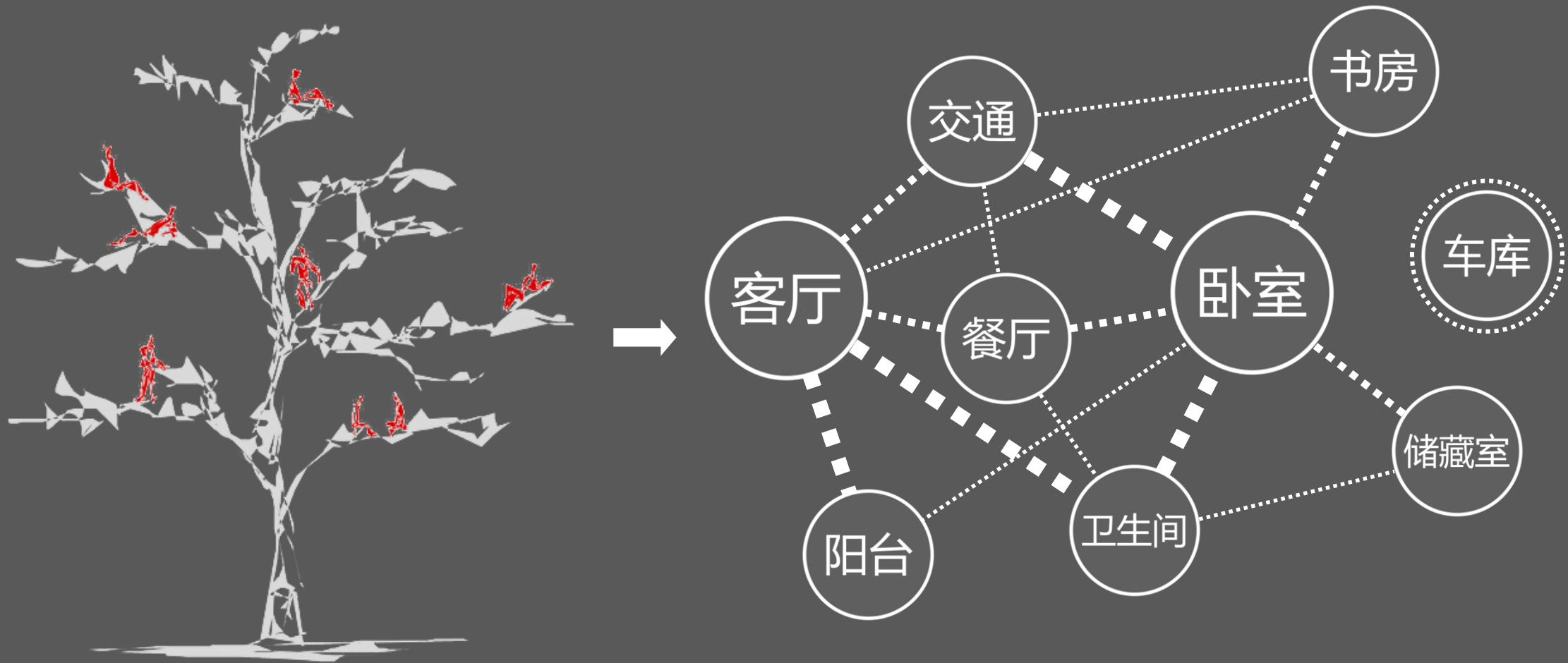
浇楼板



封面

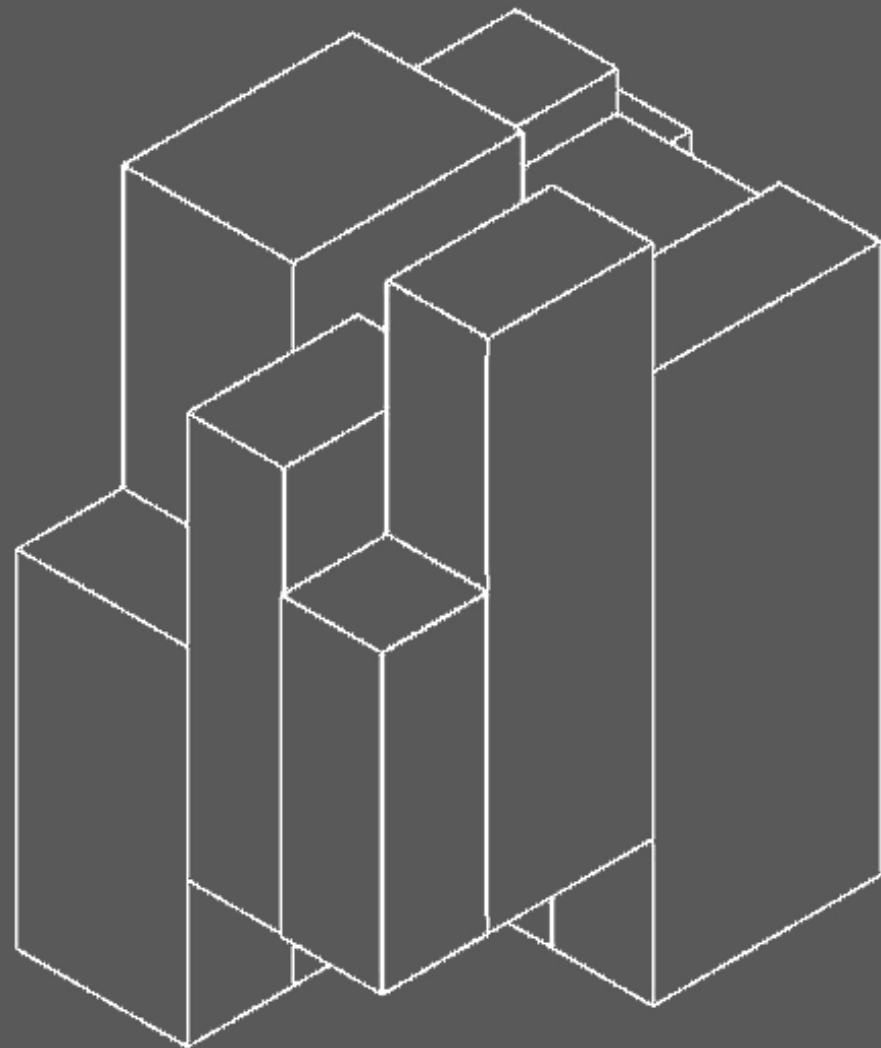
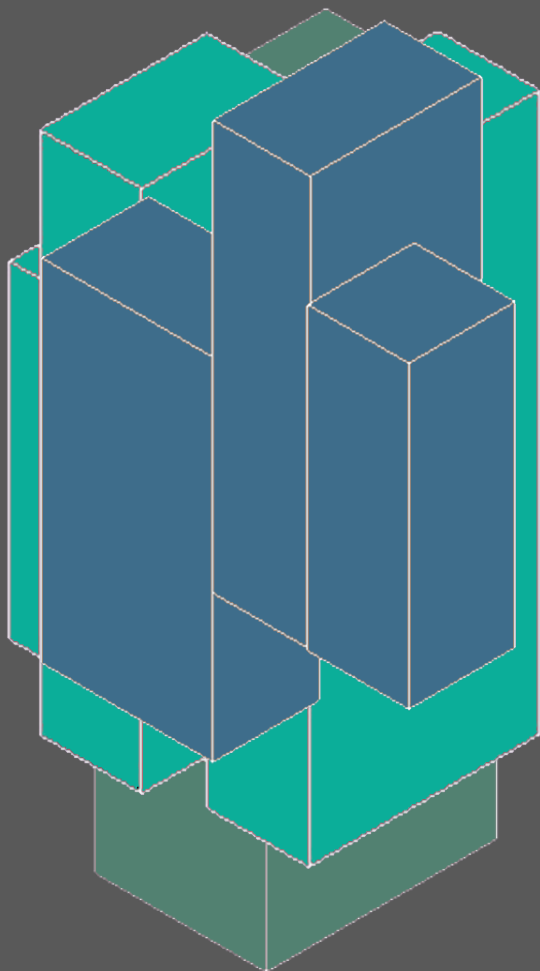


# 形成过程



# 形成过程

- 车库
- 阳台
- 辅助功能
- 客厅等公共空间
- 交通空间
- 居住空间
- 卫生间, 储藏室



# 空间界定

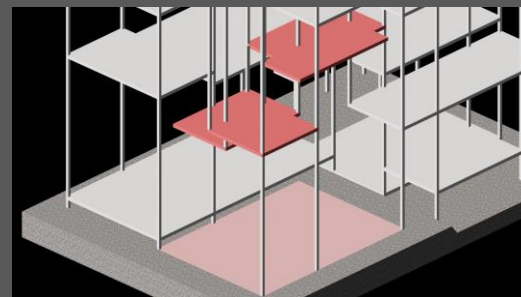
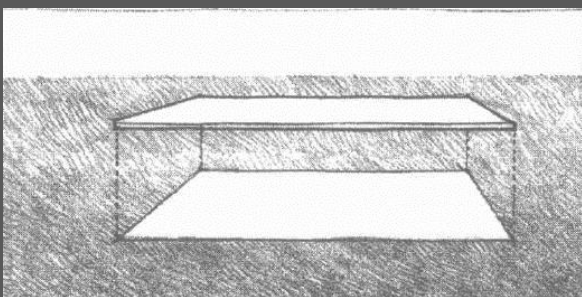
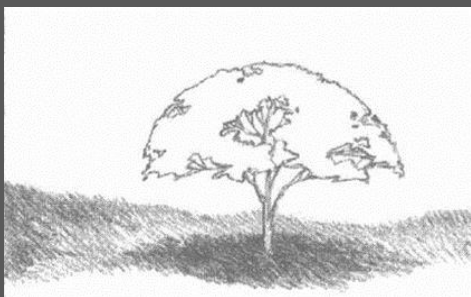
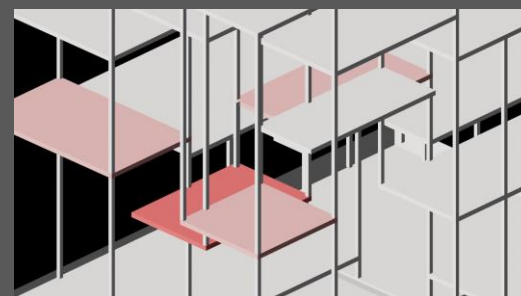
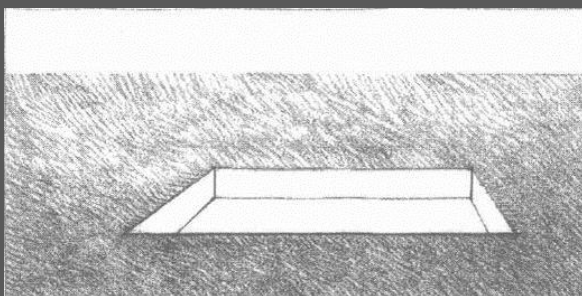
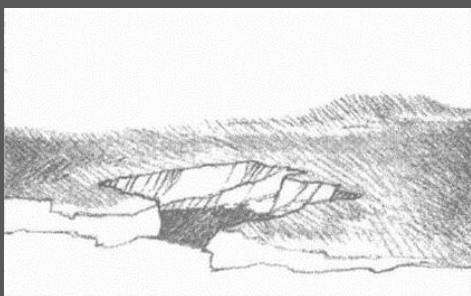
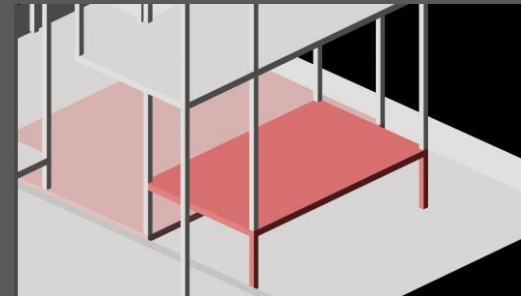
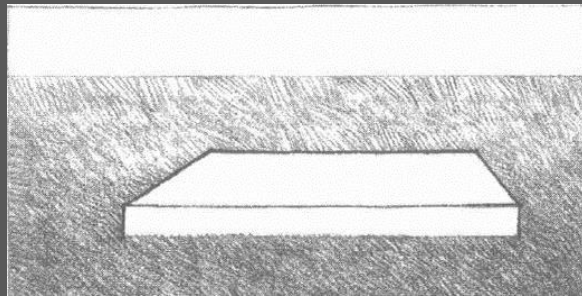
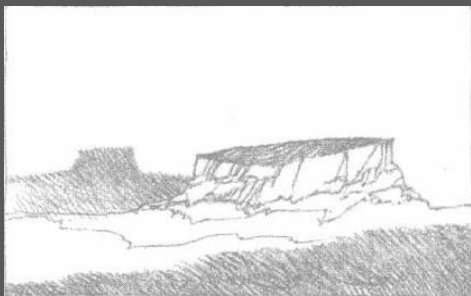
界定特点——

放弃内墙，利用高差；  
围合程度低



内部效果图

# 空间界定





# 视线交流

视线交流——

内外交流：交流频繁

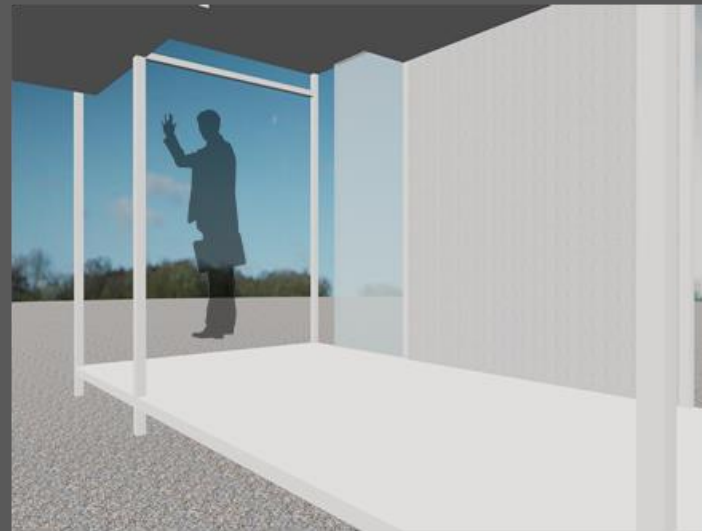
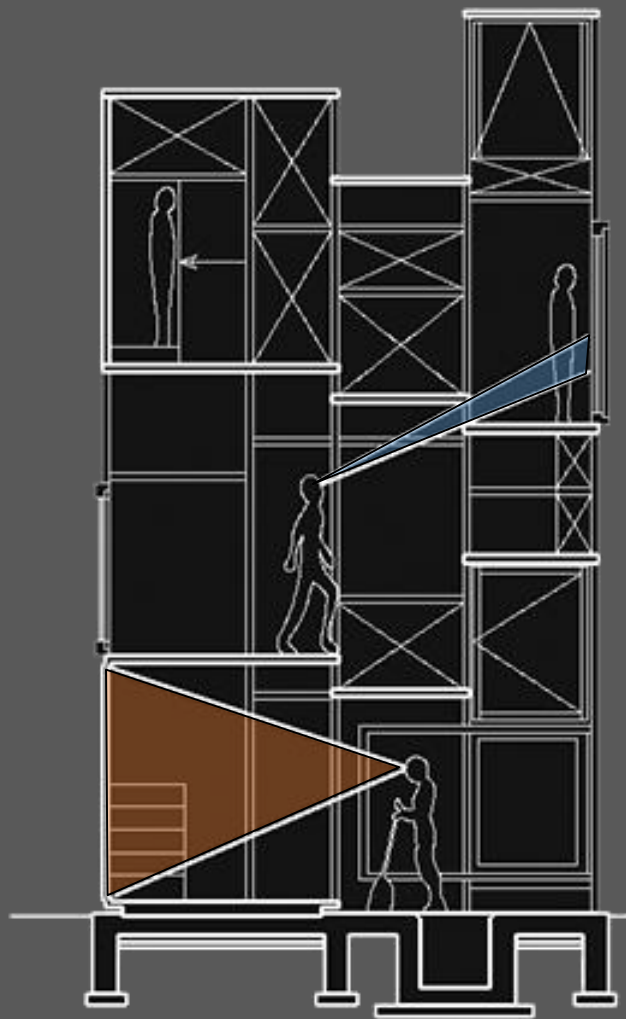
内部交流：网状视线，  
全方位体验



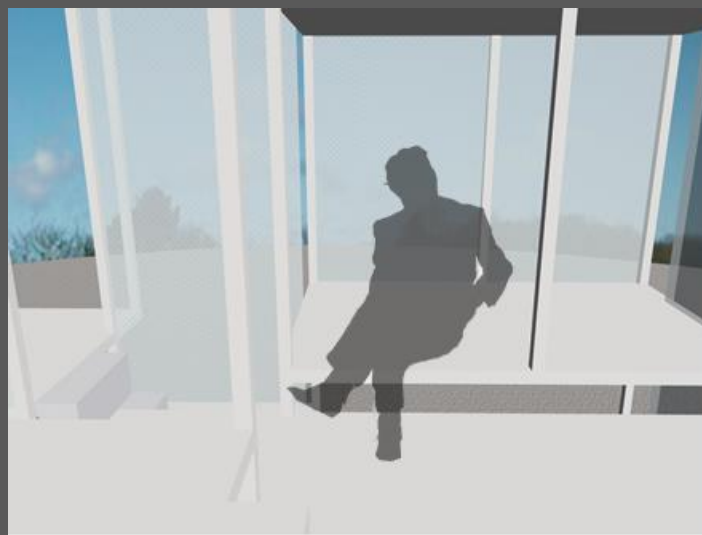
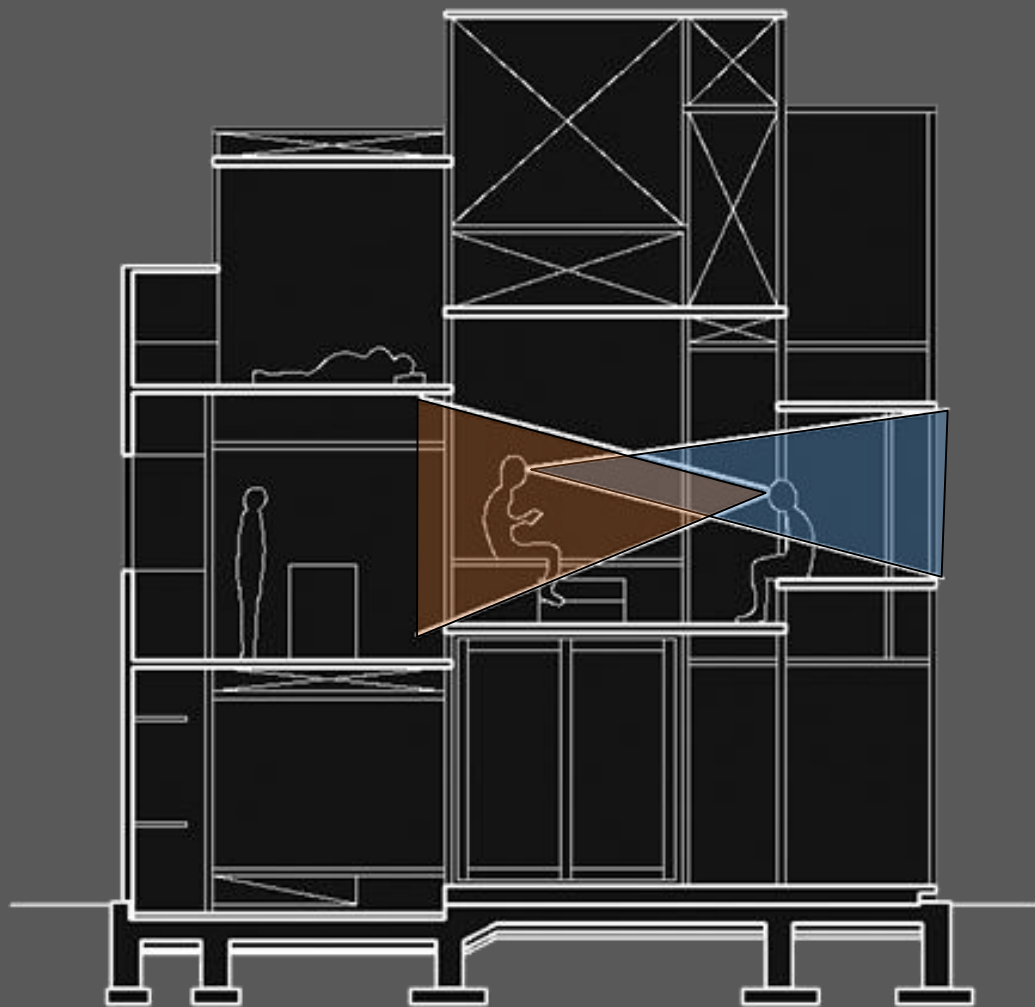
内部视野图



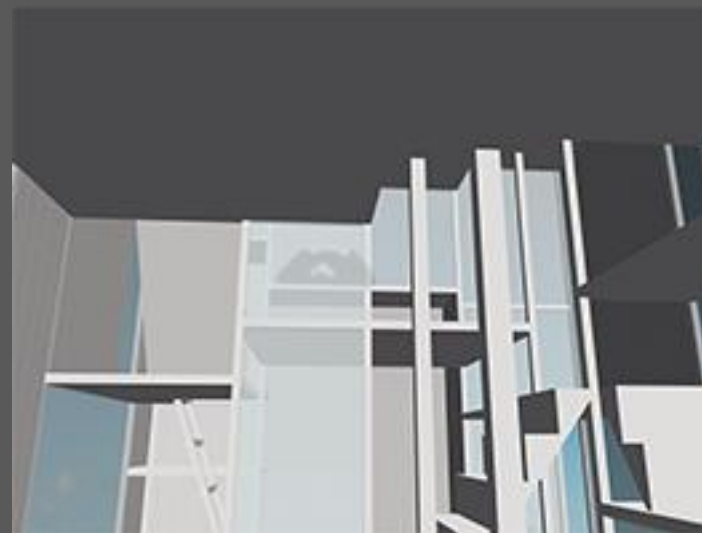
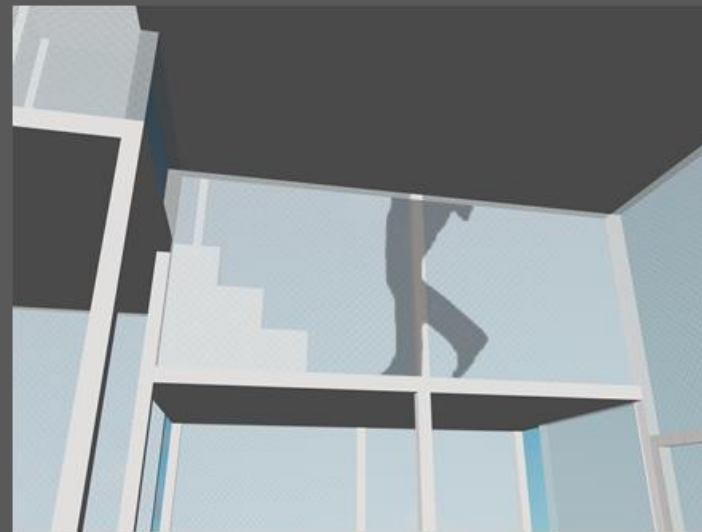
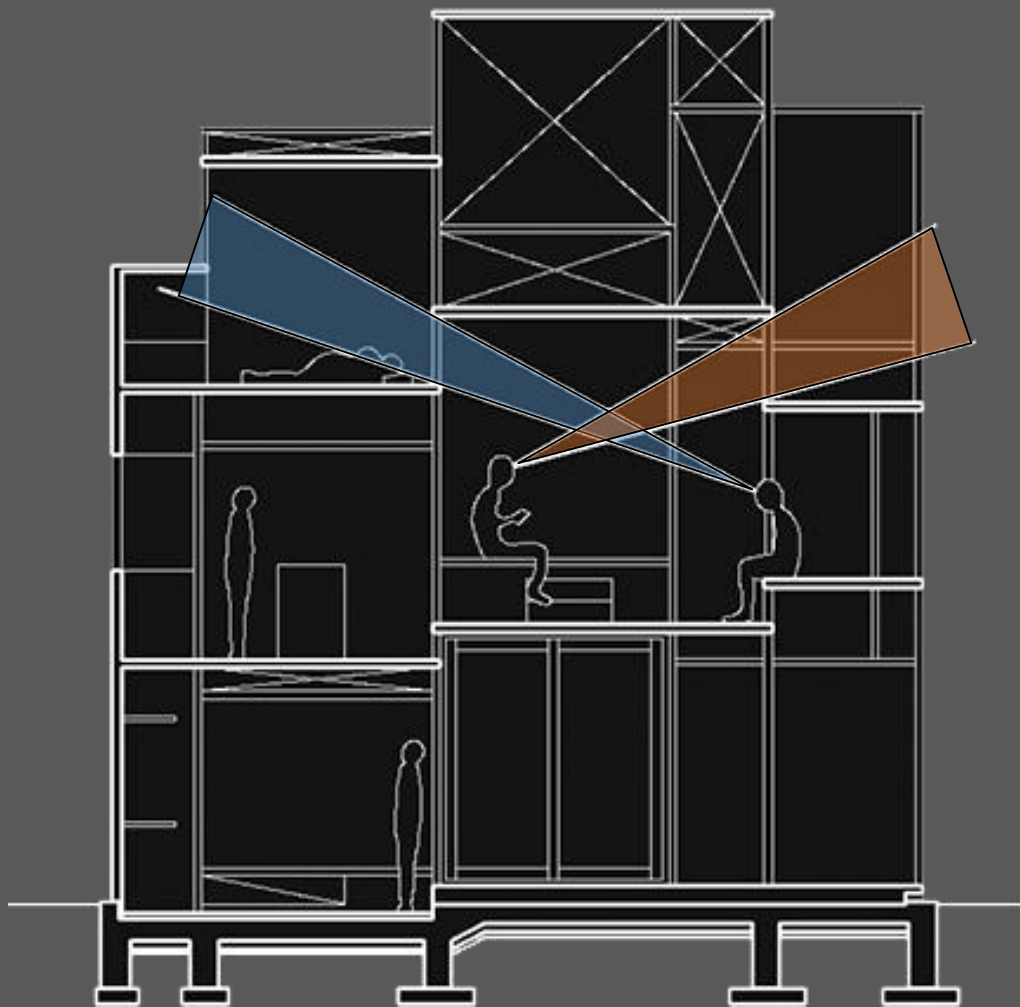
# 视线交流



# 视线交流



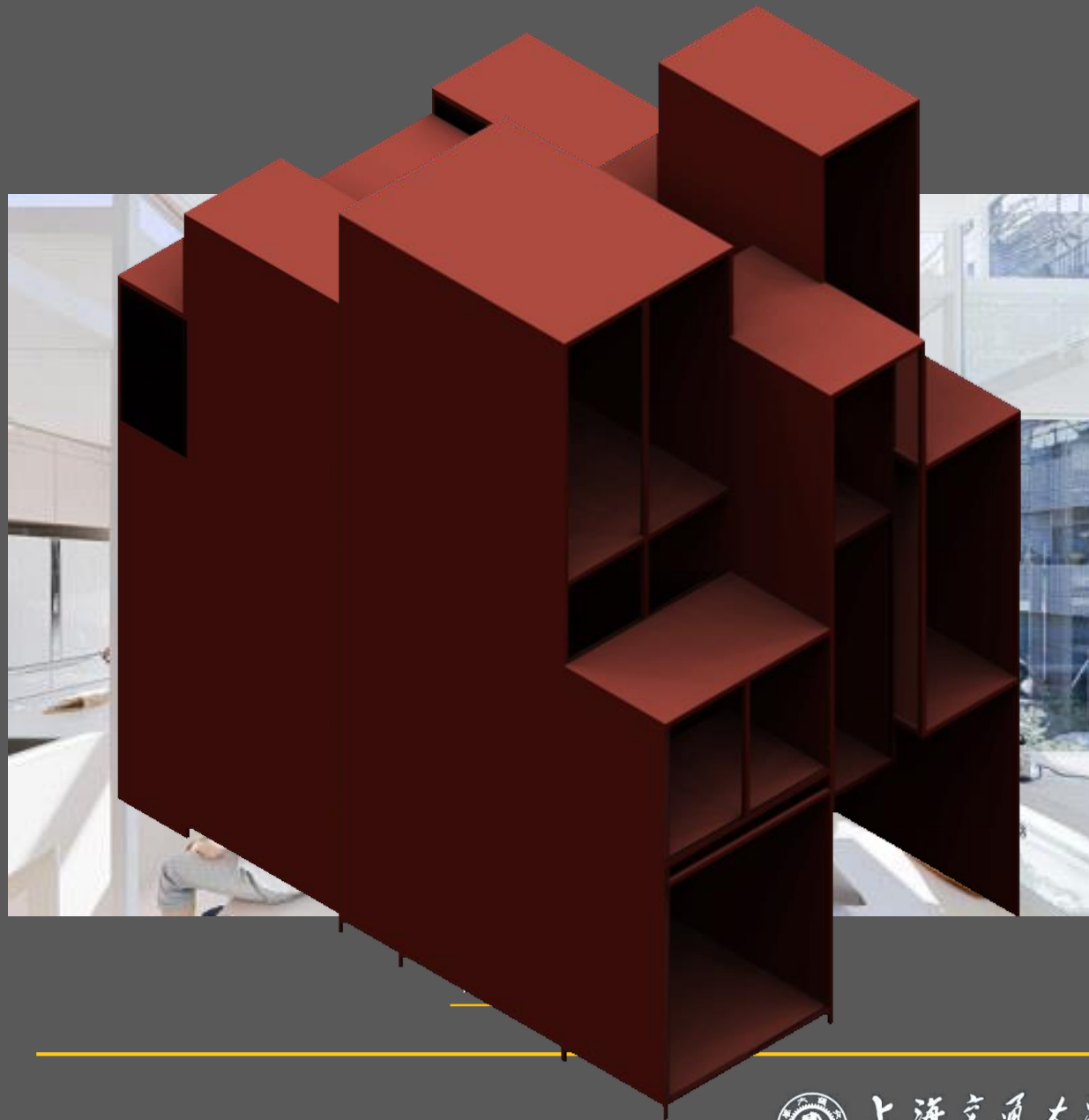
# 视线交流



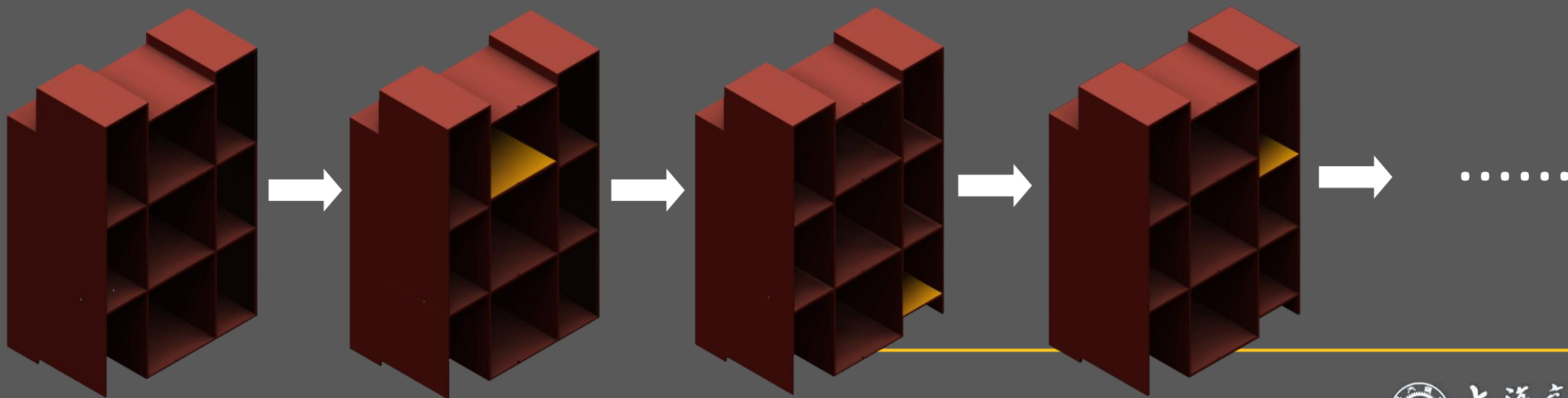
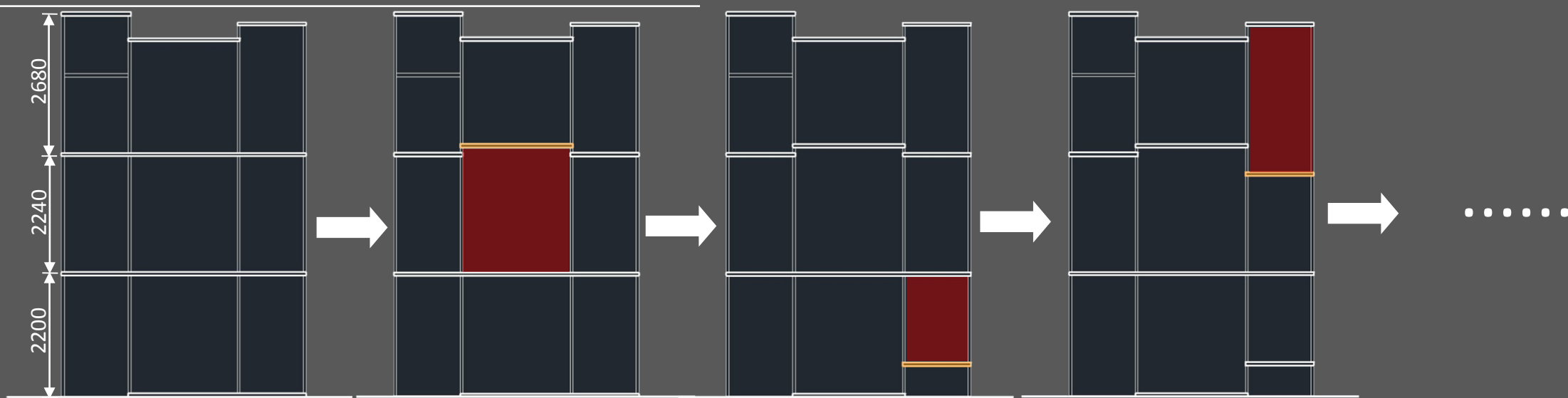
# 内部空间

空间特点——

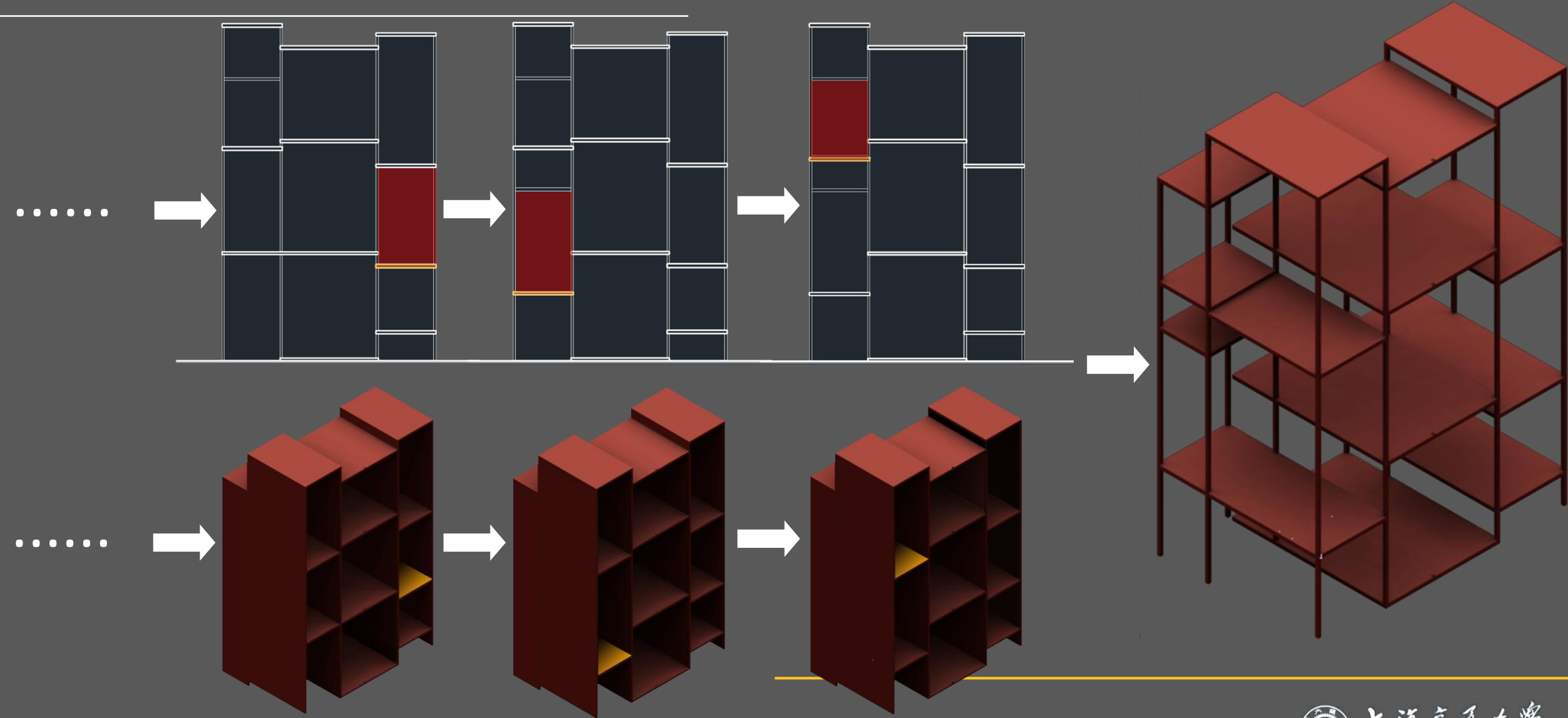
方格空间；  
依照功能，  
略微错位。



# 内部空间



# 内部空间



谢谢观看

07小组