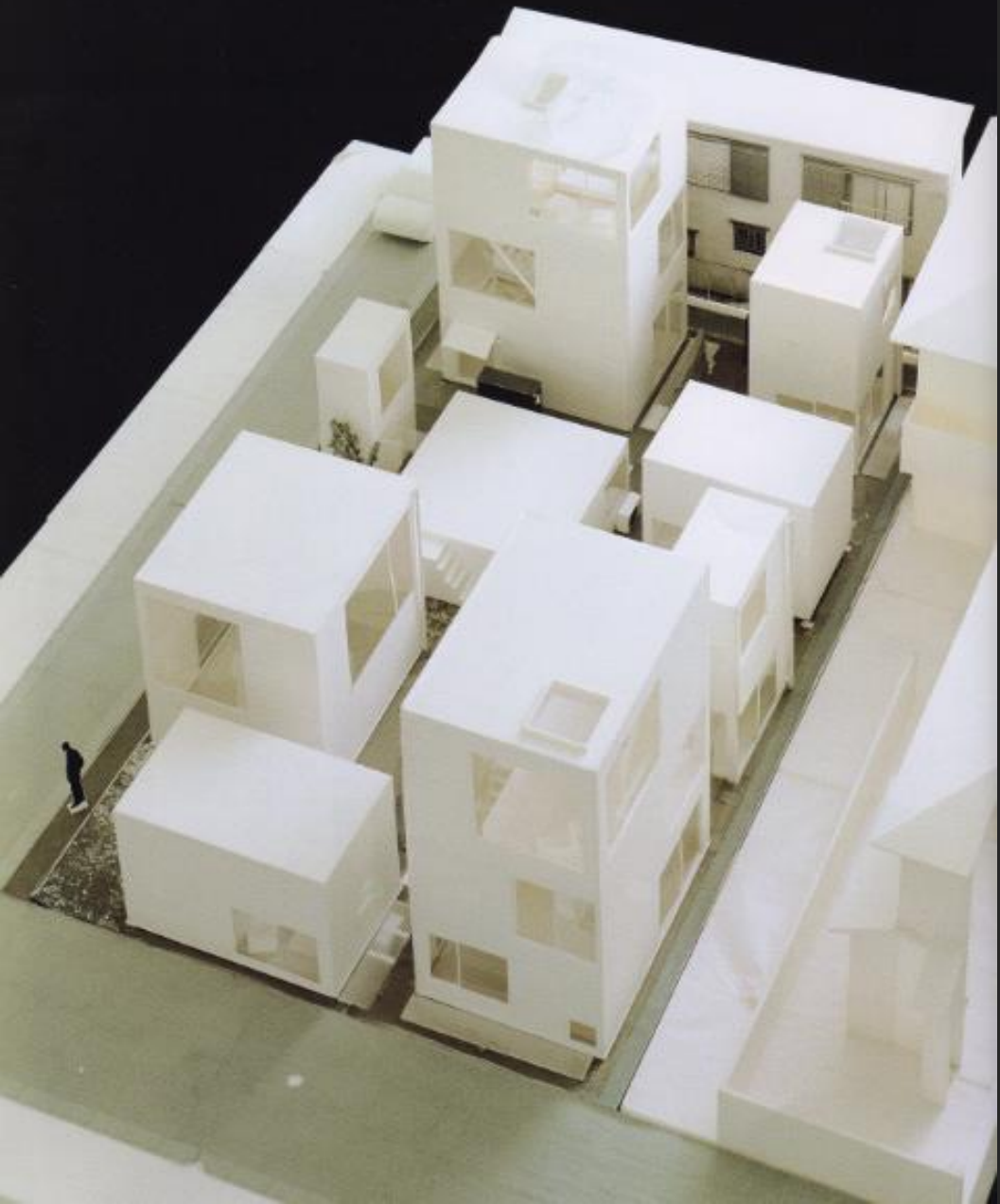


Moriyama House/森戸邸

Office of Ryue Nishizawa



建筑师概况

2010普利兹克奖



1995: SANAA事务所



1987
妹岛和世
事务所

伊东丰雄事务所



1997
西泽立卫
事务所



相似
设计理念
与手法

细致

简洁

直观

变焦
观察空间

轻盈

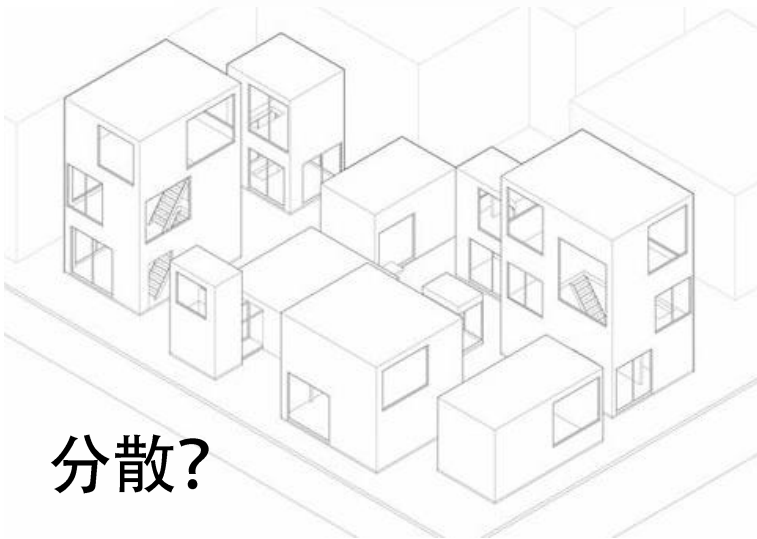
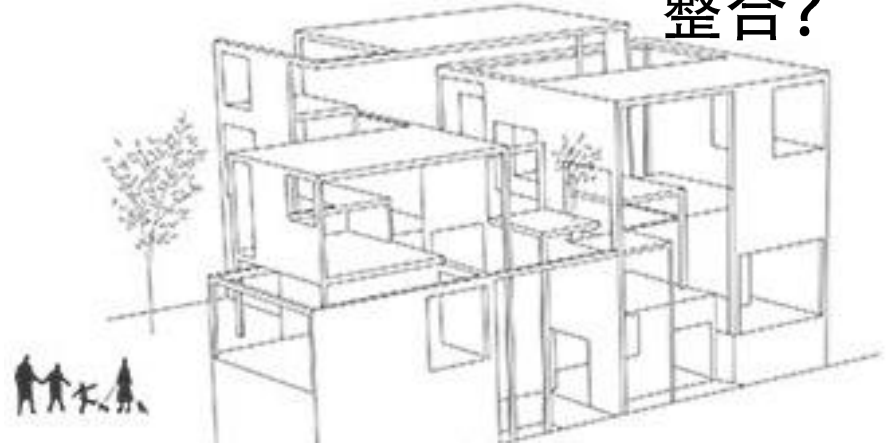
白色

平面图
设计法

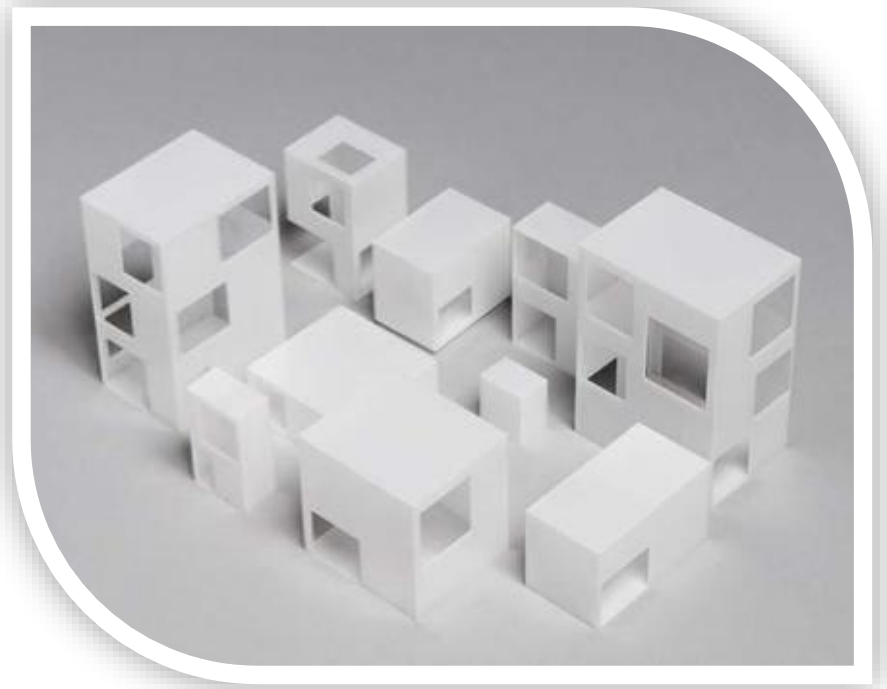
轻盈

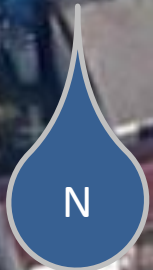
透明

整合?



分散?





21



1.城市肌理

东京较传统地区的建筑体量



2.以房养房

以租金收入分摊买地建屋贷款

3.三方居住需求



Owner



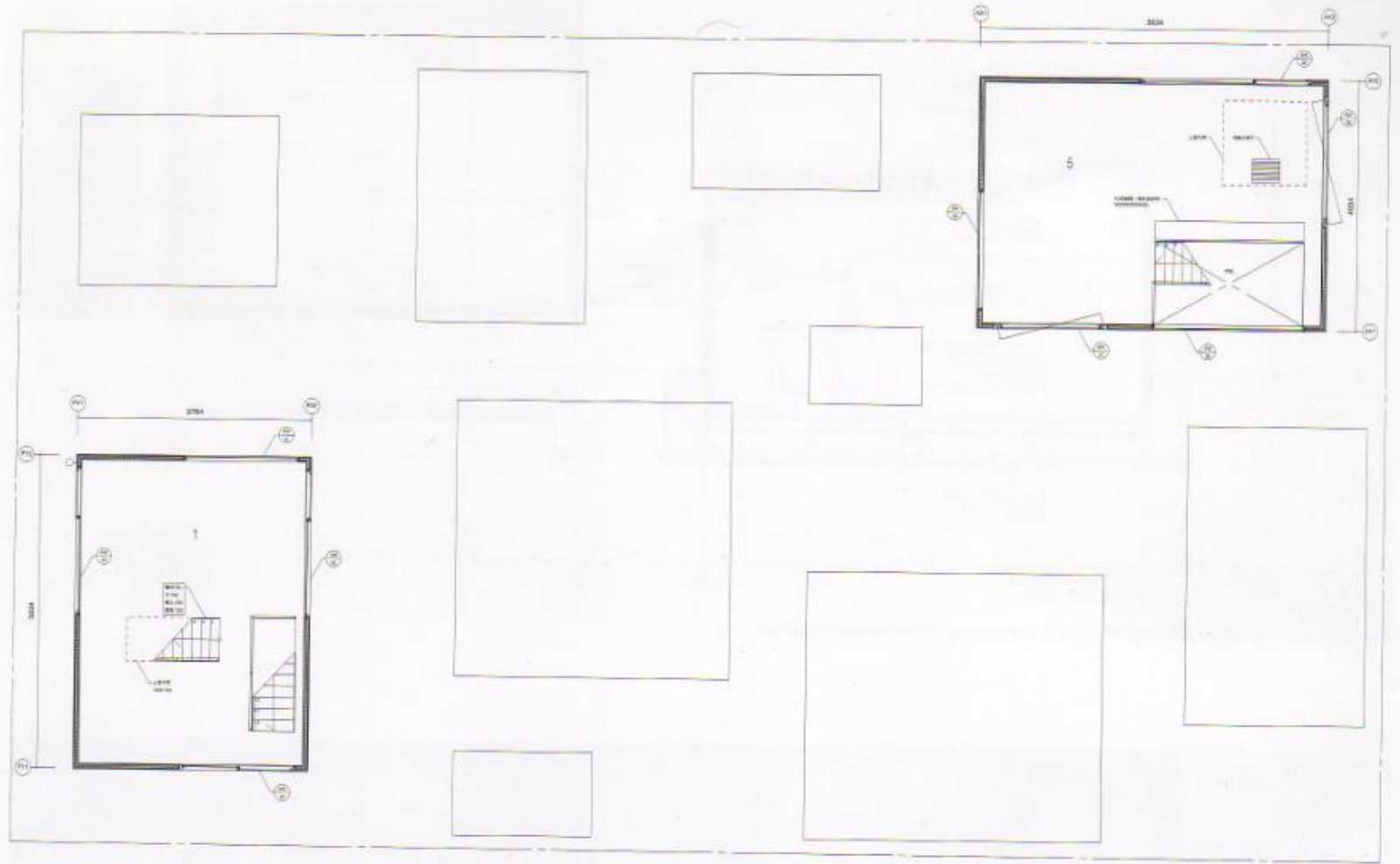
Maid



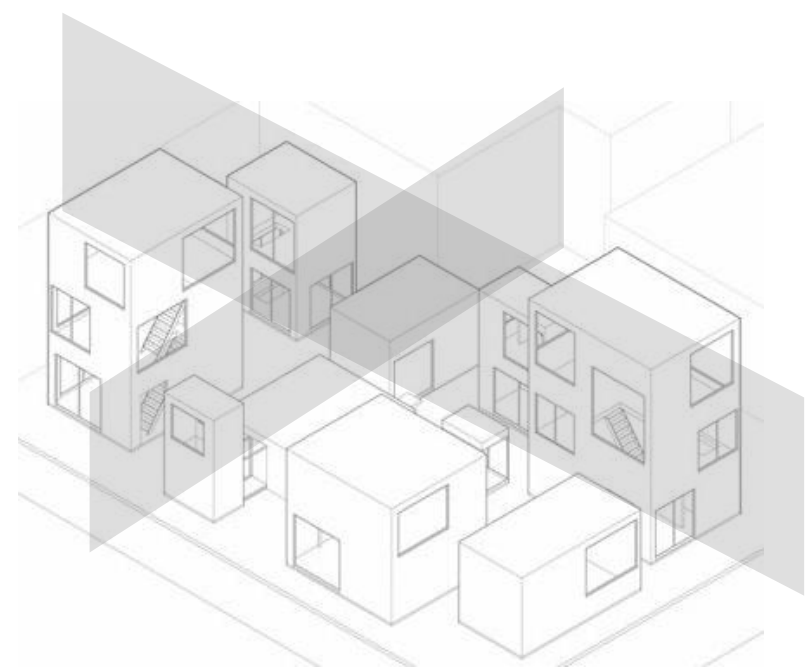
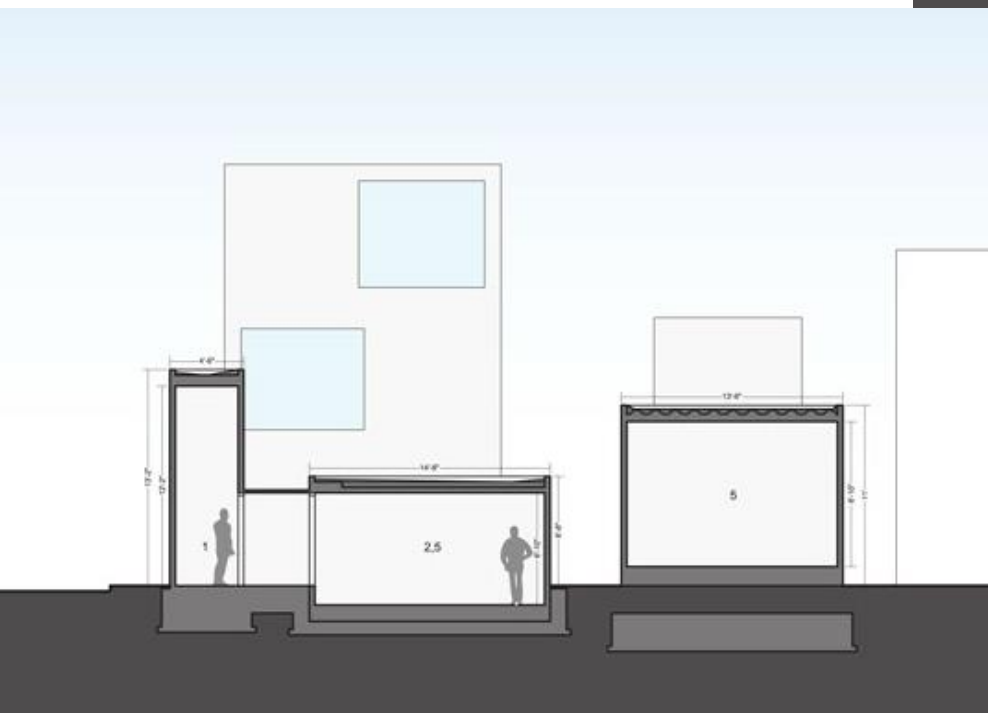
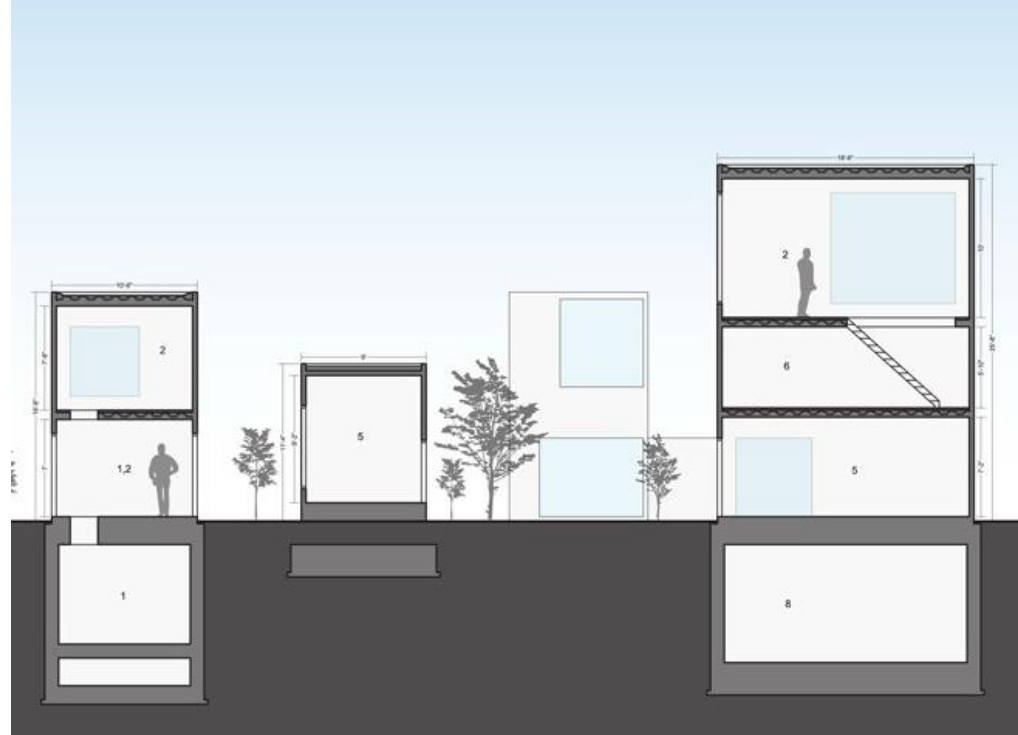
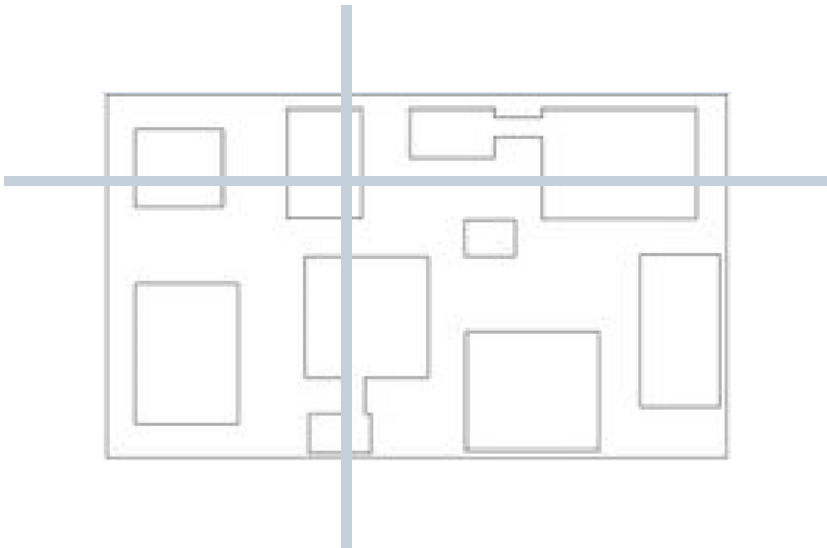
Tenants



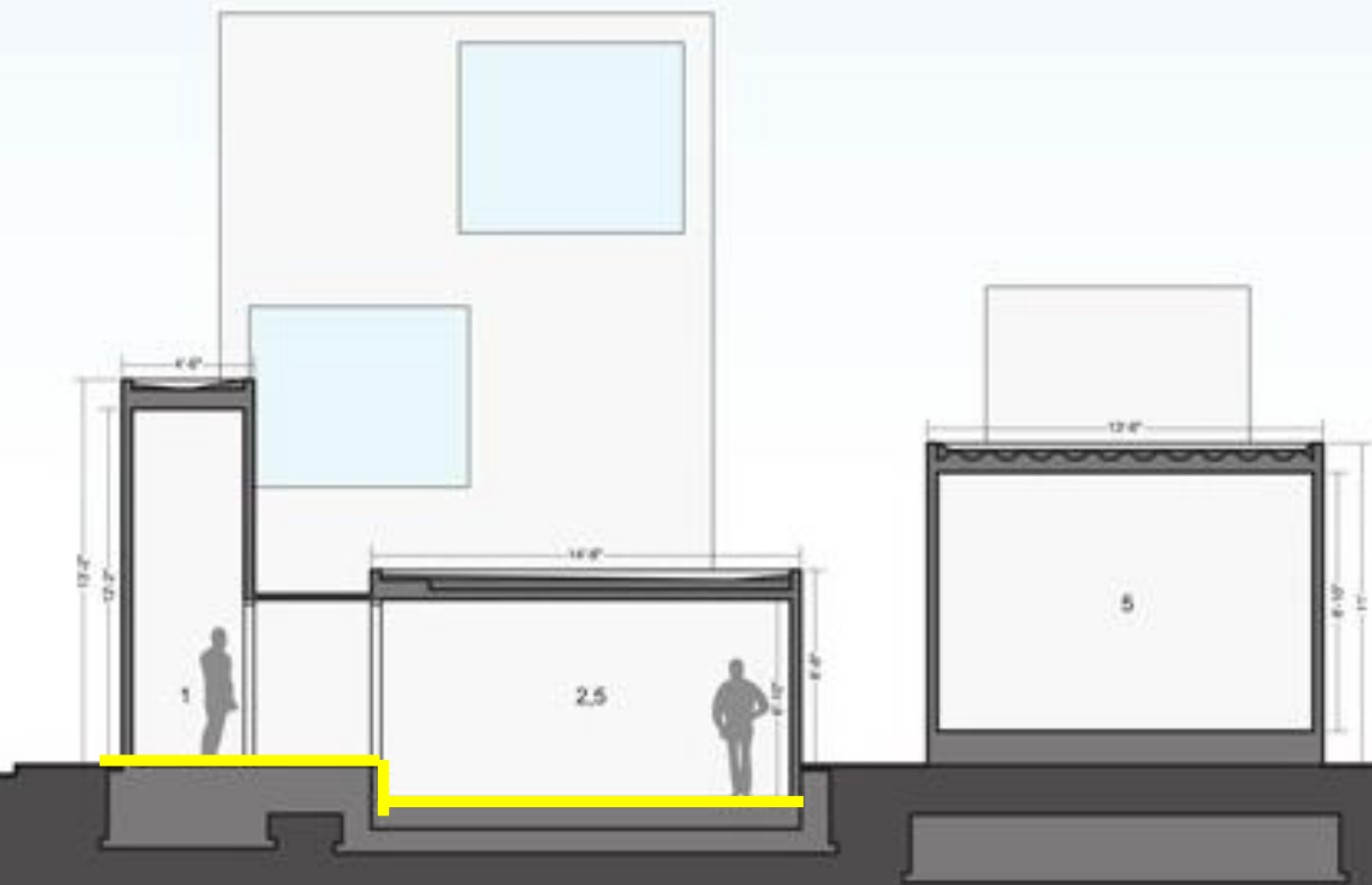
Street

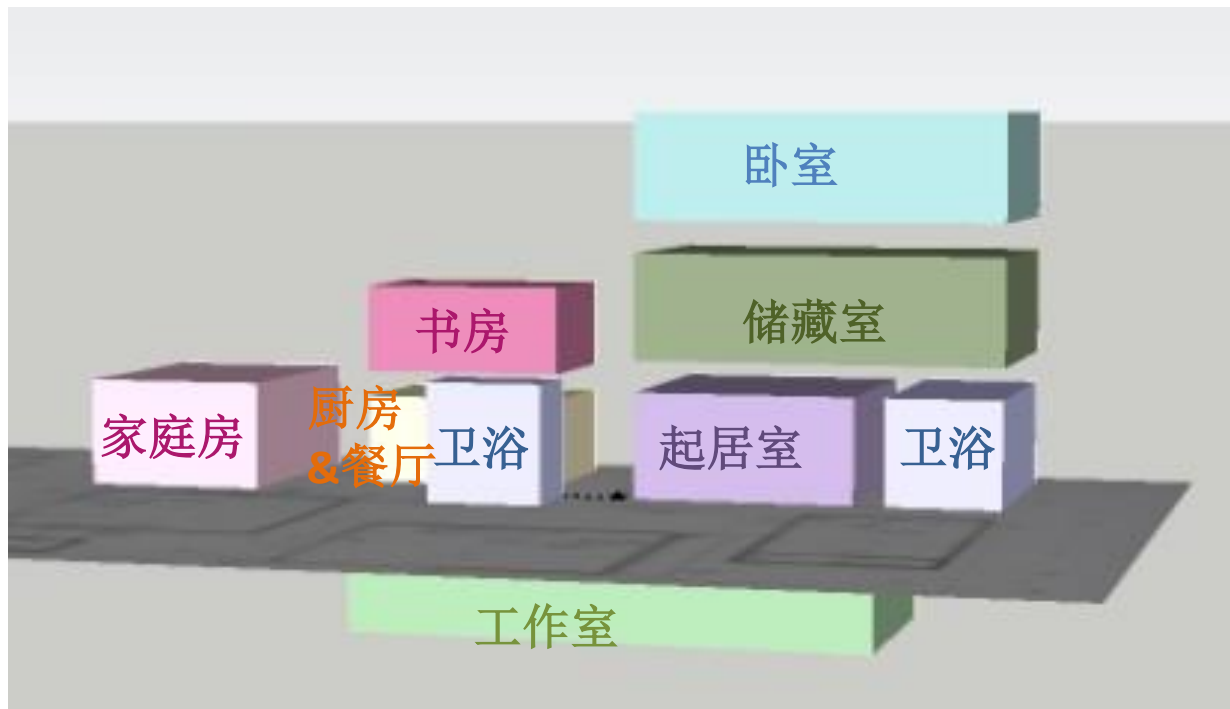
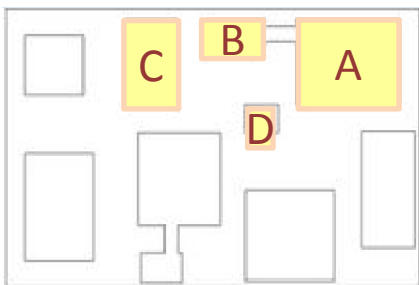


- 3 F



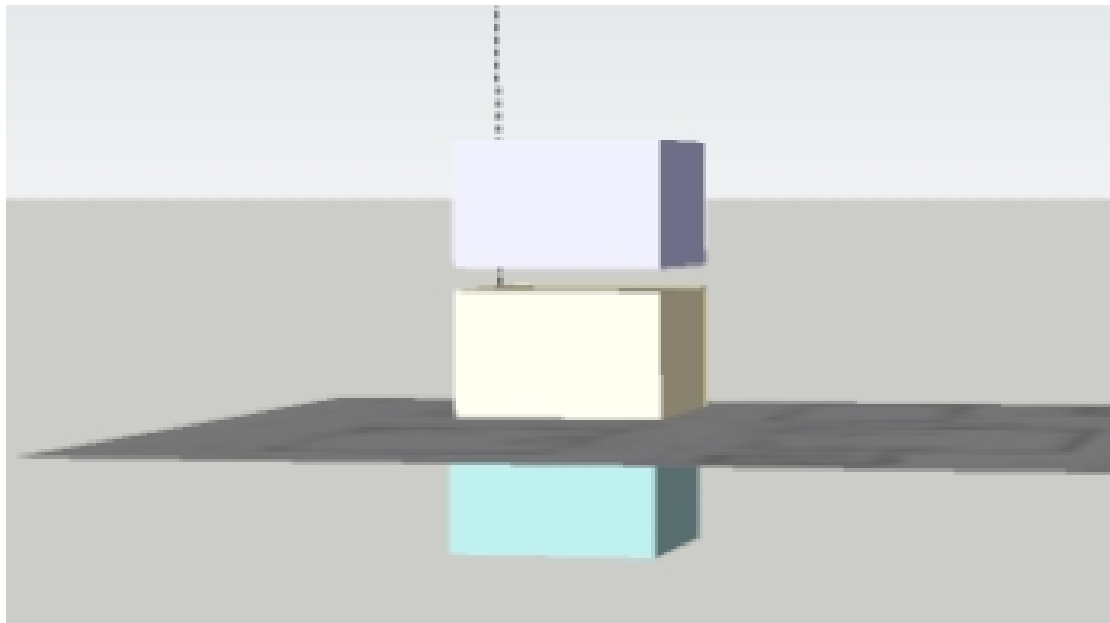
地面高度差





户主区





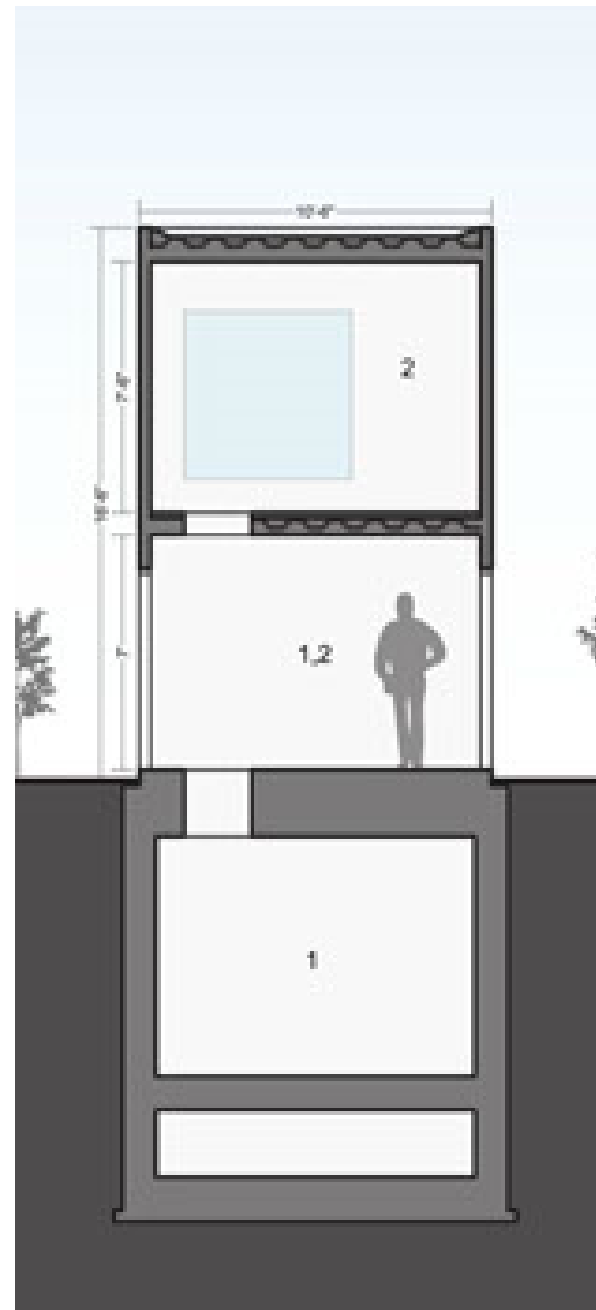
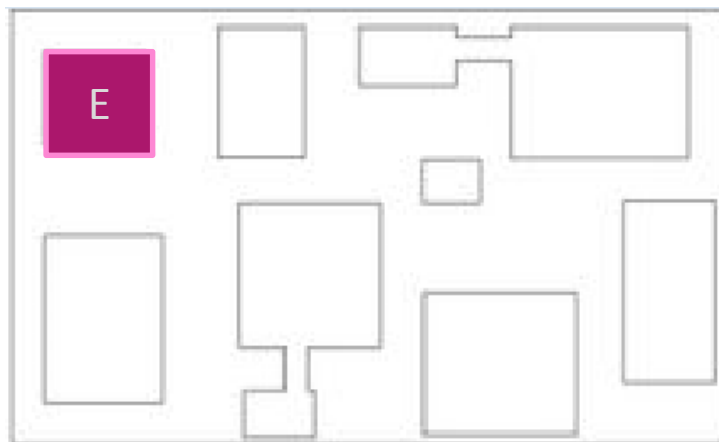
厨房
& 餐厅



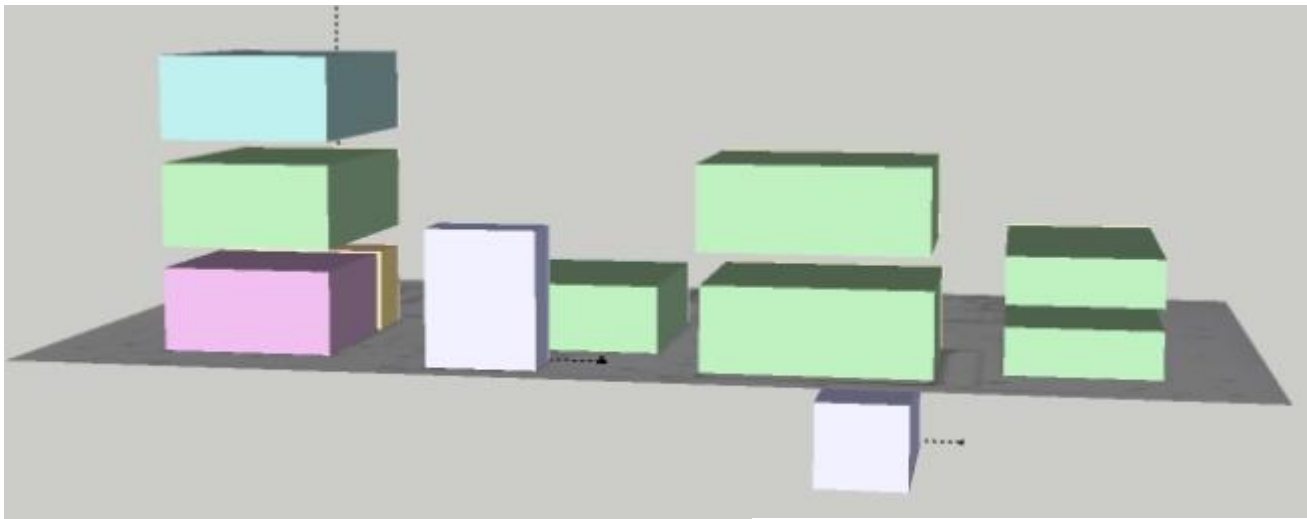
卫浴



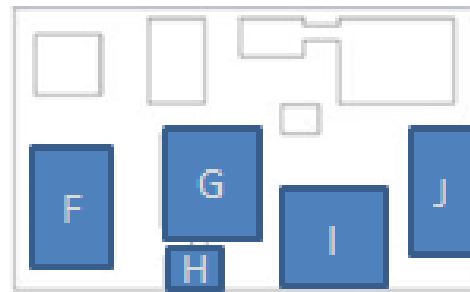
卧室



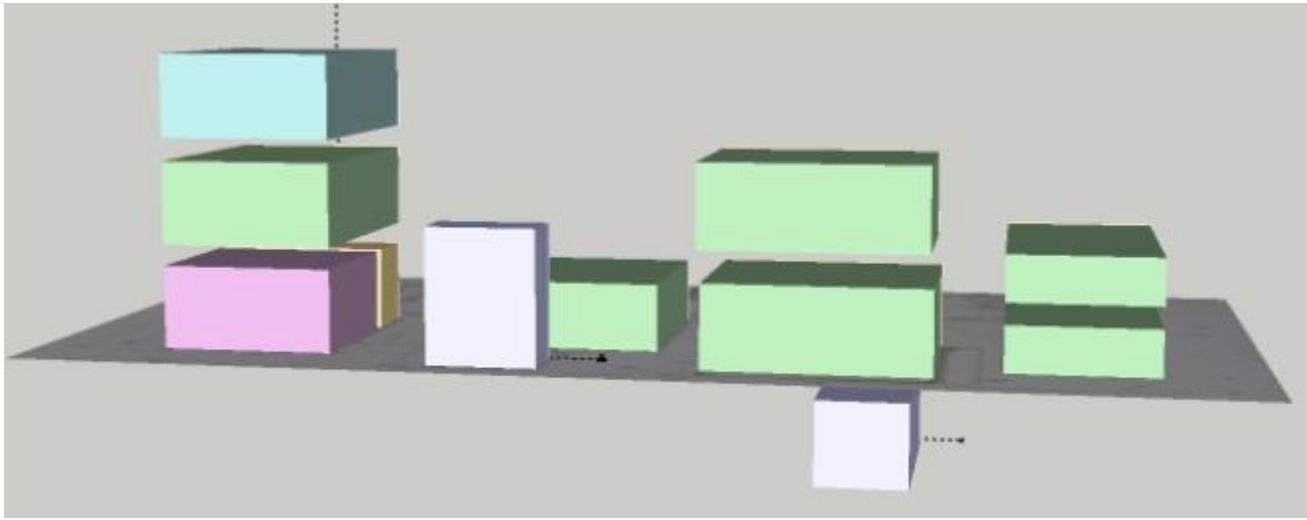
女佣区



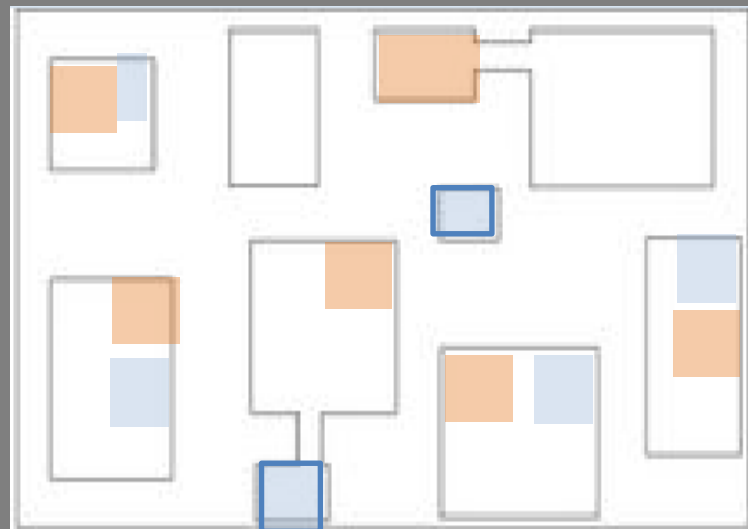
租客区



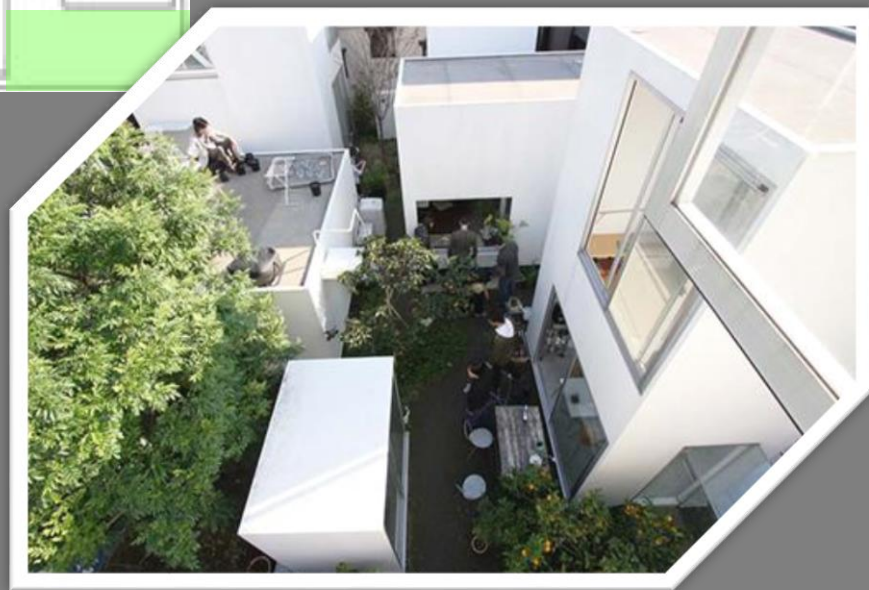
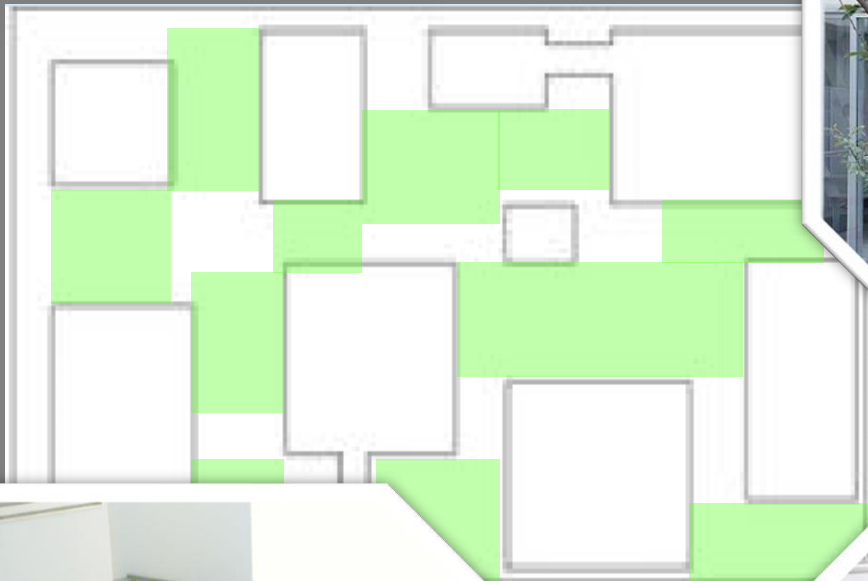
- 厨房&餐厅
- 多功能 (含厨卫)
- 起居室
- 卫浴
- 卧室



厨房卫浴的重点布置



庭院



门窗分布与透明性



建筑构造

排水管

排污管

预制
钢板

绝缘
层

墙面
8.5cm



参考资料

EL044 El Croquis 121 + 122

胡春：《解读西泽立卫森山住宅》，《住宅科技》2013年第05期

铃木明：《集合的房屋碎片》，《domous中文版》2006年7月01期

[://issuu.com/aristip/docs/moriyama_house](http://issuu.com/aristip/docs/moriyama_house)

http://www.structuredenvironment.com/project_gallery/pg04.html