

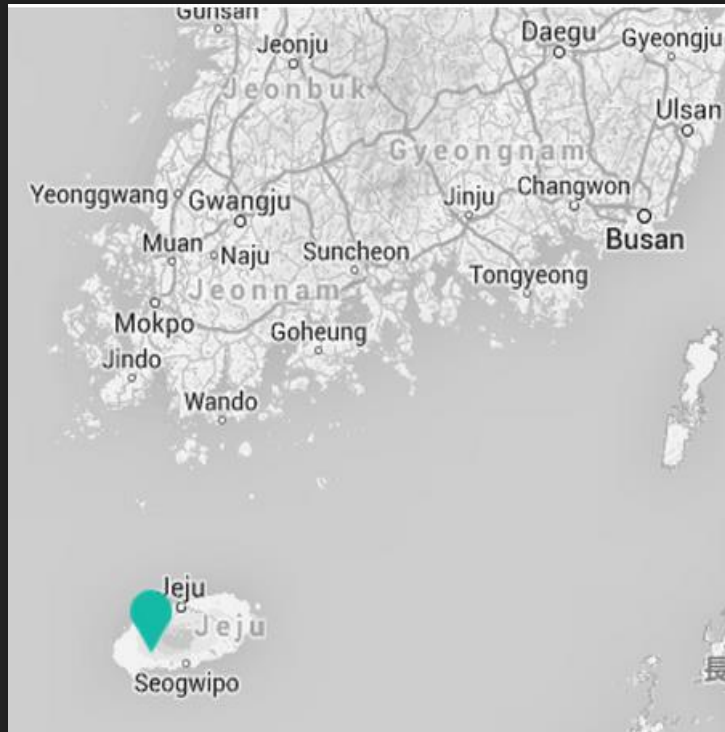
Church of Sky

建筑范例解读

李潞 张胤嫻

濟州島

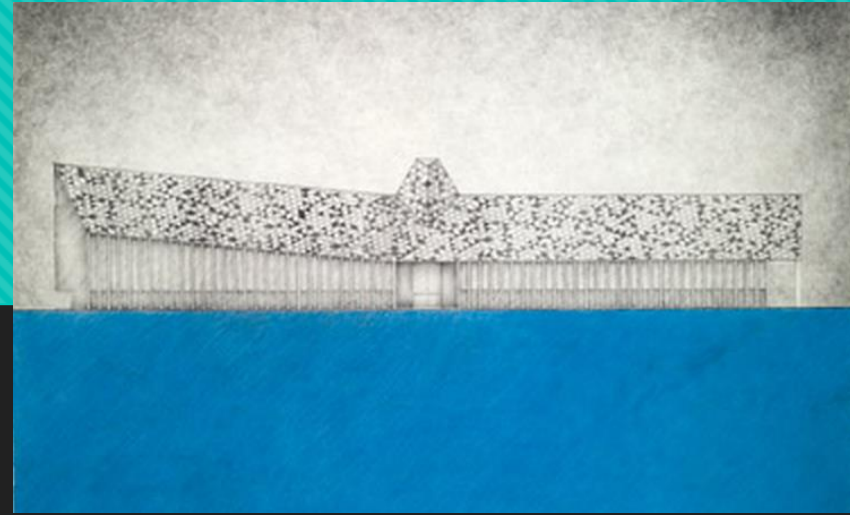
三多三無



Panorama



Catalogue



□ Basic information

□ **The analysis of the drawings**

Site Relationship Spatial Analysis

□ **Characteristic**

Architectural Structure Protestantism

□ Achitect

Basic Information

所在地 大韩民国济州自治岛西归浦安德面
上川里427

主要用途 基督教会+住宅

建筑设计 伊丹润 Itami Jun Architects

规模 占地面积 $3,588.0\text{m}^2$

建筑面积 661.4m^2

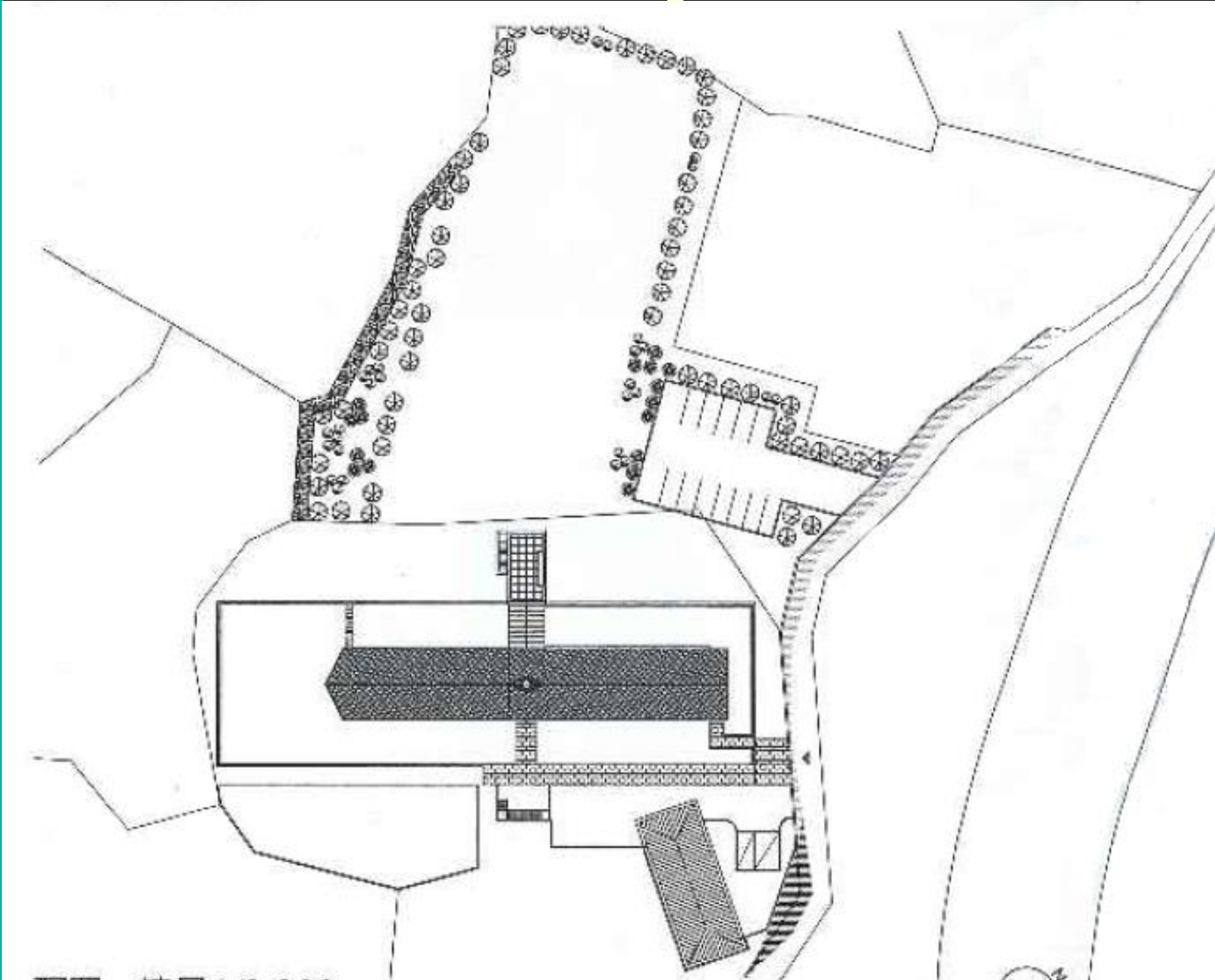
延床面积 $1,259.9\text{m}^2$

建筑层数 地下1层 地上2层

建成日期 2009.3



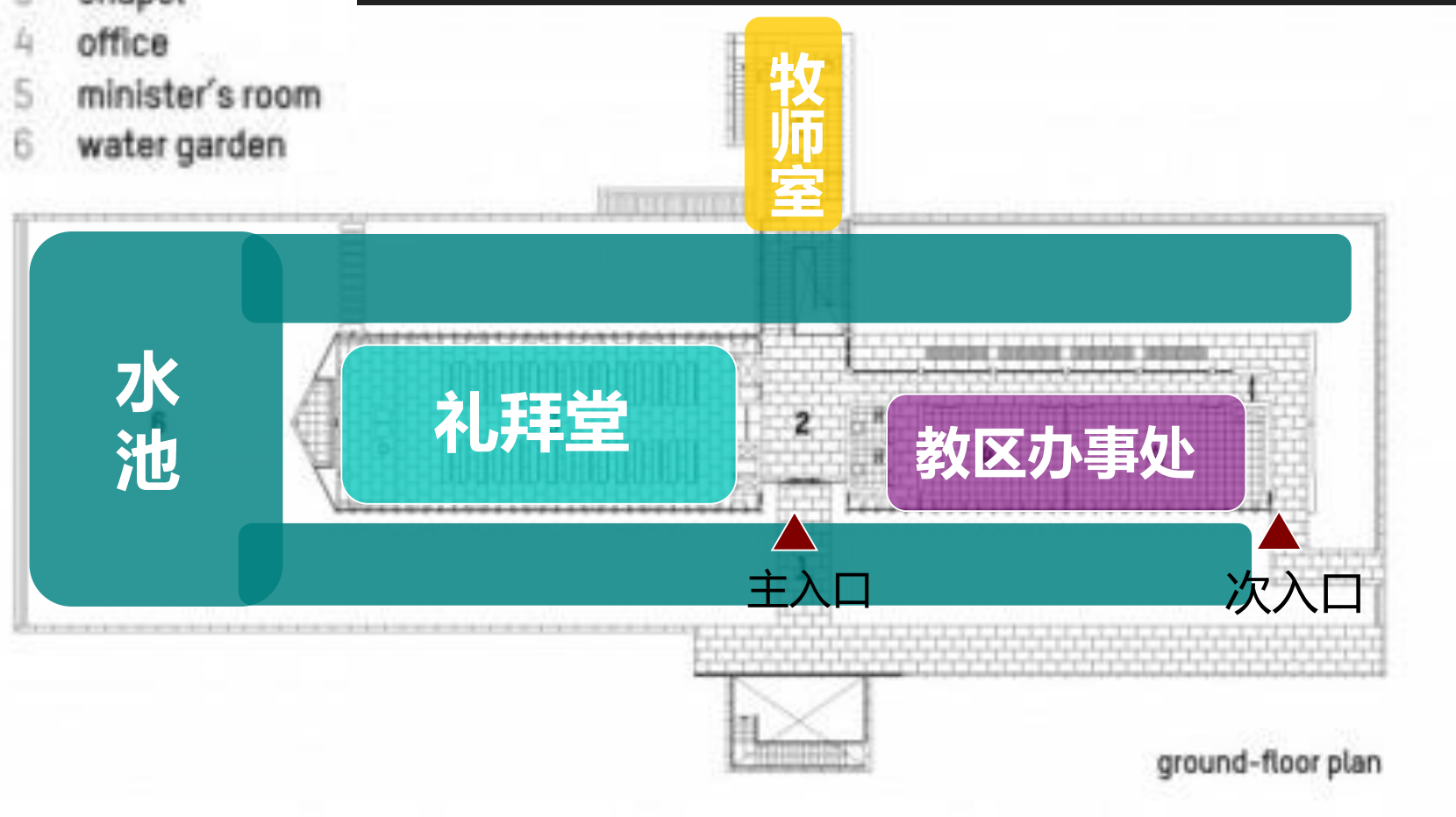
Site Relationship



Spatial Analysis

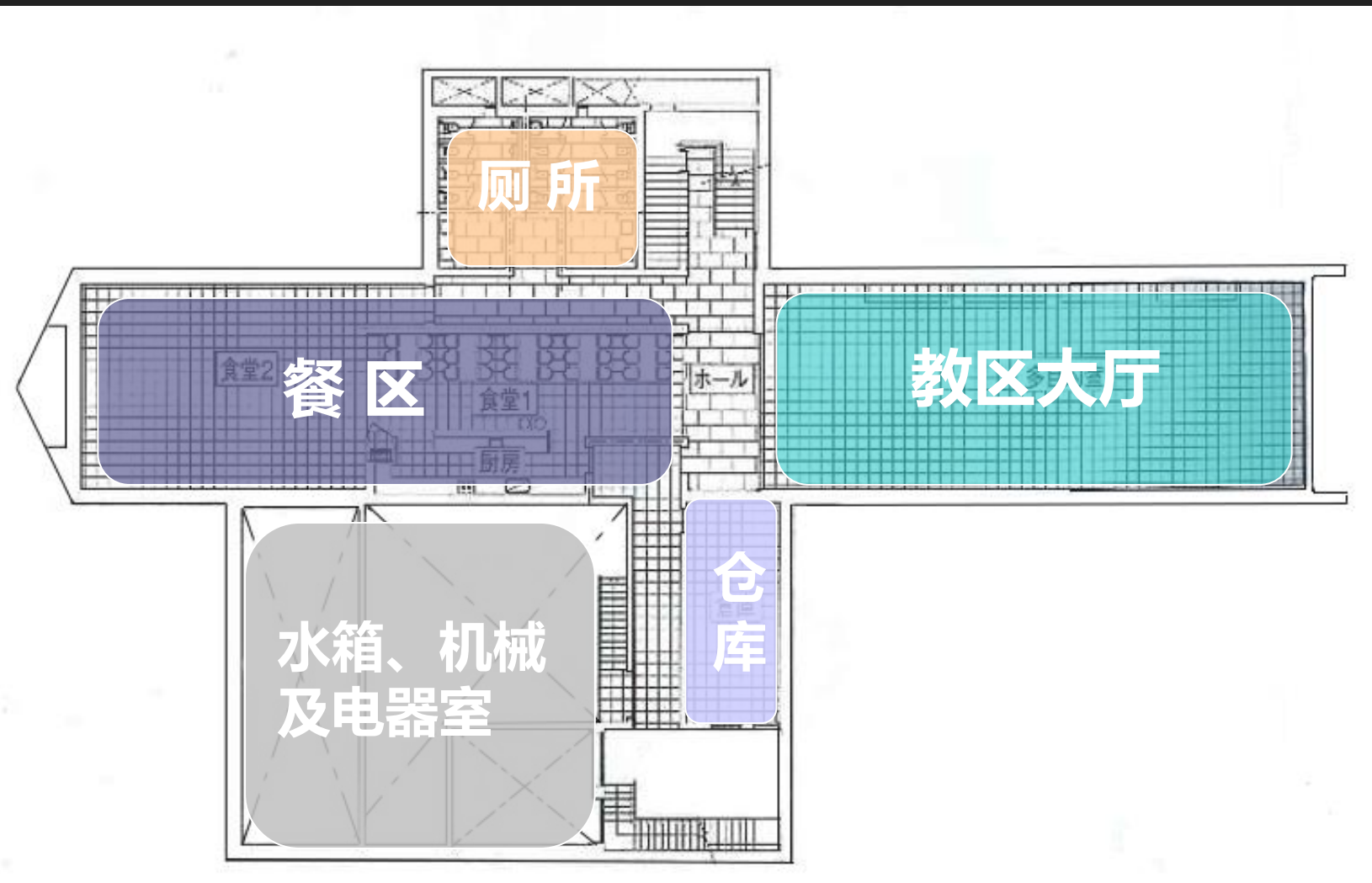
- 1 entrance
- 2 entrance hall
- 3 chapel
- 4 office
- 5 minister's room
- 6 water garden

the drawing of the first floor

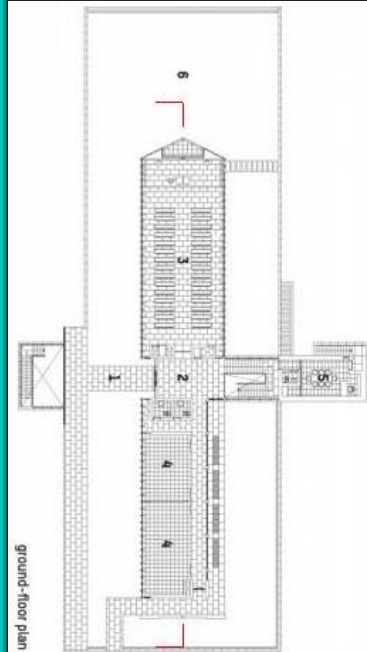


Spatial Analysis

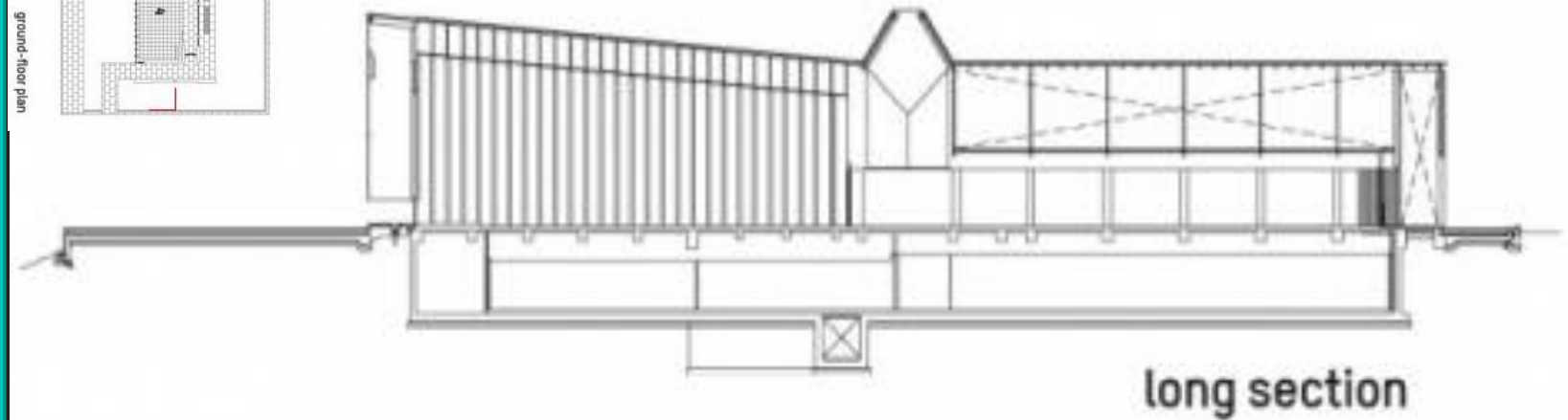
the drawing of the basement



Spatial Analysis

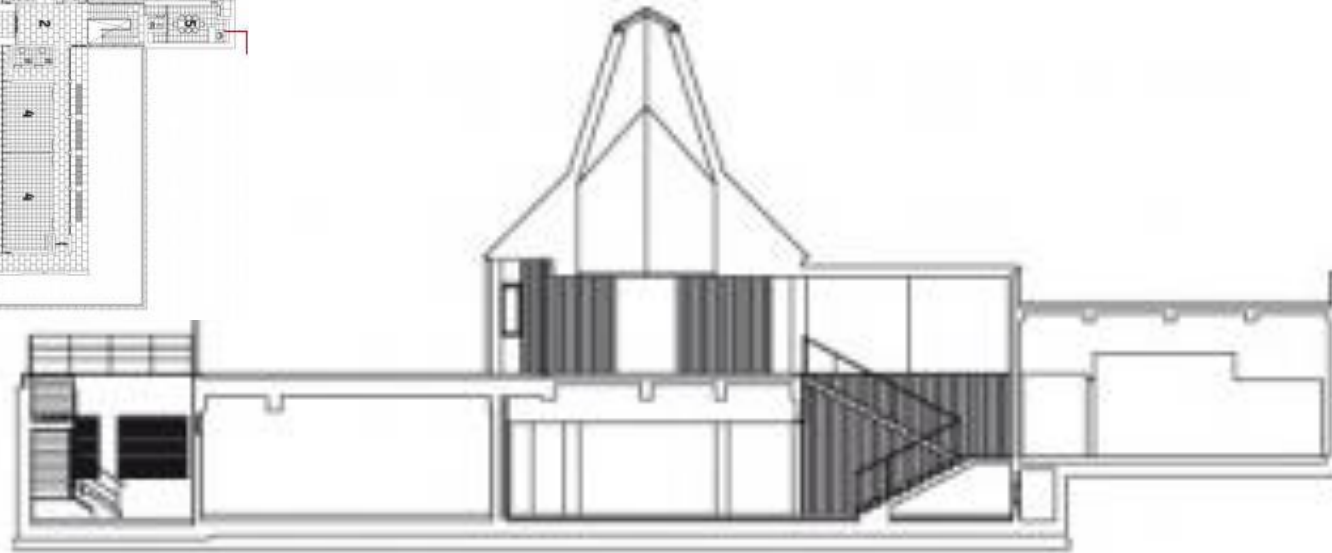
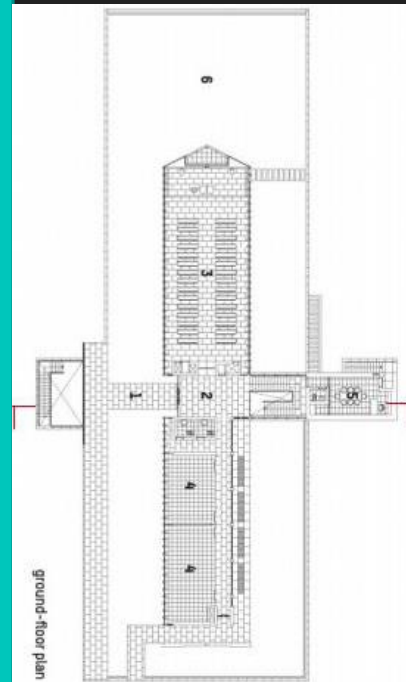


the drawing of the the long facade



Spatial Analysis

the drawing of the short facade



cross section



Architectural

屋面

三角形锌板

从无烟煤到石英三种
颜色不同的涂料

规则排列在电脑设定
的模块里

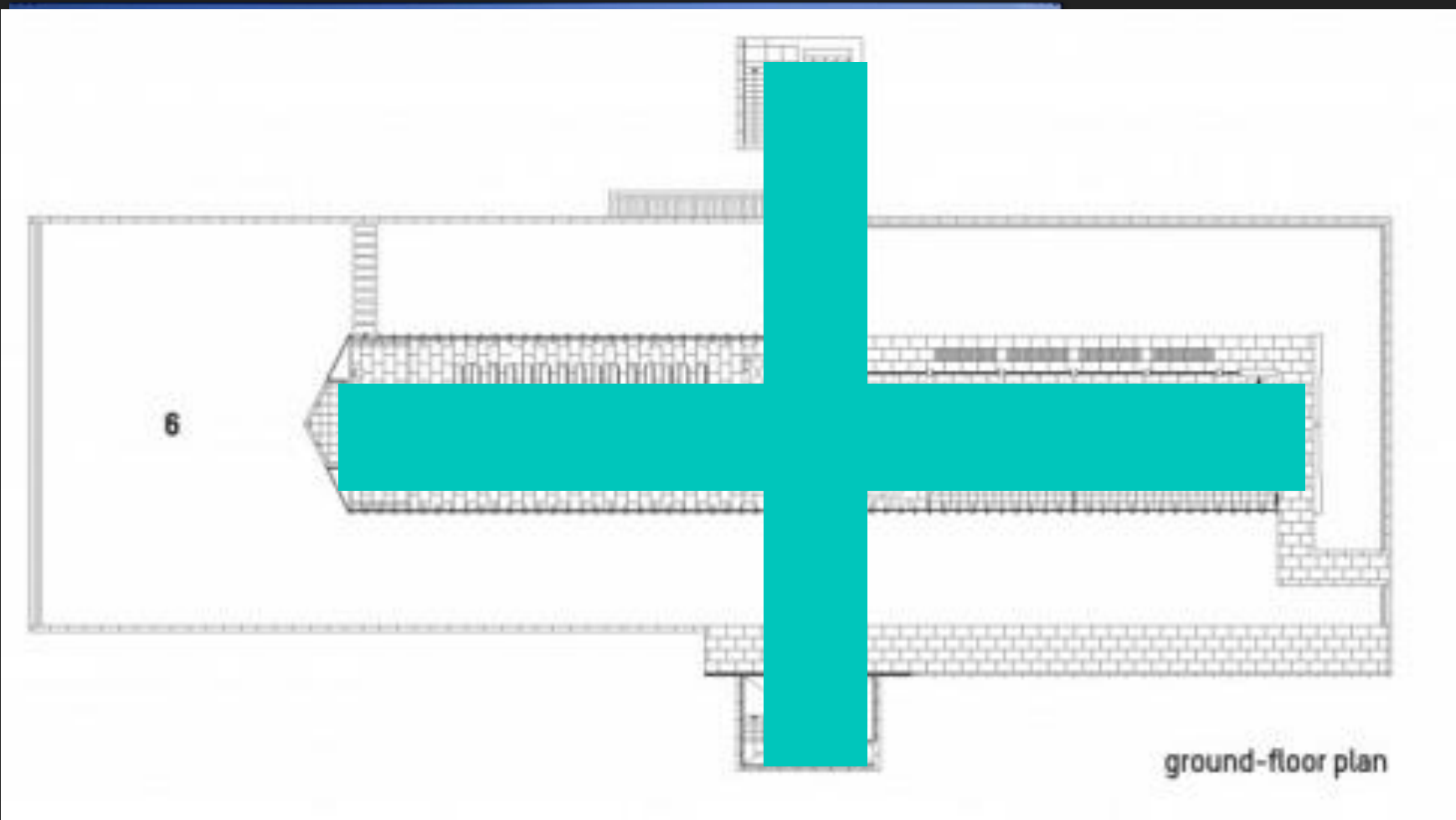


Structure

木材
钢结构



Protestantism

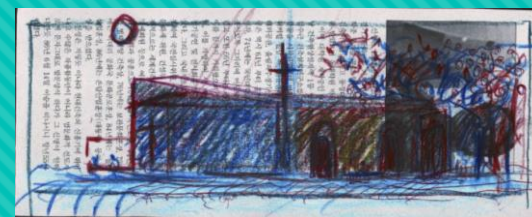
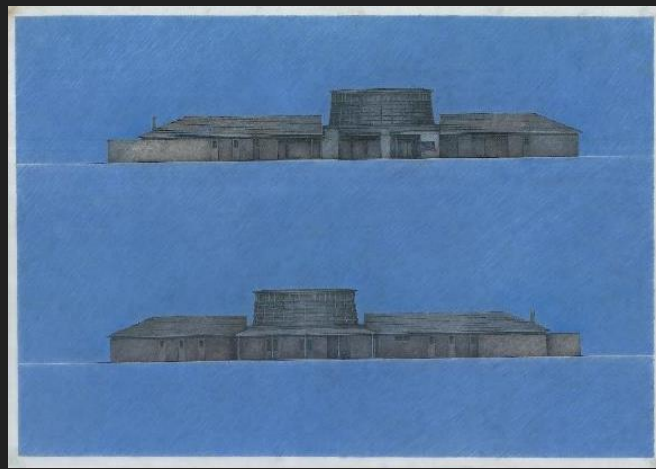
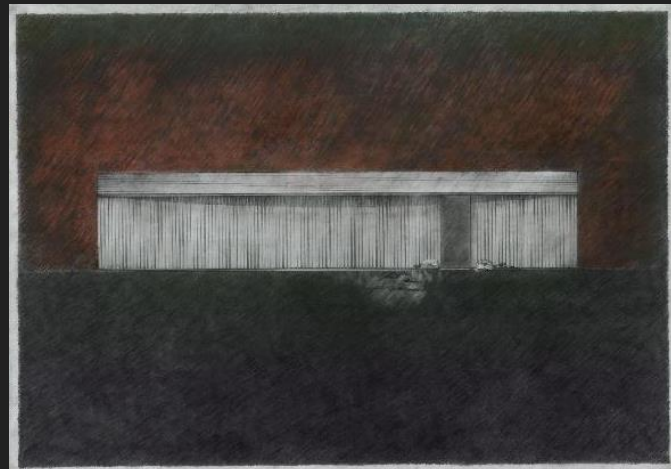
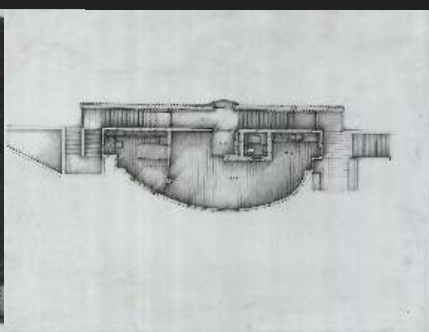
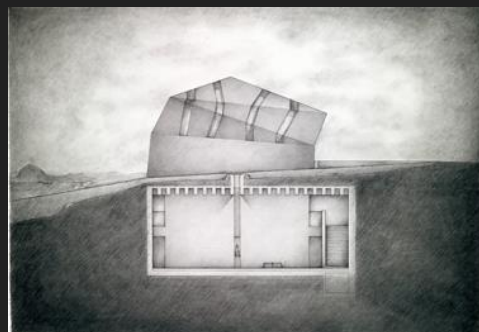
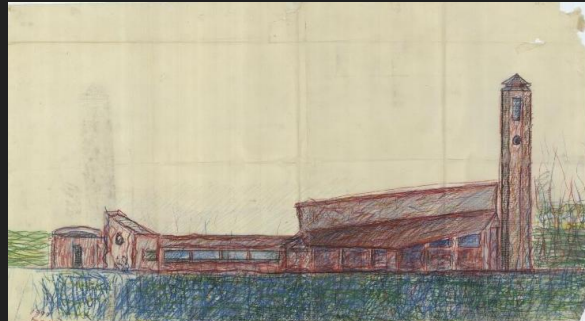
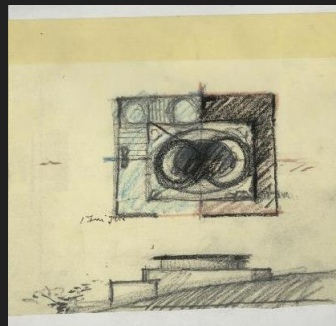
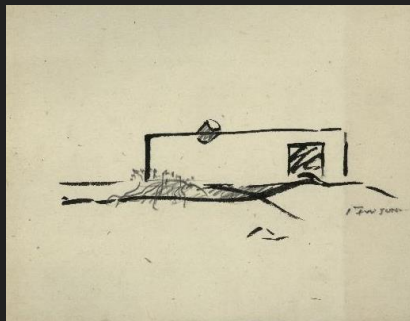


伊丹潤

Itami Jun



1937年東京出生。1964年畢業於武蔵工業大学建築学
1968年設立伊丹潤建築研究所。2011年6月逝去

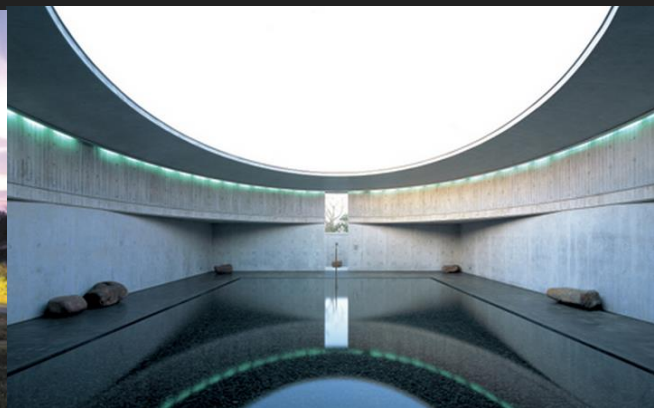


水、風、石、土地
伊丹潤
手繪建築師



風美術館

石美術館



水美術館

Reference

- <手の痕跡>伊丹潤/2011
- <新建築>/1002
- National Museum of Modern and Contemporary Art Website
- <E-SPACE>電子雑誌
- <http://phaidonatlas.com/architect/itami-jun-architects/1433>
- <http://article.wn.com/view/WNAT1e040c618044bad1a0231c175153b0c1/>

Thank you
for listening

