

范例分析

——Figured Glass House

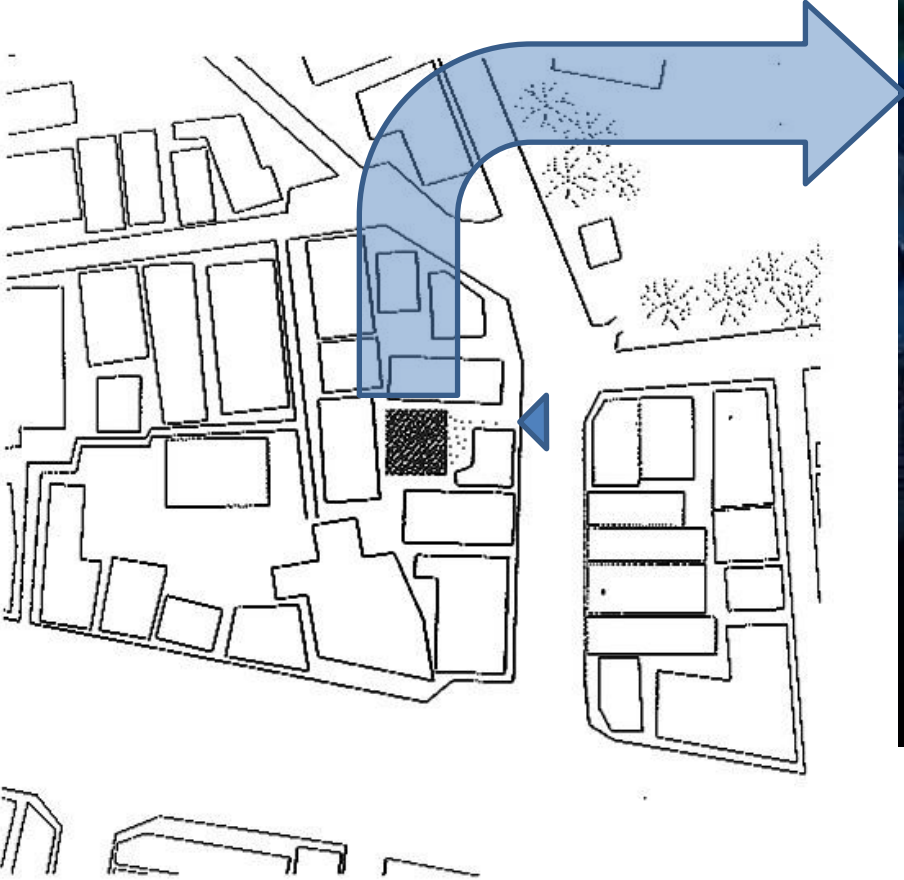
小组成员： 张晶晶
曾 瑜

日 期： 2012-4-16

鸟瞰东京都



Figured Glass House



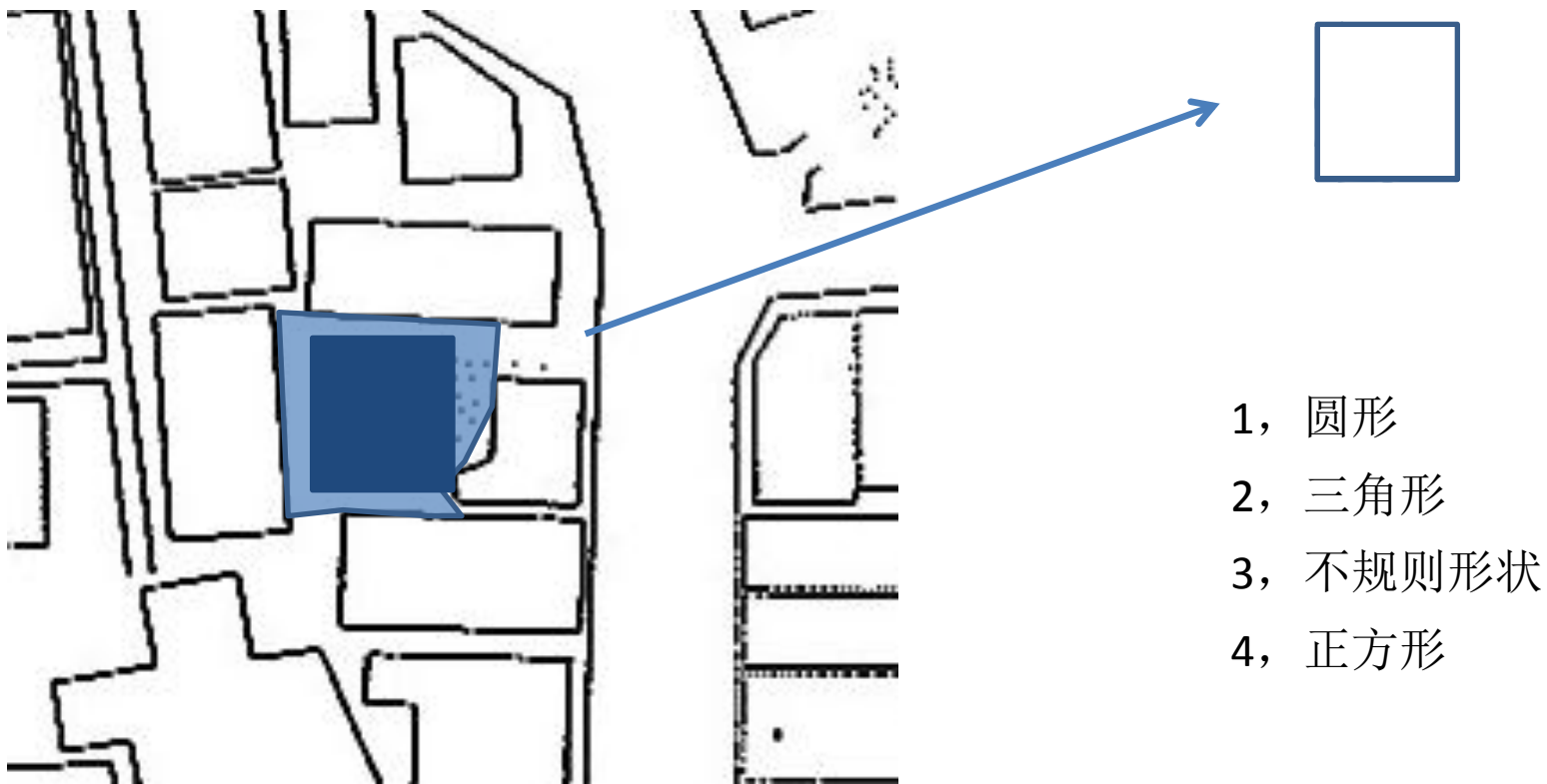
限制：

1. 基地建筑密集，可用面积小
2. 楼层高度受到限制
3. 协调办公与居住



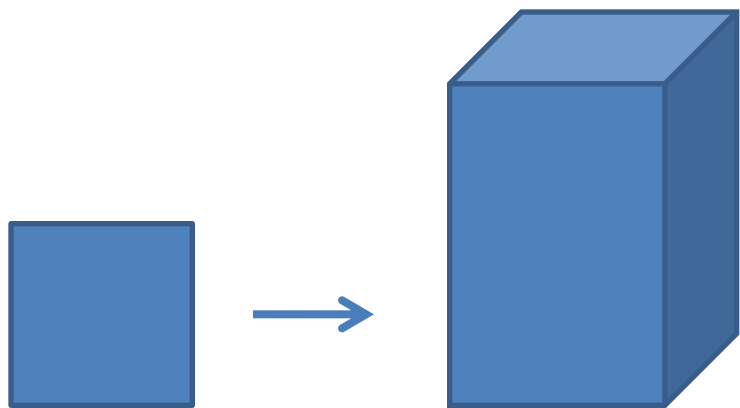
解决方案：

1. 为了最大程度使用基地，选择正方形作为建筑平面
2. 使用大片的磨砂玻璃幕墙，引入更多光照
3. 用两条相对独立的流线加以分割，在实现办公作用的同时保护了居住者的私密性。
4. 利用错层，开洞，尺度的控制最大程度的实现了建筑的各种功能

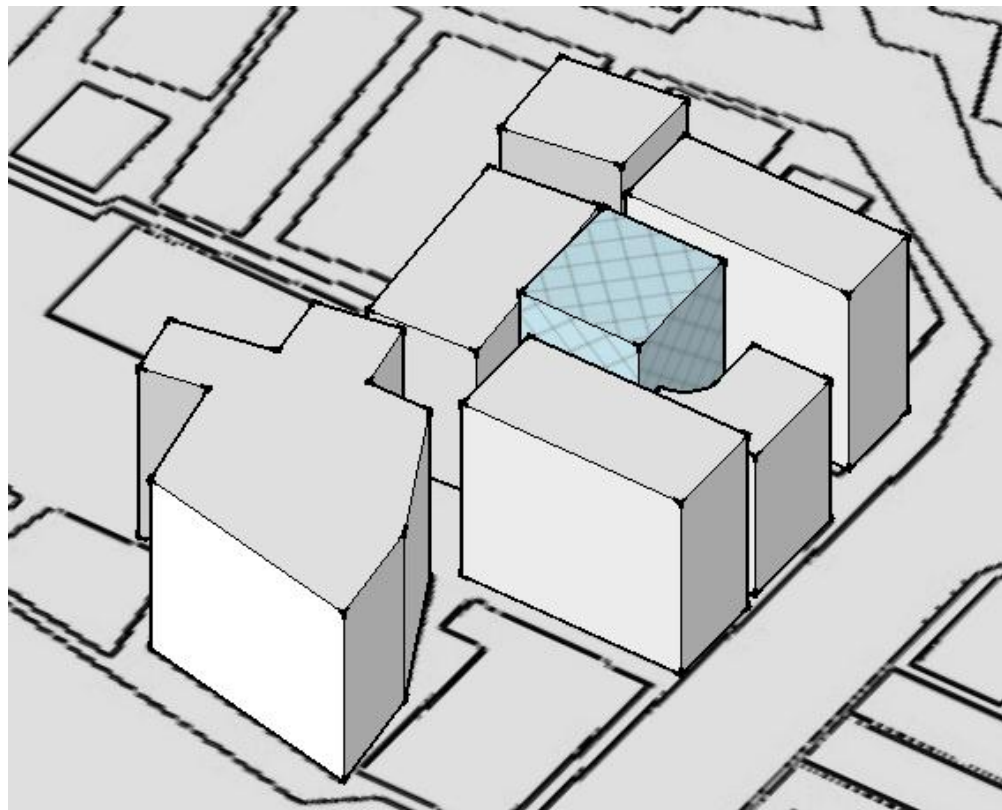


空地面积约为：**100**平方米

除去与周围房屋的间距及进车空间，建筑
实际可用的面积仅为：**50**平方米



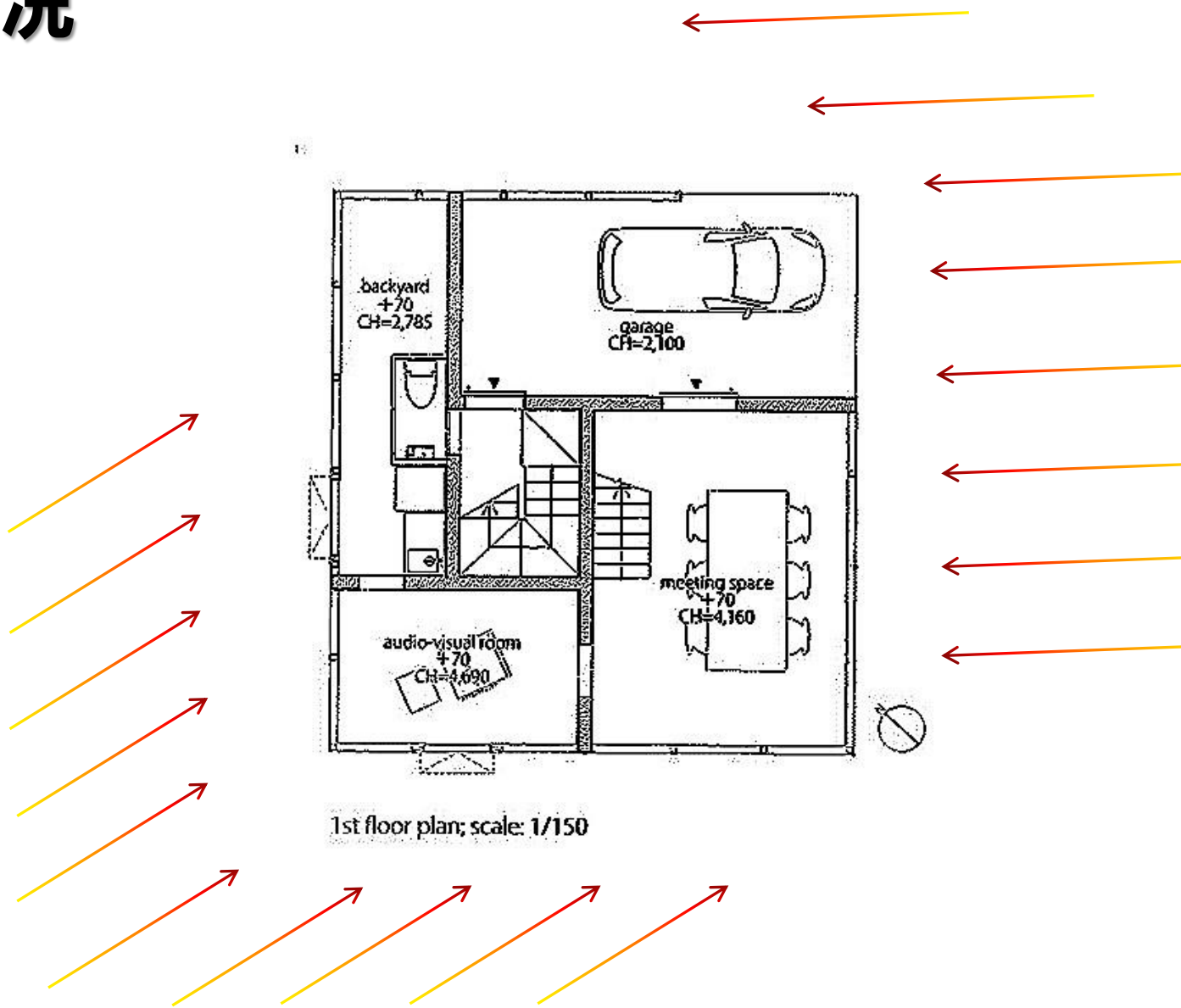
由平面上的方形向上拉伸，
得到一个长方形的体块，使
基地上的空间得到最大限度的
使用。



光照情况

早晨

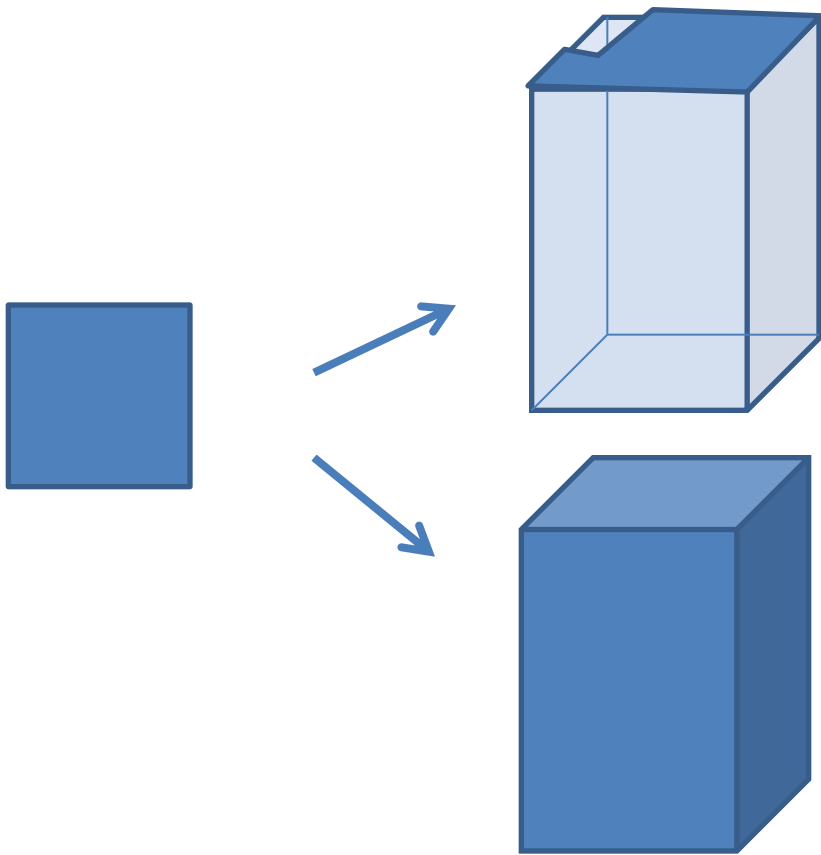
傍晚



1st floor plan; scale: 1/150

光照情况

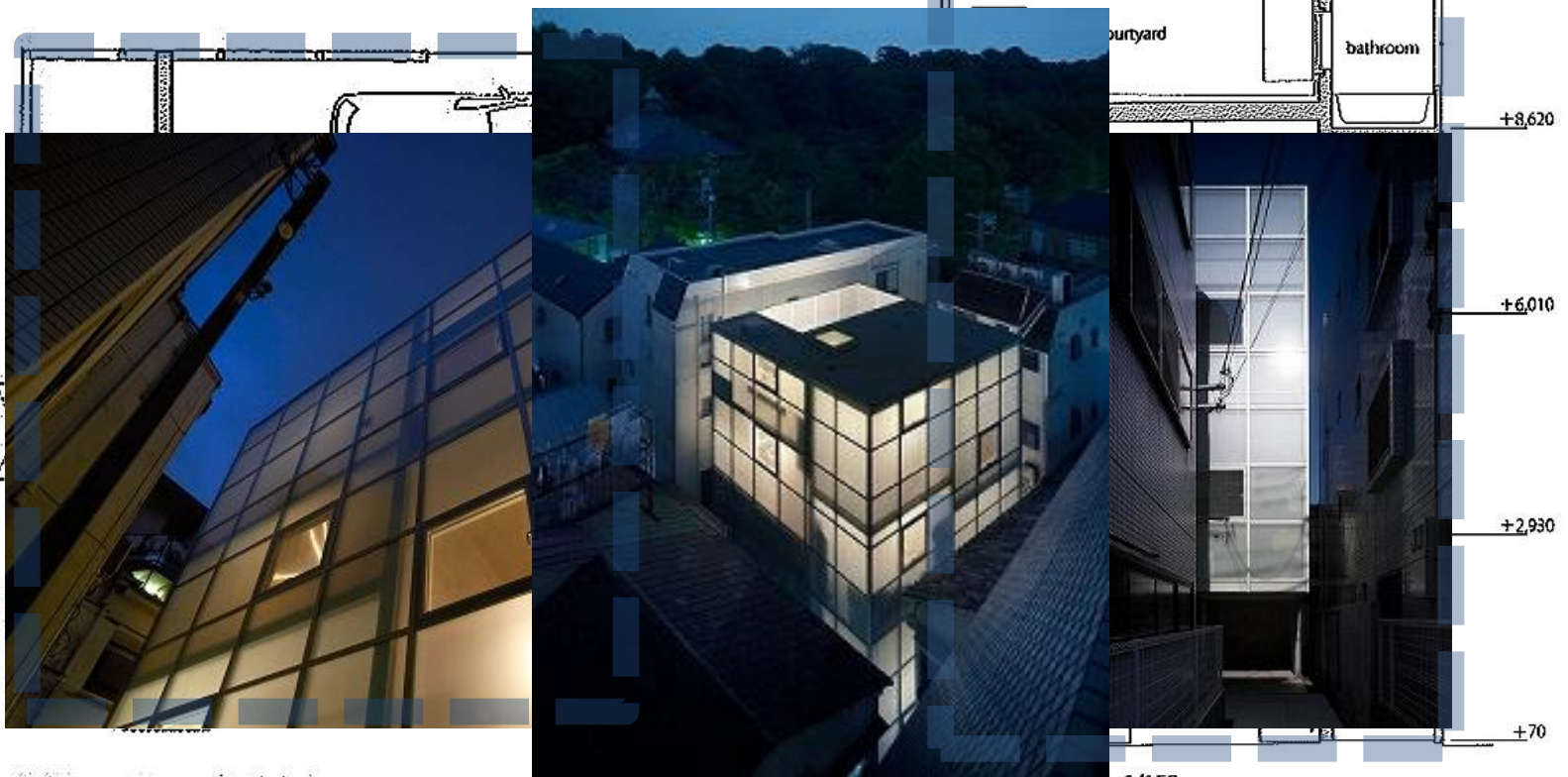




由平面上的方形向上拉伸，
得到一个长方形的体块，使基地上的空间
得到最大限度的使用。

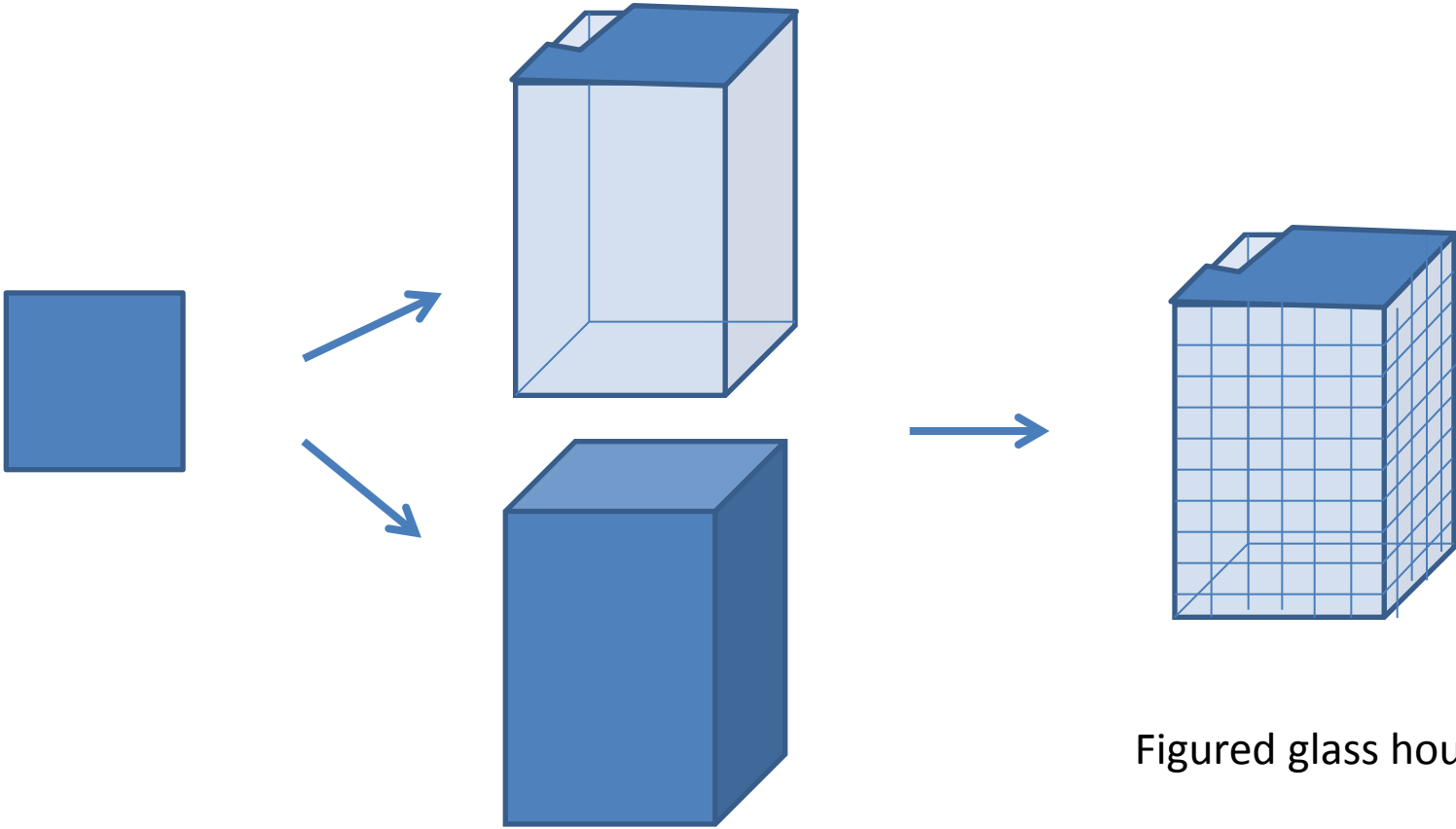
建筑四周以磨砂玻璃围和，在引入更多
光线的同时，也一定程度上保护了业主
的私密性。

1. 四周使用磨砂玻璃围和；
2. 在Courtyard顶部再次使用玻璃以便引入更多光线；



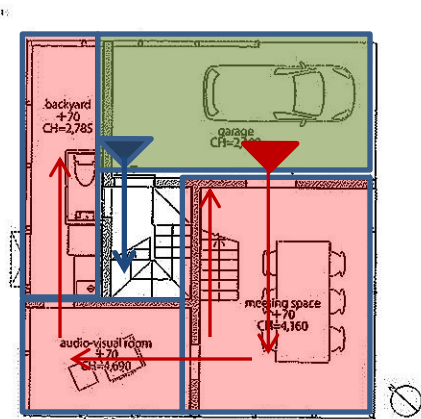
1st floor plan; scale: 1/150

D-D section; scale: 1/150

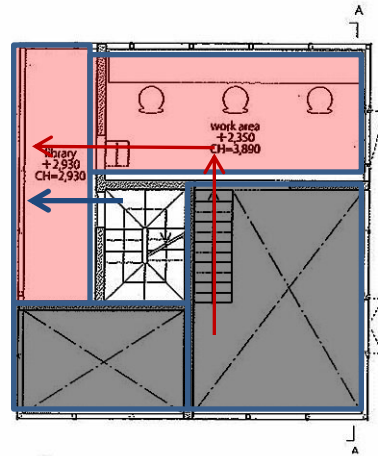


Figured glass house

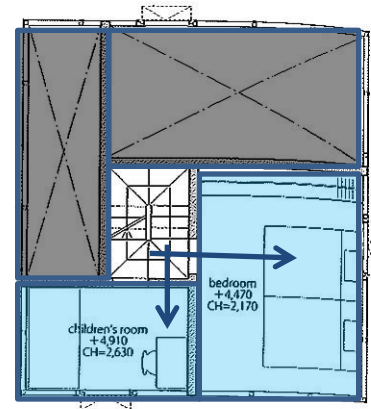
办公与居住功能有机共存



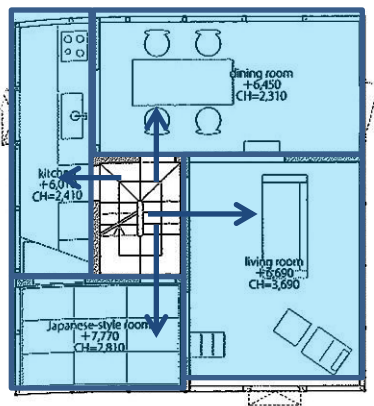
1st floor plan; scale: 1/150



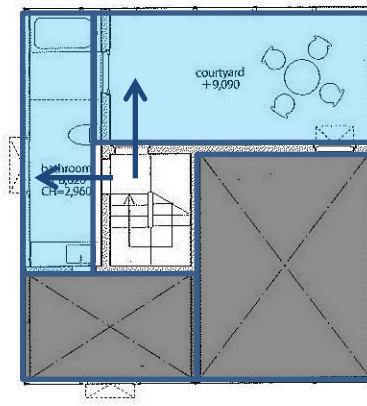
2nd floor plan(lower); scale: 1/150



2nd floor plan(upper); scale: 1/150



3rd floor plan (lower); scale: 1/150



3rd floor plan (upper); scale: 1/150

- 建筑入口
- 居住空间
- 办公空间
- 中空空间

North area

1F:Backyard
2F(l):Library
3F(l):Kitchen
3F(u):Bathroom

East area

1F:Garage 2F(l)Work area
3F(l):Dining room
3F(u):Courtyard

5.1m*2.7m

1.35m*5.1m

1.58m*2.25m

3.3m*4.5m

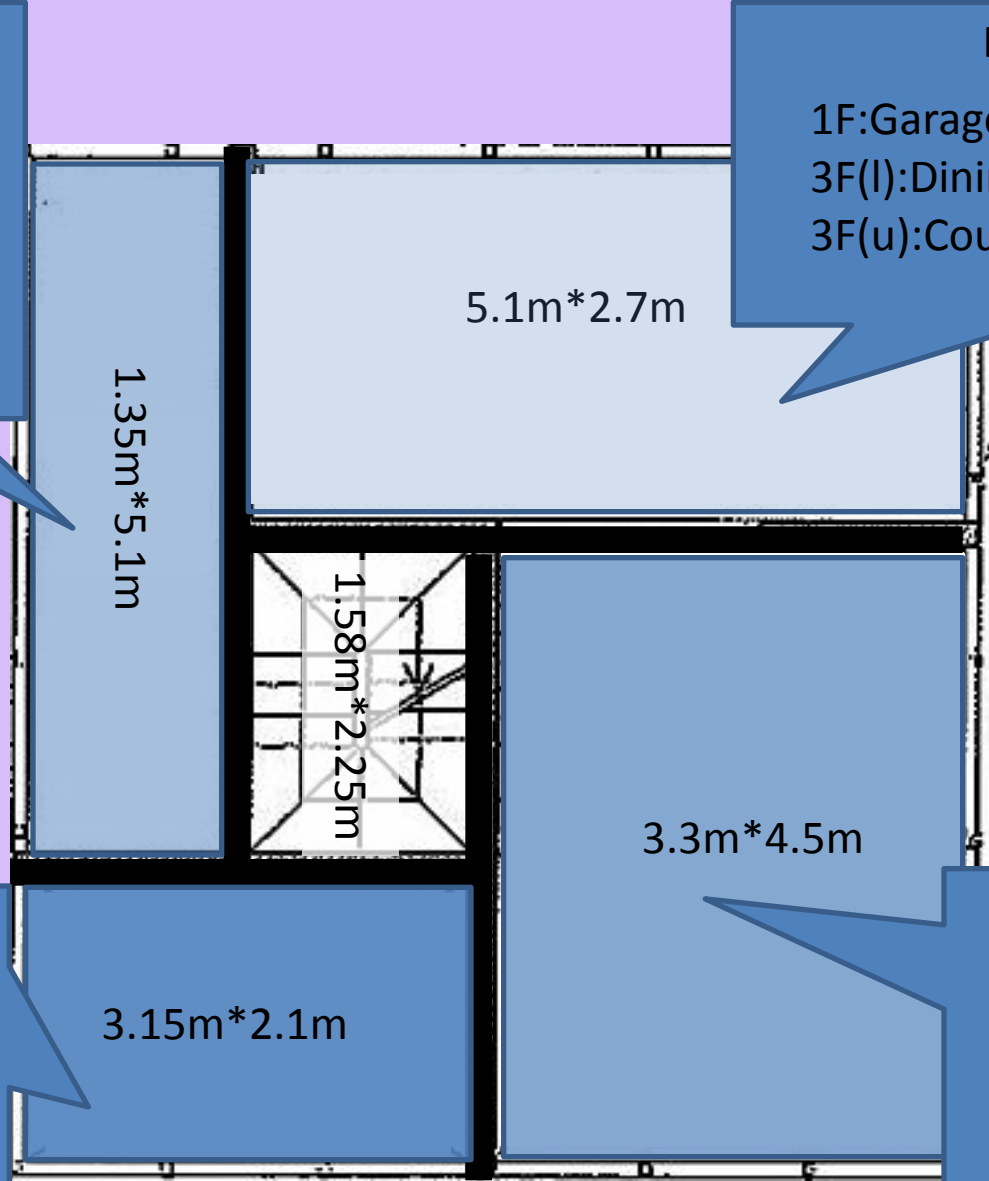
West area

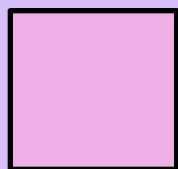
1F:Auto-visual
room
2F(u):Children's
room
3F(l):Japanese
-style room

3.15m*2.1m

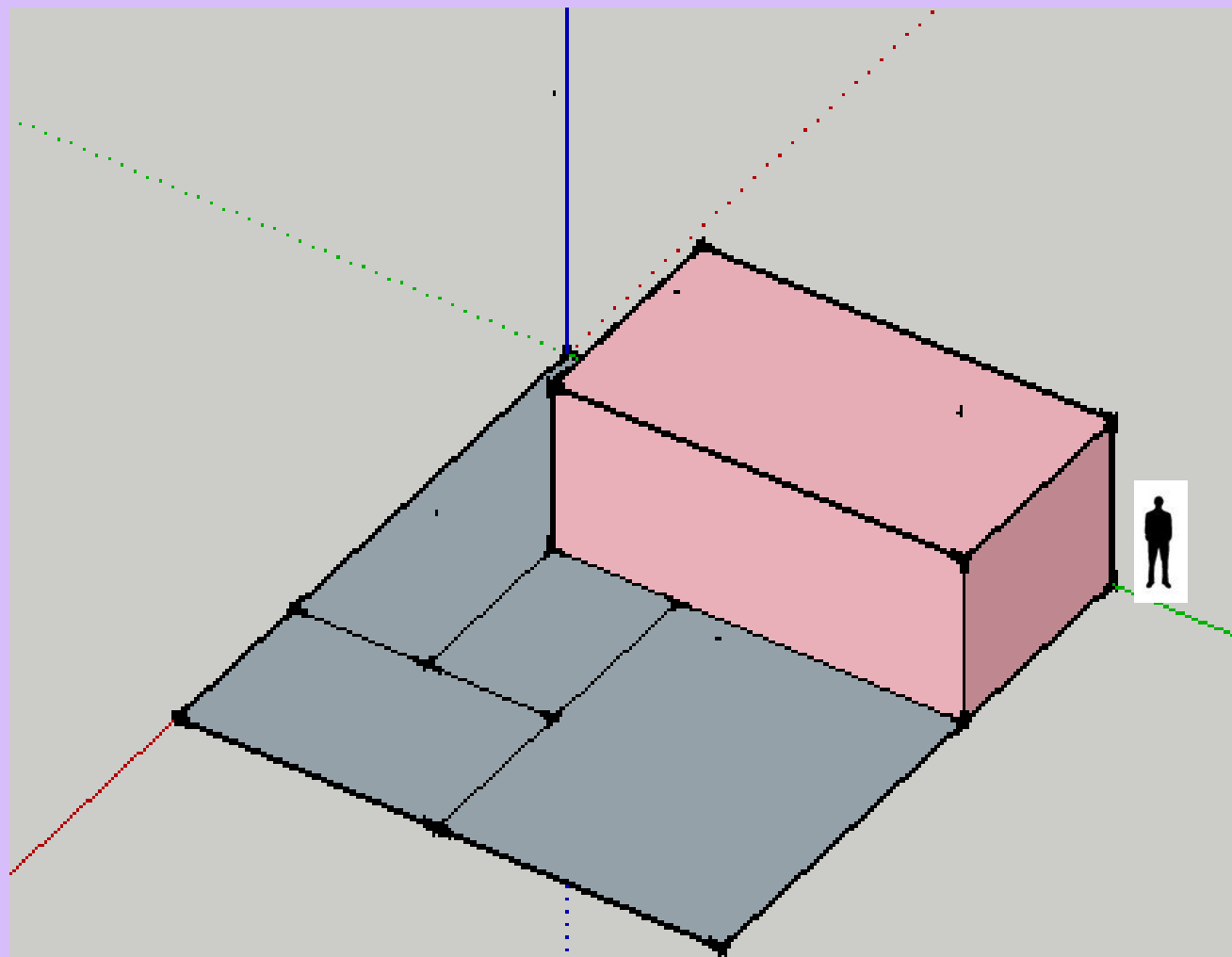
South area

1F:Meeting space
2F(u):Bedroom
3F(l):Living room



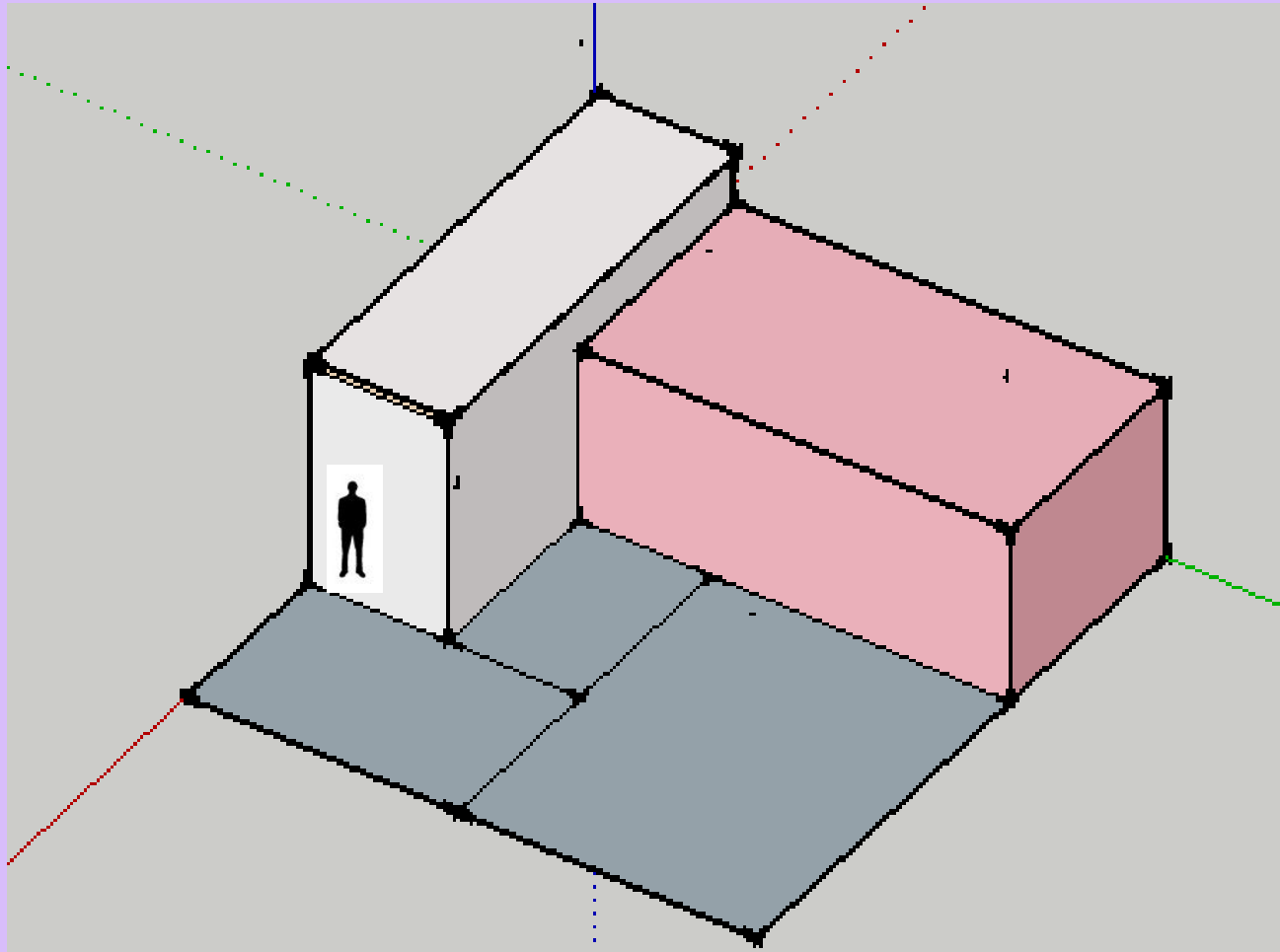


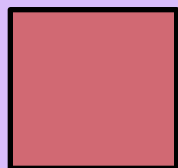
车库 5.25*2.55*2.1m



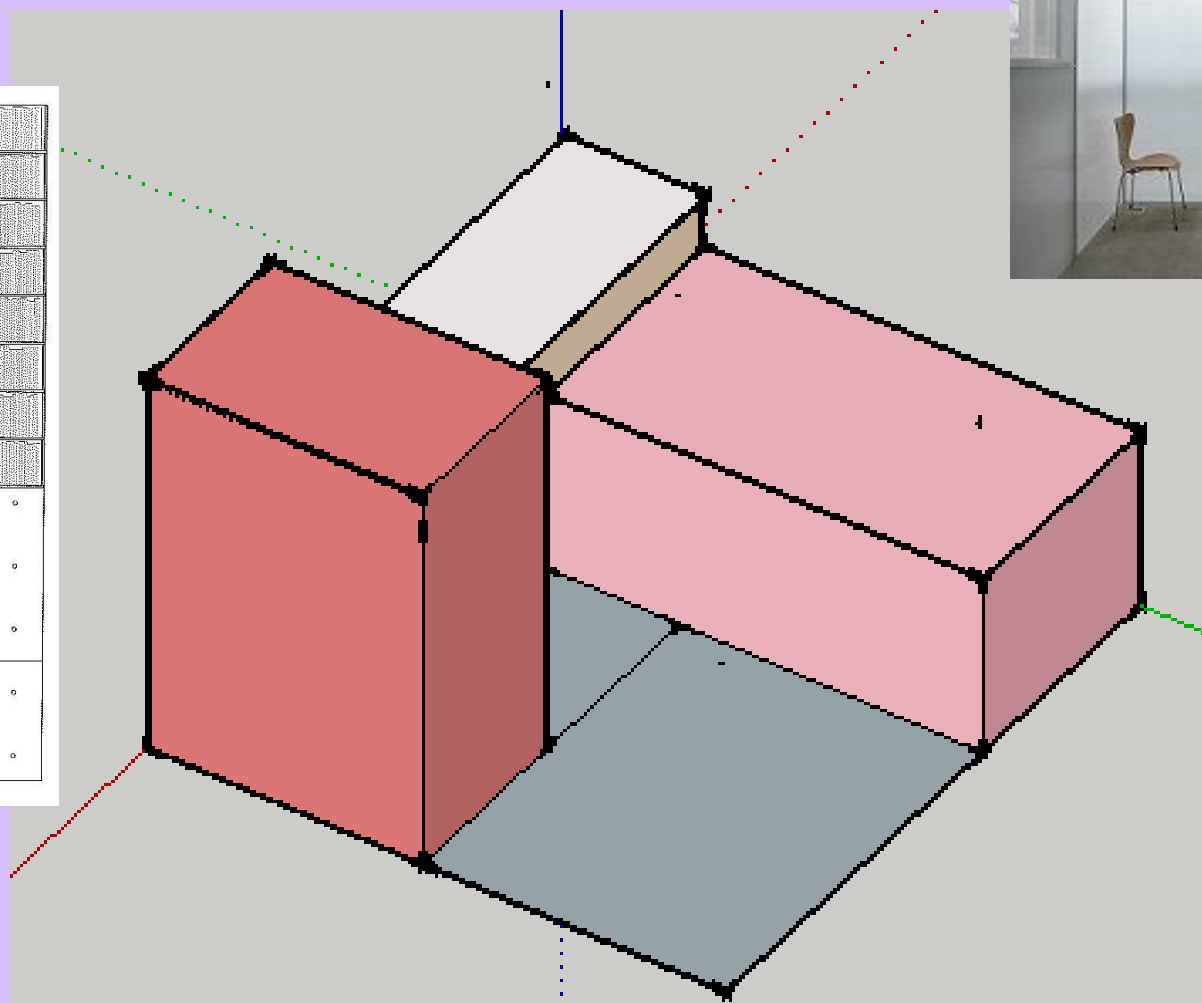
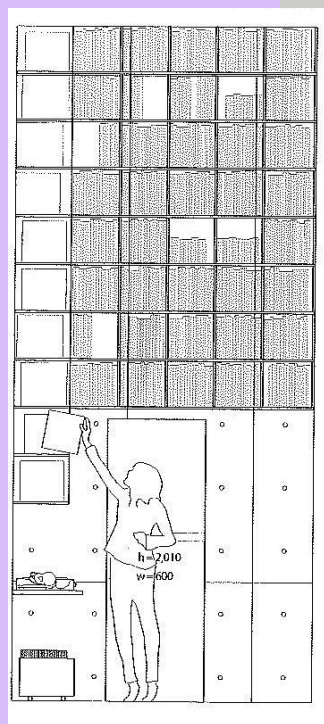


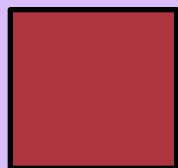
后院 1.35*5.1*2.785m



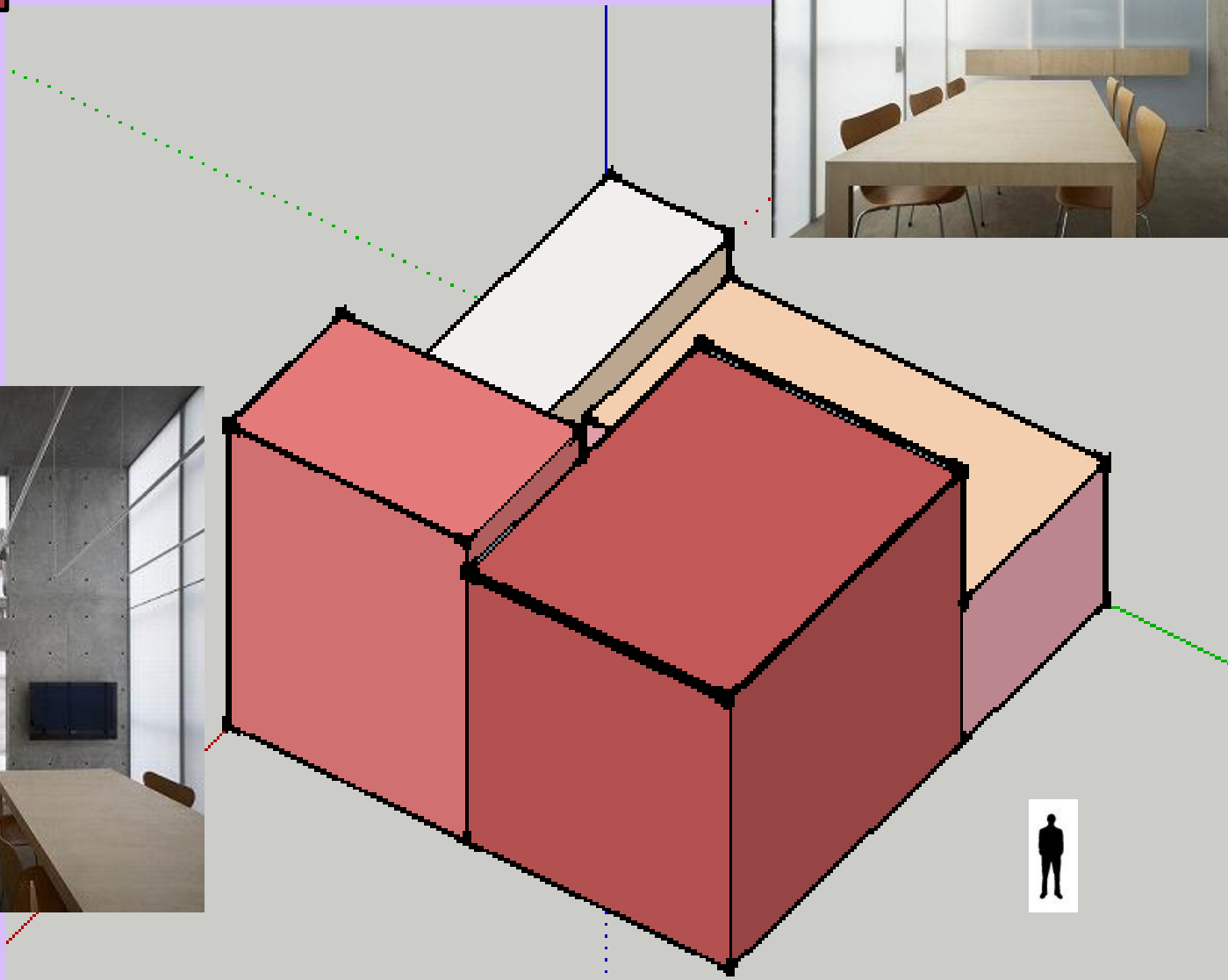


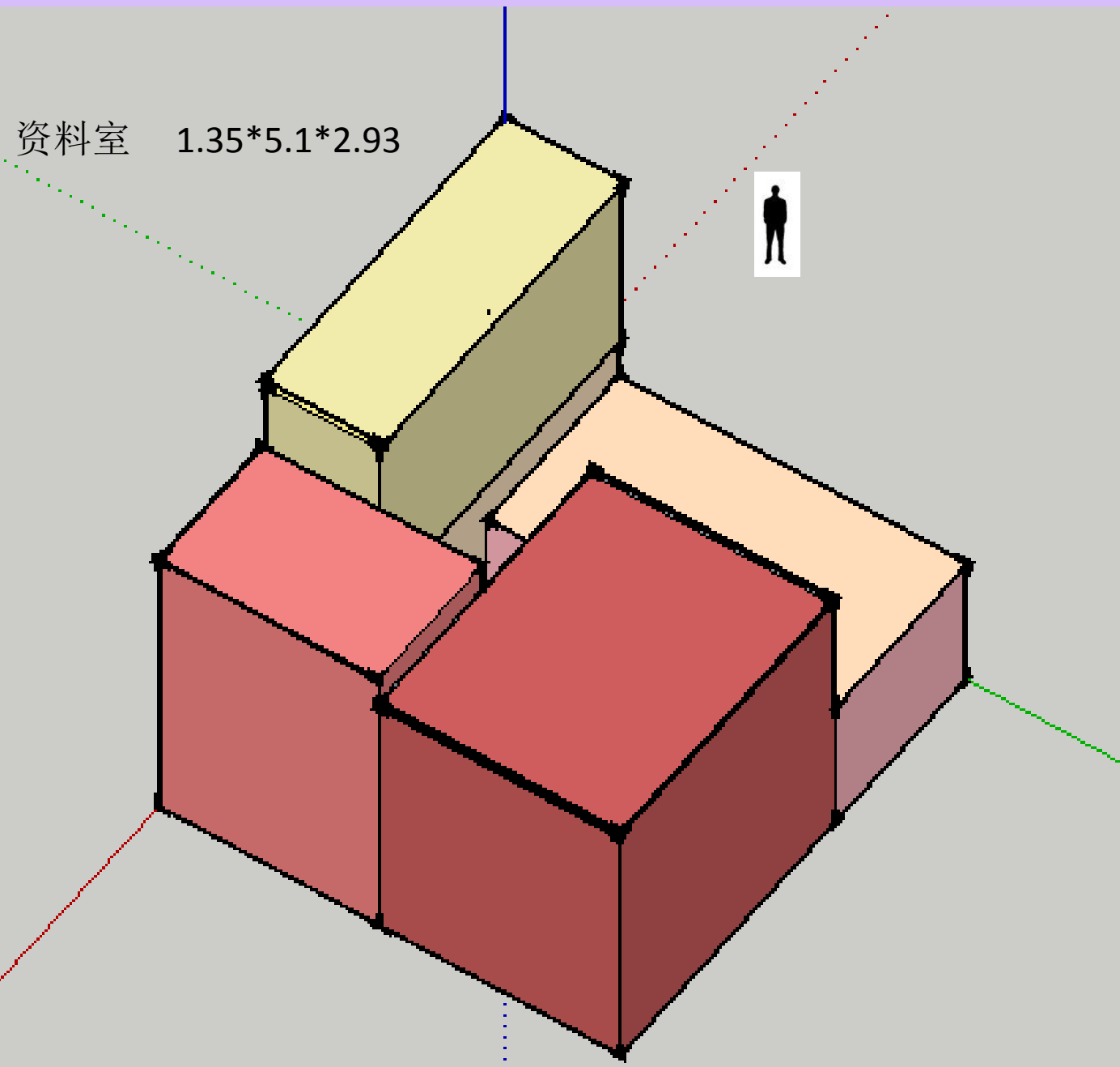
多媒体室 3.15*2.1*4.69m





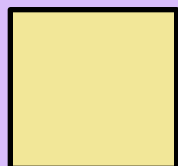
会议室 3.375*4.5*4.16m



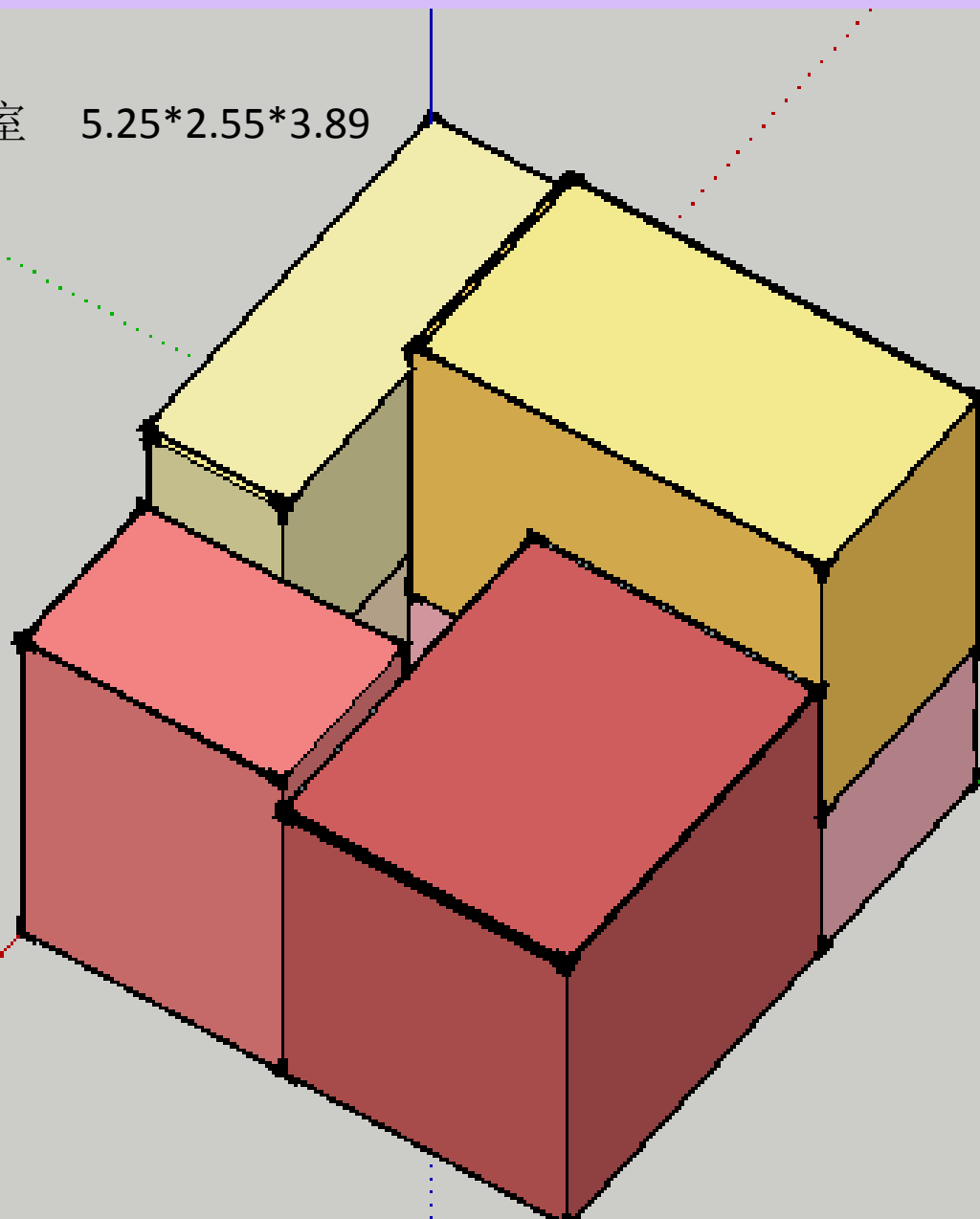


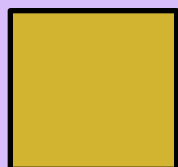
资料室 1.35*5.1*2.93



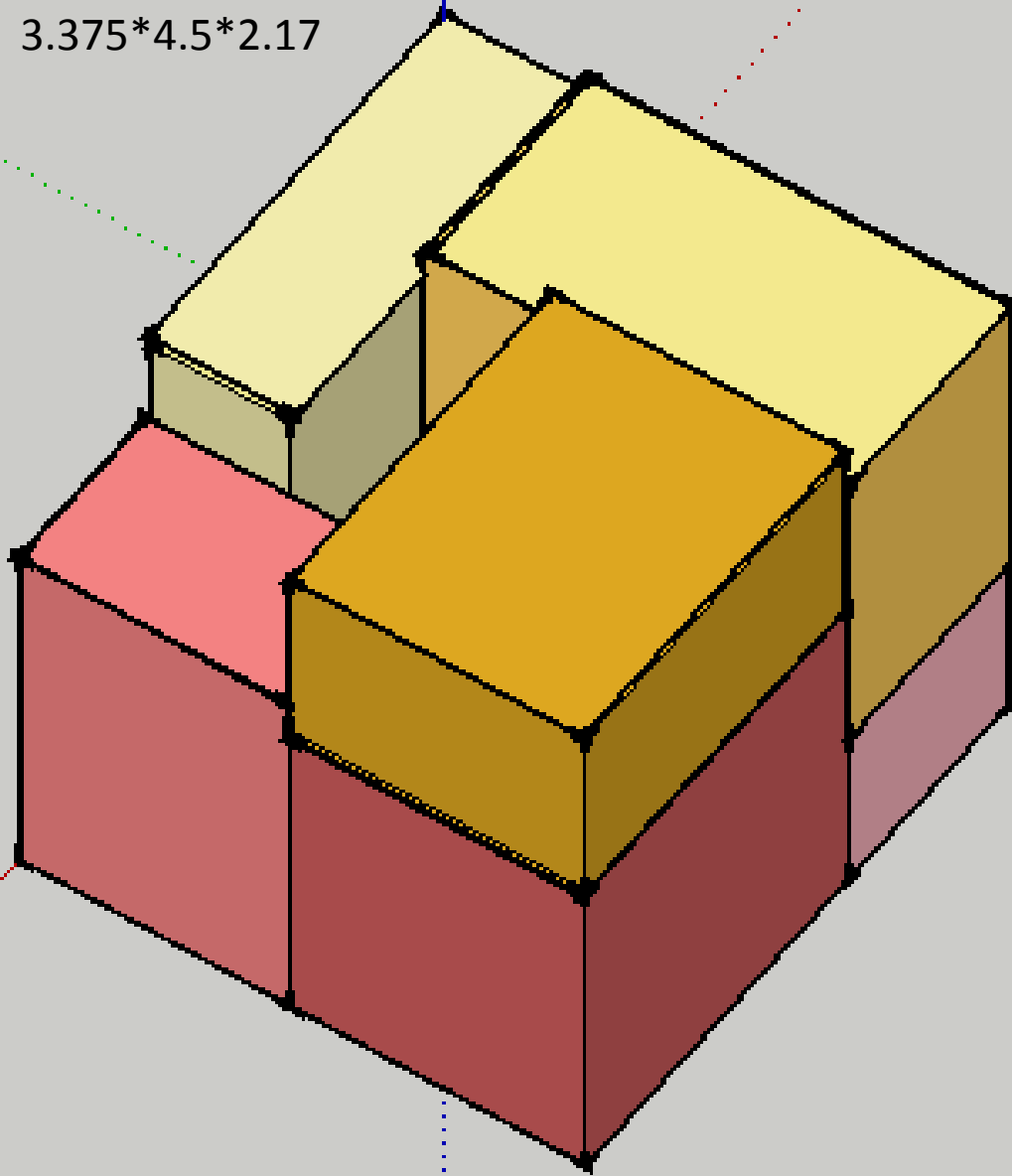


工作室 5.25*2.55*3.89



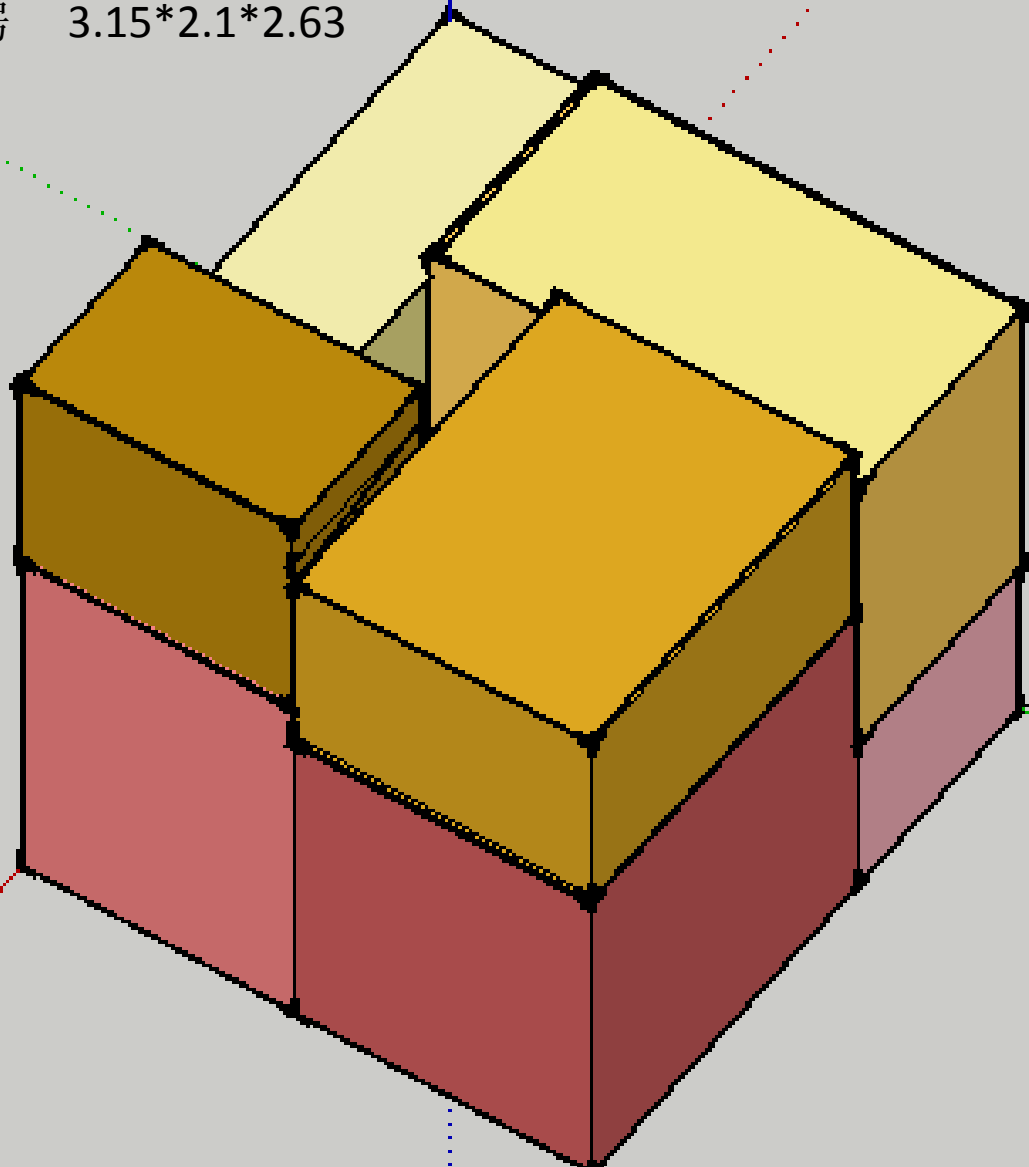


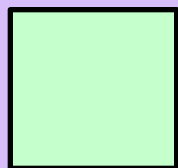
卧室 3.375*4.5*2.17



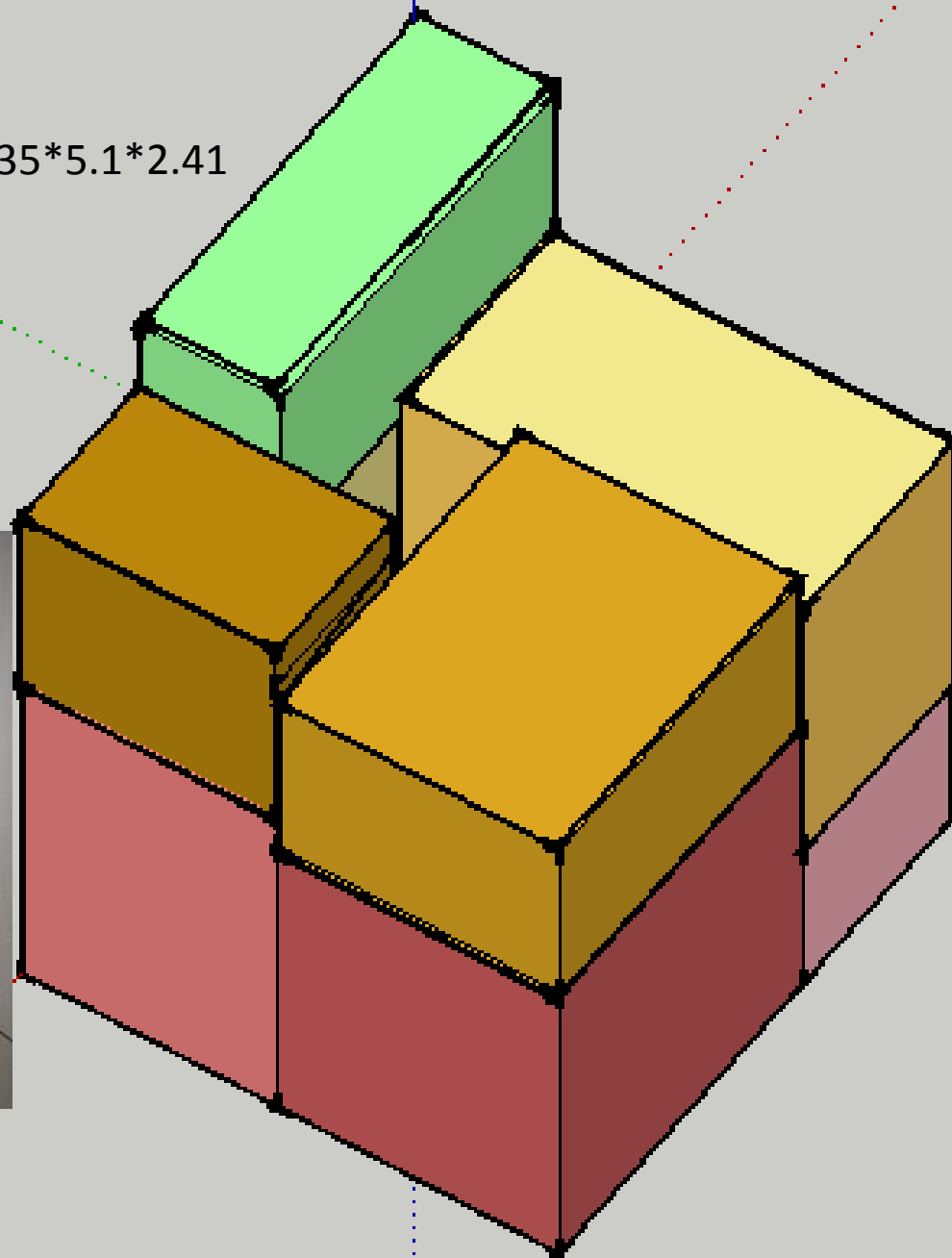


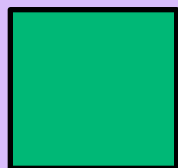
儿童房 3.15*2.1*2.63



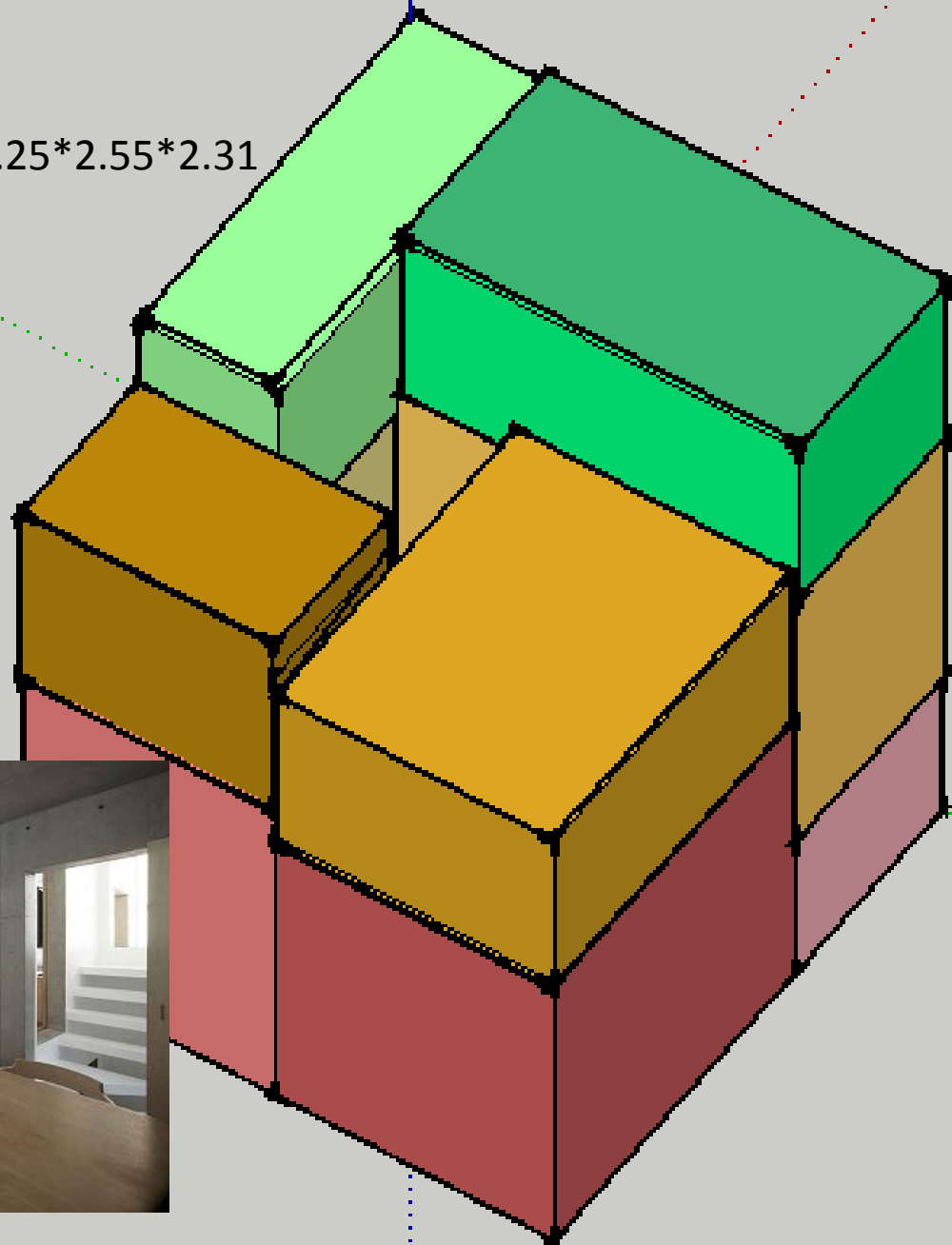


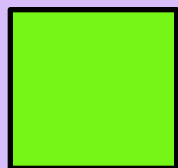
厨房 1.35*5.1*2.41



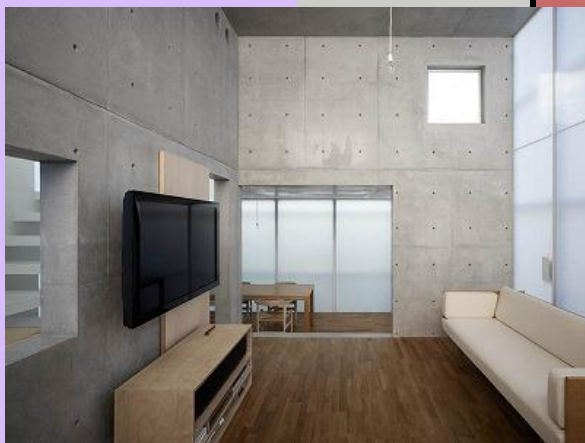
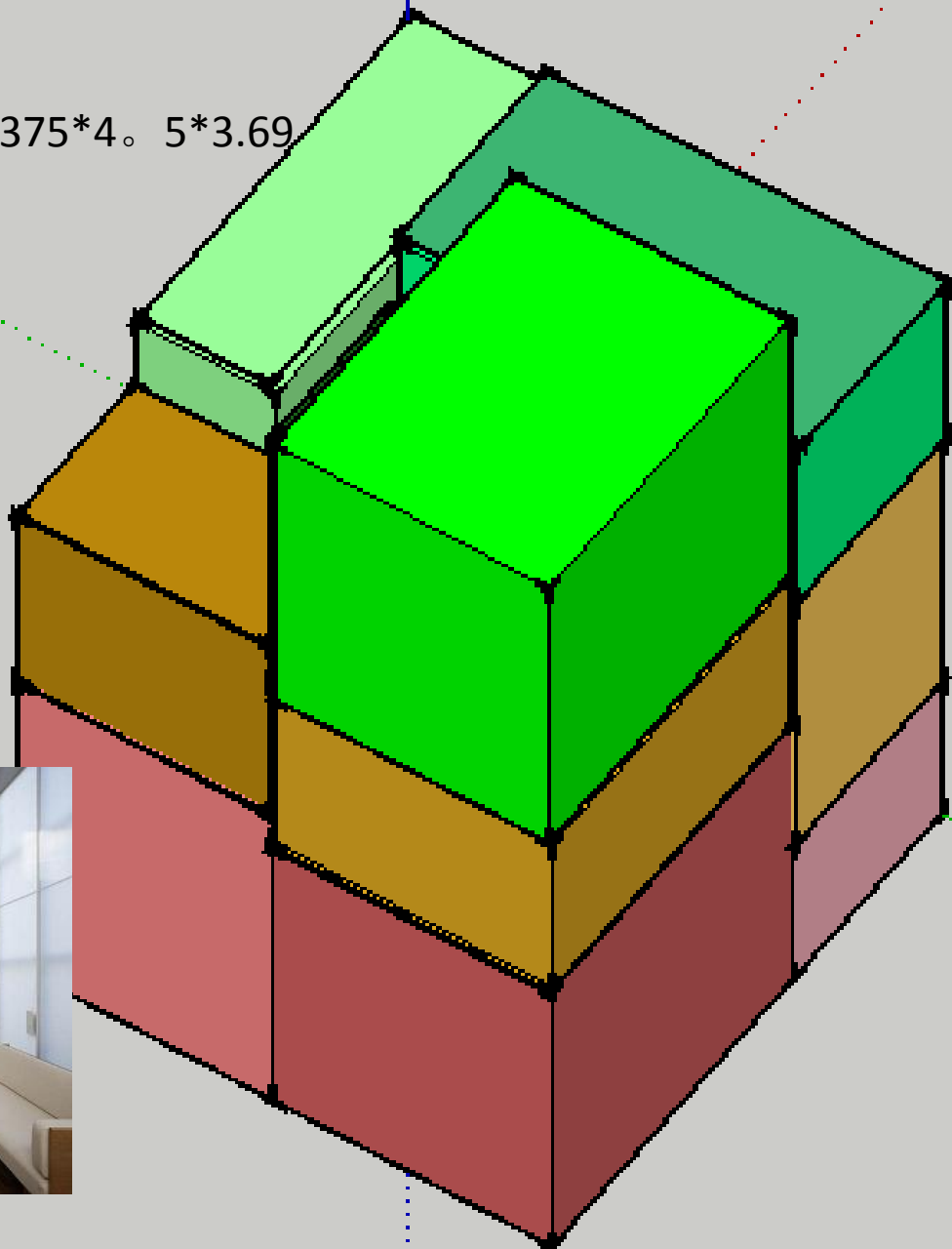


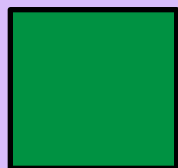
饭厅 5.25*2.55*2.31



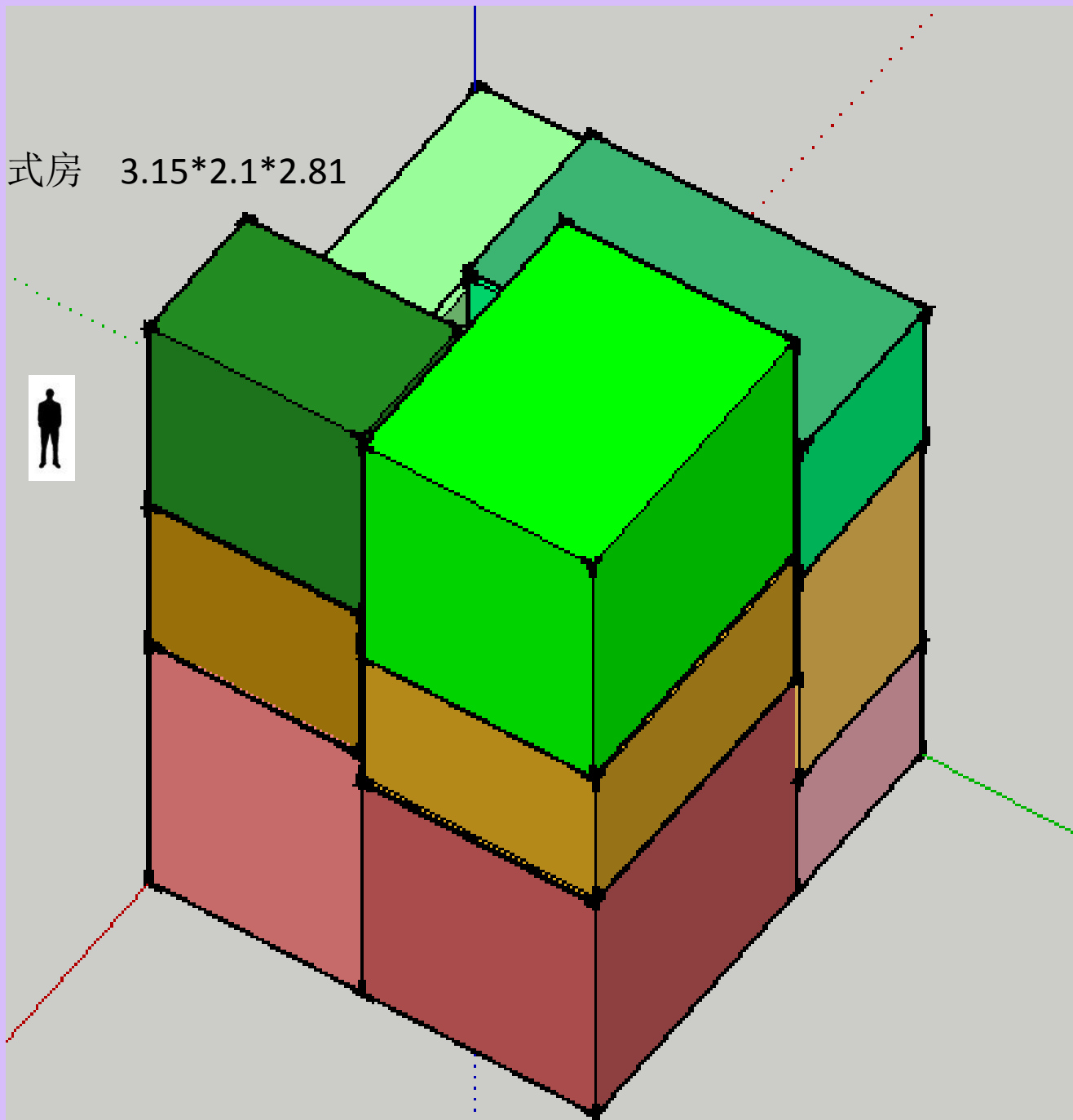


客厅 3.375*4.5*3.69





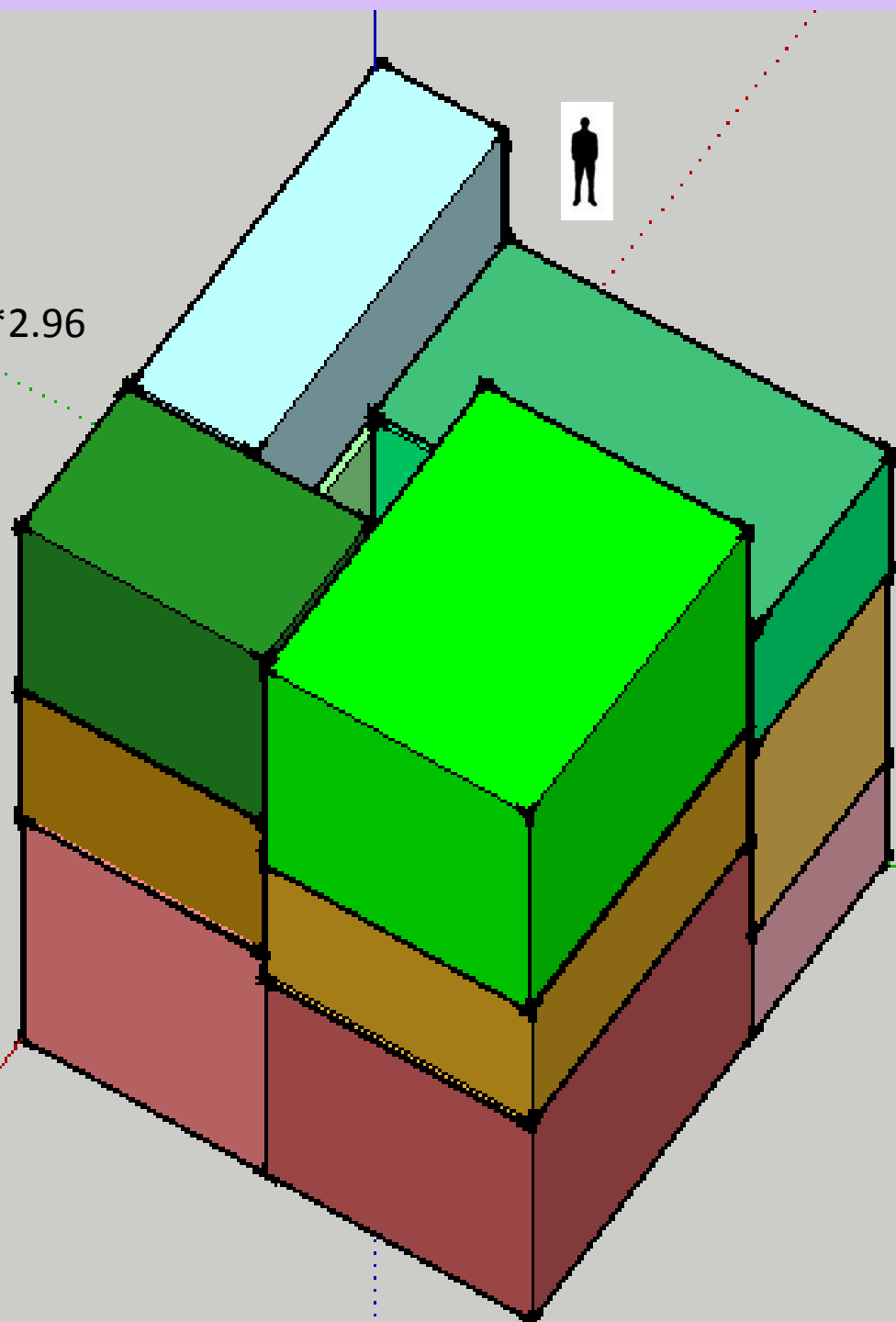
日式房 3.15*2.1*2.81





淋浴间

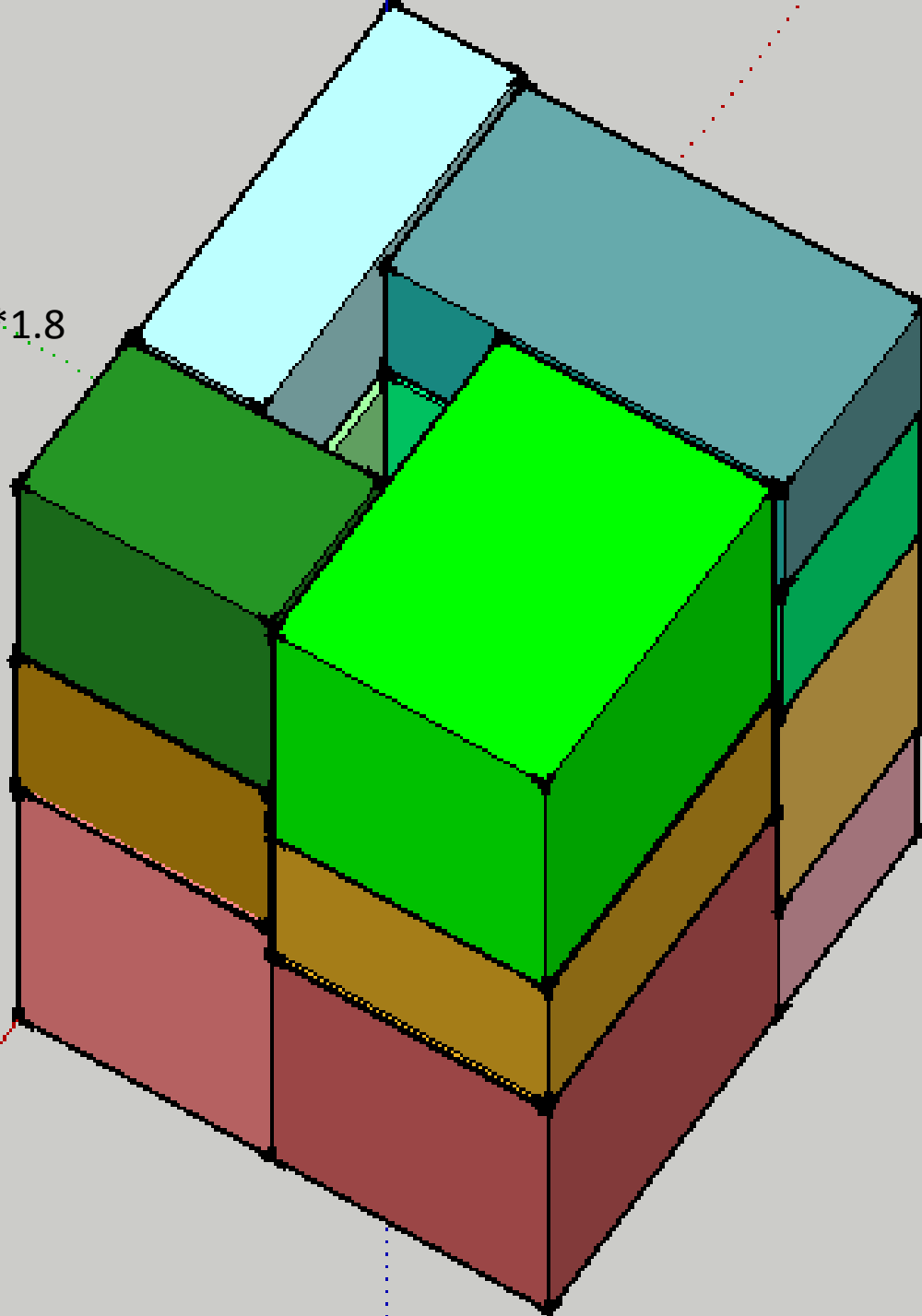
1.35*5.2*2.96

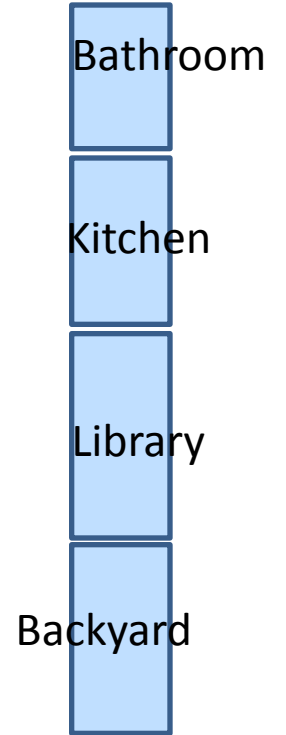
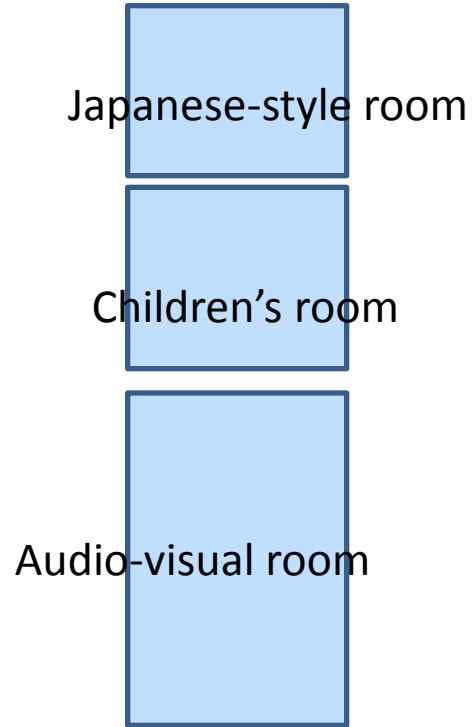
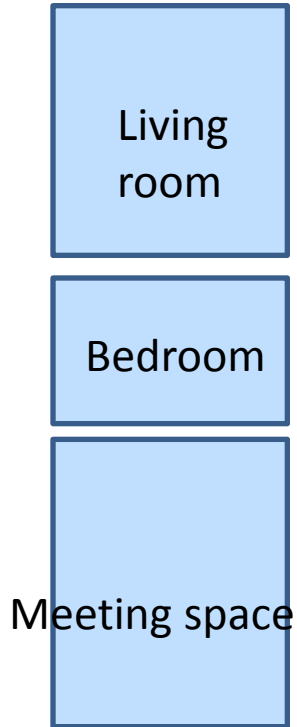
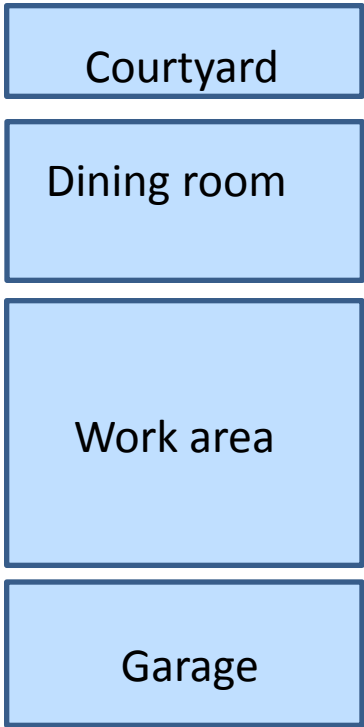


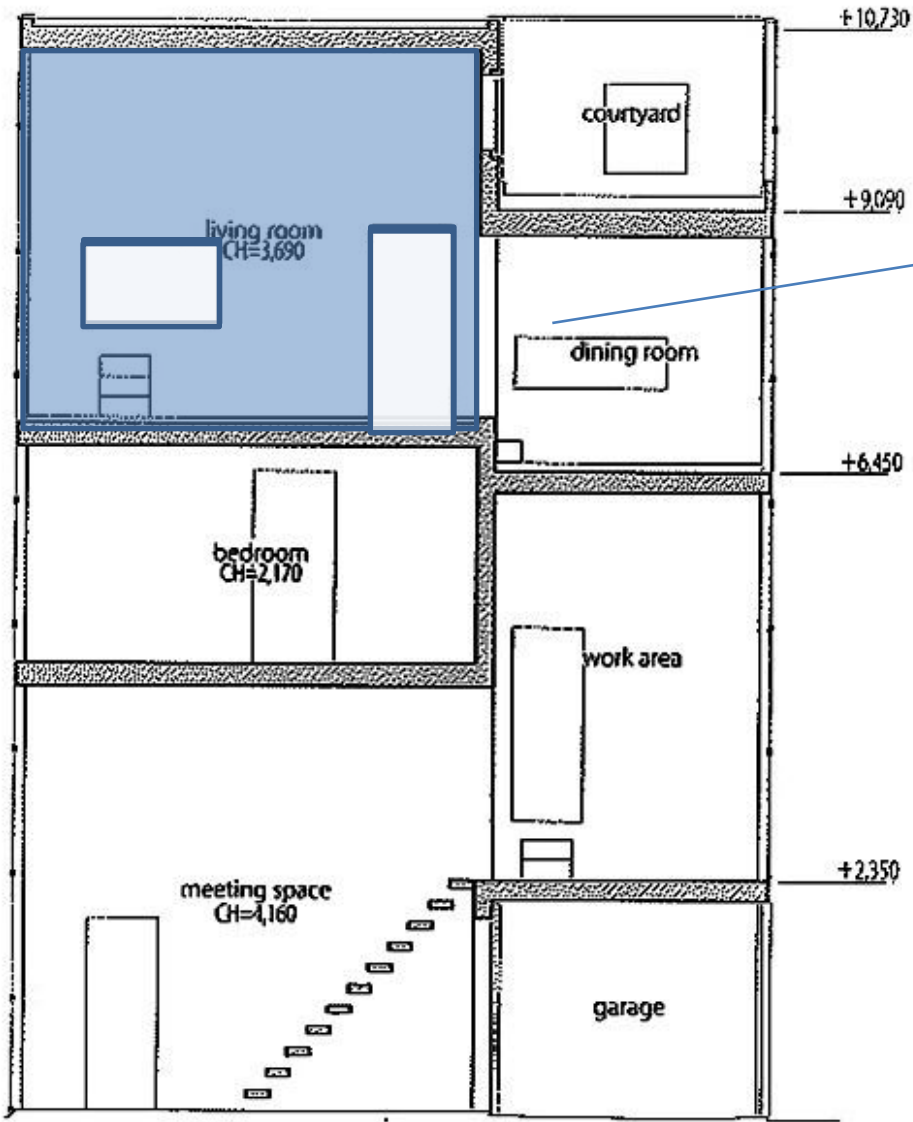


室内阳台

5.25*2.55*1.8





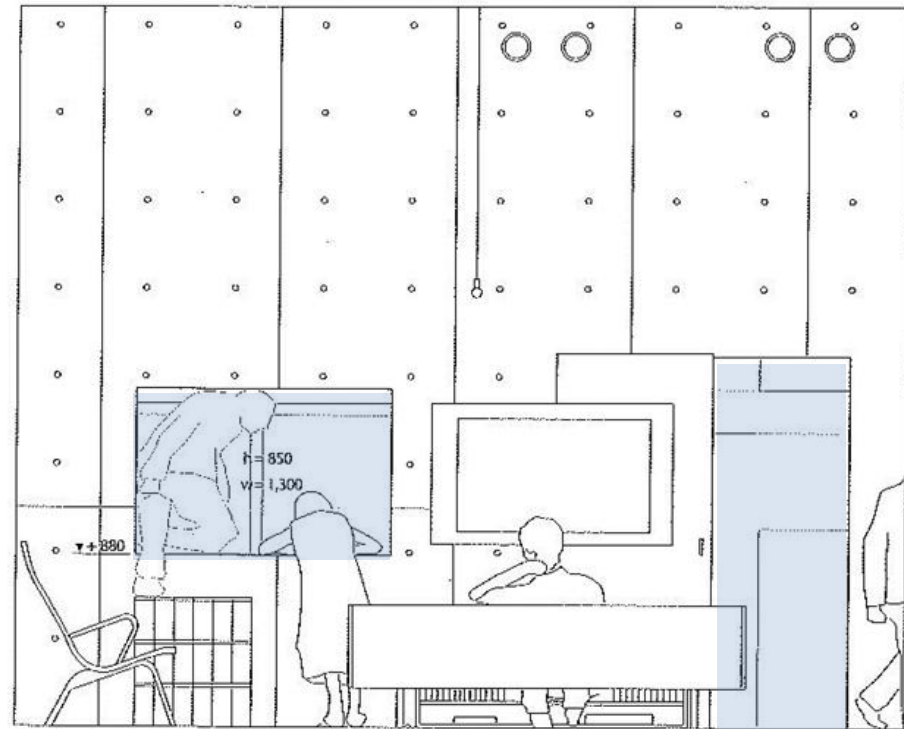


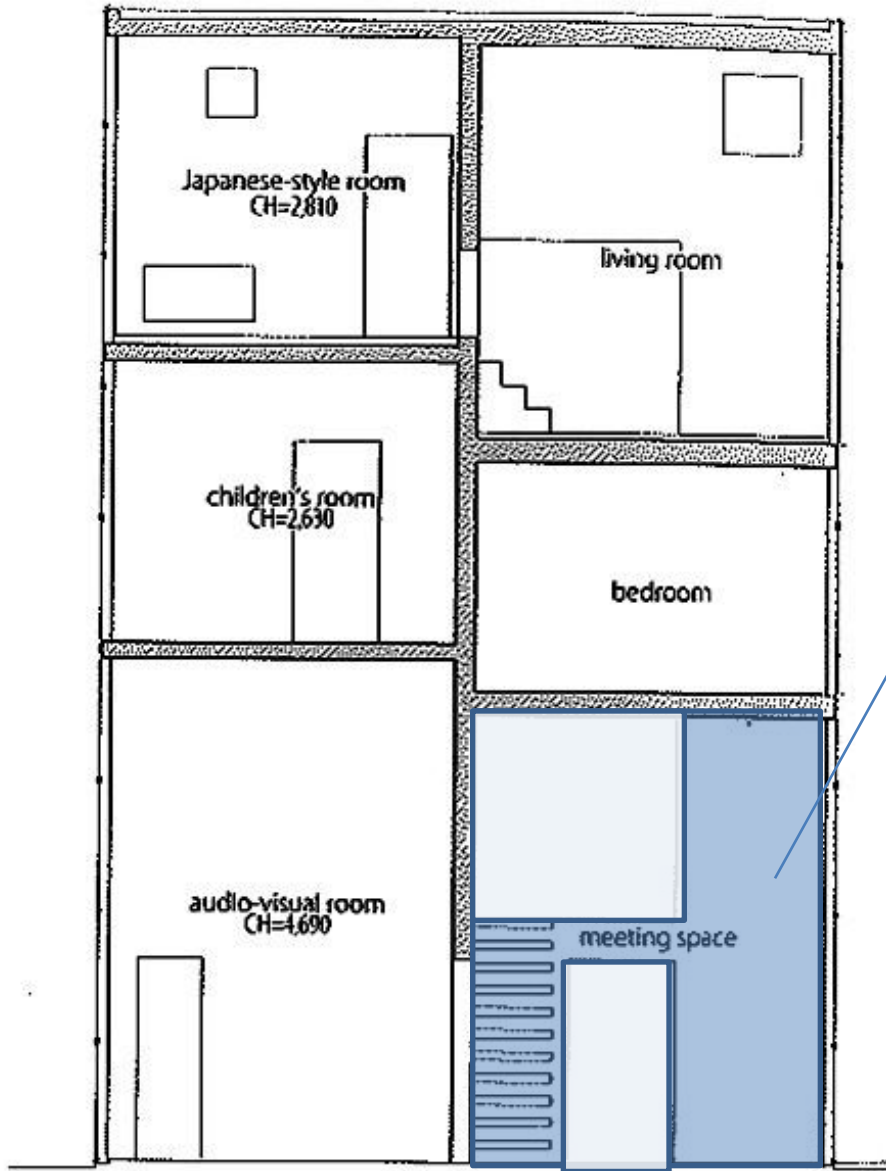
A-A section; scale: 1/150



H = 850
W = 1,300

H = 2,414
W = 867





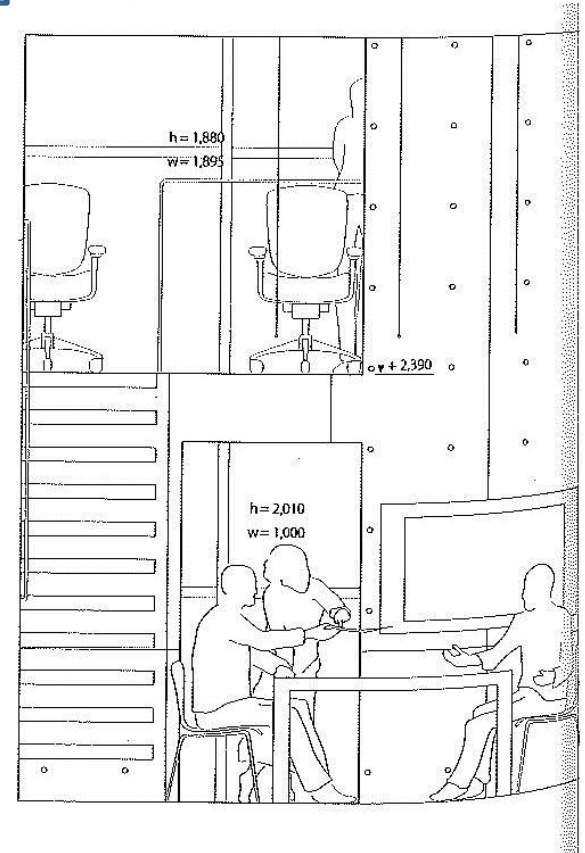
B-B section; scale: 1/150

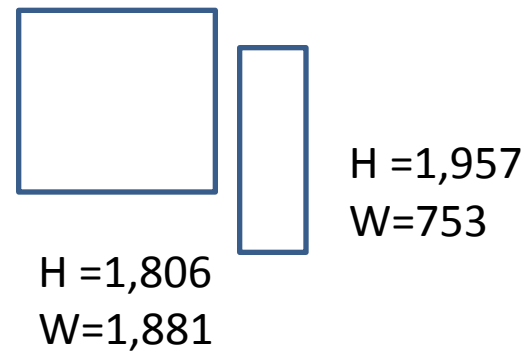
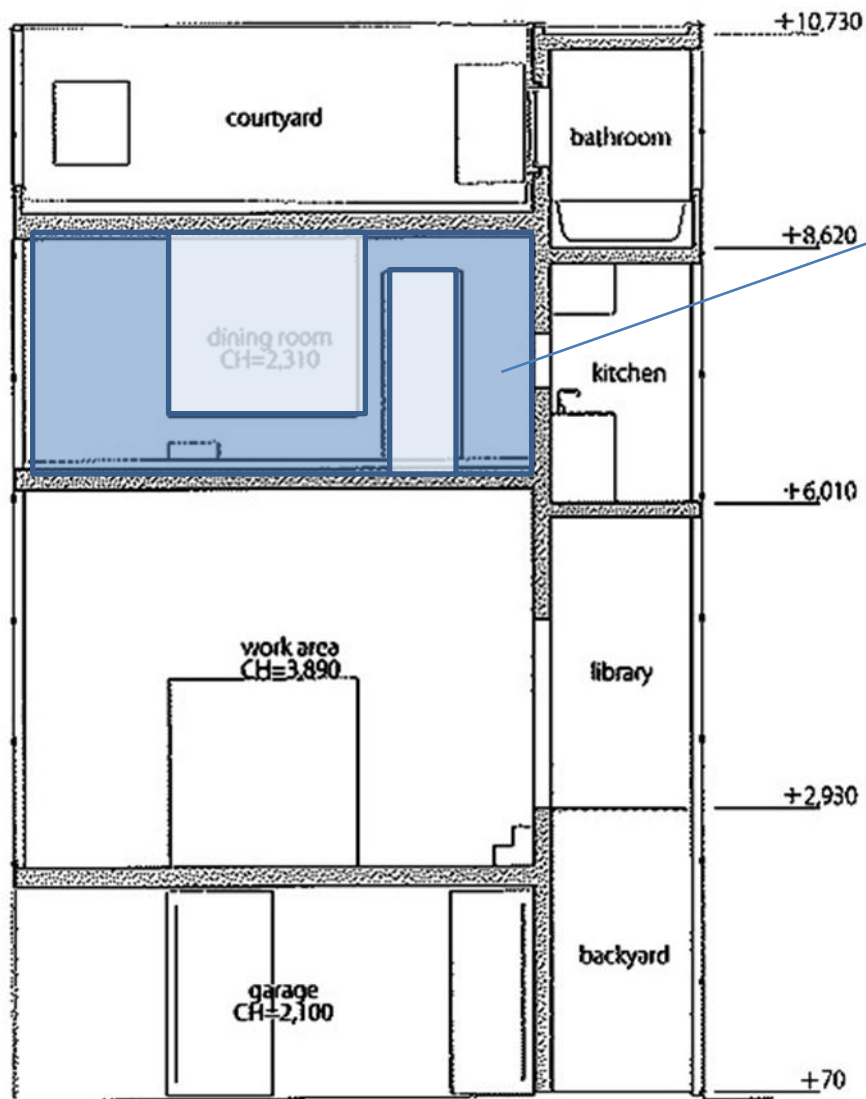


H = 1,880
W = 1,895



H = 2,010
W = 1,000





D-D section; scale: 1/150

小结：

在一个被限制了占地面积以及层高的区域，建筑师出色的完成了一个既能实现办公需求，也能悠闲居住的FIGURED GLASS HOUSE .

谢谢观看

参考文献：JA summer 2009

指导老师：秦丹尼，刘士兴，
曹永康，卢琦。