



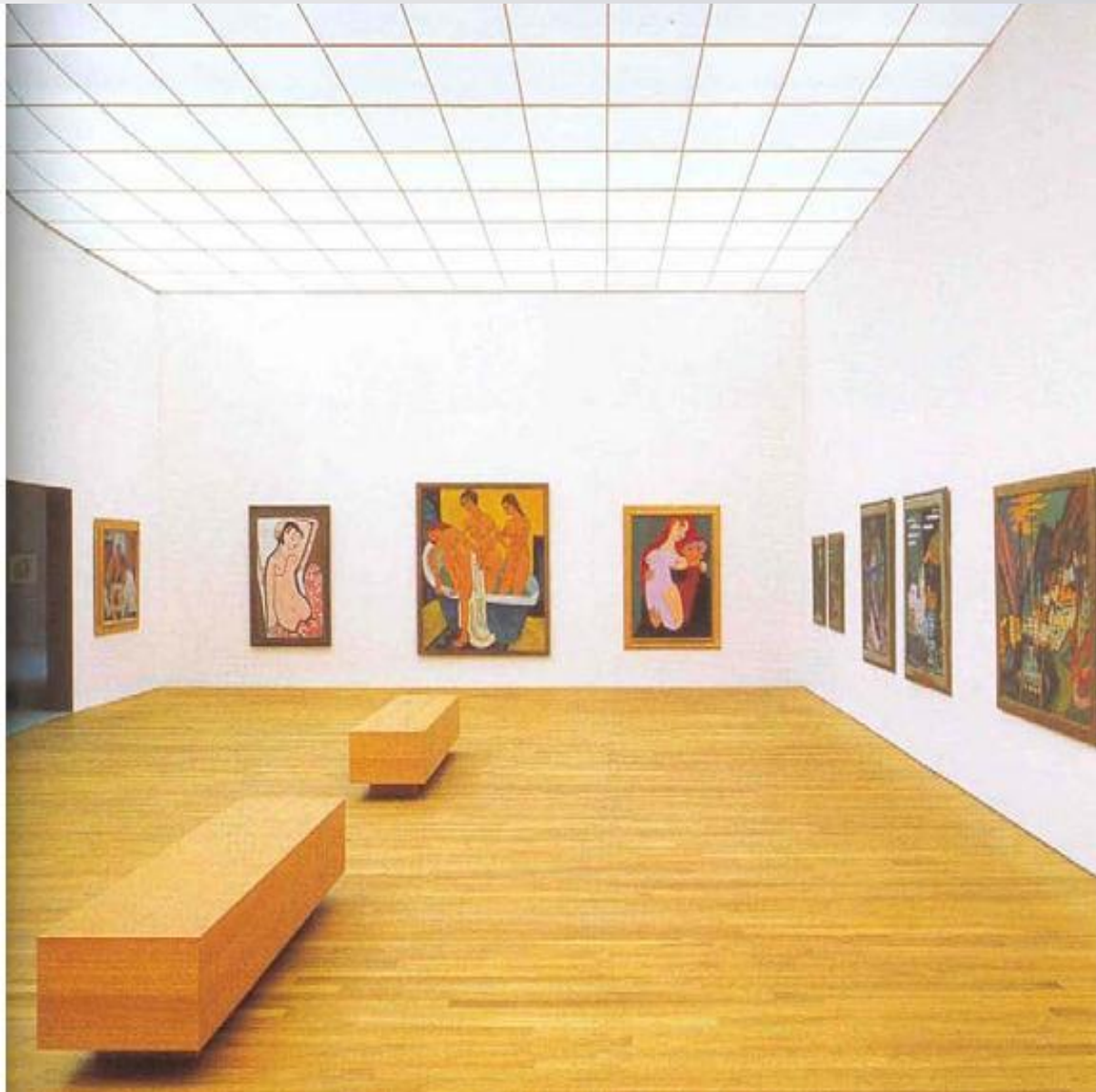
亨策美术馆范例分析 -简单背后的逻辑

建筑师对于艺术品展馆的设计 理念



- 为展品作背景的艺术馆
- 艺术馆应为一个艺术品提供一个展示的空间，这个空间既不应抗衡作品，也不应无谓地将其拔高。



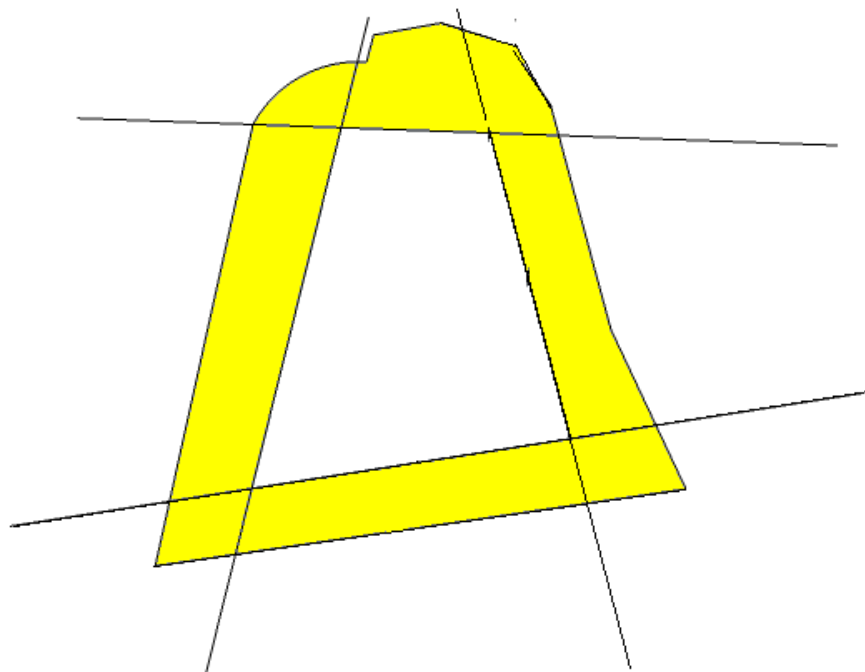




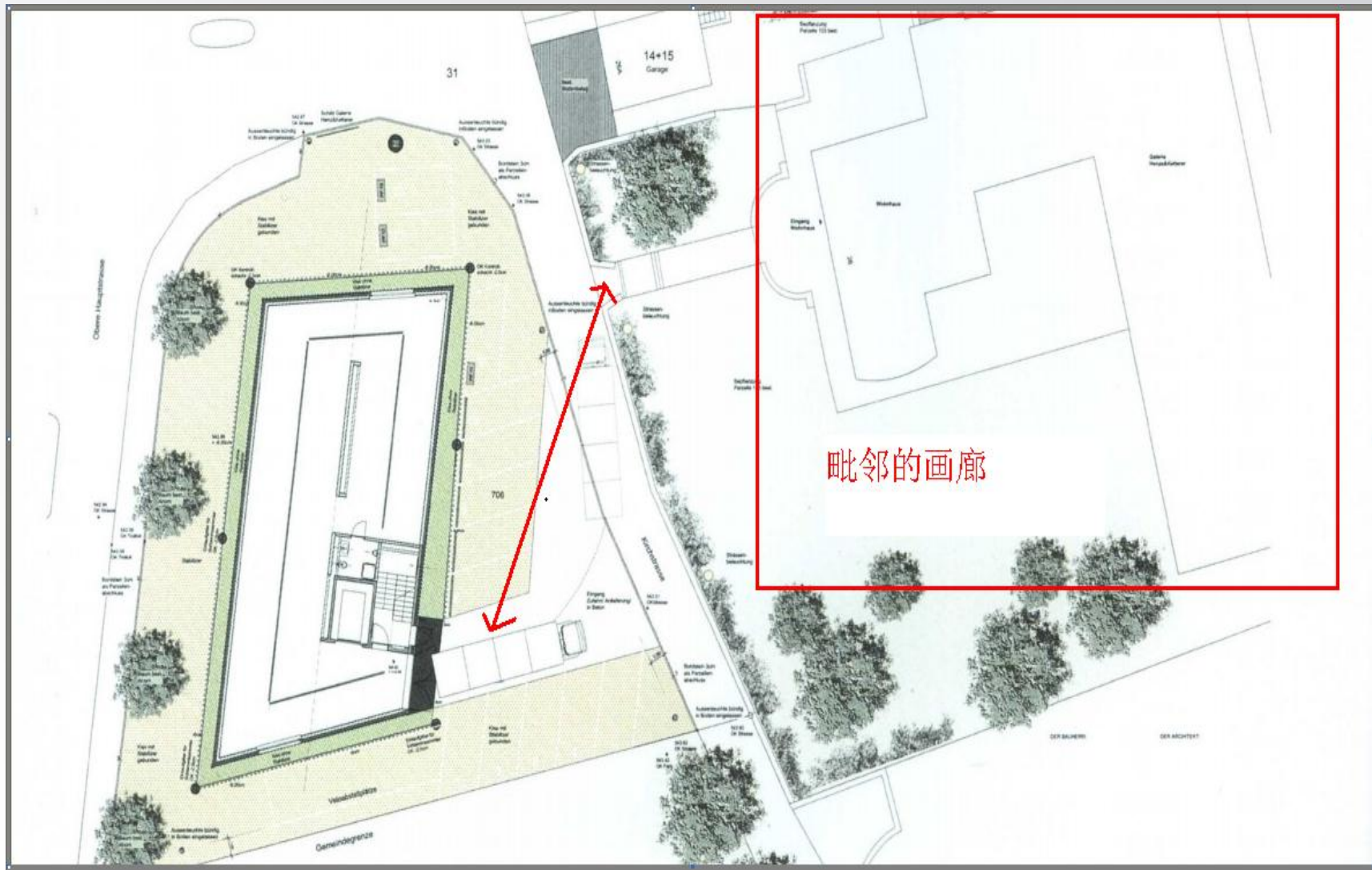


场馆外型的确定

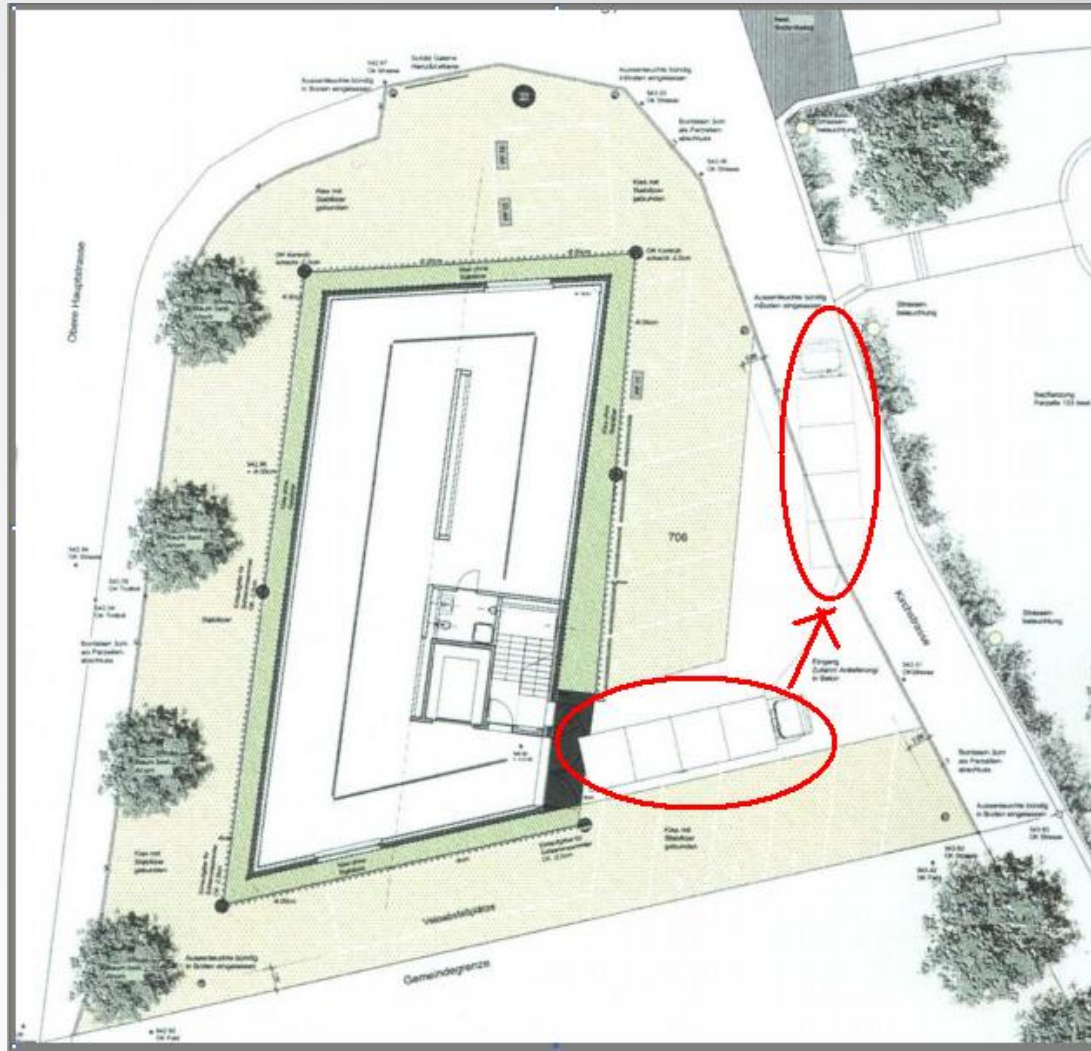
- 甲方要求场地周围有一圈的停车场，建筑师为了场地的最大化利用，建筑边界应尽量与边界平行。



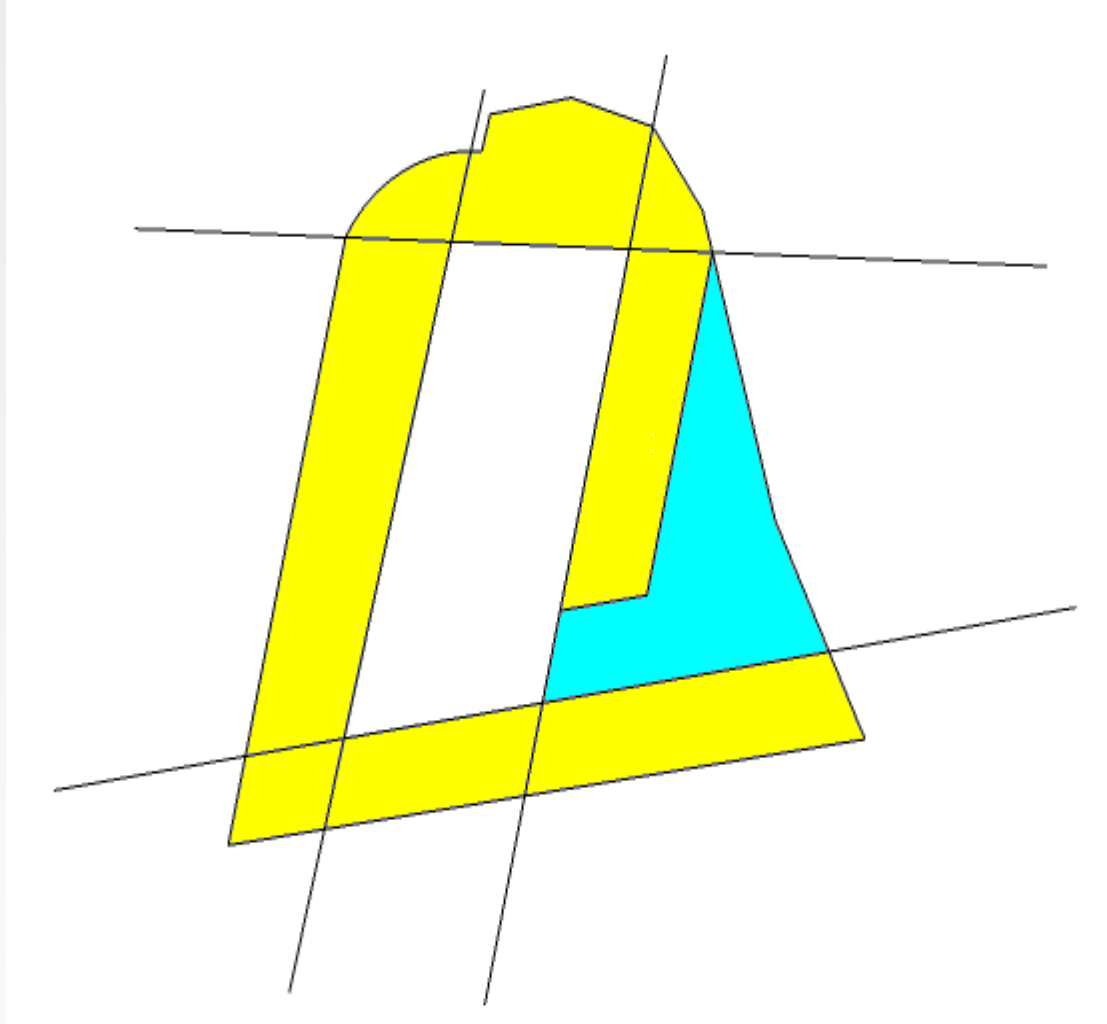
入口的选择



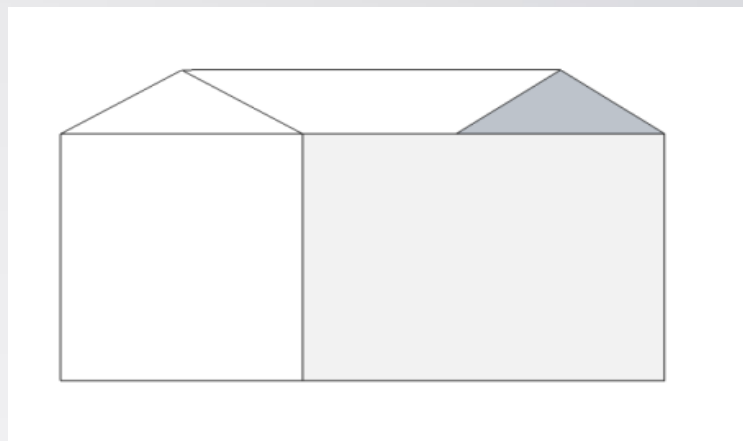
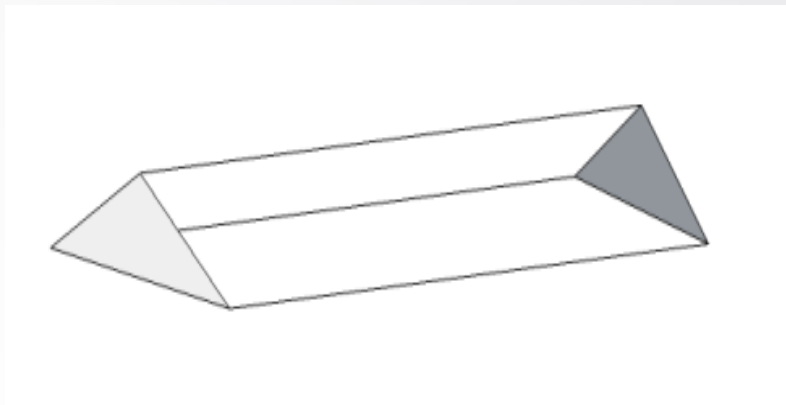
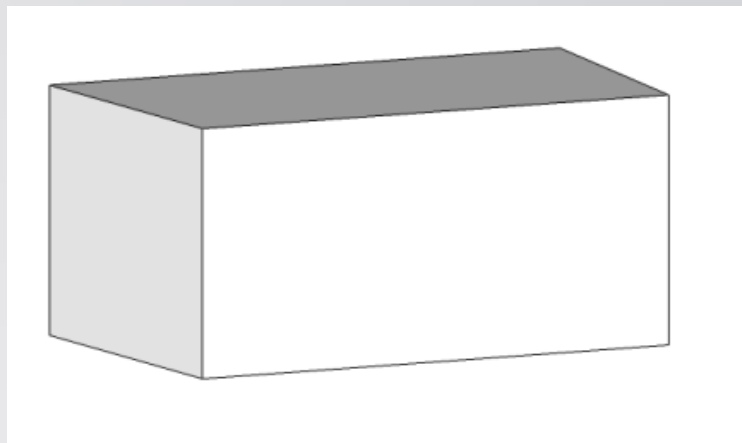
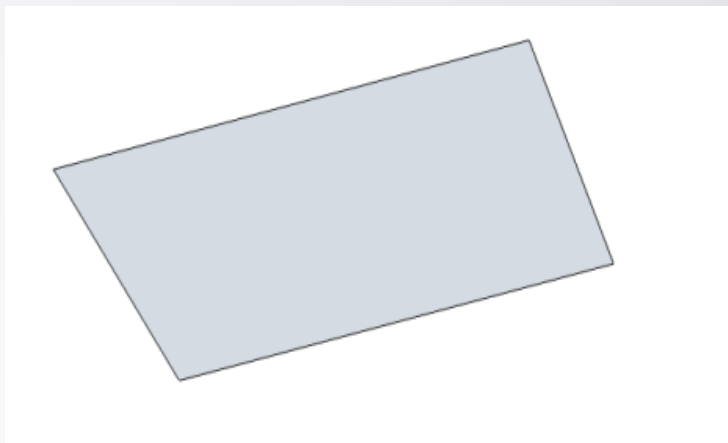
入口选择在基地的宽处，并留出一块空地，便于各种型号的货车运输的方便



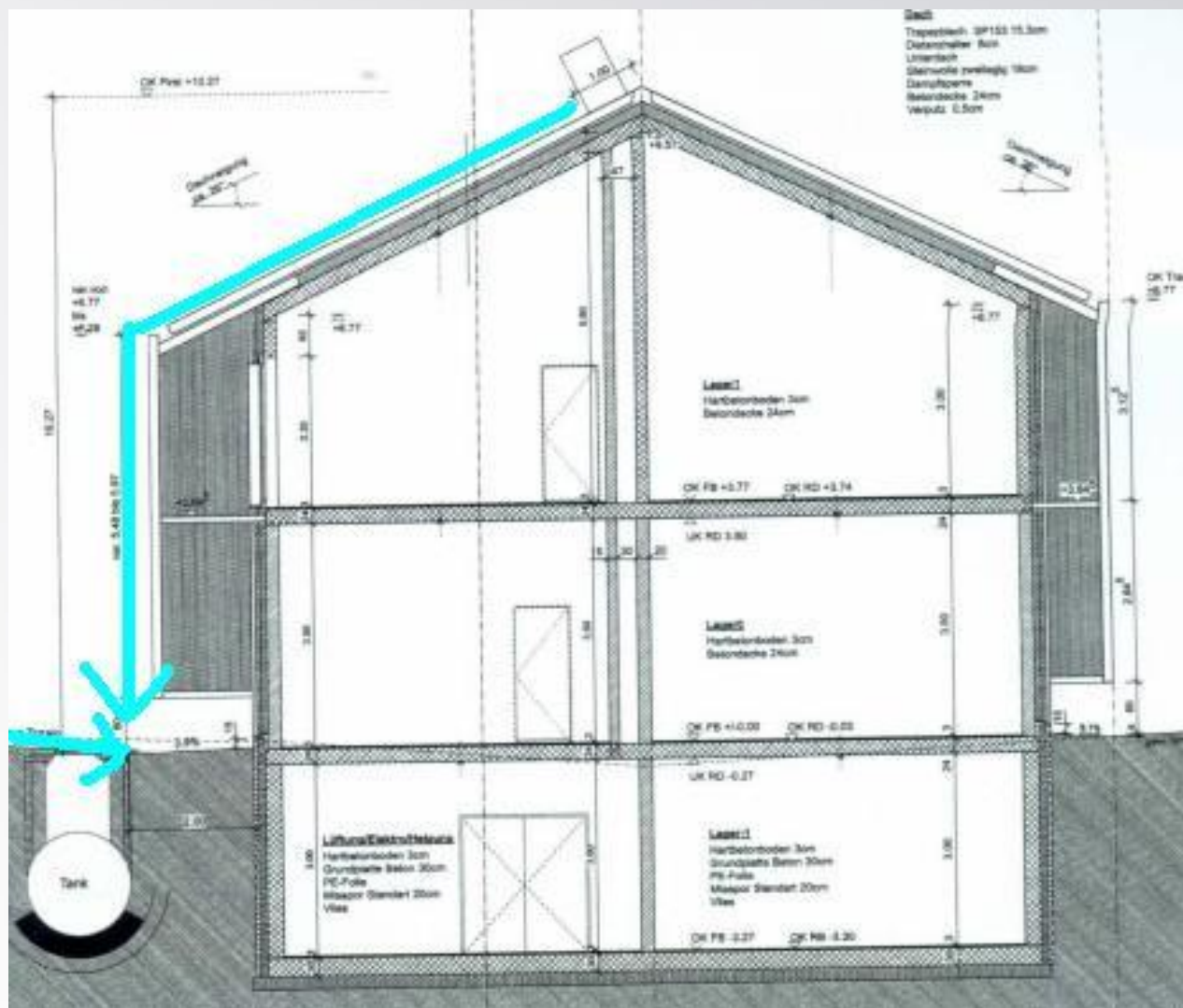
由于上述的两个理由和以及建筑的形式感，最终建筑的平面就被确定为了一个有一边平行的不规则四边形



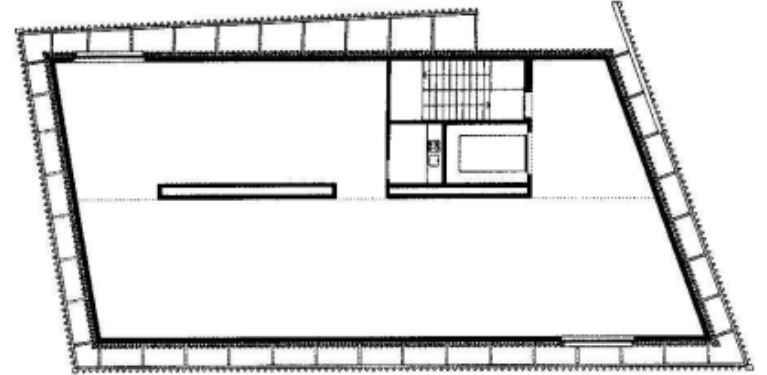
有了平面形状的限制，建筑师按照其一向简洁的风格将平面直接升起形成了这个三维的体块，而屋顶形式的选择是由于当地要求屋顶需要为统一的鞍形屋顶，建筑的外形就确定了下来



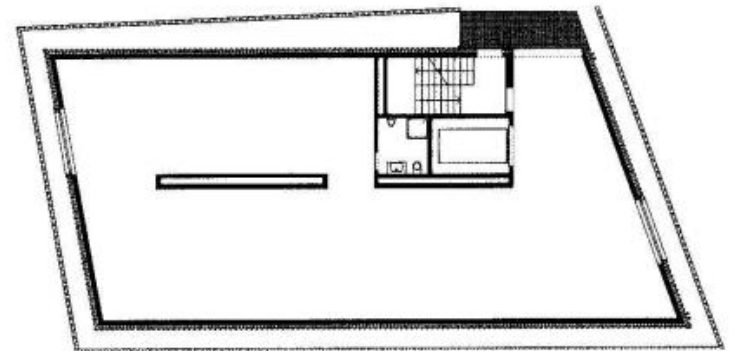
鞍型屋顶的另一个作用是蓄水



外部材质和内部空间分隔的决定因素：投影的展出方式

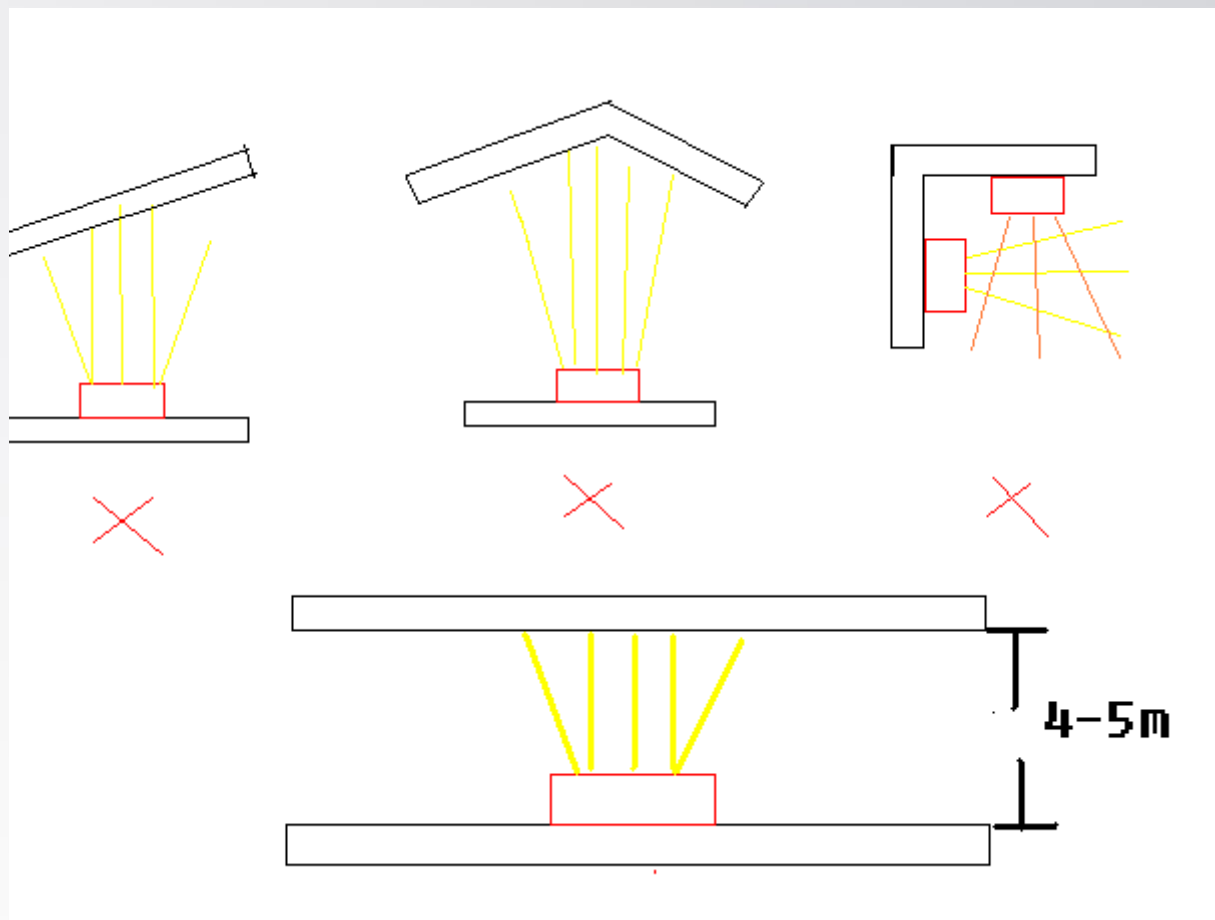


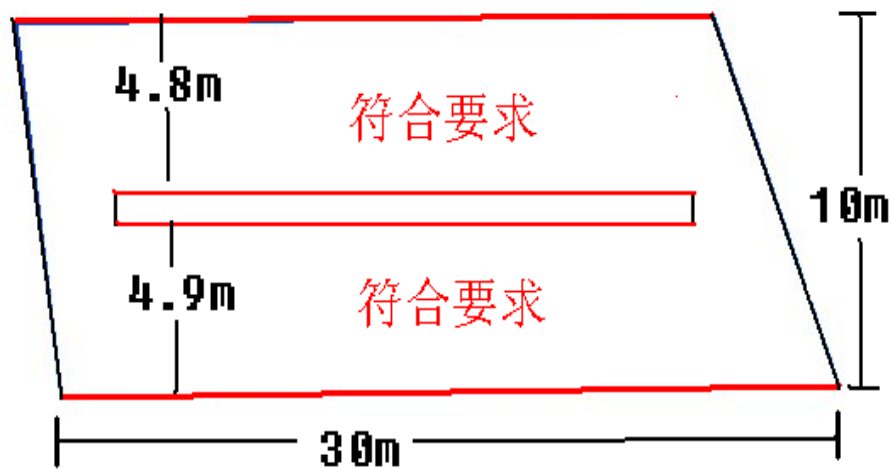
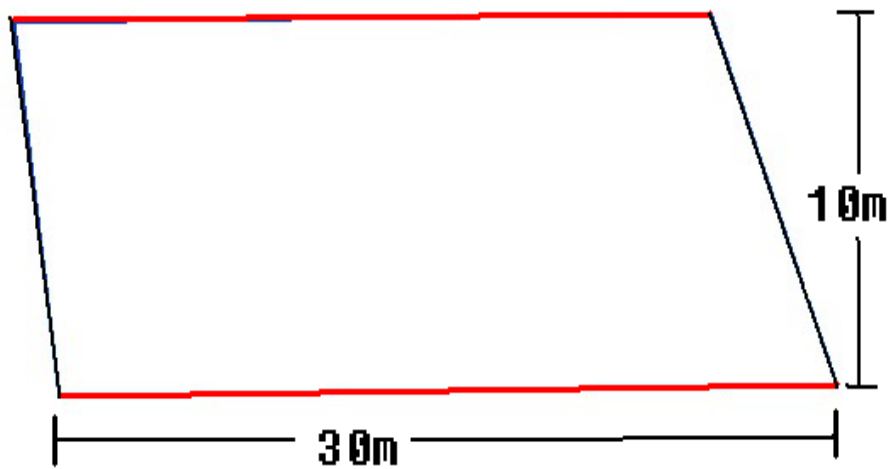
Planta alta / Upper floor plan

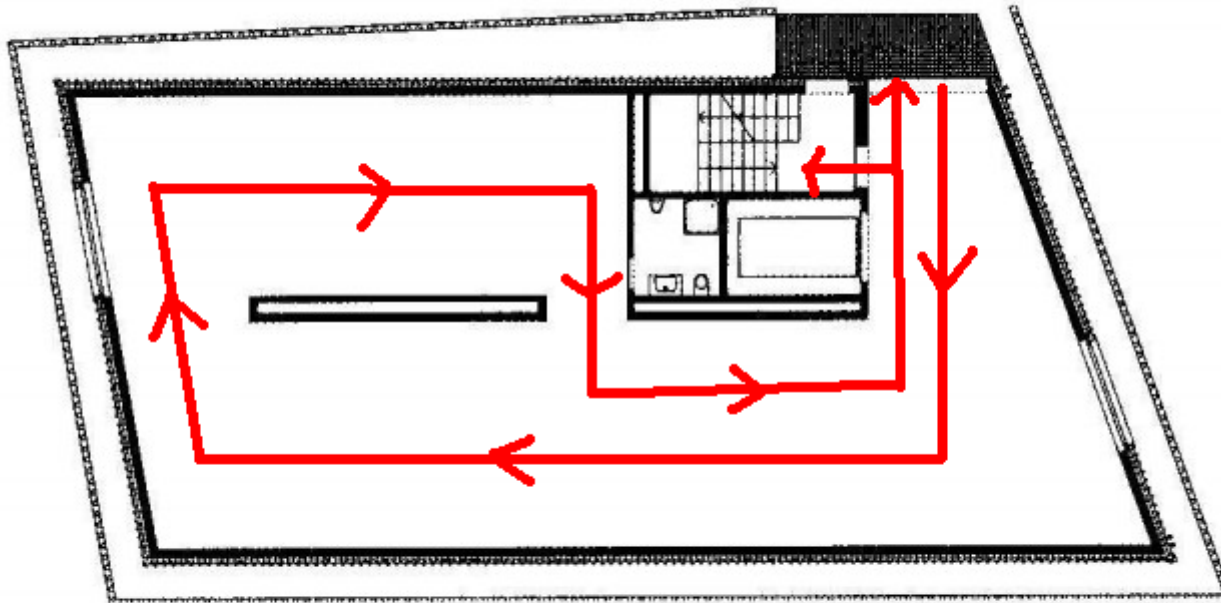


Planta baja / Ground floor plan

投影要求的空间

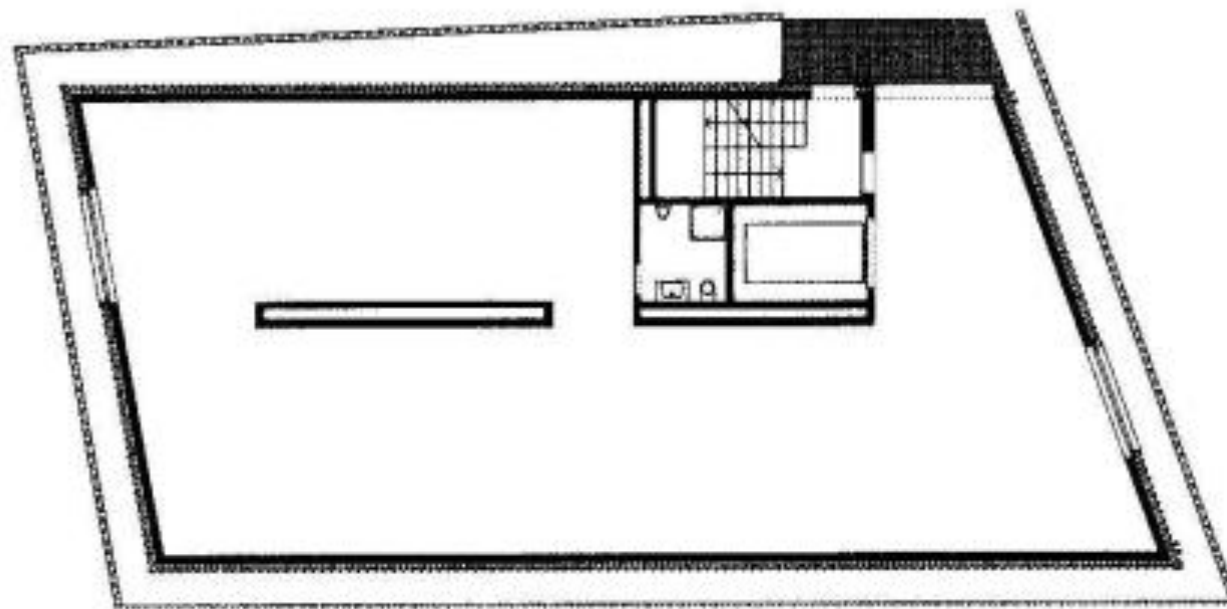




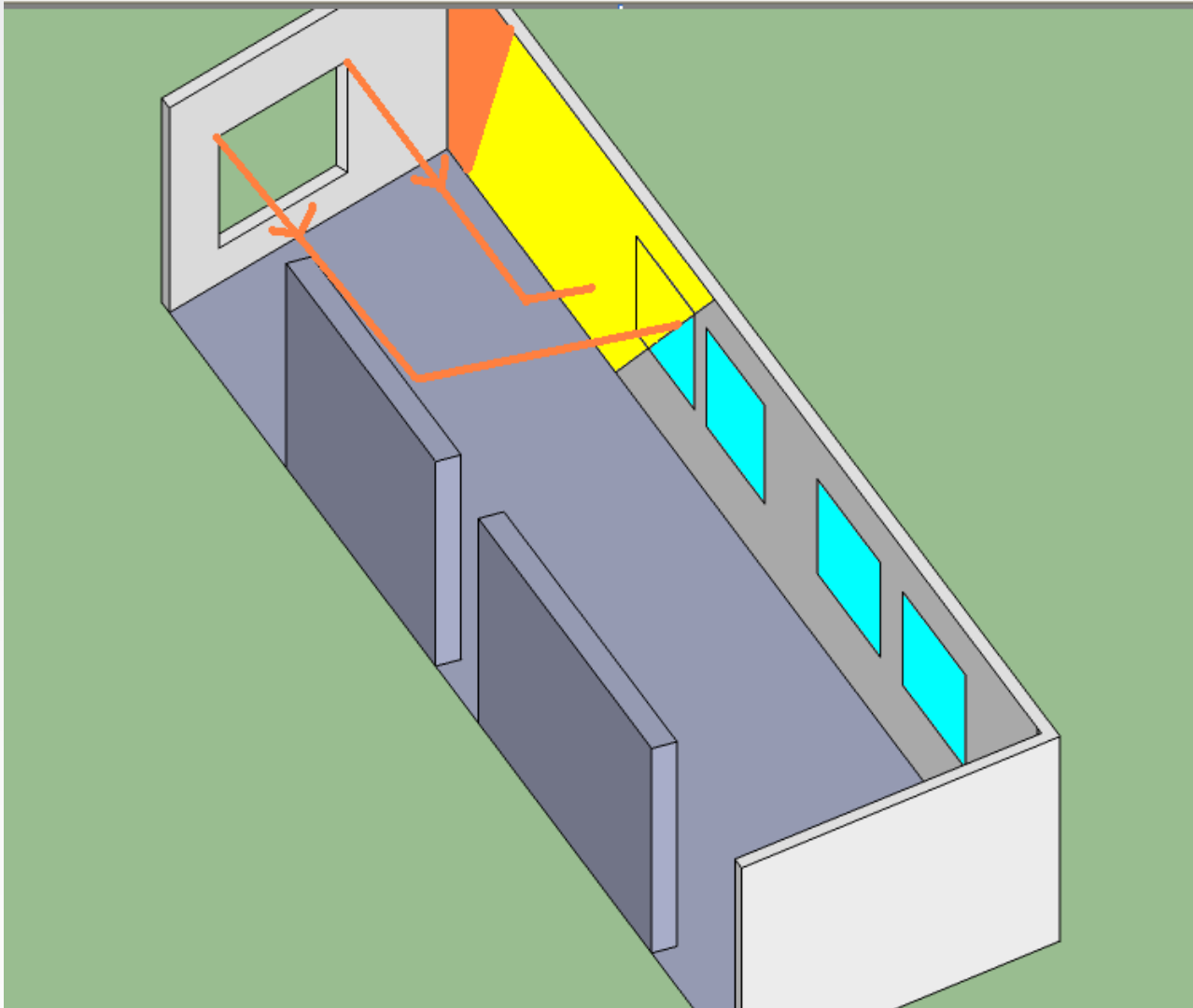


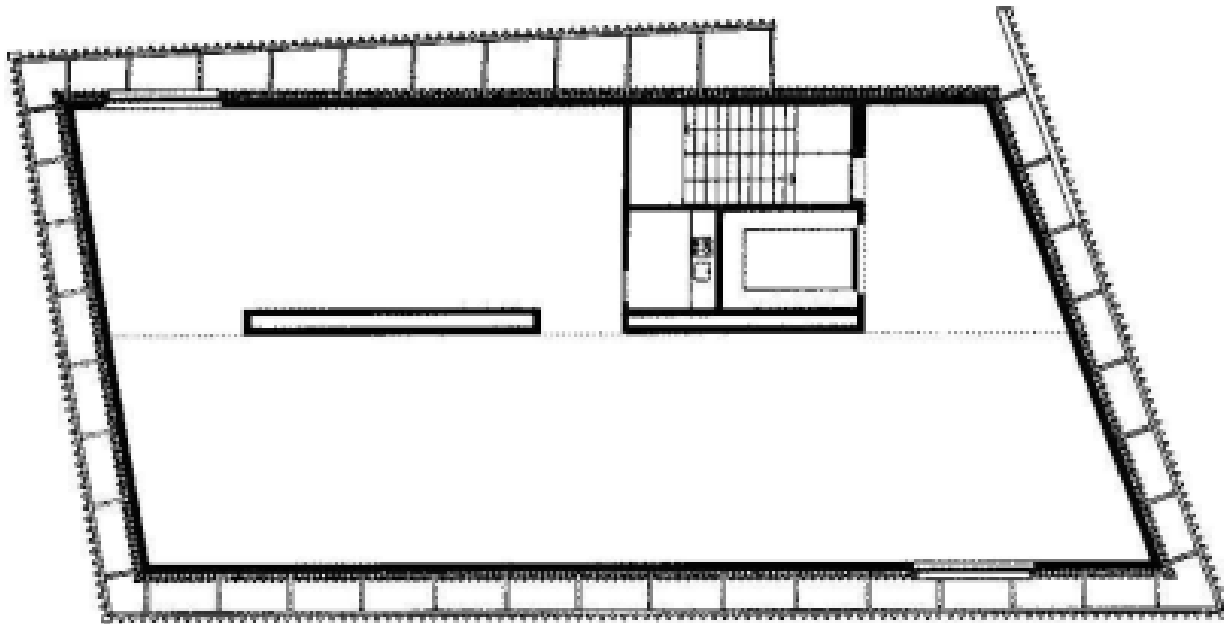
Planta baja / Ground floor plan

外部穿孔金属板的应用和开窗位置的选择以及承重墙对空间的分隔都对投影的展出方式服务

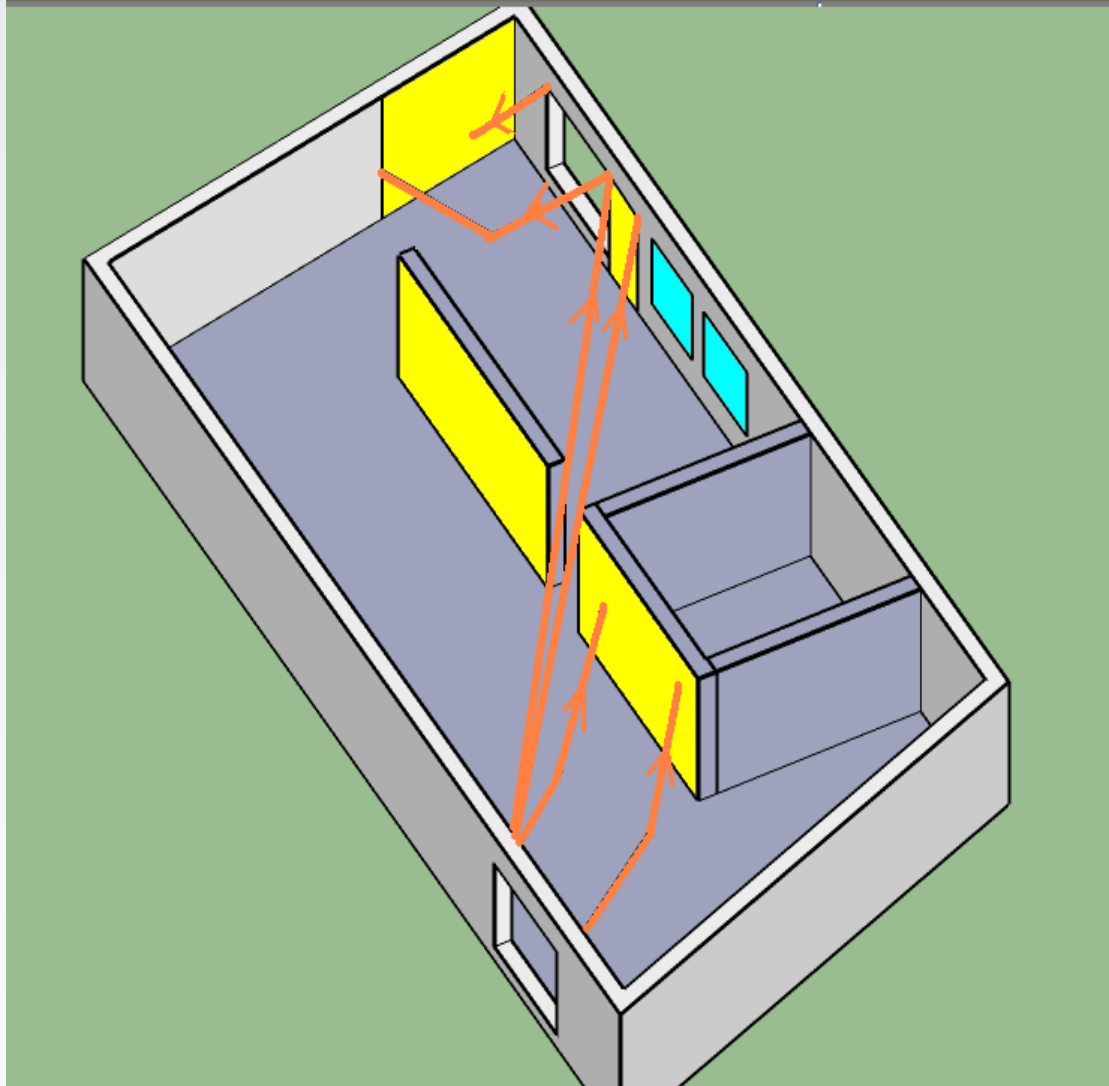


Planta baja / Ground floor plan





Planta alta / Upper floor plan



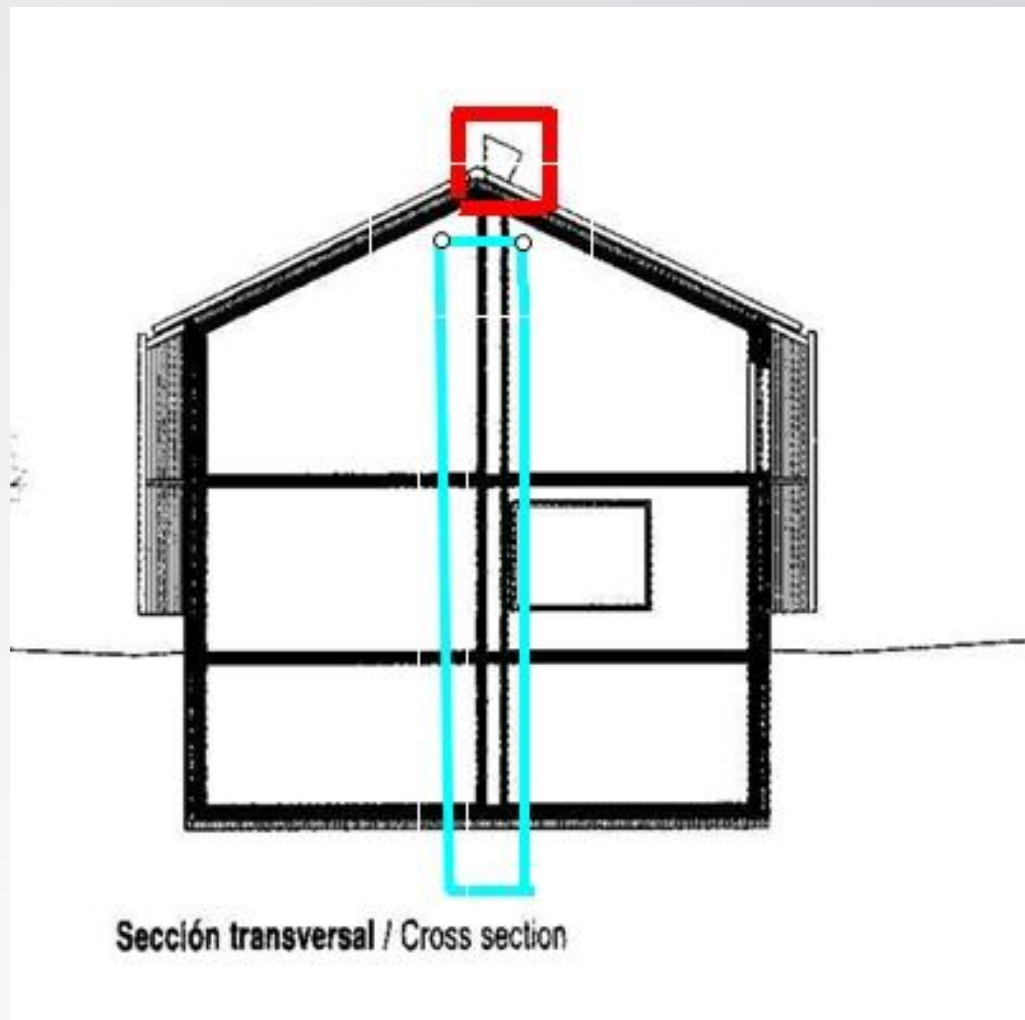
材质：混凝土 作用：为艺术品营造了一个宁静纯洁的气氛

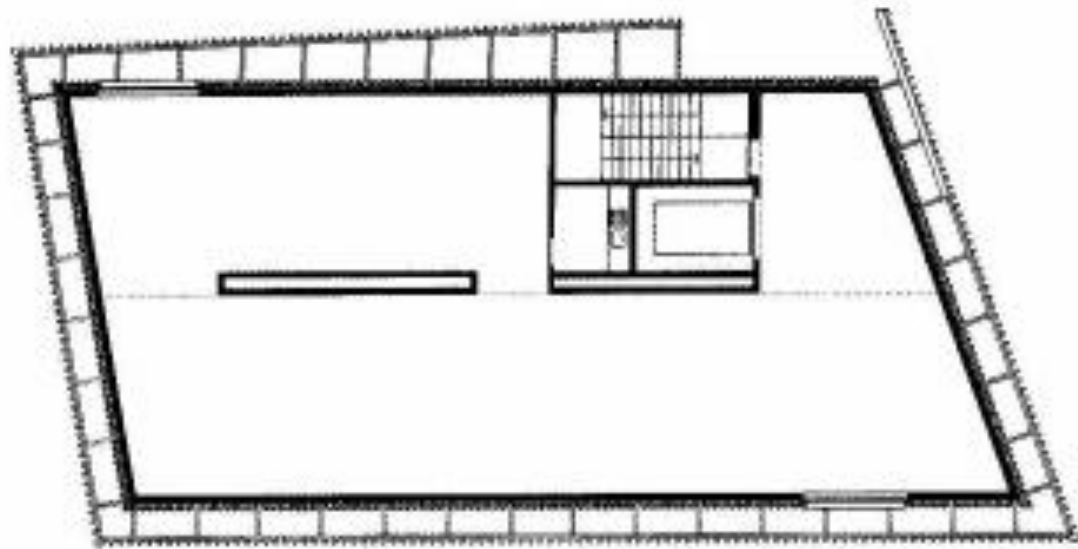


总结

- 1 建筑师的设计理念
- 2 场地的限制
- 3 对艺术品的保护（投影的展出方式）
- 共同作用的充满逻辑的结果

存在的疑问及推测

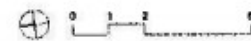


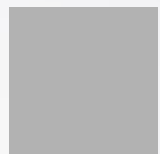


Planta alta / Upper floor plan



Planta sótano / Basement floor plan





谢谢观赏



