



MAISON

GO

建筑也摇摆

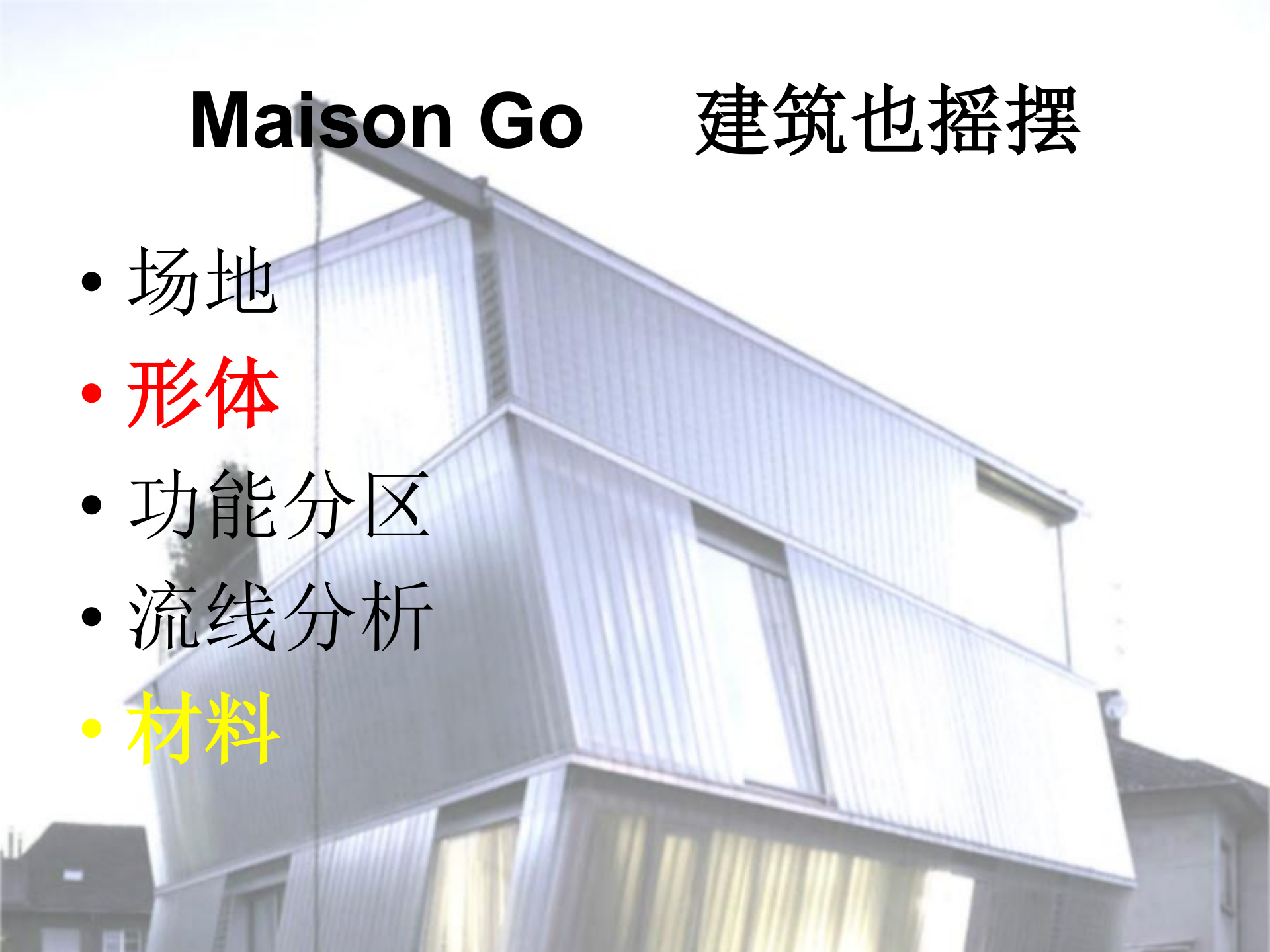
By 张粤翔

杨睿芳

Maison Go

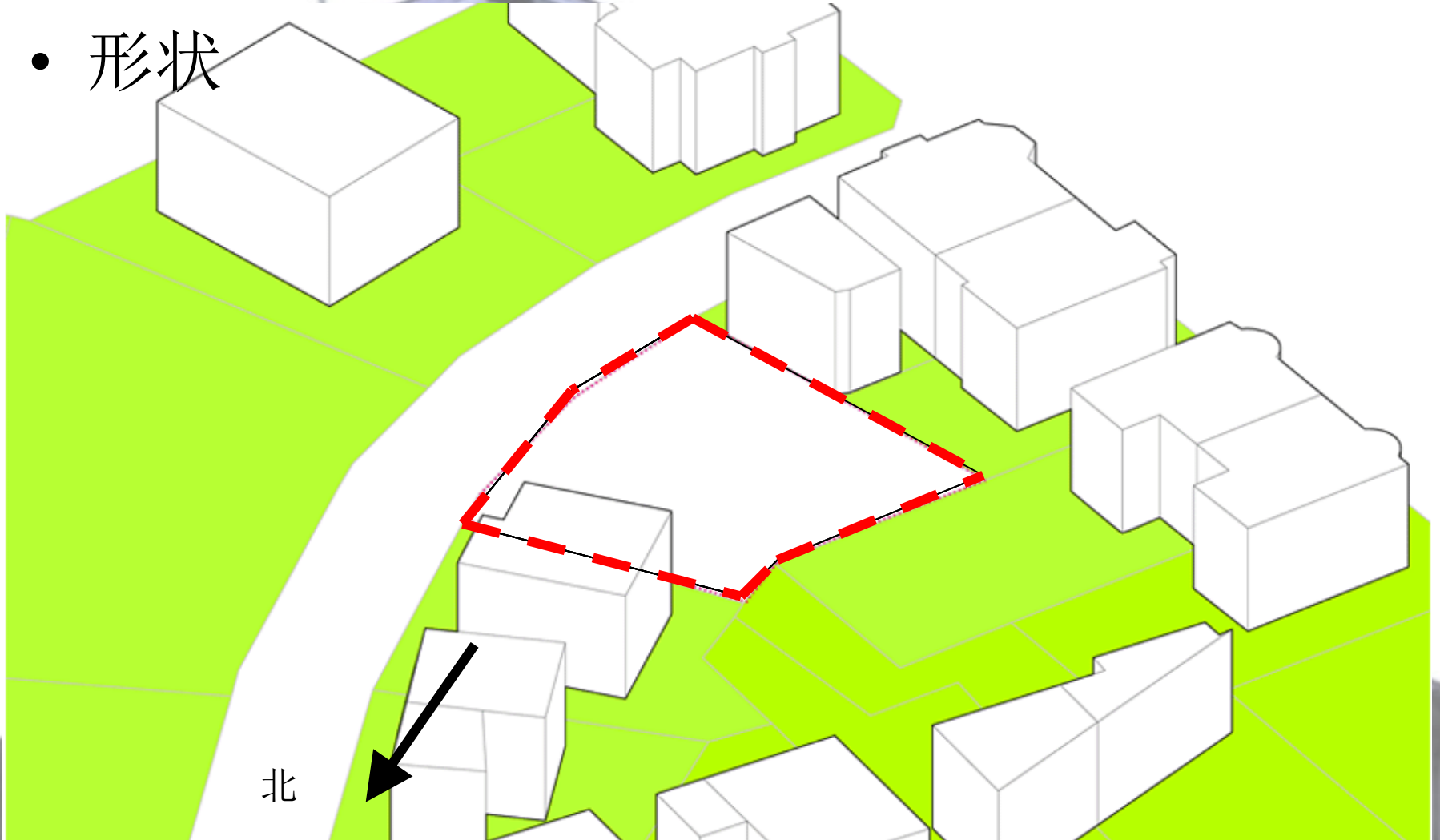
建筑也摇摆

- 场地
- 形体
- 功能分区
- 流线分析
- 材料



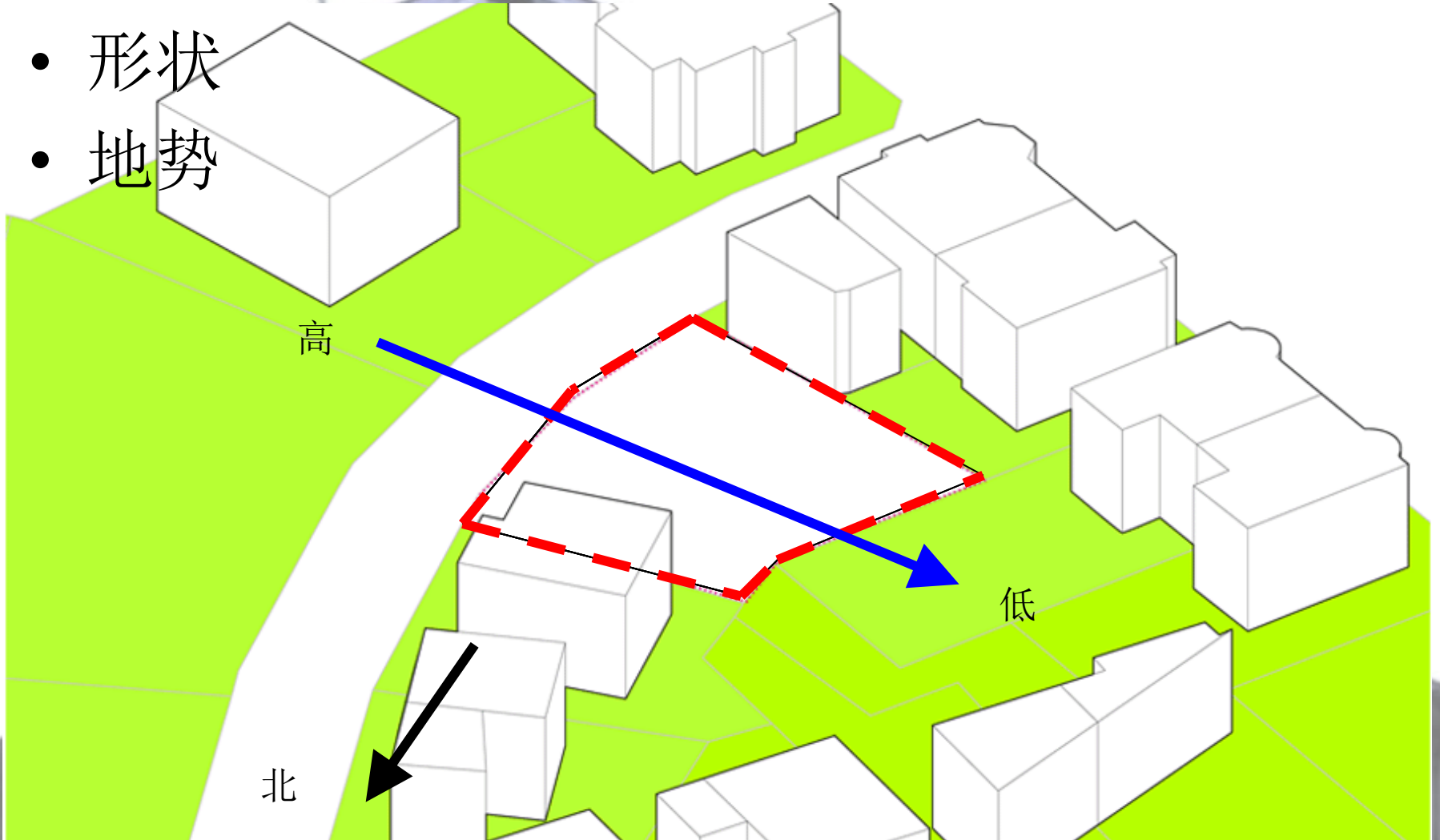
场地

- 形状



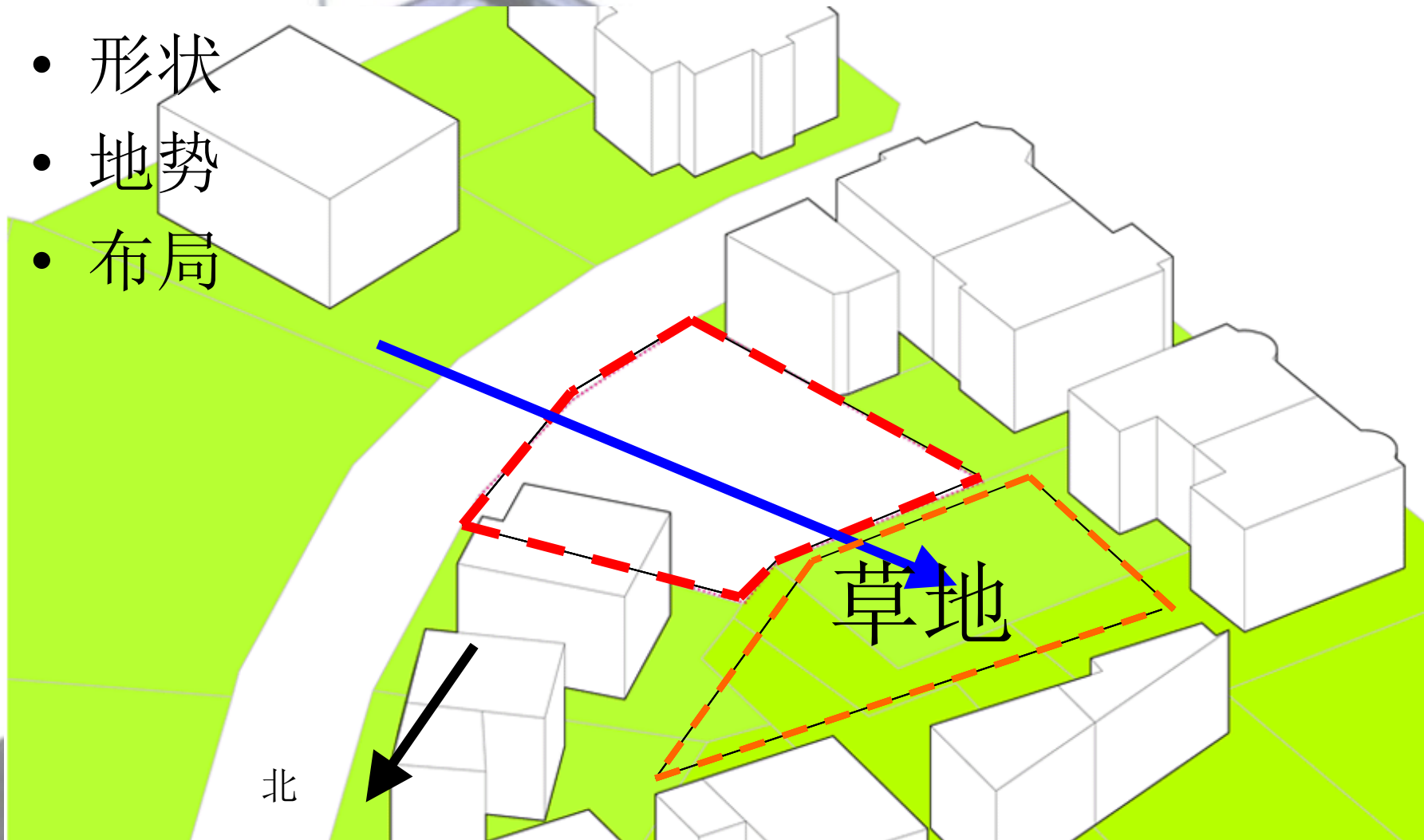
场地

- 形状
- 地势

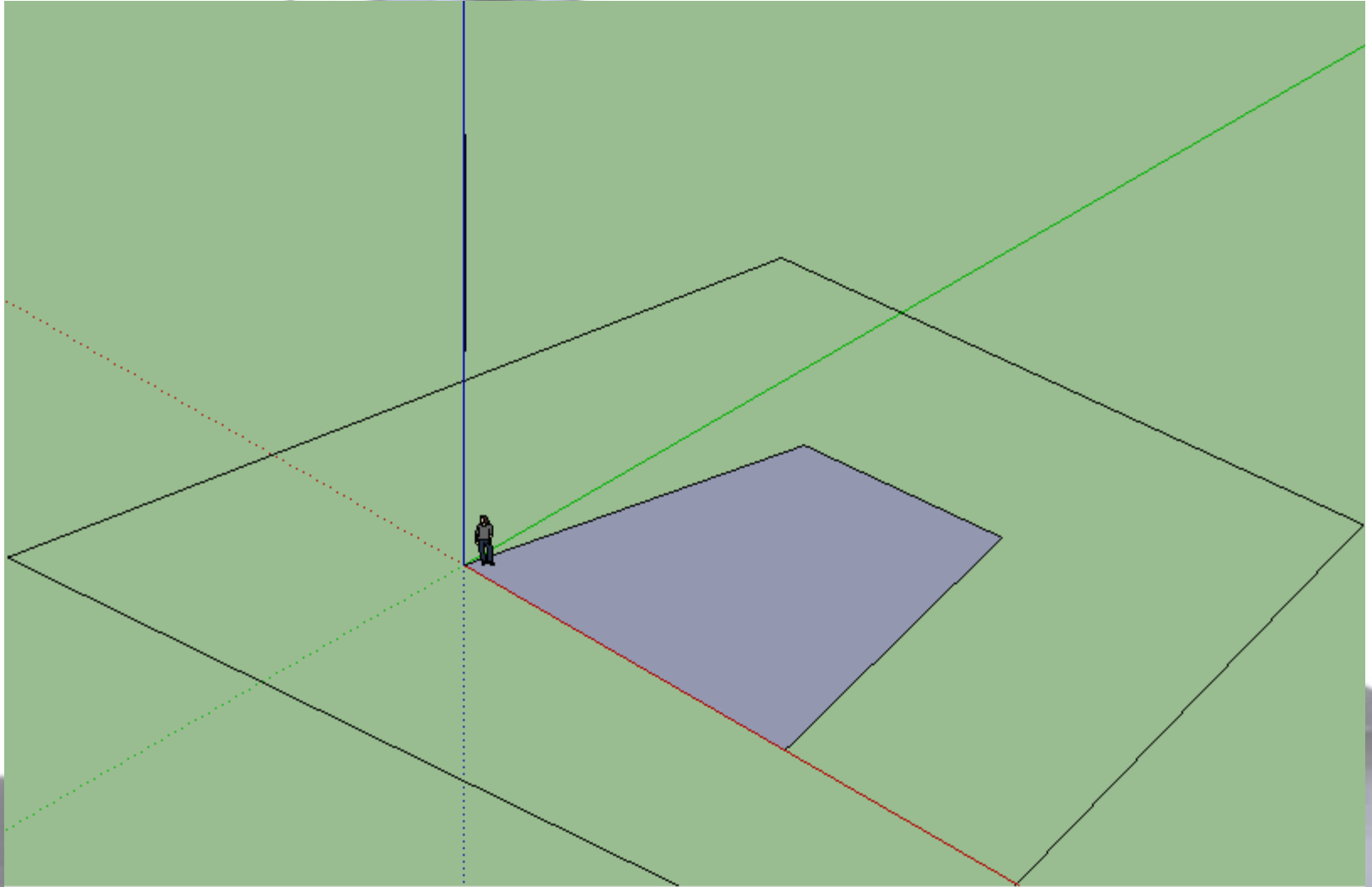


场地

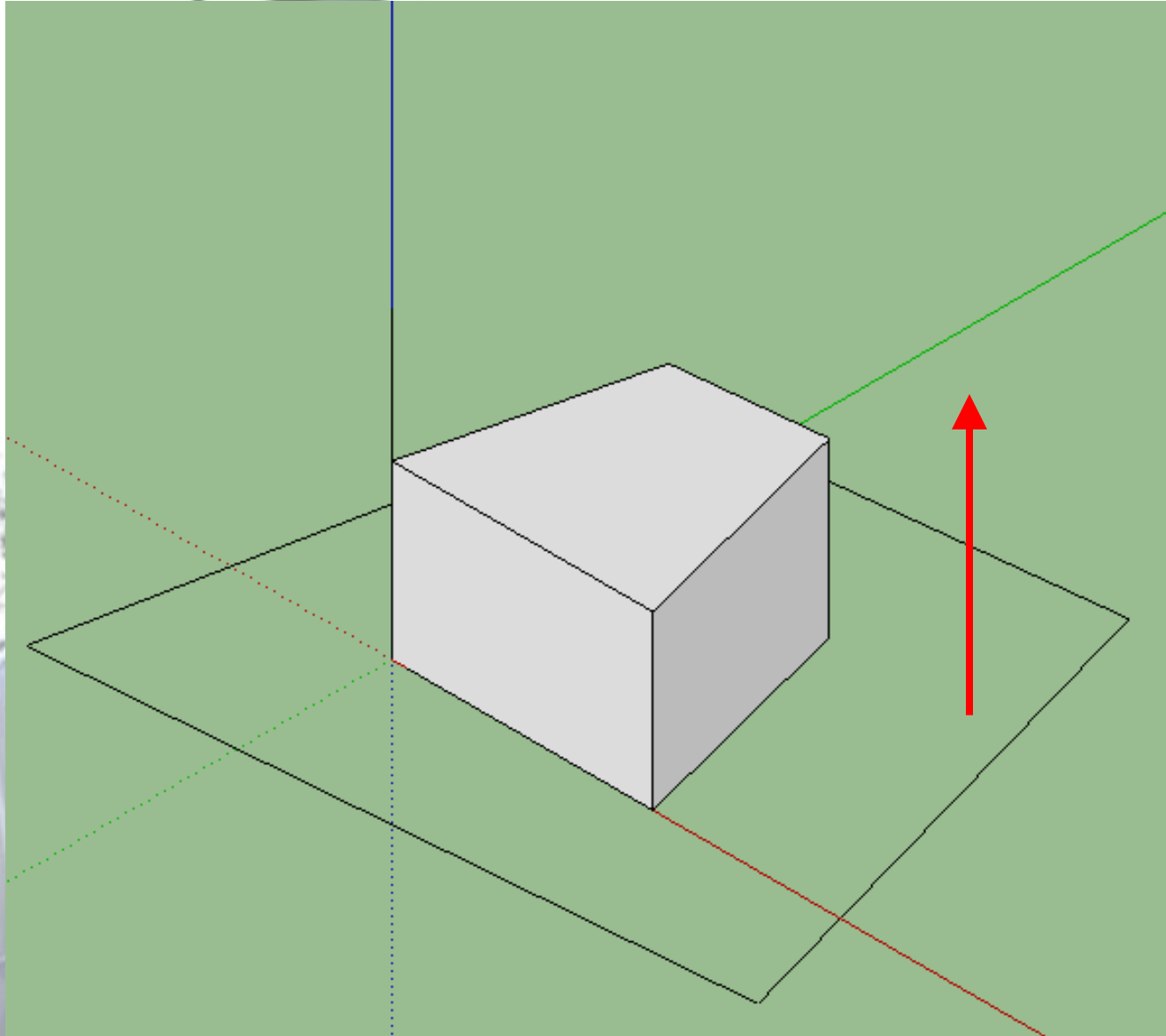
- 形状
- 地势
- 布局



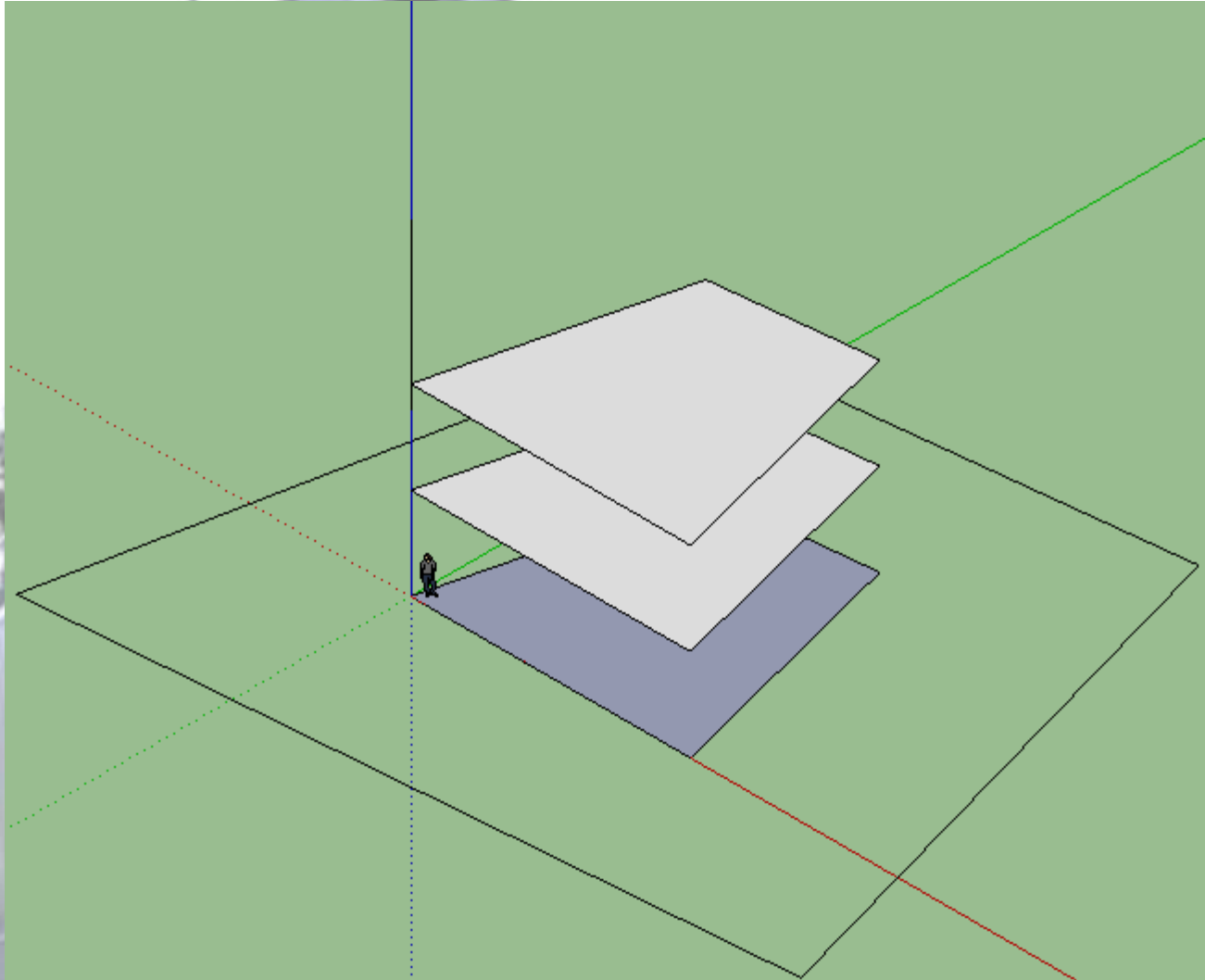
形体



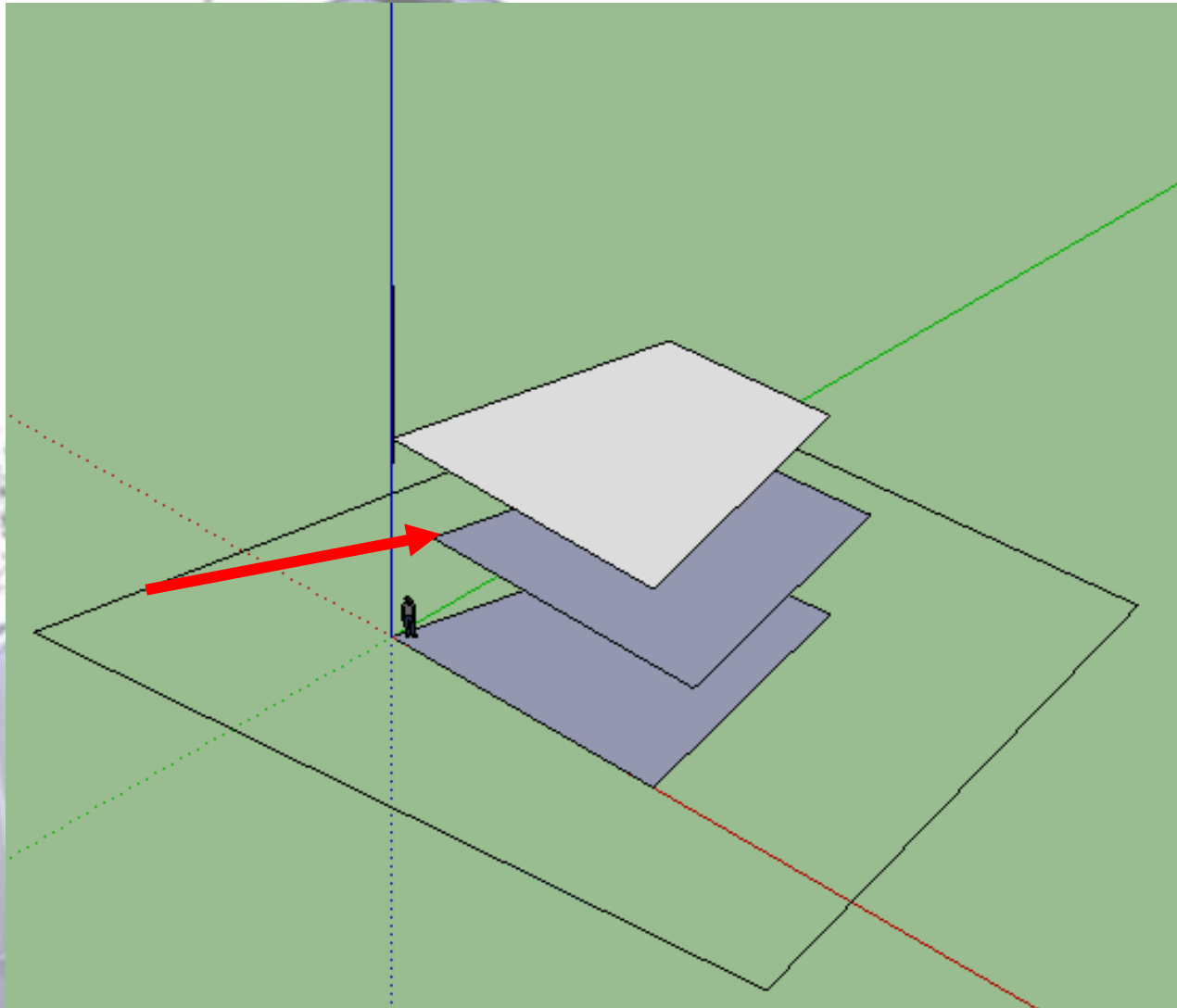
形体



形体

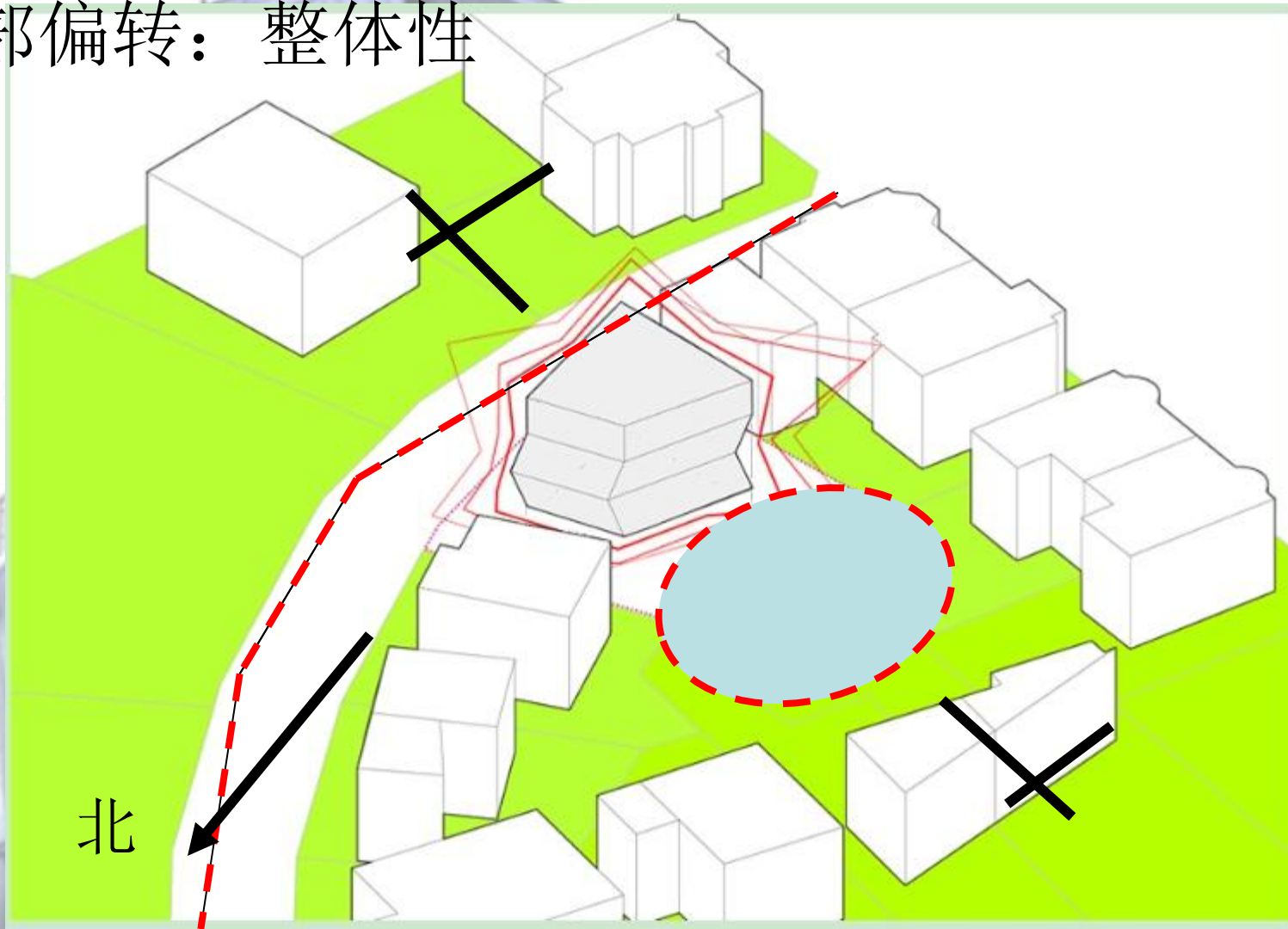


形体



形体

东部偏转：整体性

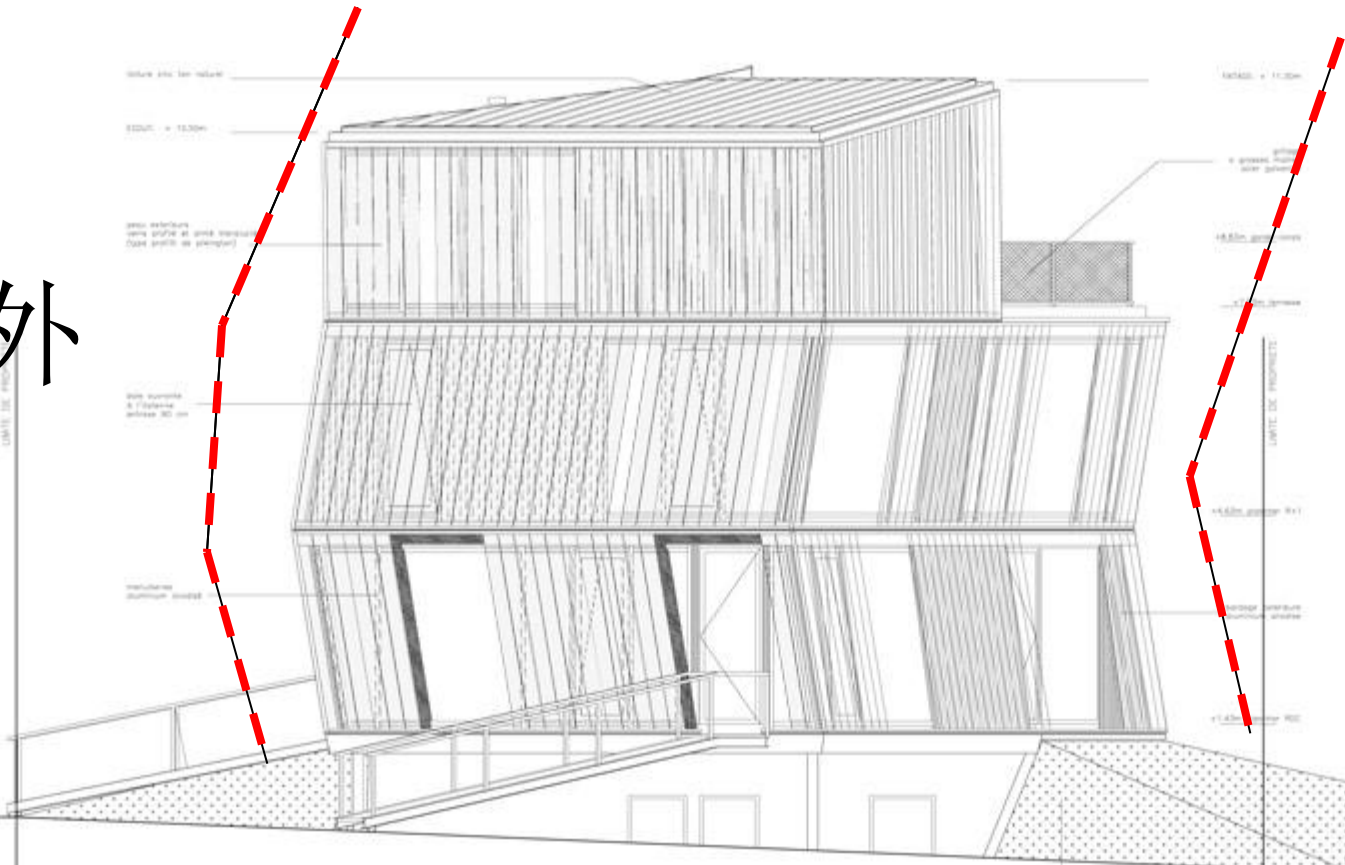


形体

- 东部偏转

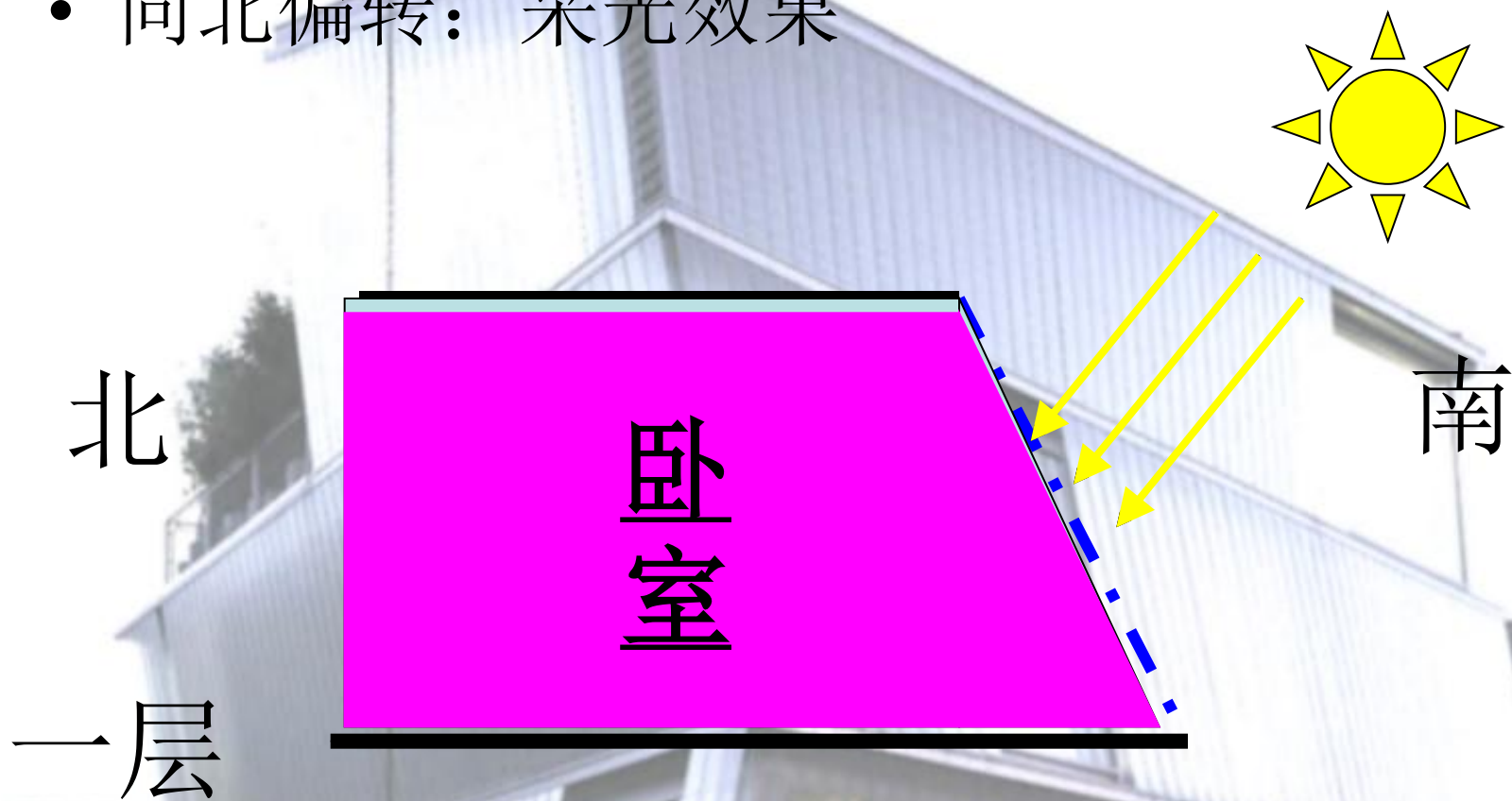
外

内

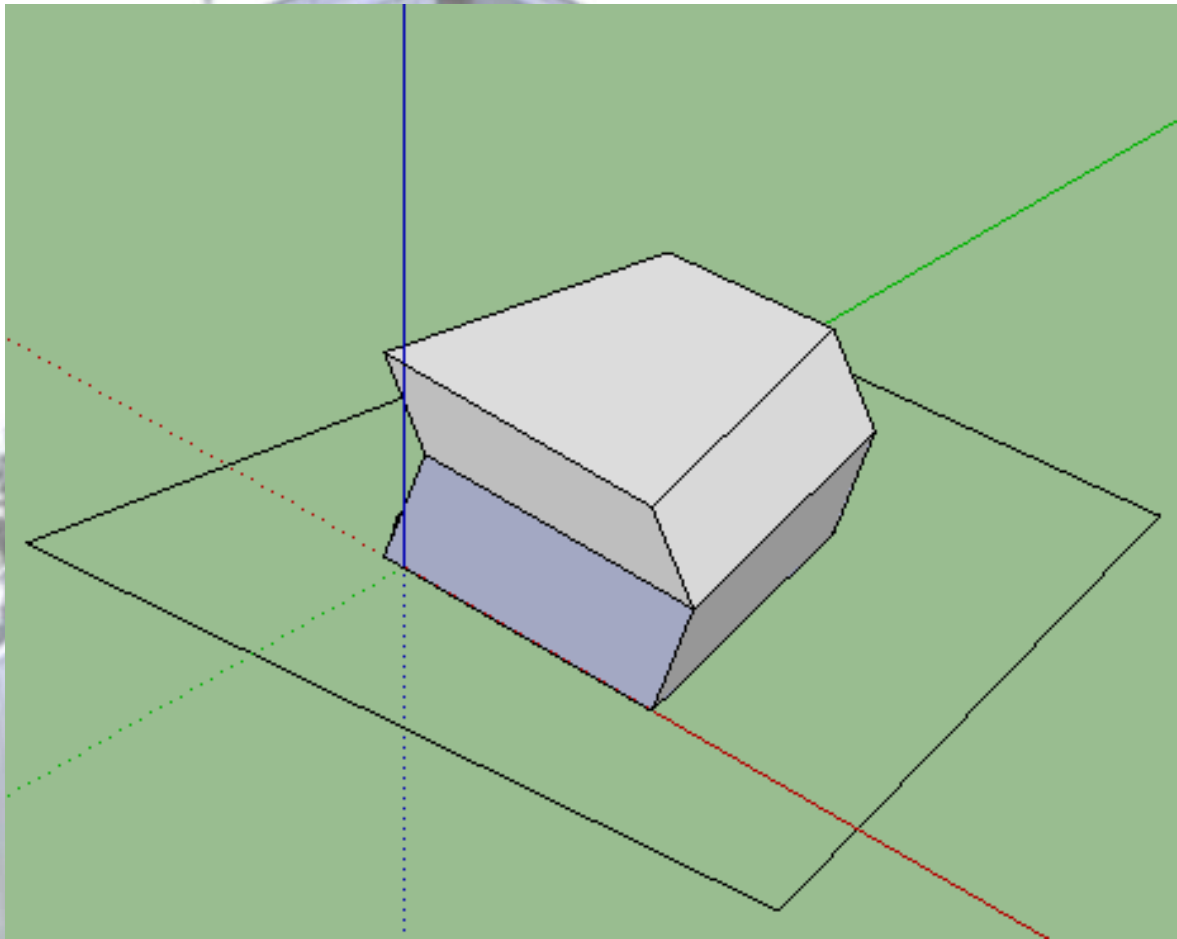


形体

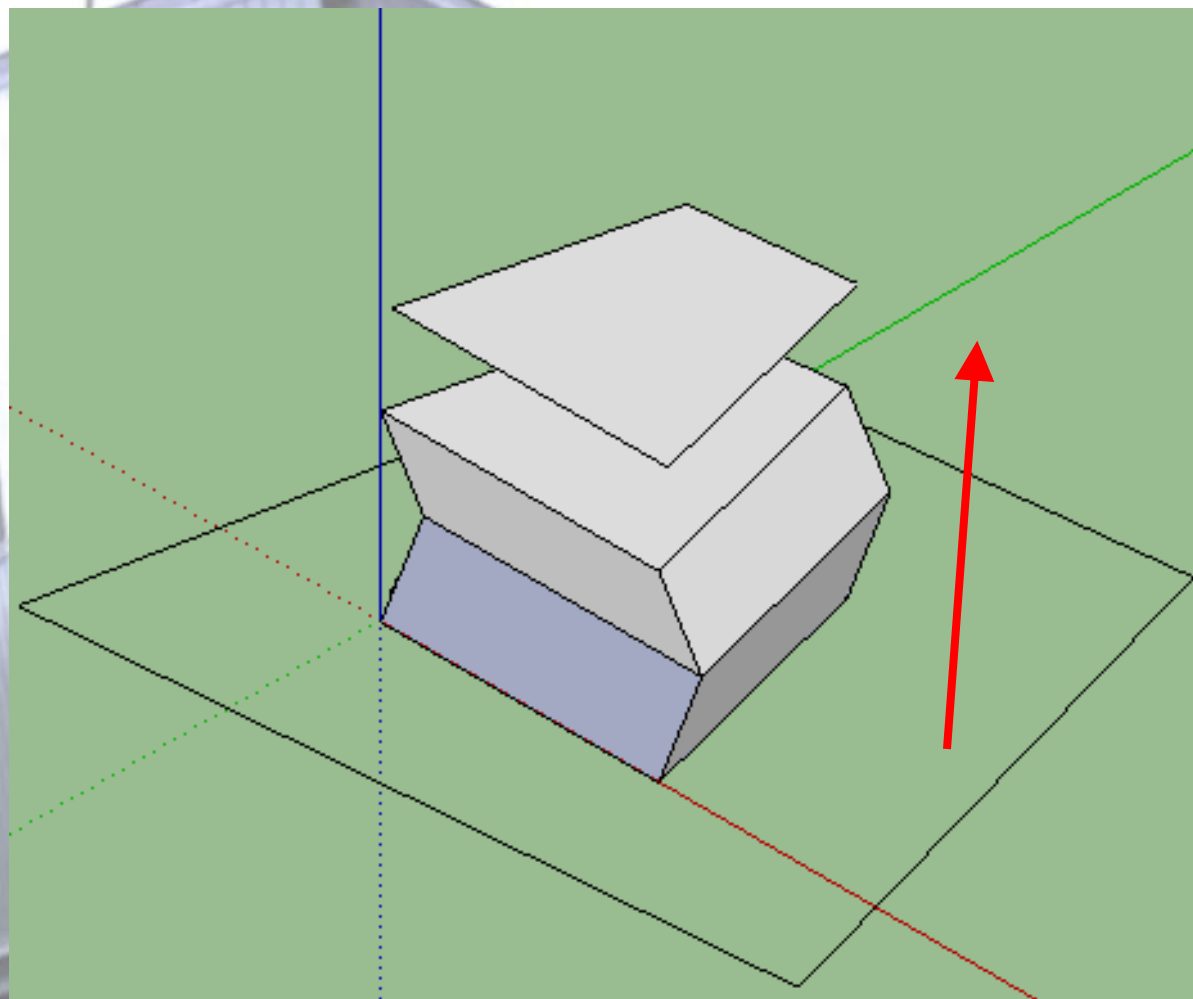
- 向北偏转：采光效果



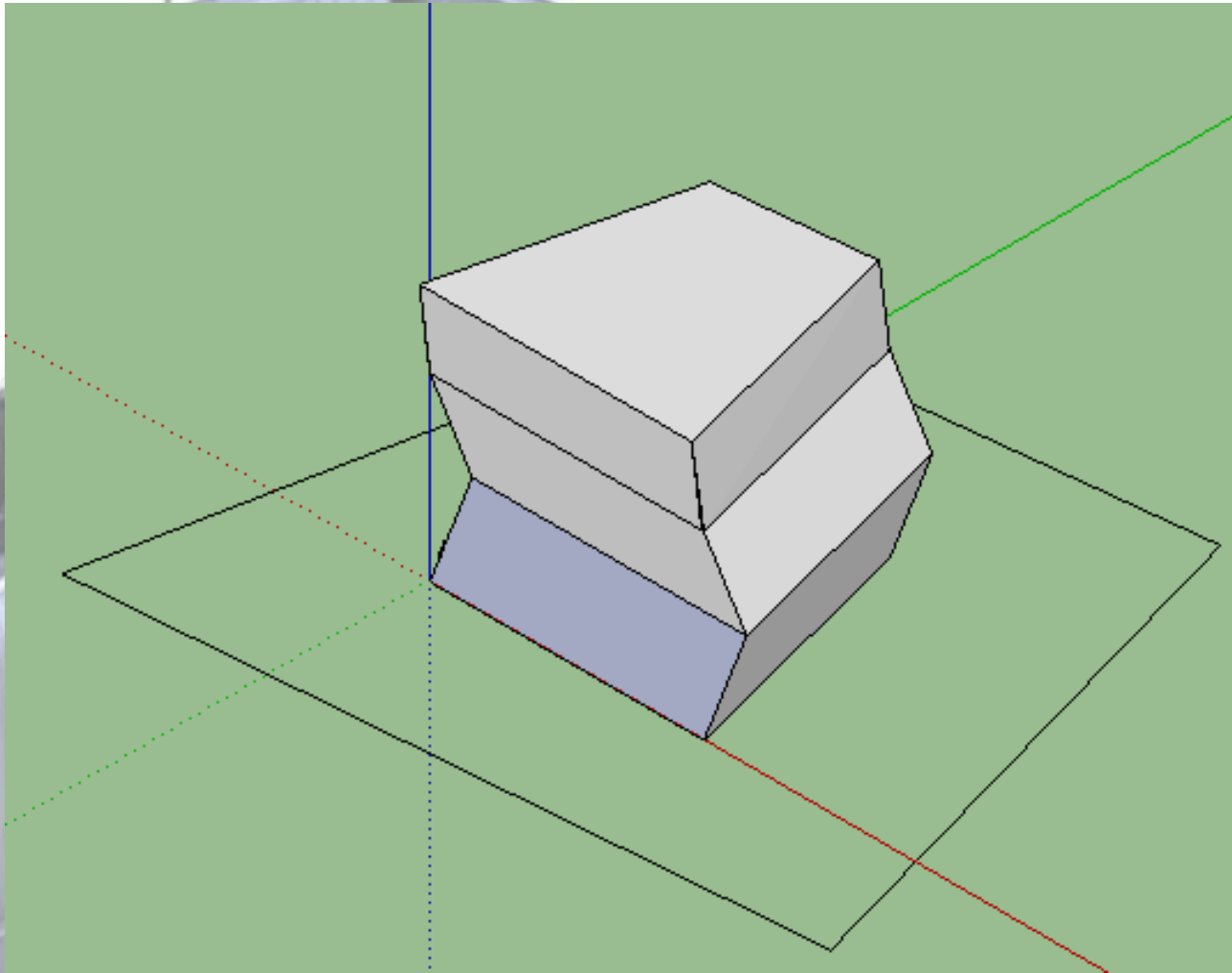
形体



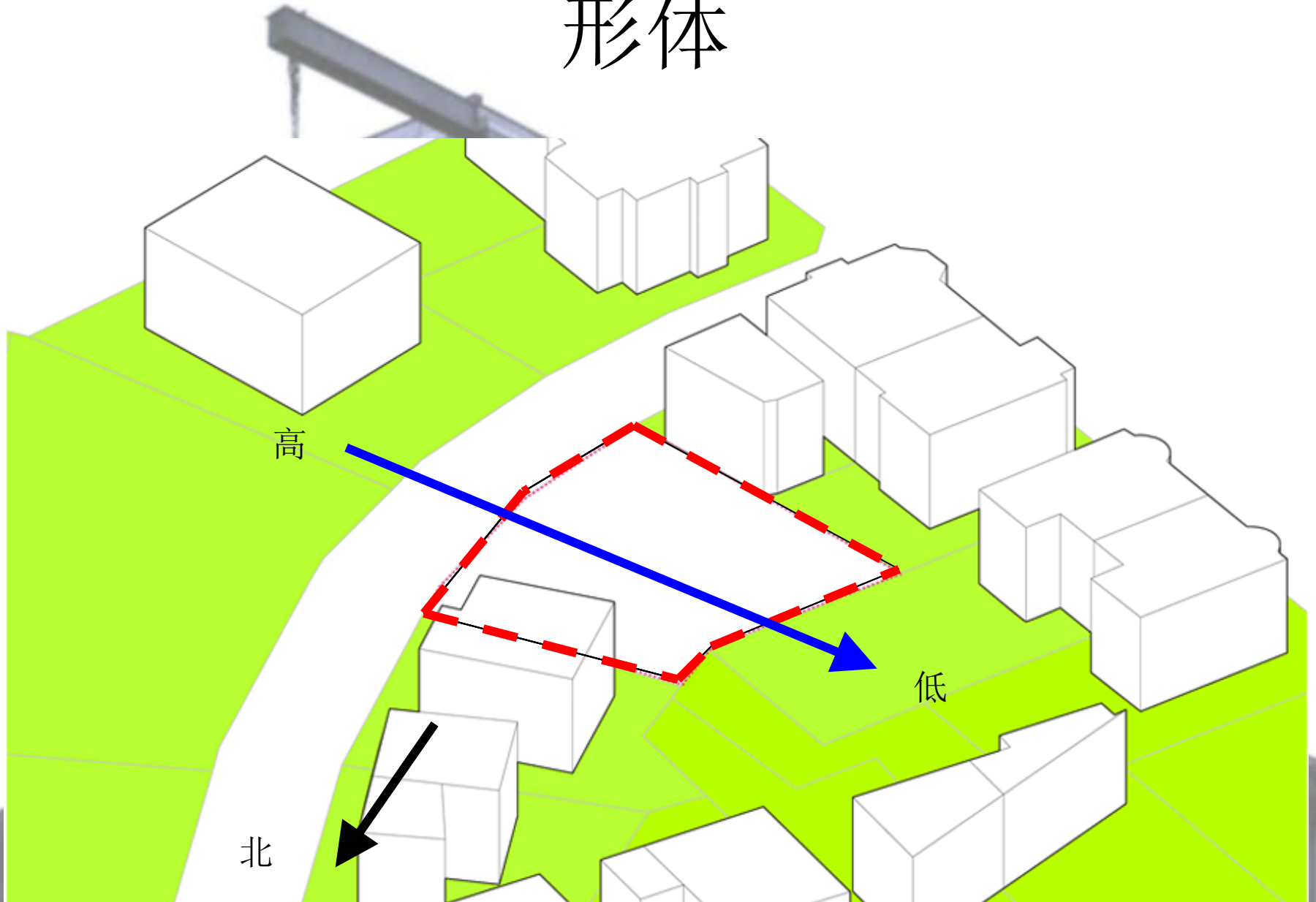
形体



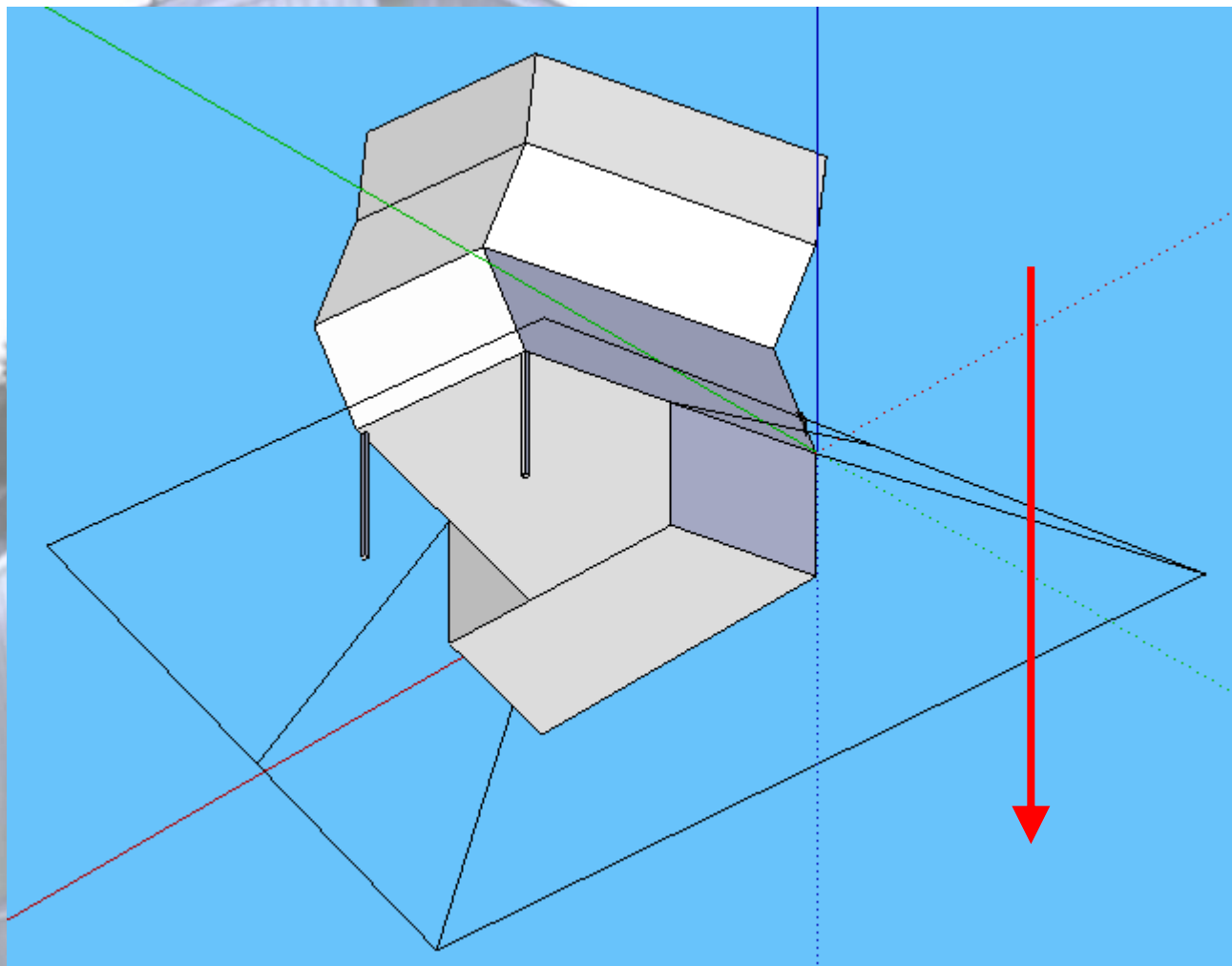
形体



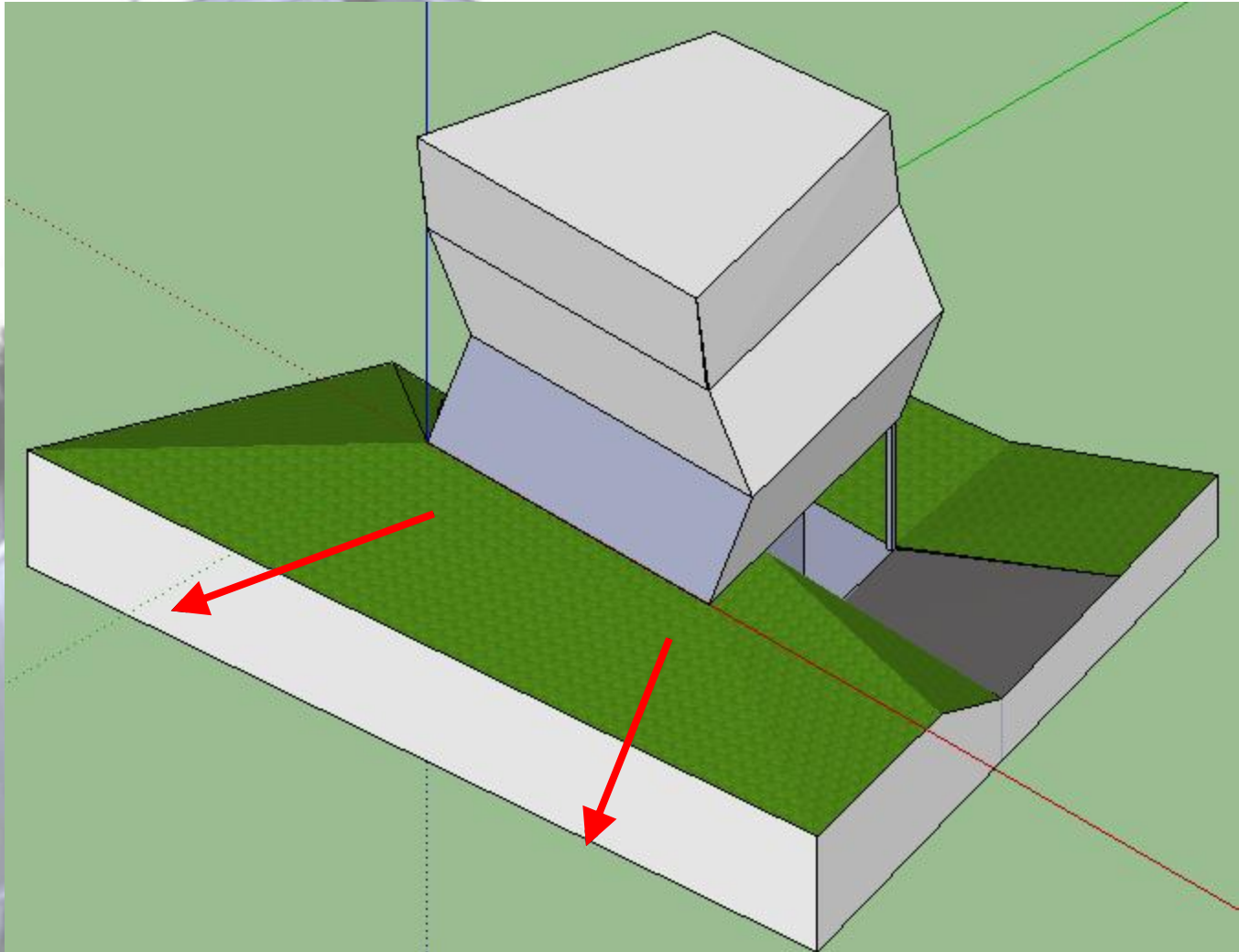
形体



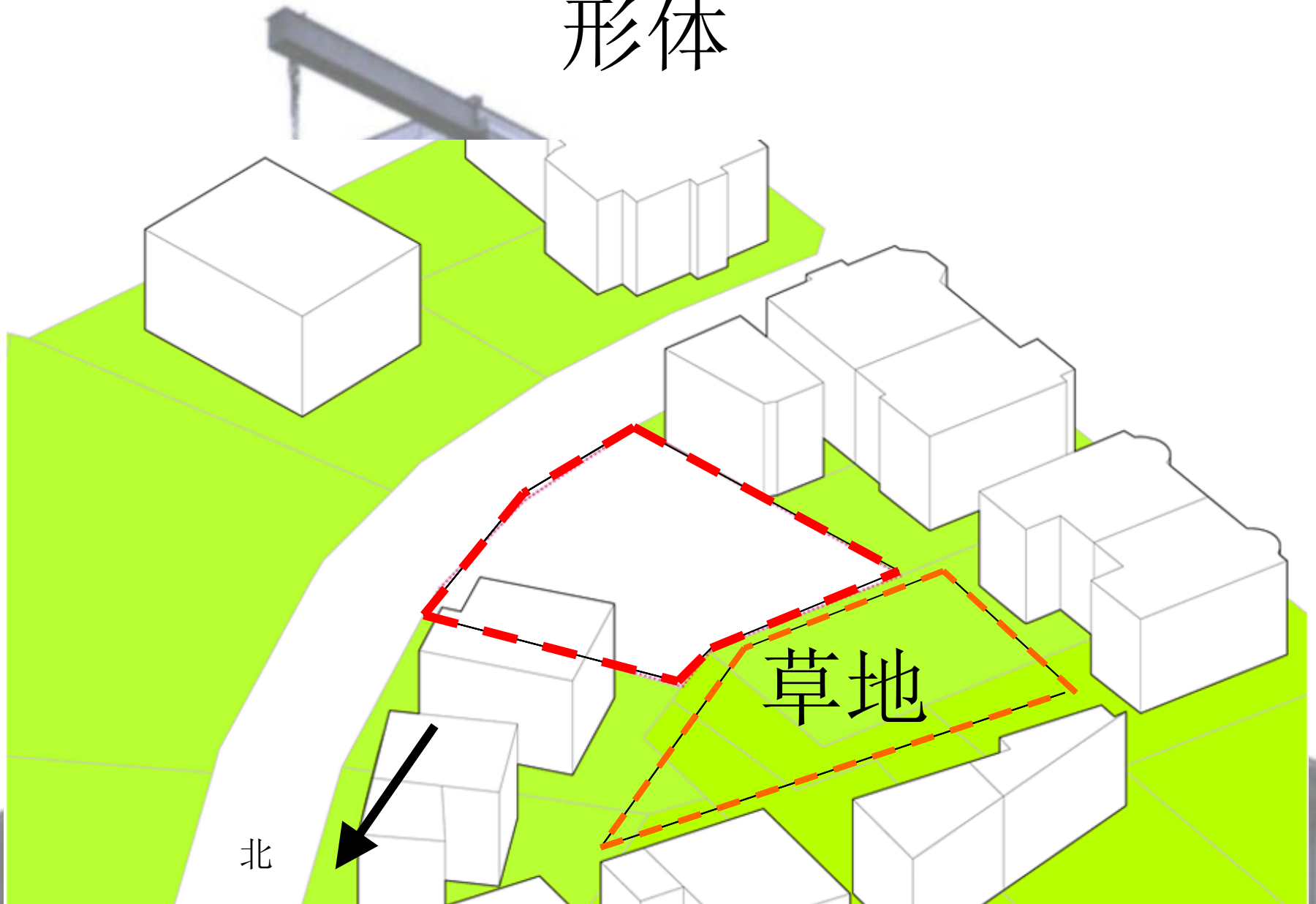
形体



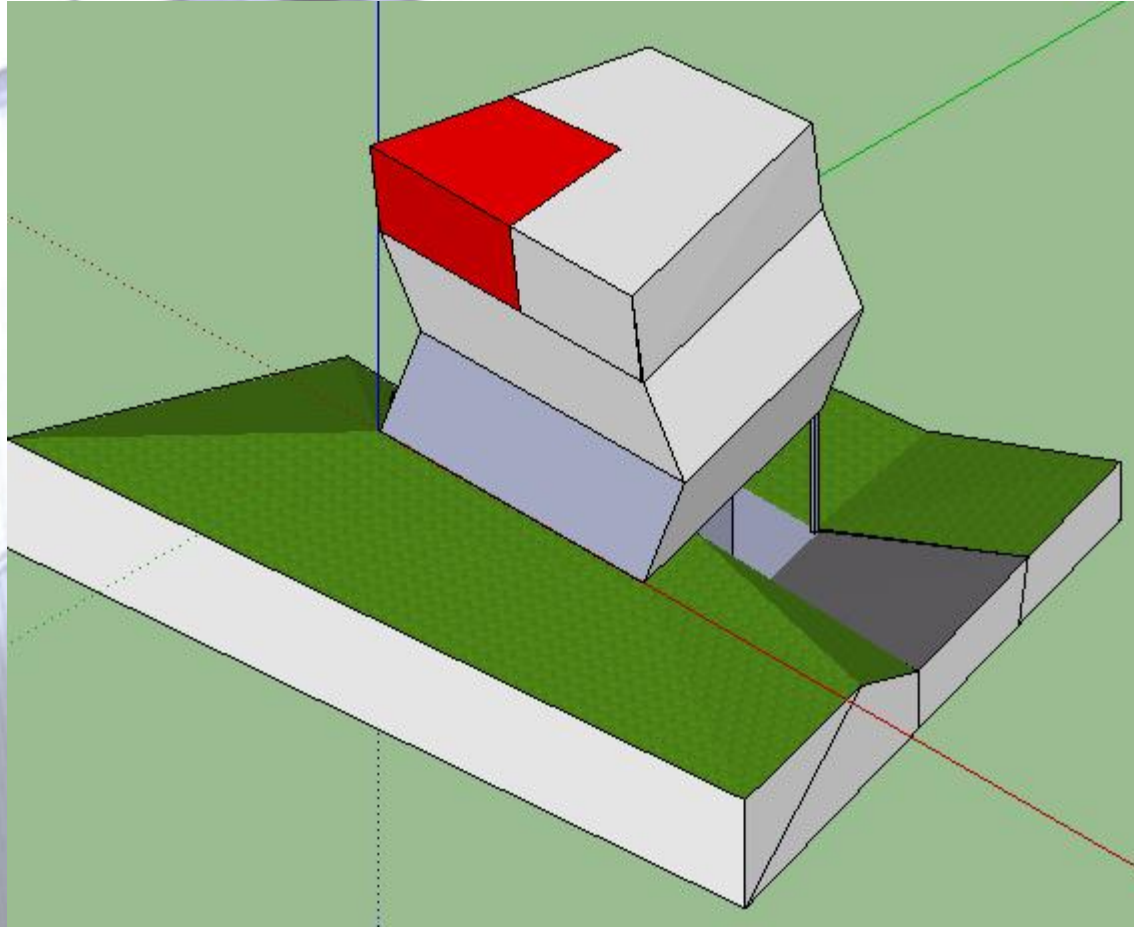
形体



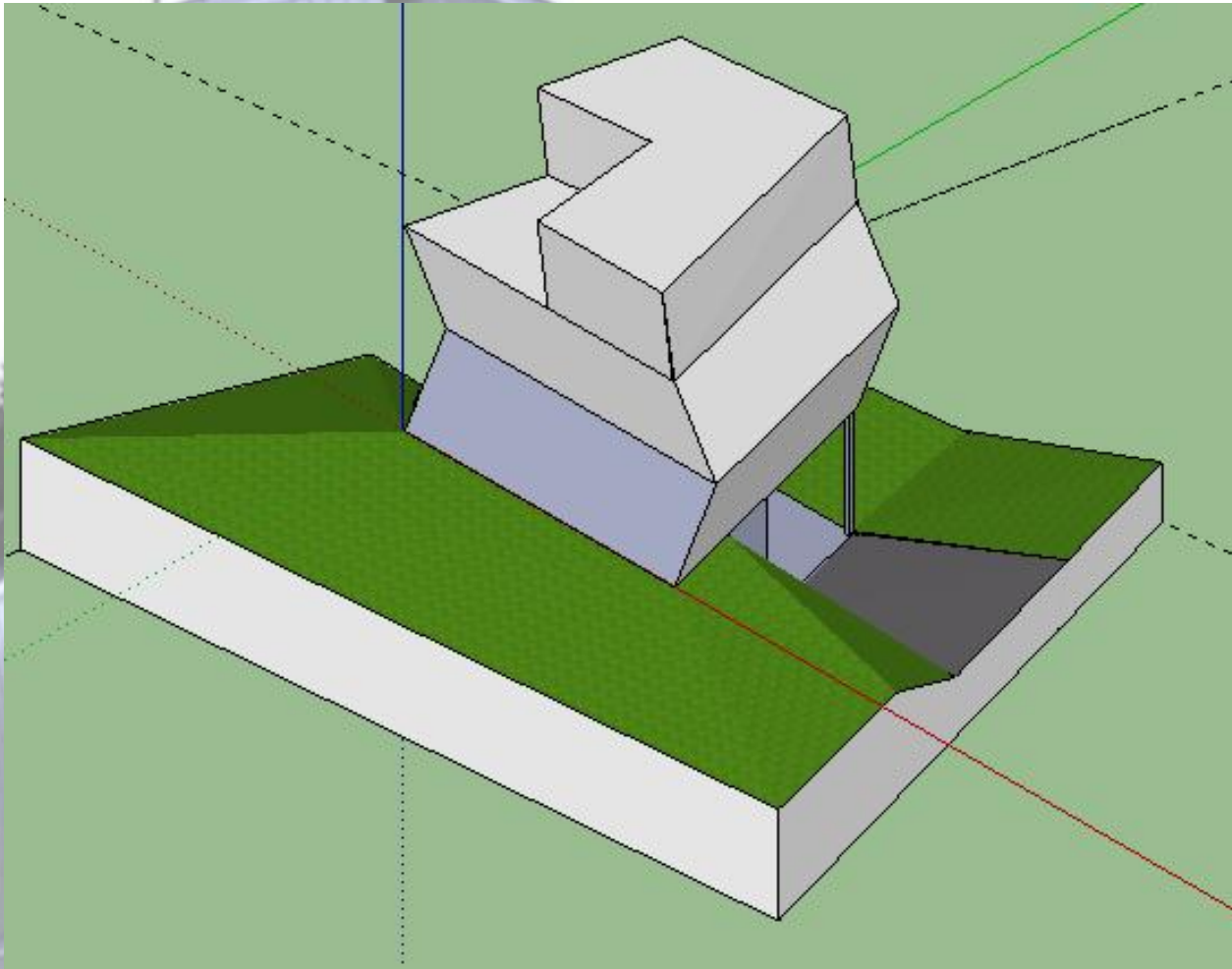
形体



形体

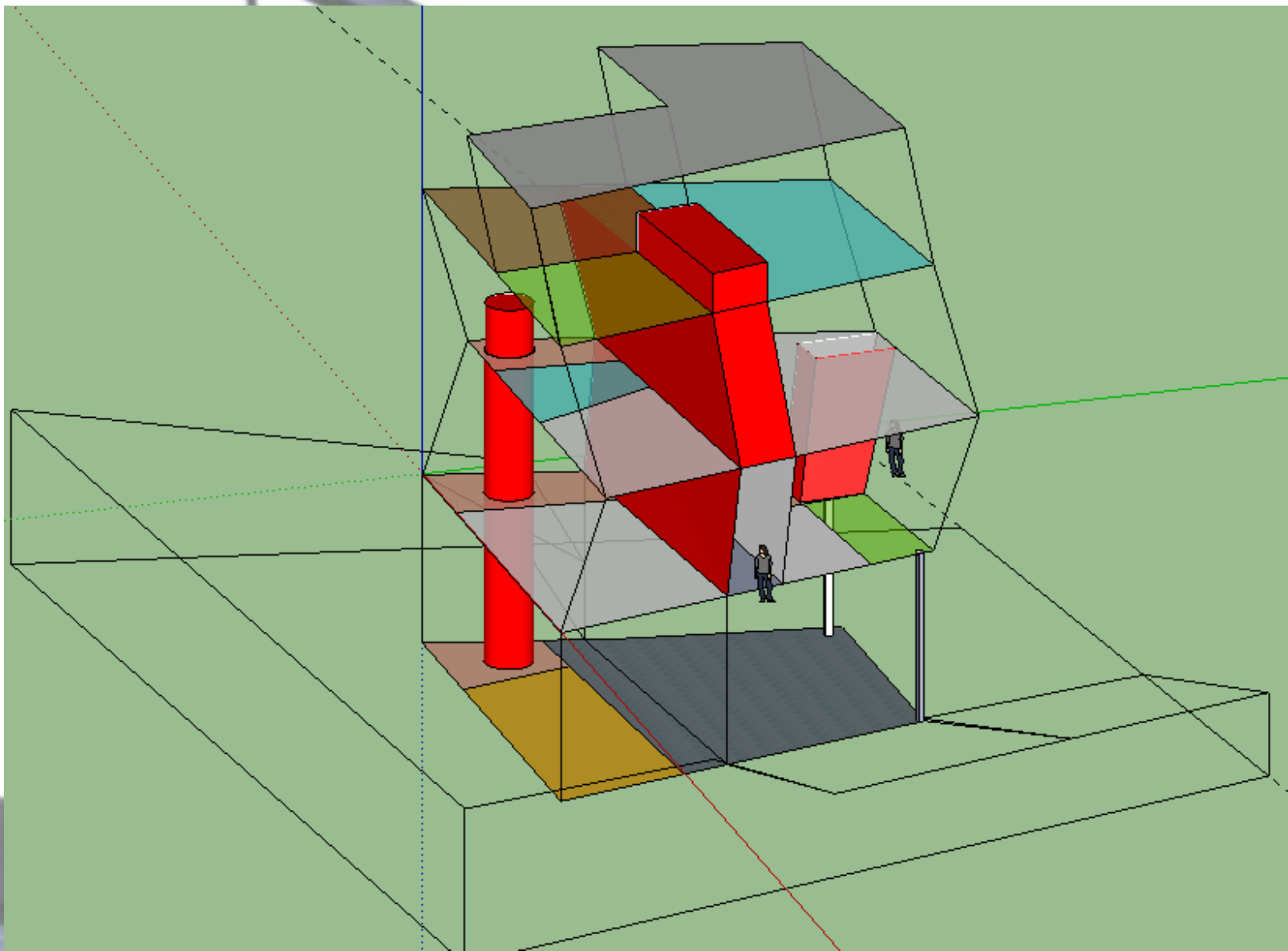


形体





功能分区

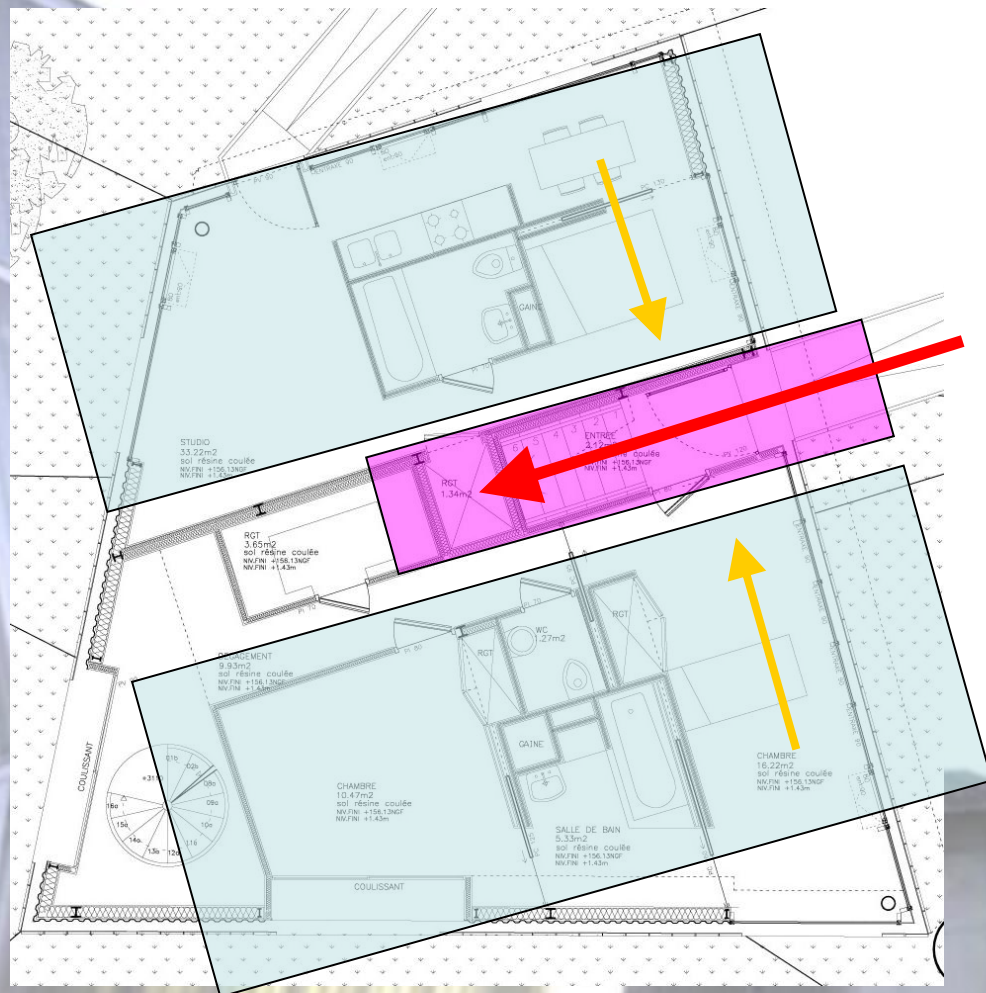


功能分区



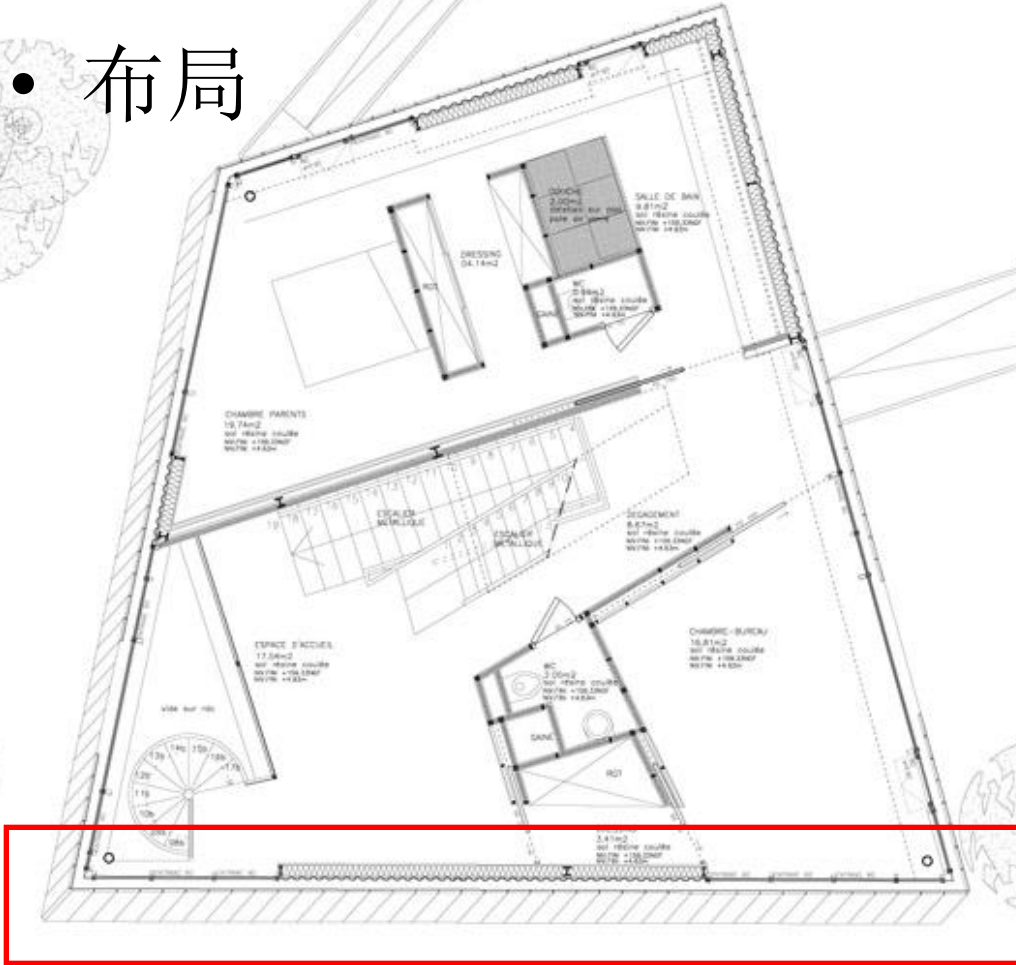
功能分区

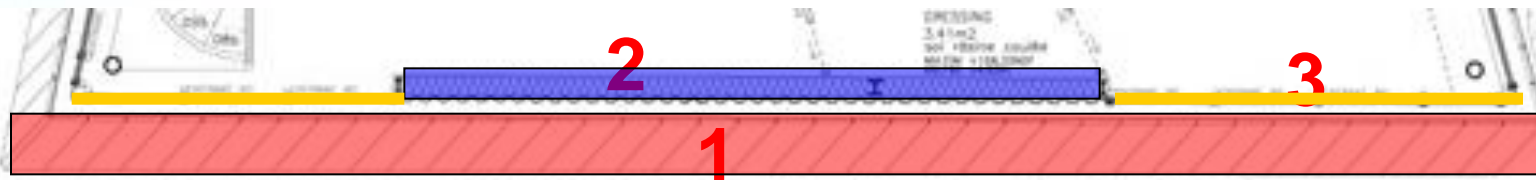
- 楼梯居中
- 一楼门直对楼梯



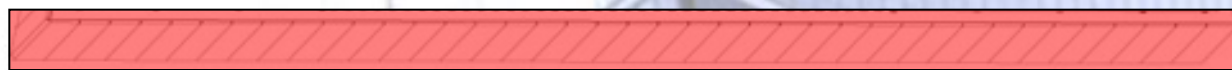
表面

- 布局

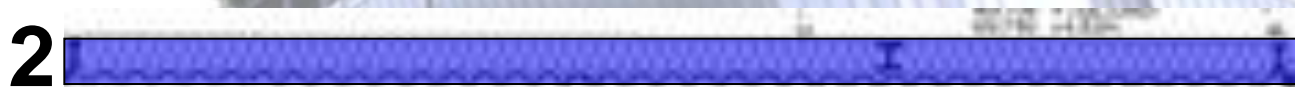




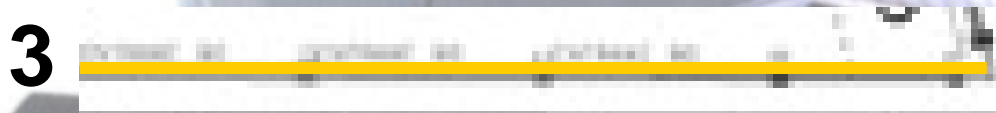
半透明玻璃外壳



半透明玻璃外壳（看线）



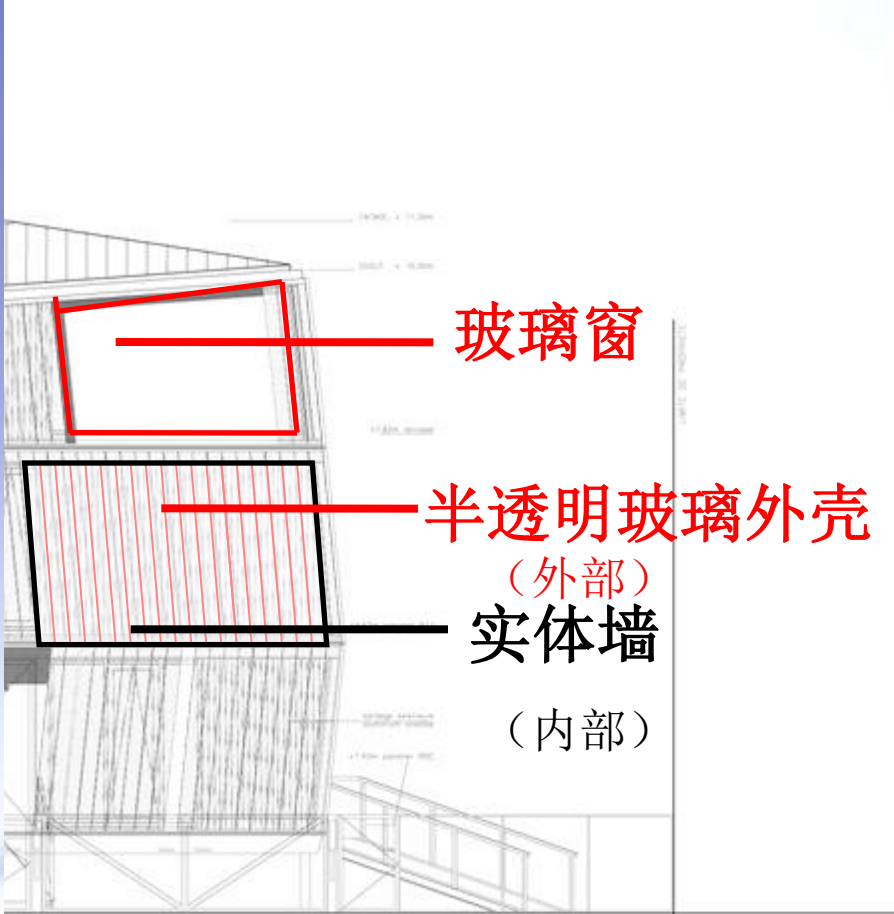
实体墙



玻璃窗

外

内



玻璃窗

半透明玻璃外壳

(外部)

实体墙

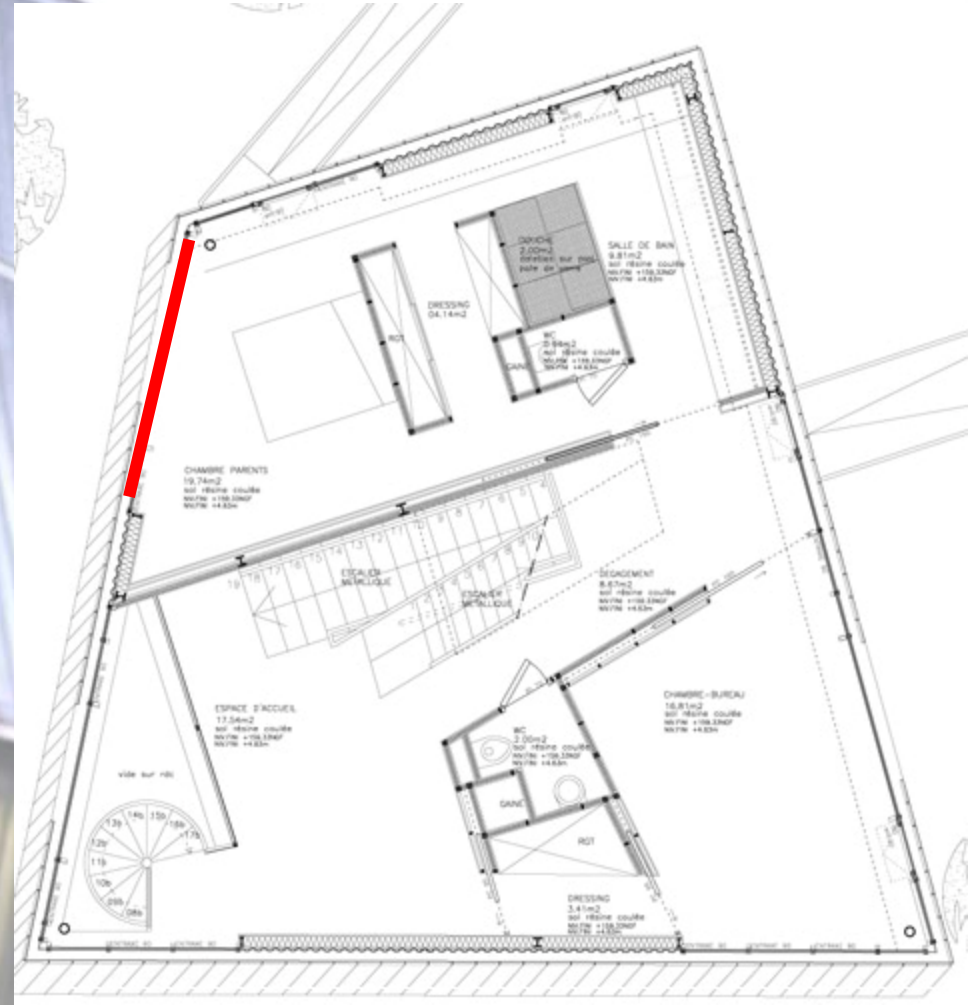
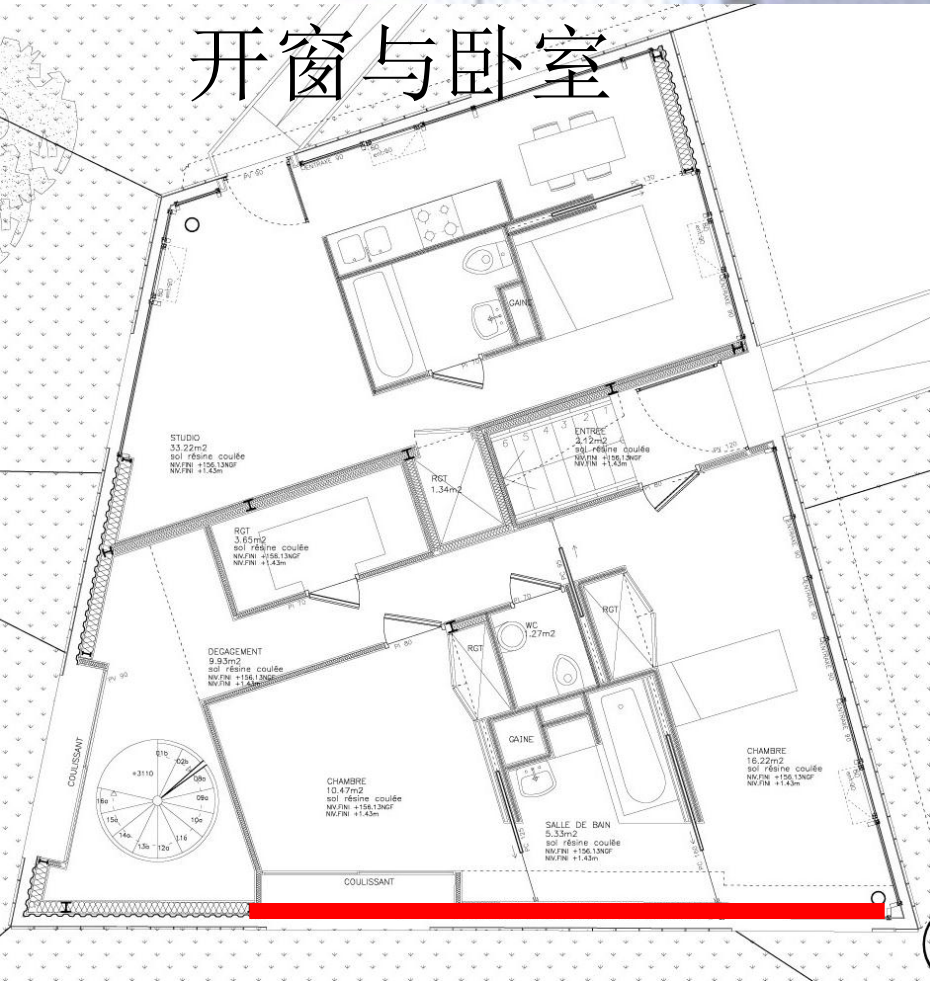
(内部)



表面

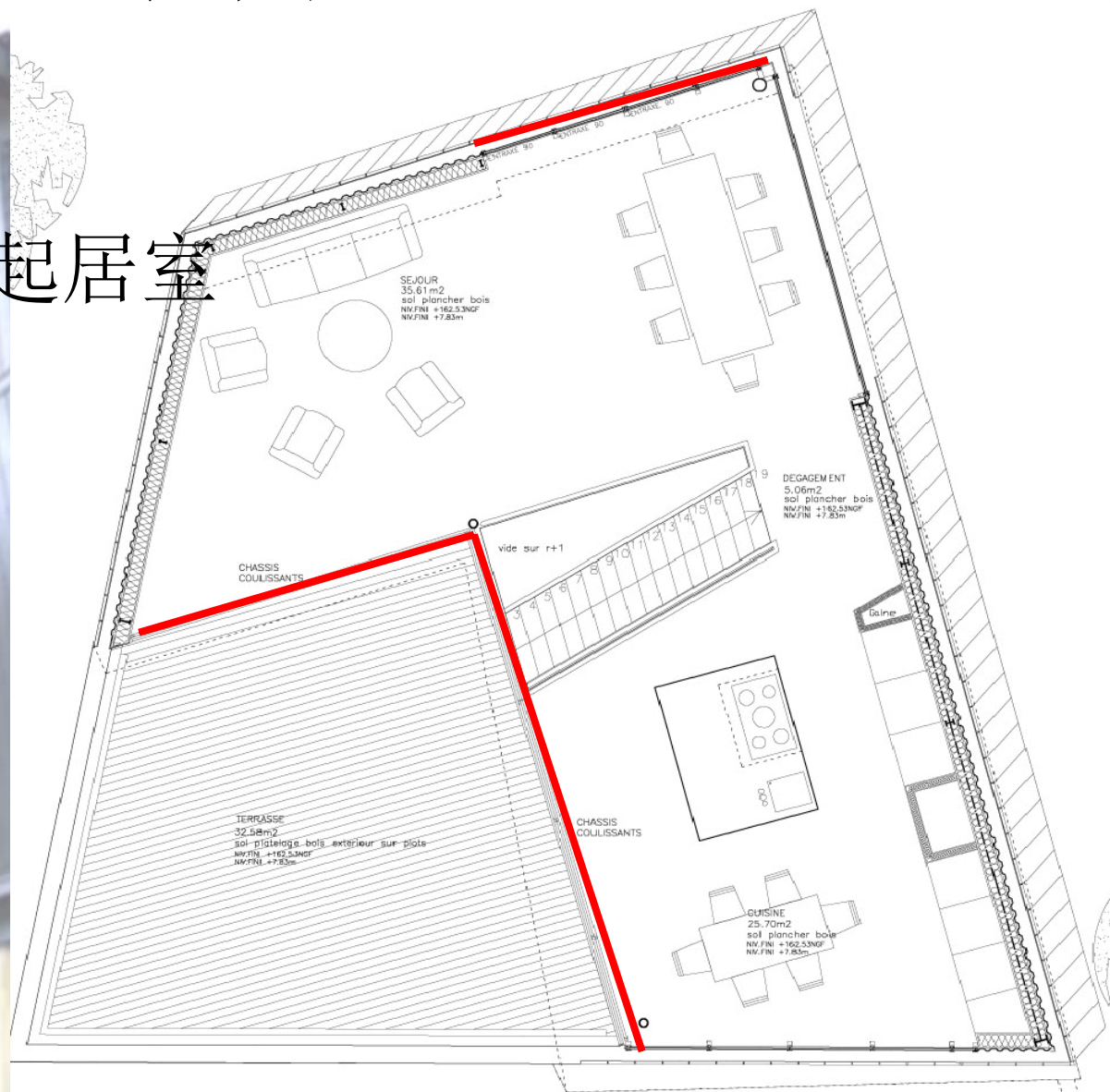
- 布局

开窗与卧室



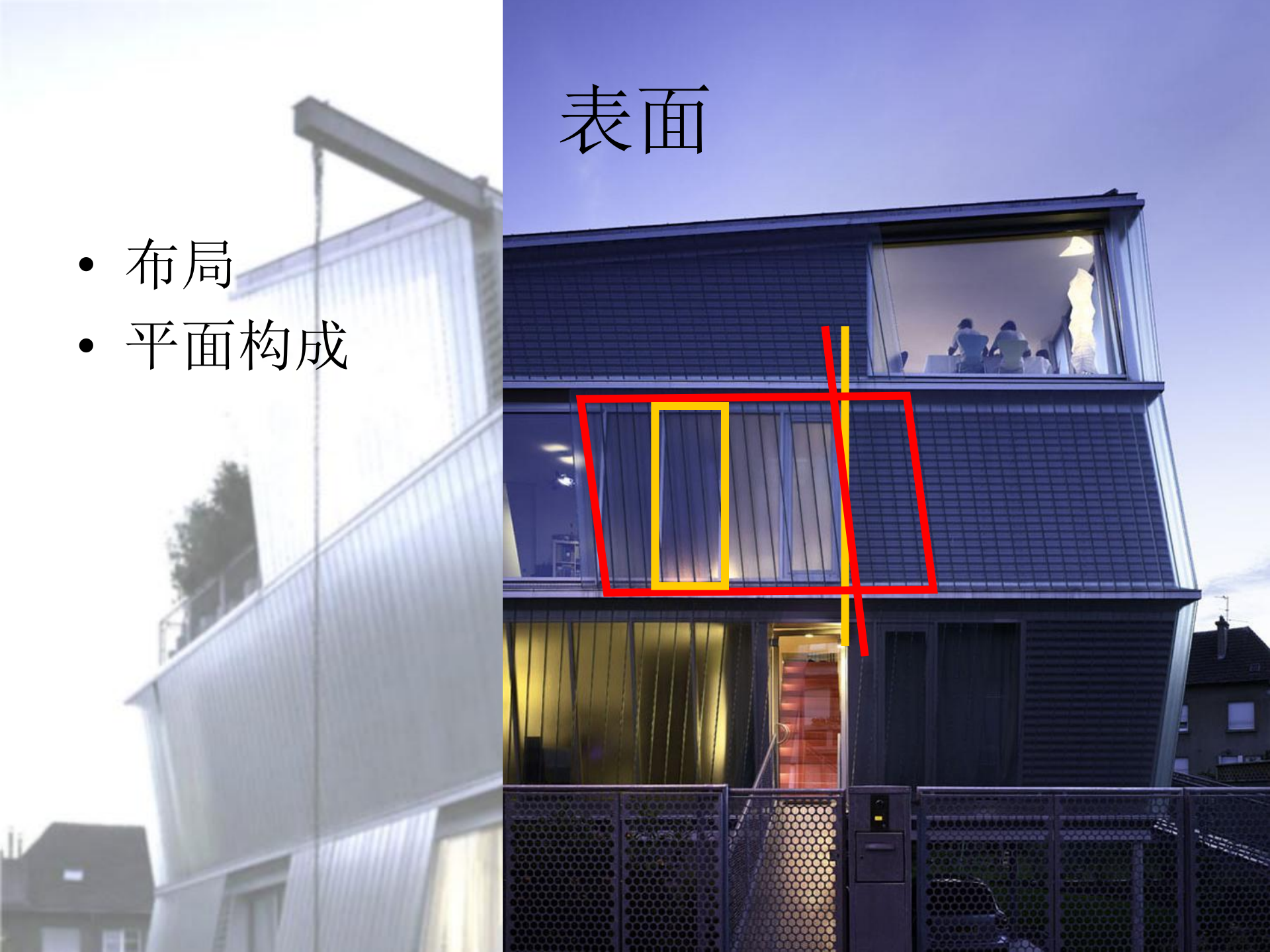
表面

- 布局
开窗与餐厅和起居室



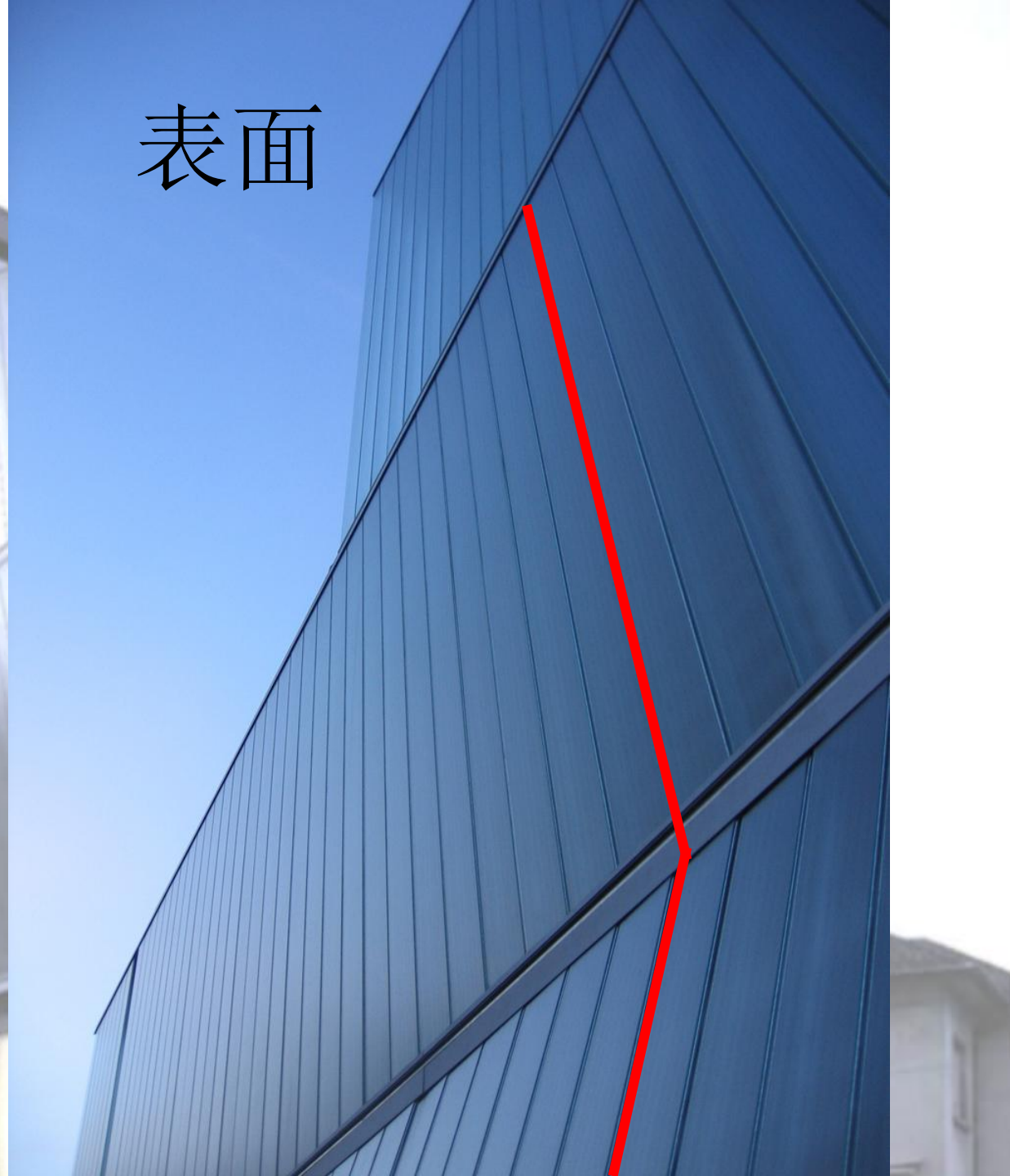
表面

- 布局
- 平面构成



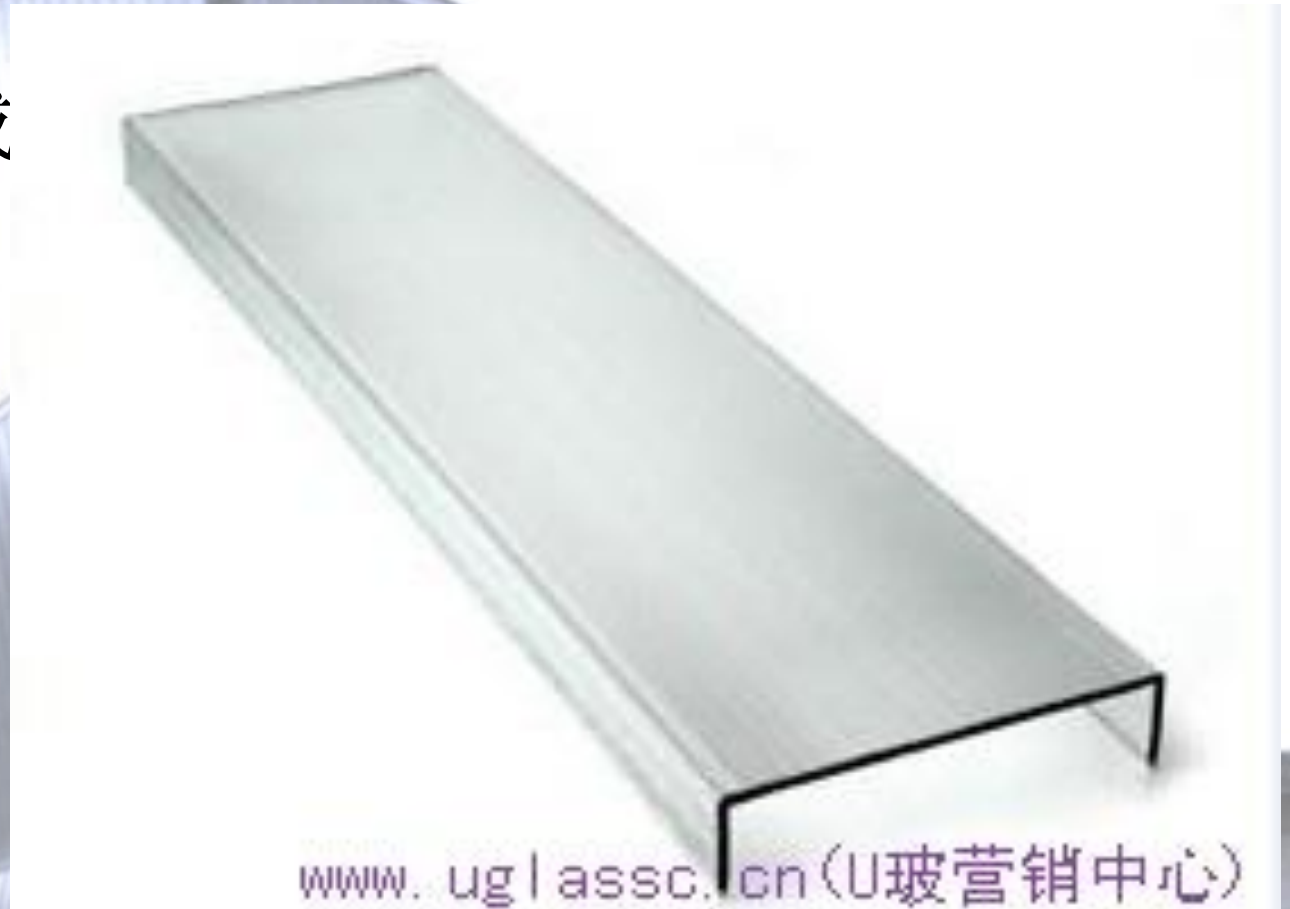
- 布局
- 平面构成

表面



表面

- 布局
 - 平面构成
 - 材料
- U型玻璃



表面

- 布局
 - 平面构成
 - 材料
- U型玻璃



表面

- 布局
- 平面构成
- 材料
- **profilit**



表面

- 布局
- 平面构成
- 材料
- **profilit**



表面

- 布局
- 平面构成
- 材料
- profilit



- 布局
- 平面构成
- 材料
- **profilit**

表面

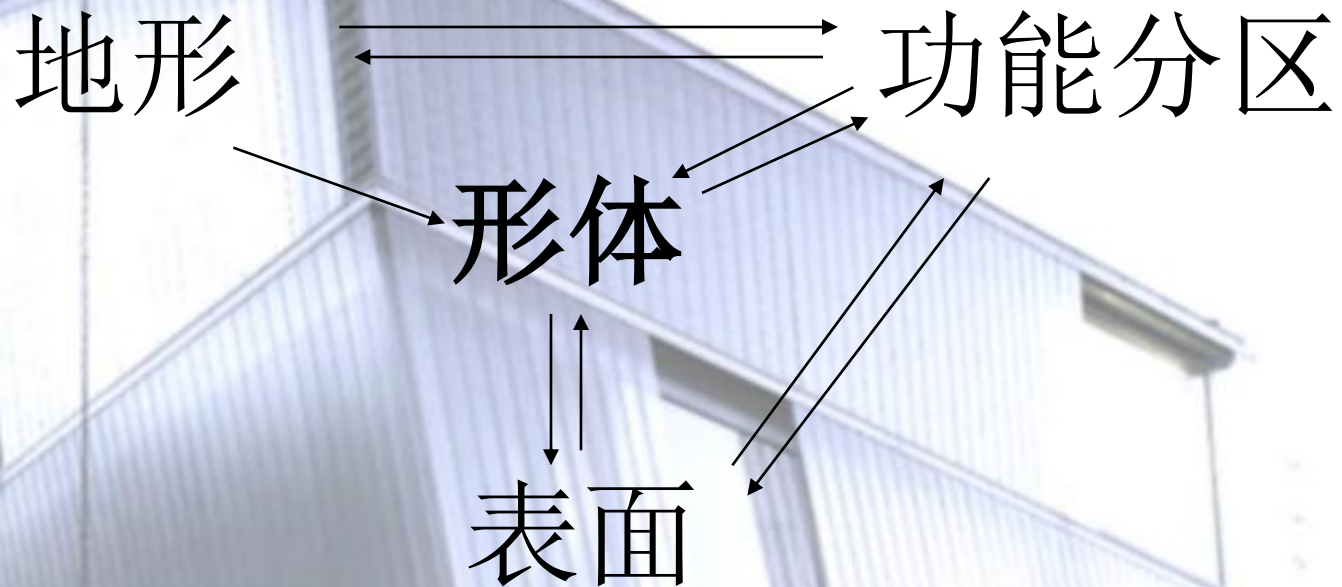


表面

- 布局
- 平面构成
- 材料
- **profilit**



小结与反思



设计思考的方式是什么，源泉来自哪里？

参考资料

- 《建筑空间组合论》
- 《世界建筑大师作品图析》
- <http://naoce.sjtu.edu.cn/teaching/arch/precedent>
- <http://peripheriques-architectes.com/maison-go>

Thank
You!