

# 案例分析

## Stone Hill Center

By Tadao Ando

# 分析内容

- 1. 场地条件
- 2. 功能分析
- 3. 形式组成
- 4. 空间要素
- 5. 个性特点

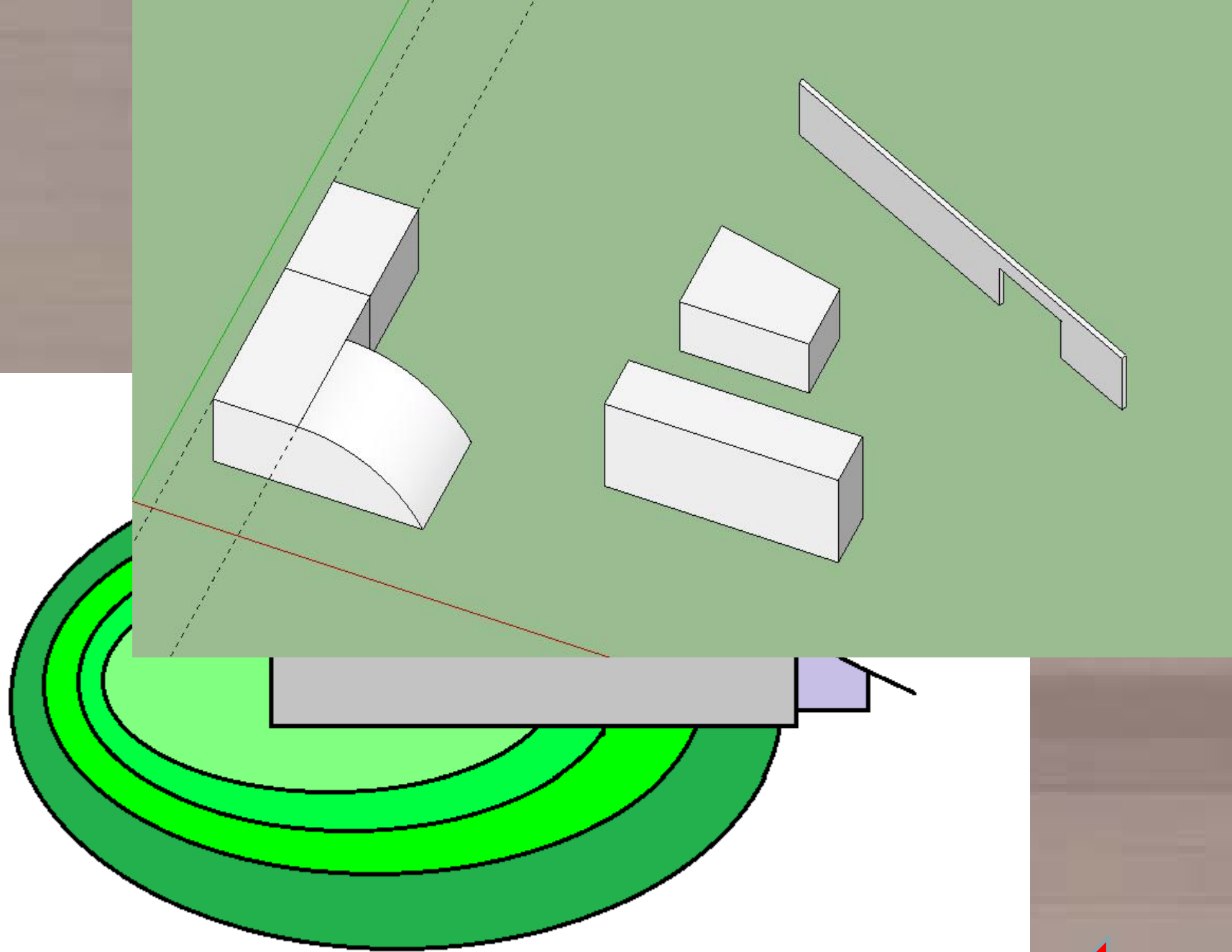
Stone Hill Center

Tadao Ando at the Clark

# 地形分析

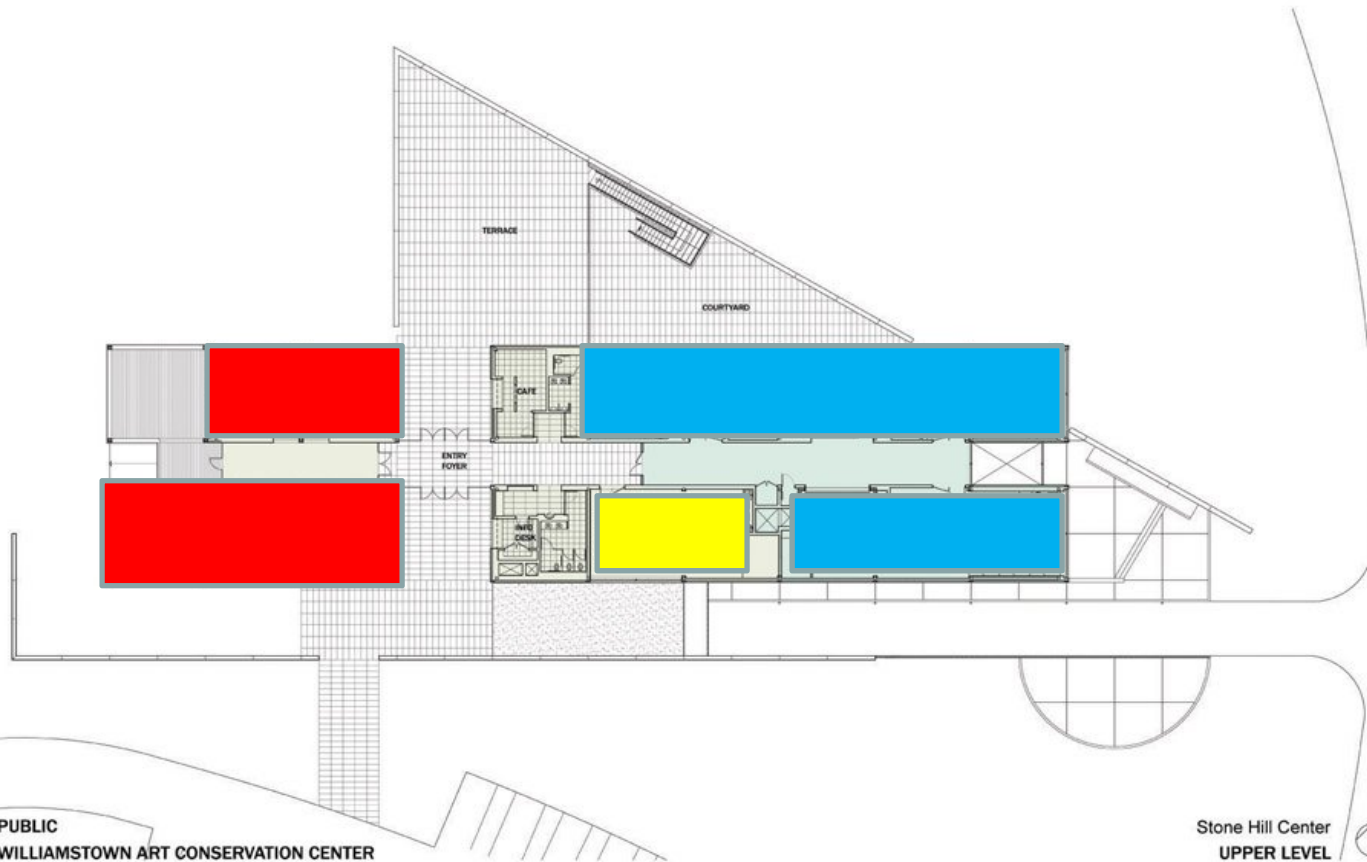
- 山坡地形 起伏 限制
- 处理方式 嵌入式



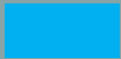


# 功能分区

## 二层平面



 Gallery

 Painting/Paper  
/Photo

 Meeting Room

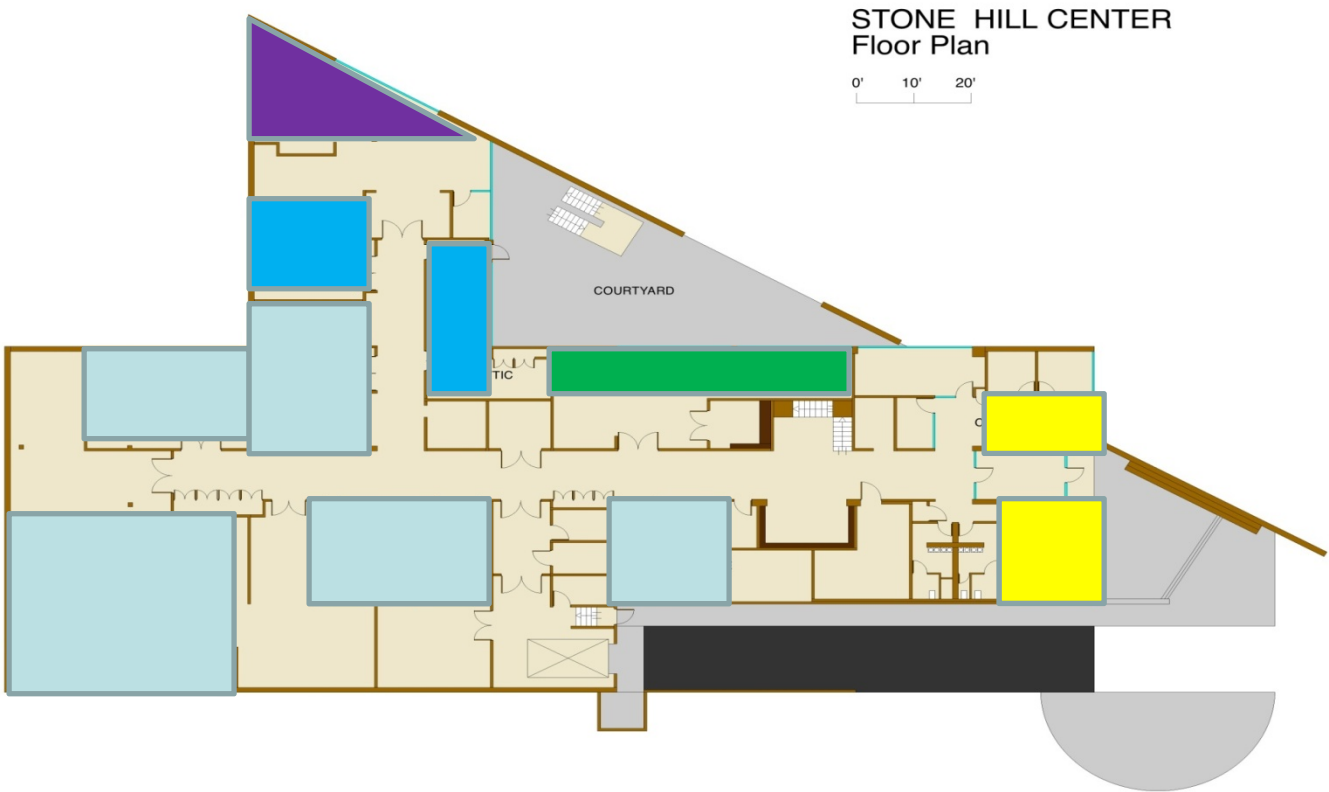
 PUBLIC  
 WILLIAMSTOWN ART CONSERVATION CENTER  
 SUPPORT

Stone Hill Center  
UPPER LEVEL  
ArchitectureWeek.com



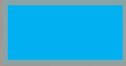
# 功能分区

一层平面



STONE HILL CENTER  
Floor Plan

0' 10' 20'



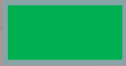
Painting/Paper  
/Photo



Office  
Meeting Room

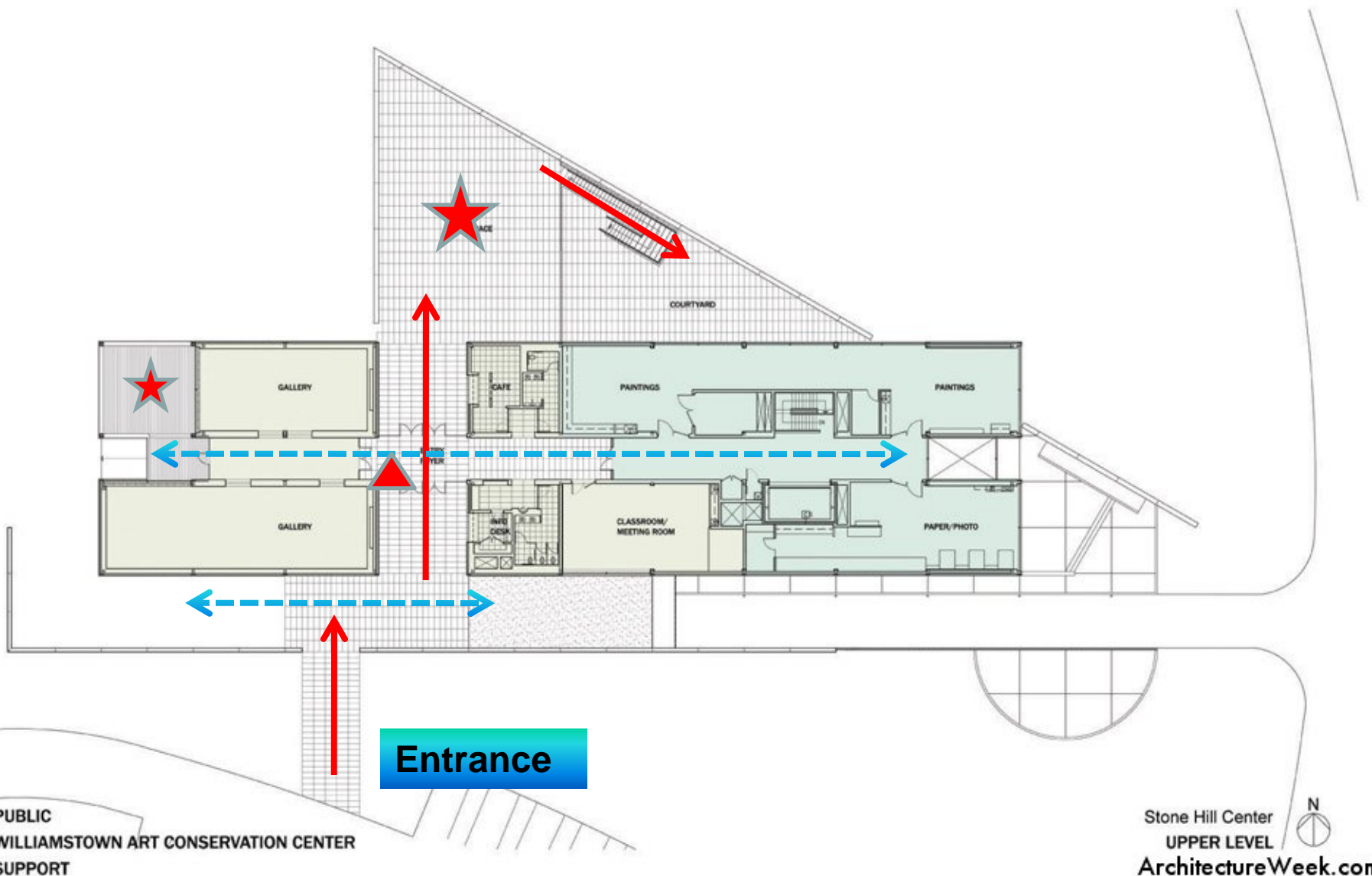


Furniture



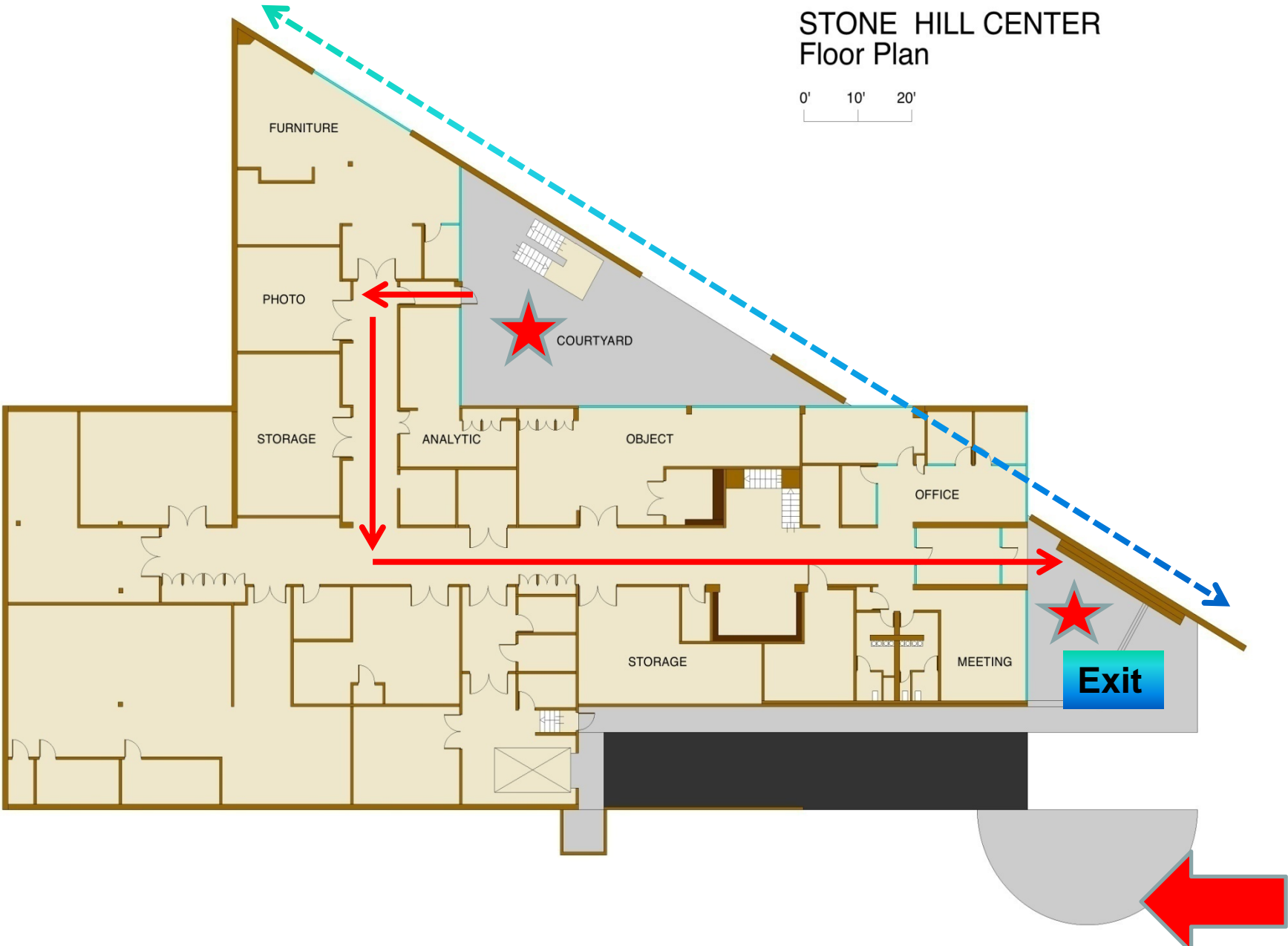
Analytic

# 流线分析



# STONE HILL CENTER Floor Plan

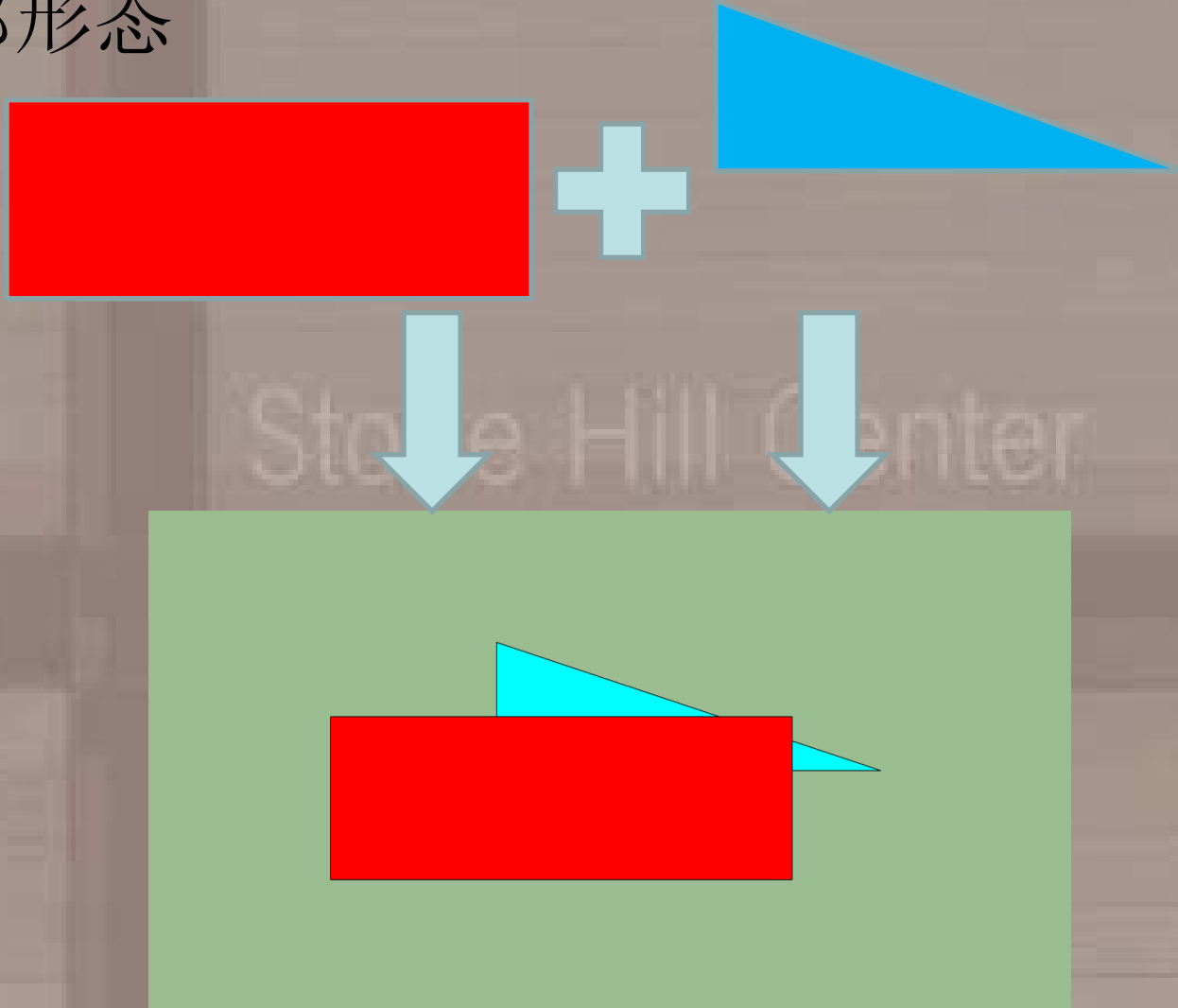
0' 10' 20'





# 简单几何形体

- 外部形态

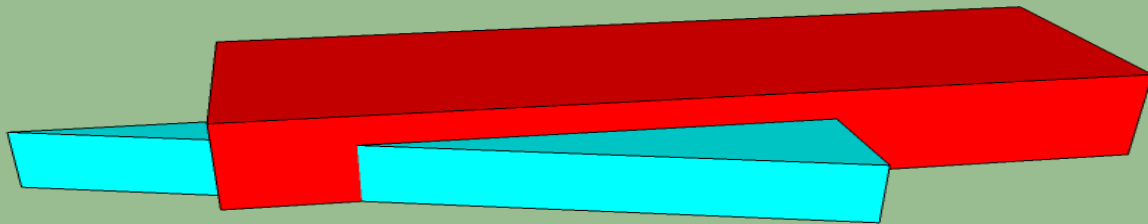
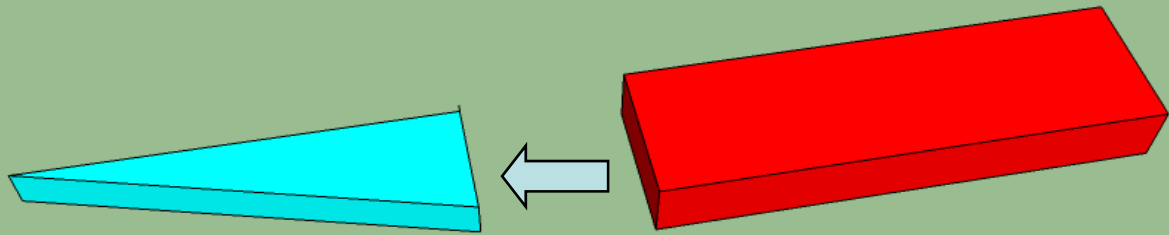


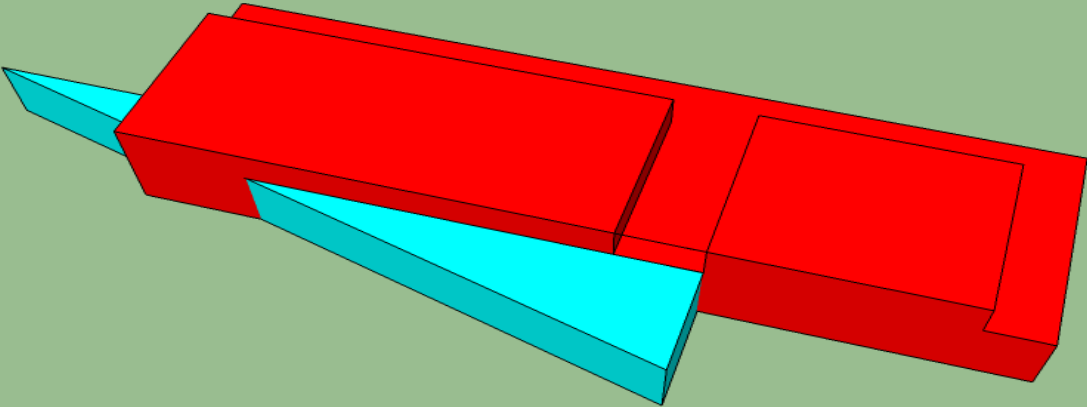
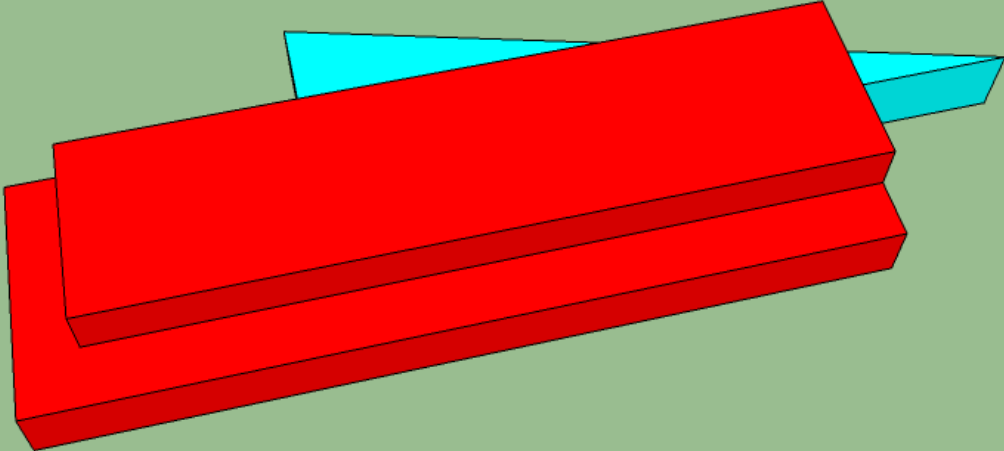
# 体块分析

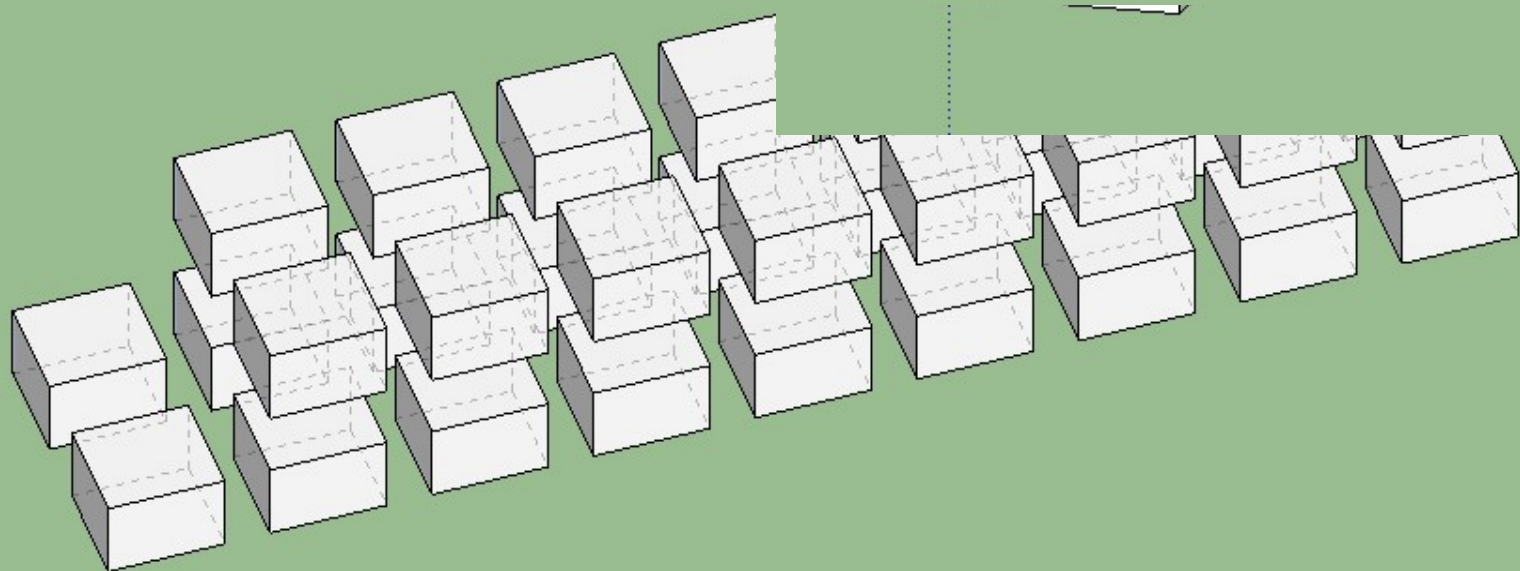
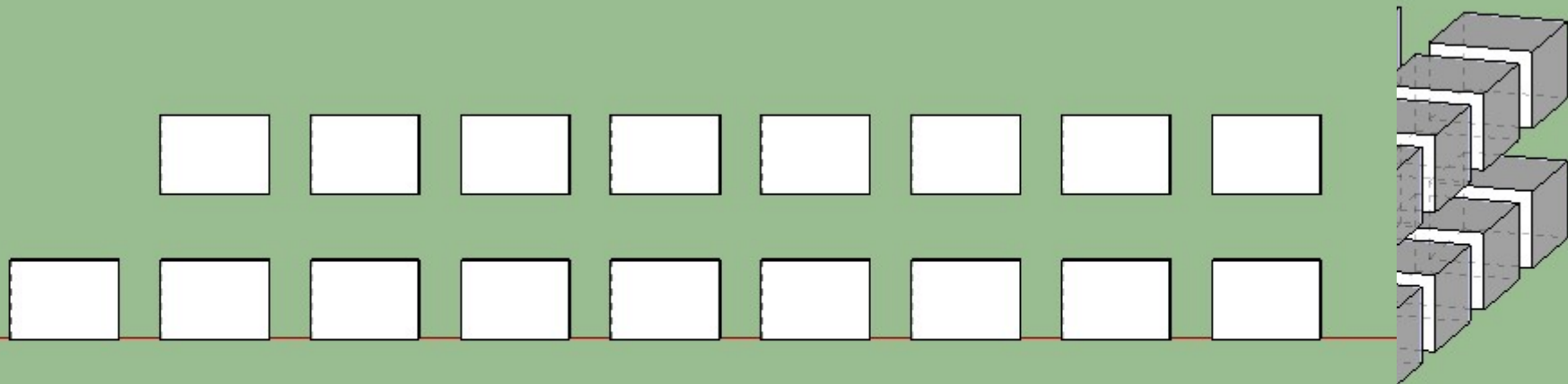
生成手法

消滅

穿插







三角形 稳定性  
长方形 秩序感



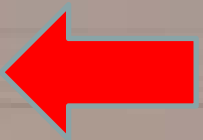
理性  
组合

- 几何图形简洁 抽象——感知理解 高度凝练
- 内部 对称布局 长廊
- 穿插的组合方式——多样性 变化



# 光线

- 局部细节——东立面
- 光与玻璃
- 光与墙体



# 虚实关系

- 体块的虚实
- 玻璃与混凝土的对比（相互影响  
柔和&深度





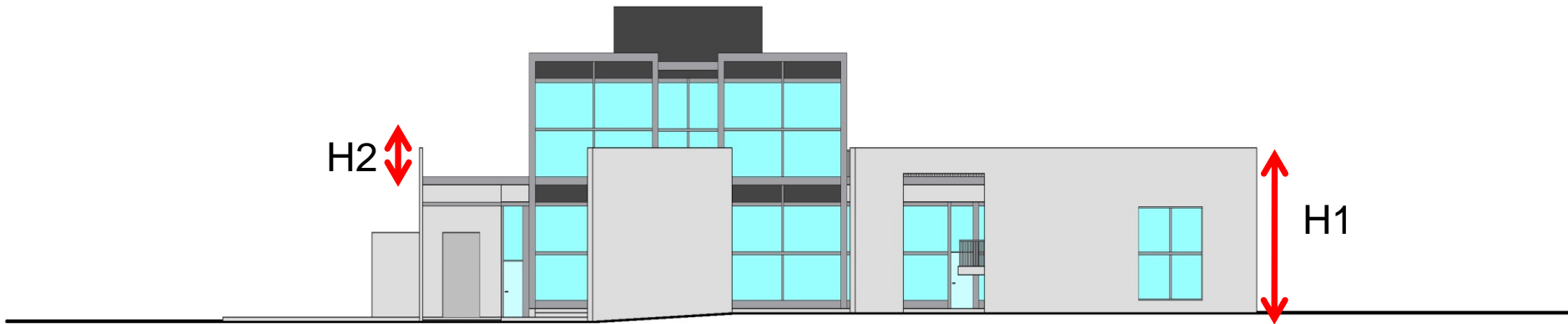
# 斜墙趣味

STONE HILL CENTER  
Elevation

0' 10' 20'

- 外向性
- $H1=6.2\text{m}$   $H2=2.0\text{m}$

建筑物高度 人的高度



# 明暗结合

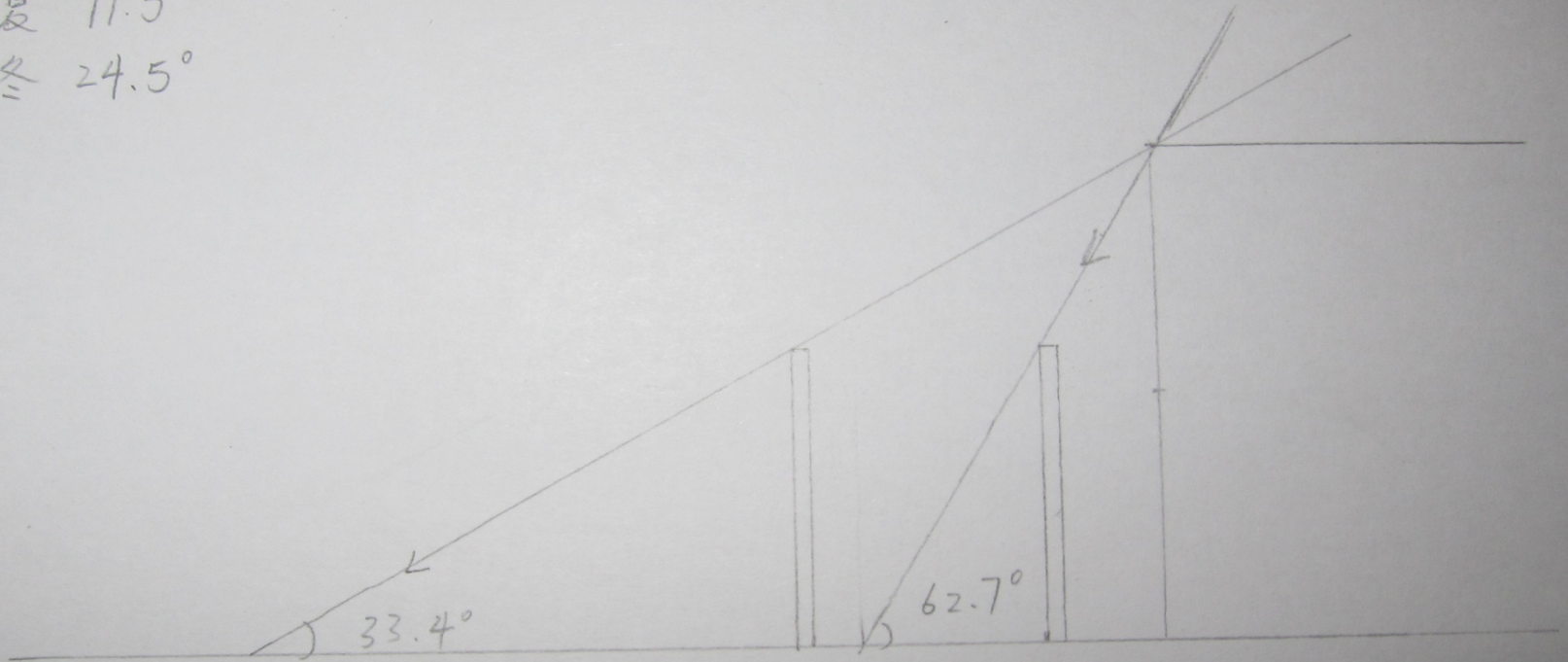


# 斜墙趣味

- 对光线的产生影响

夏  $71.5^\circ$   
冬  $24.5^\circ$

1:200



# 谢谢观赏

Stone Hill Center

Tadao Ando at the Clark