



范例分析

# TDA House

---

汇报人：赖吉婷 李睿莹  
指导老师：王韧 秦丹尼  
张清 刘士兴

# 建筑概况

设计师：Eduardo Cadaval 和  
Clara Solà-Morales

建筑类型：住宅建筑

位置：墨西哥瓦哈卡 埃斯孔迪多港

建筑面积：350平米

项目年限：2005-2006





zhulong.com



zhulong.com



zhulong.com



# 设计理念

“How to become modern and get back to origins; how to relive a drowsy old civilization and take part in a universal one?”

——*Paul Ricoeur, Universal Civilization and National Cultures, 1961*



Eduardo Cadava and Clara Solà-Morales managed to solve the paradox. The big concrete walls, a neutral background against which the surrounding tropical plants stand out, seem to answer on the architects' behalf.

—[www.ca-so.com](http://www.ca-so.com)



# 详细分析

## 出发点



- High temperatures, saltpeter, and unskilled labor force were the conditions to decide that this house should be built in concrete. This became the project's starting point, and the tectonic and morphological possibilities of the material followed on the formal definition of the proposal.

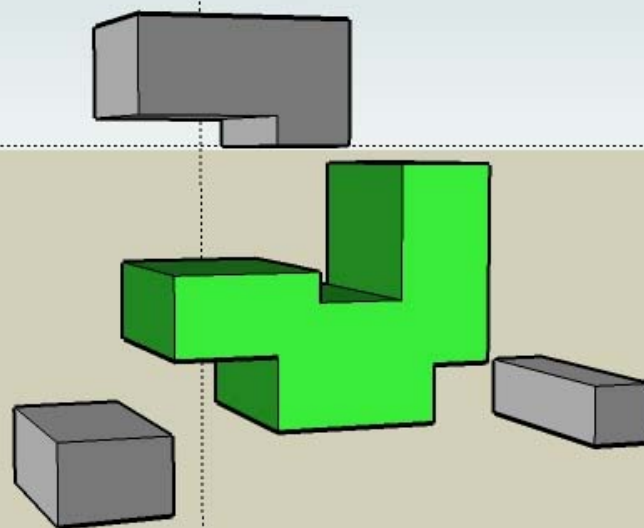
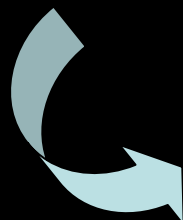
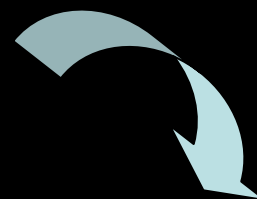
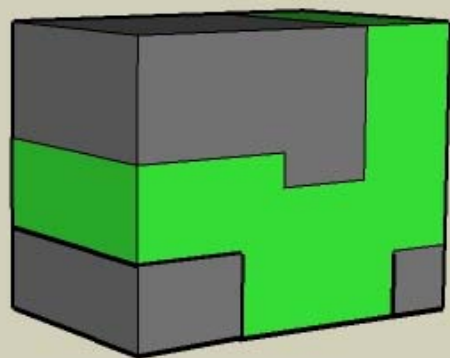
- 温度高，硝石，和非熟练劳动力的条件决定了这个建筑应该用混凝土来建造。

这是建筑的出发点。  
材料和外形决定了建筑物的最初形态。



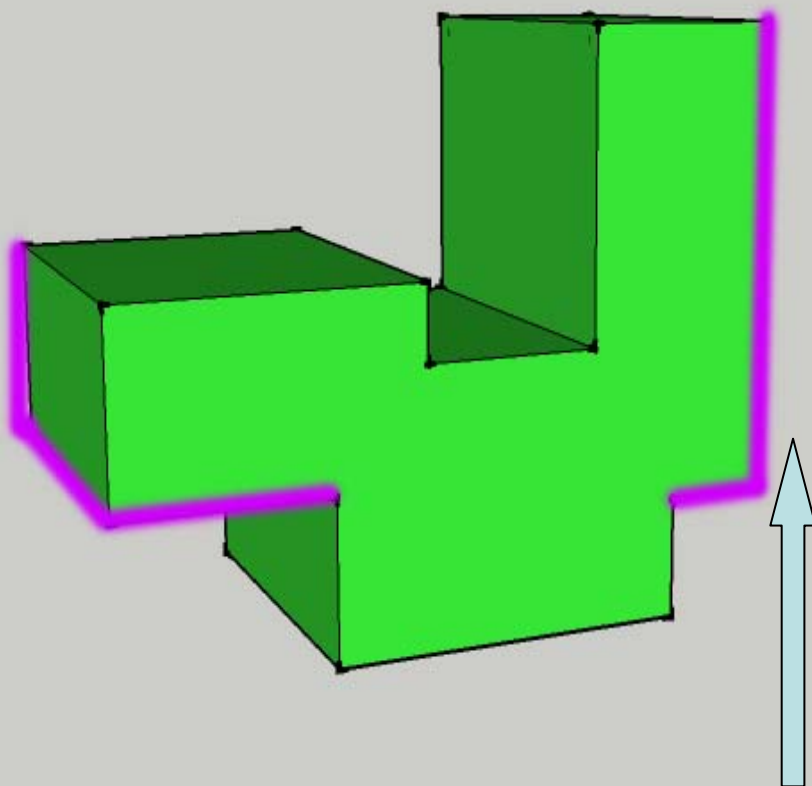
# 详细分析

## 体块分析



# 详细分析

## 体块分析

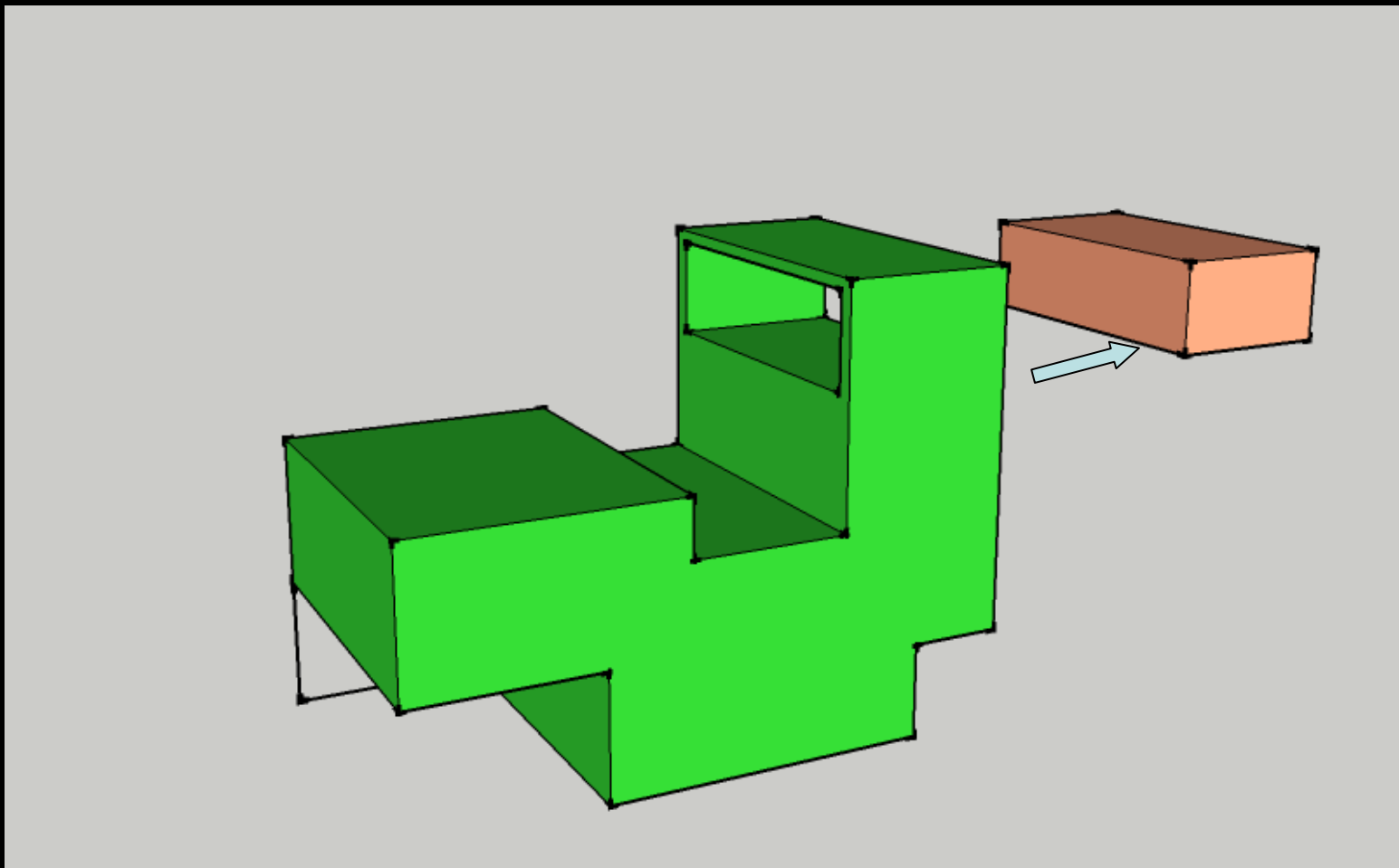


两个重要的悬臂，尺寸分别为**5米**和**2.5米**



# 详细分析

## 体块分析



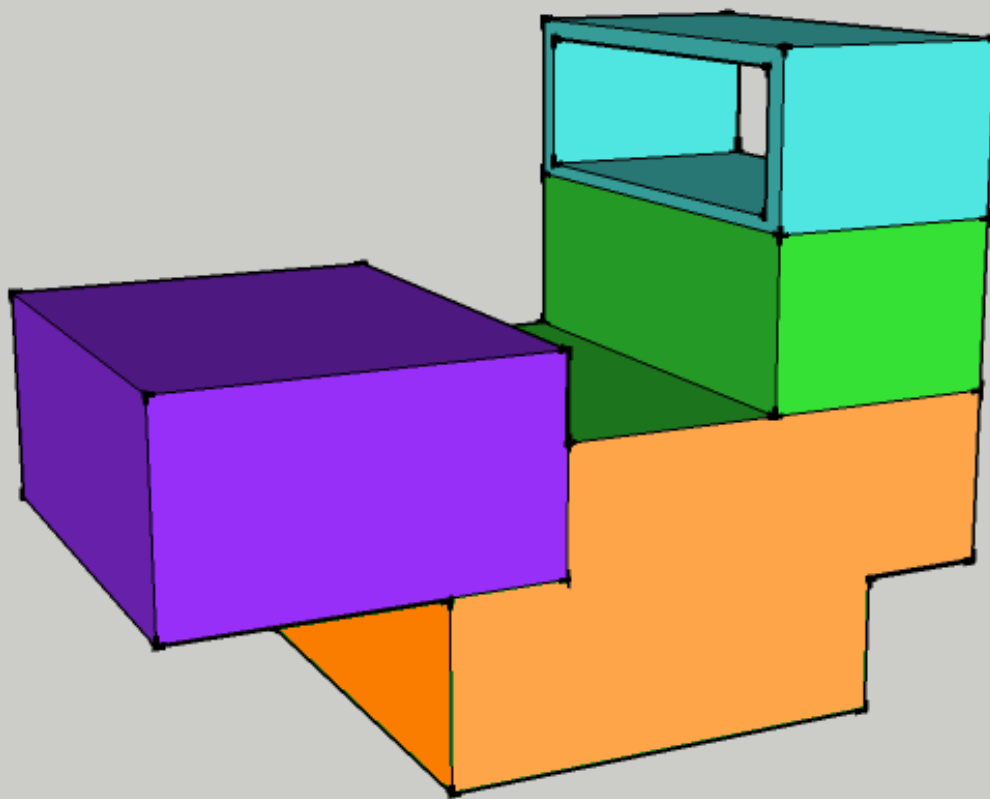
“interrupts its opacity at strategic points”

在战略上中断了其不透明性，使虚实结合，达到均衡的美感。



# 详细分析

## 体块分析

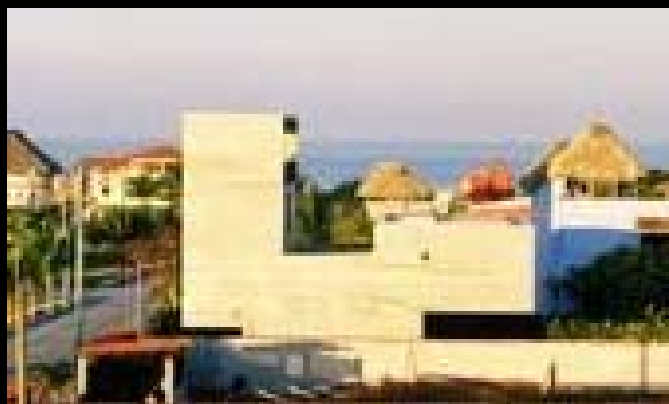


建筑的三个主要的部分:露台, 二层卧室, 中心区域

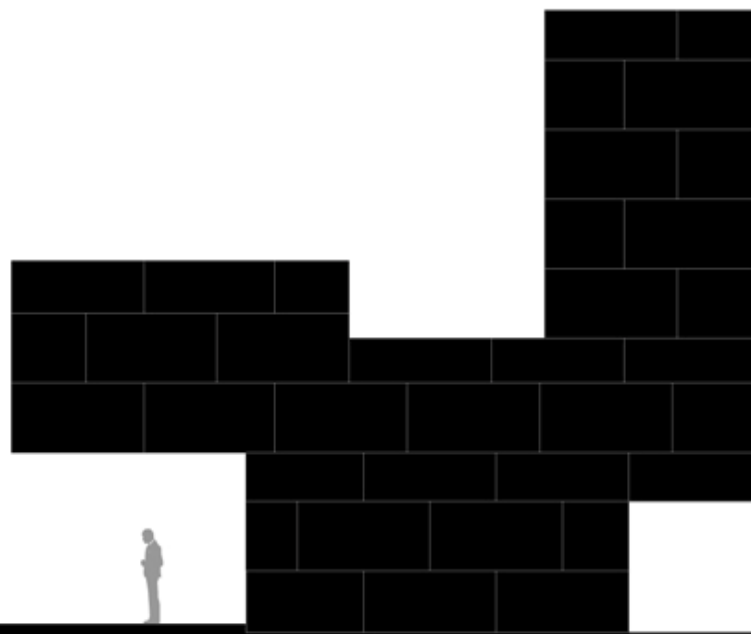


# 详细分析

## 二维分析

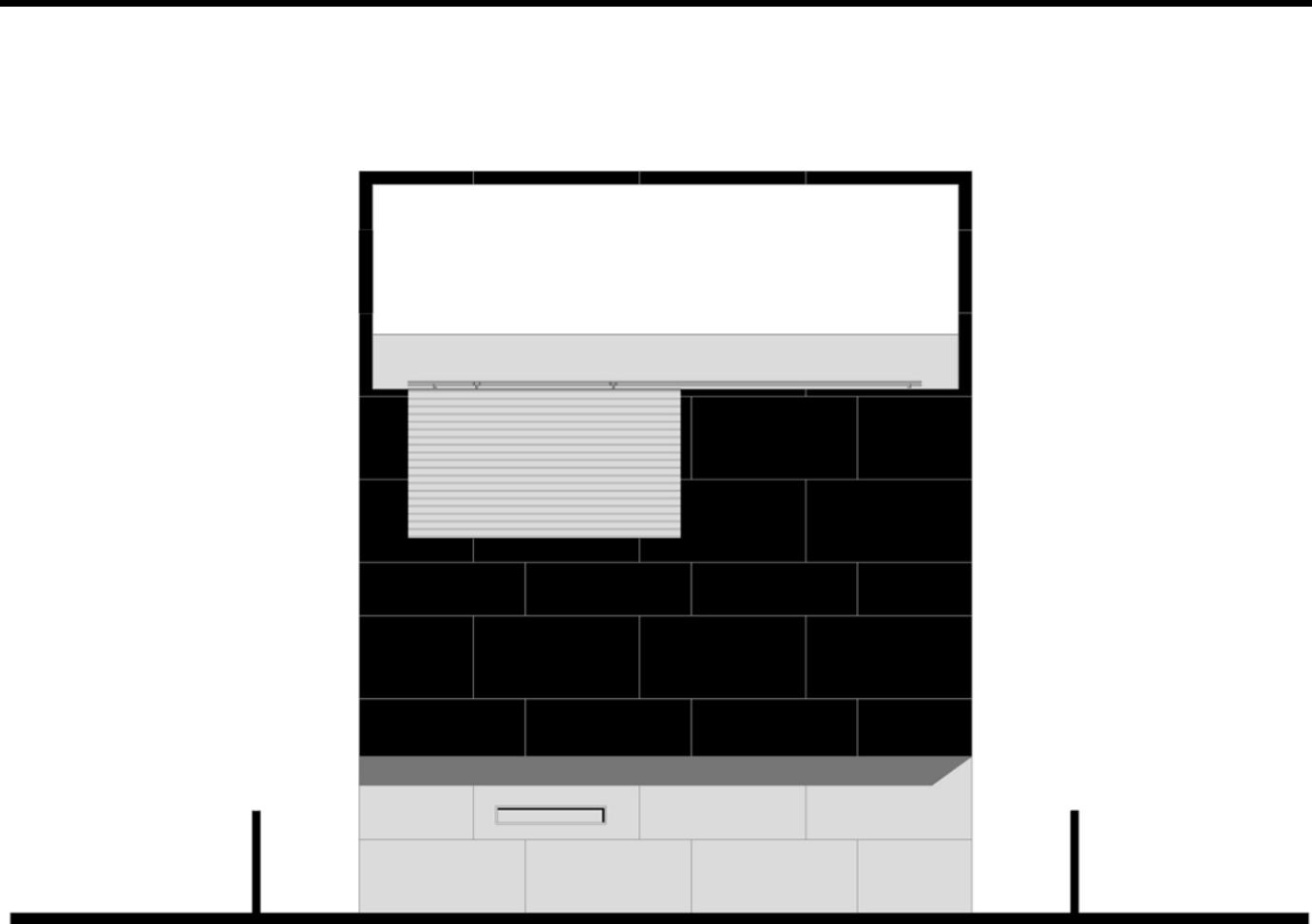


側立面



# 详细分析

二维分析



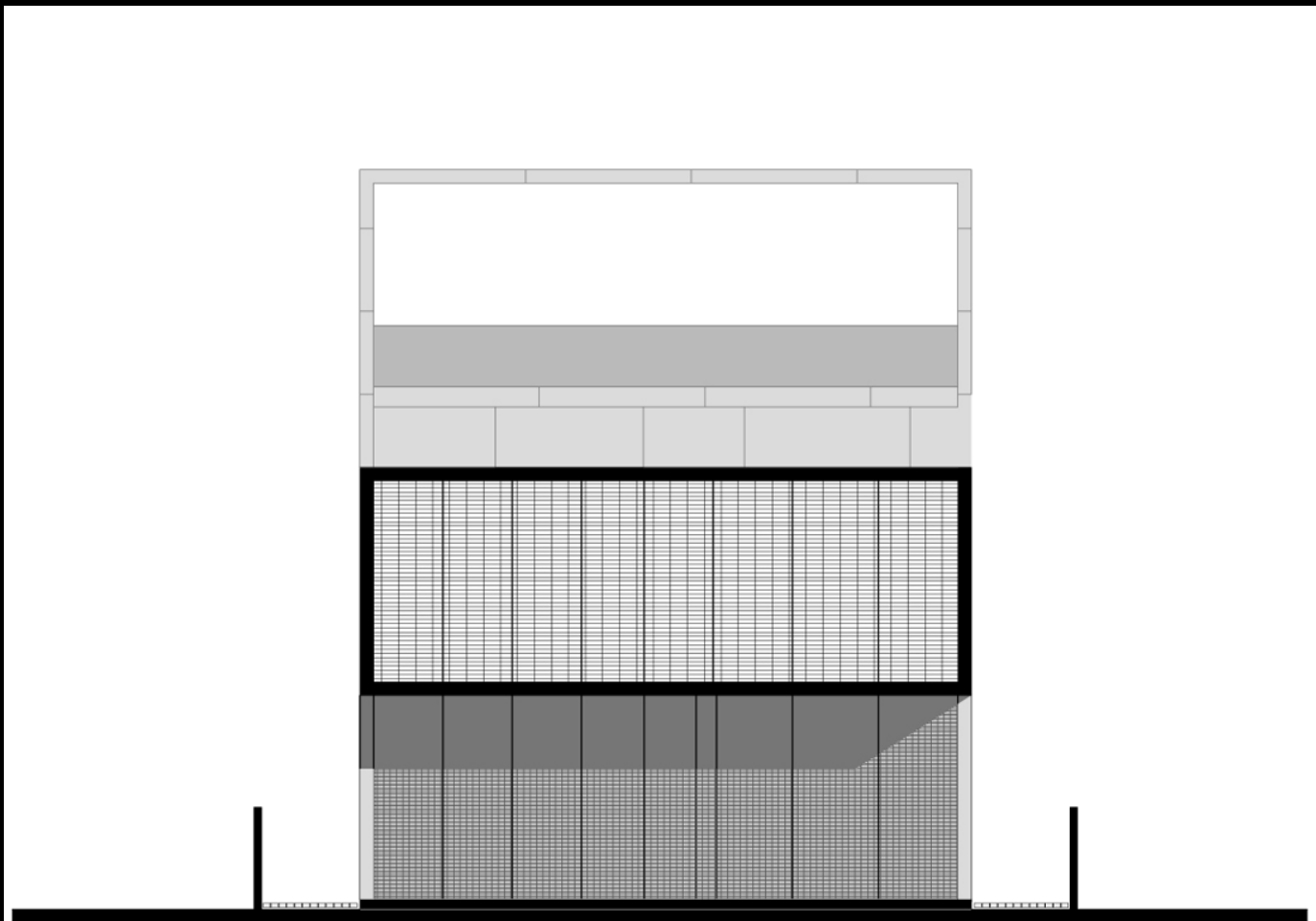
ALZADO SUR

南立面



# 详细分析

二维分析



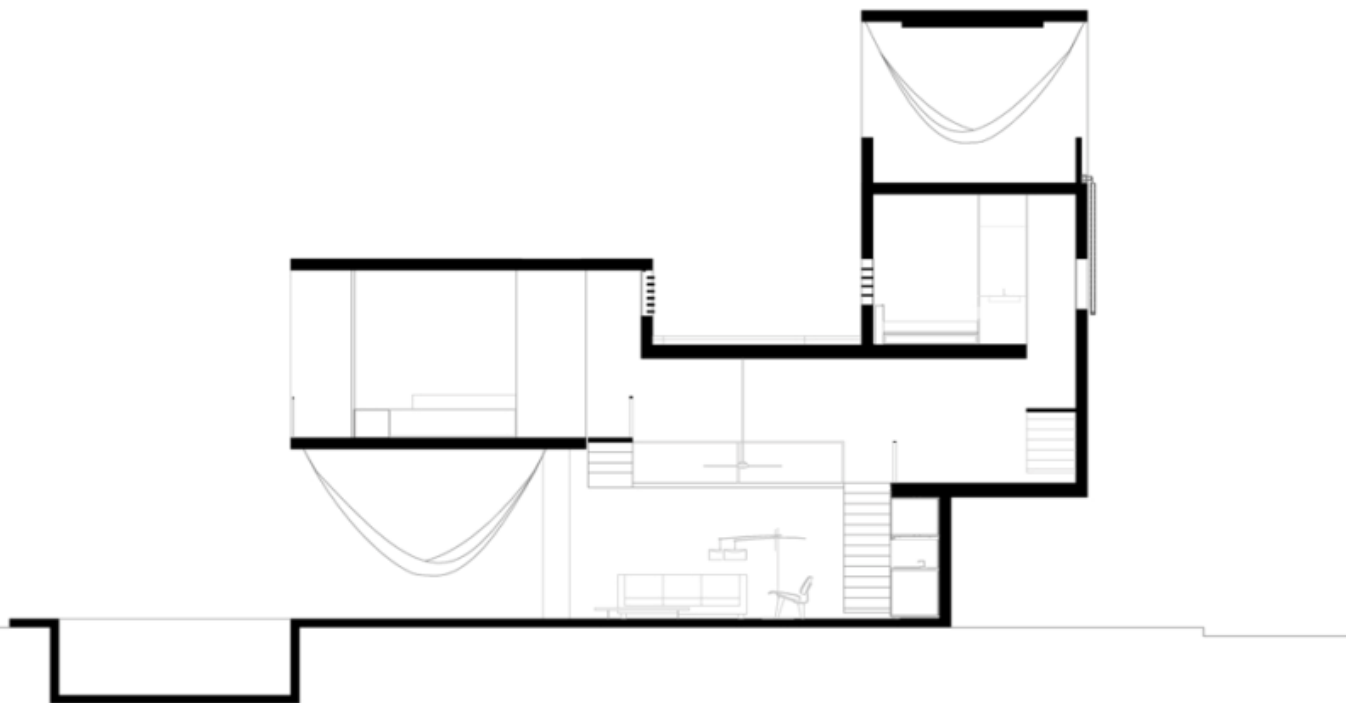
ALZADO NORTE

北立面



# 详细分析

二维分析



剖面图

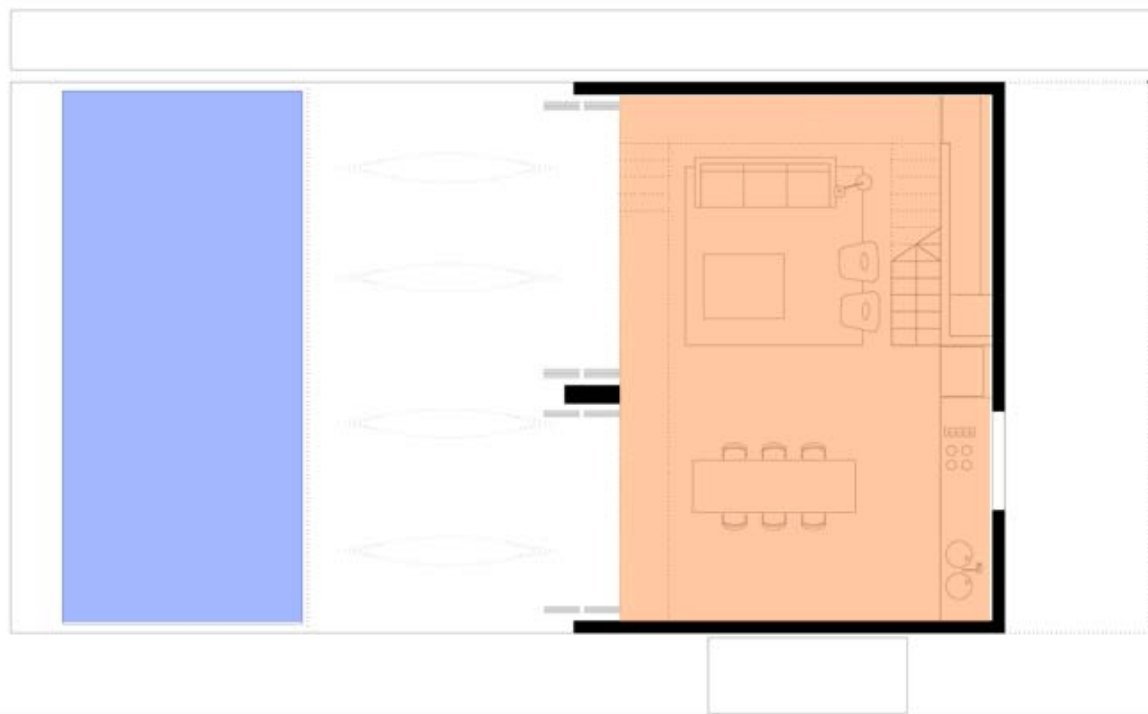


# 详细分析

## 二维分析

起居室

游泳池



PLANTA BAJA

一层平面



# 详细分析

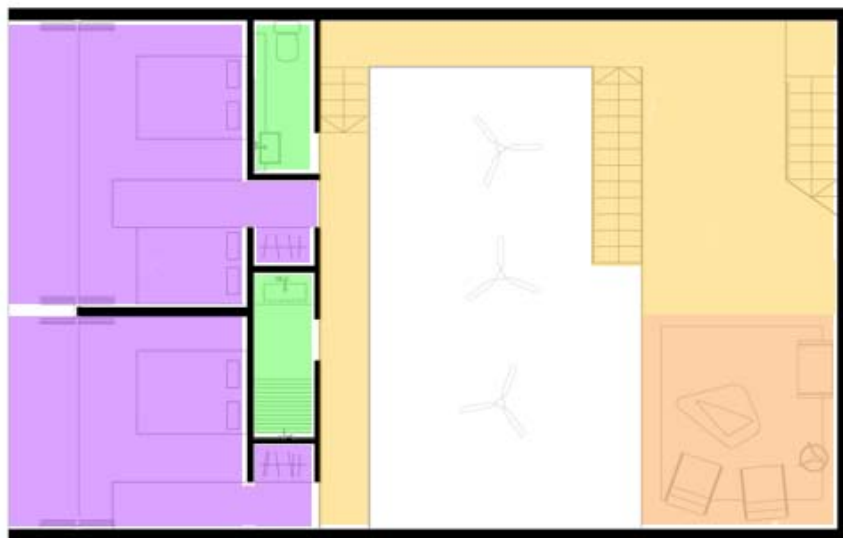
## 二维分析

卧室

洗漱室

起居室

走道空间



PRIMER PISO

## 二层平面



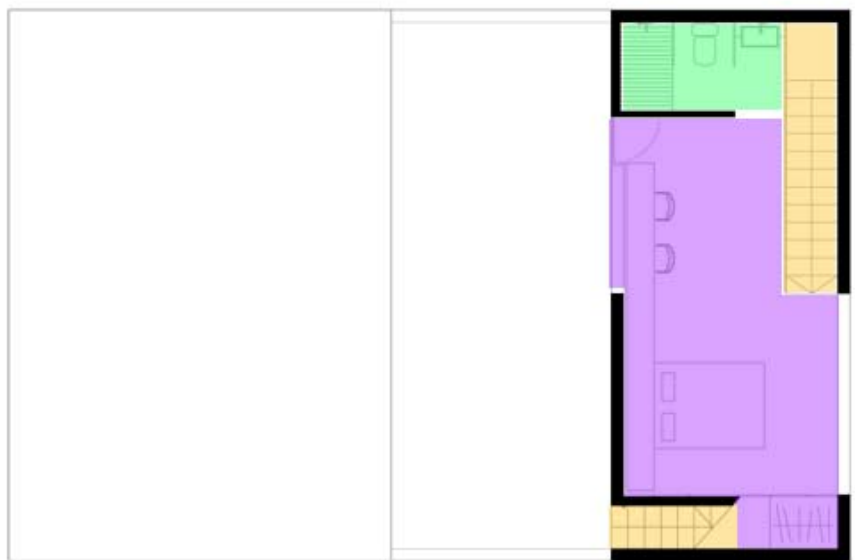
# 详细分析

## 二维分析

卧室

洗漱室

走道空间



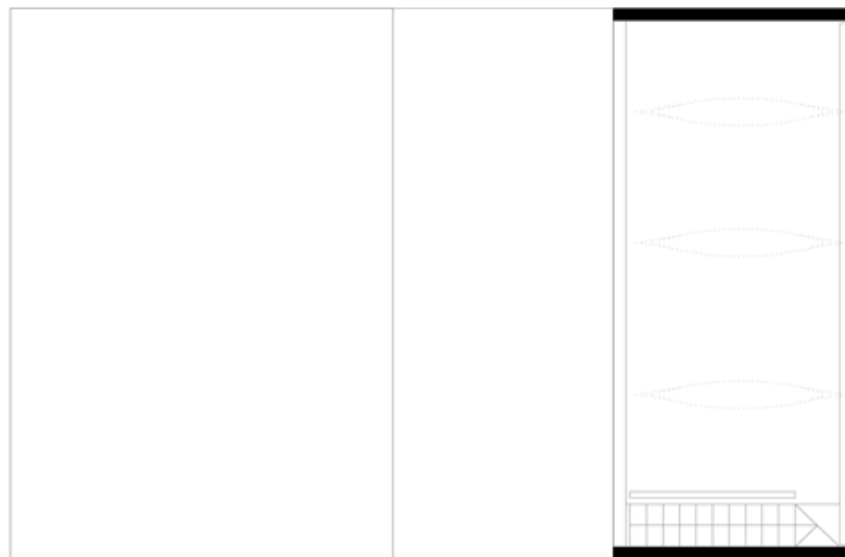
SEGUNDO PISO

# 三层平面



# 详细分析

## 二维分析



ESC 1:200



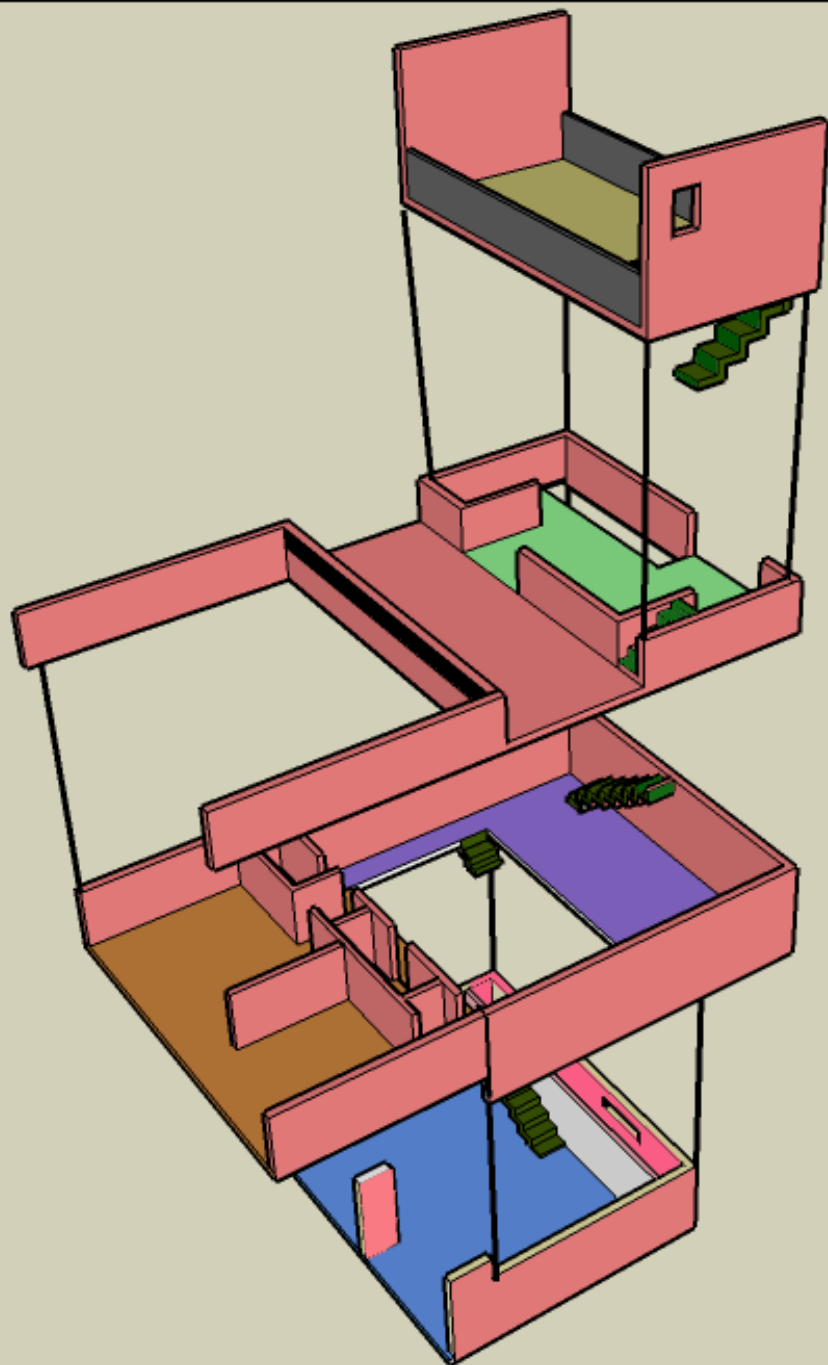
TERRAZA

顶层平面



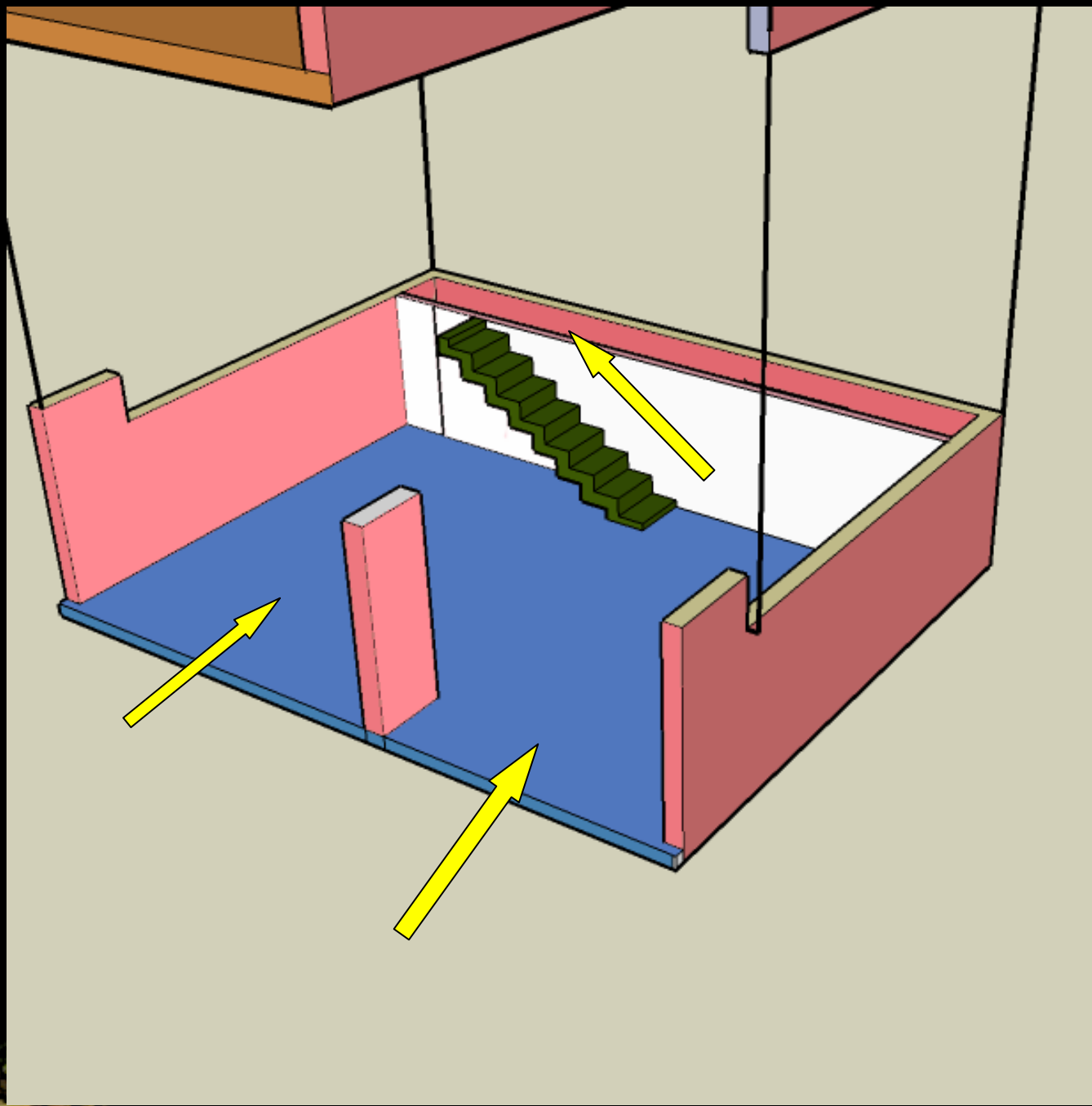
# 详细分析

## 三维分析



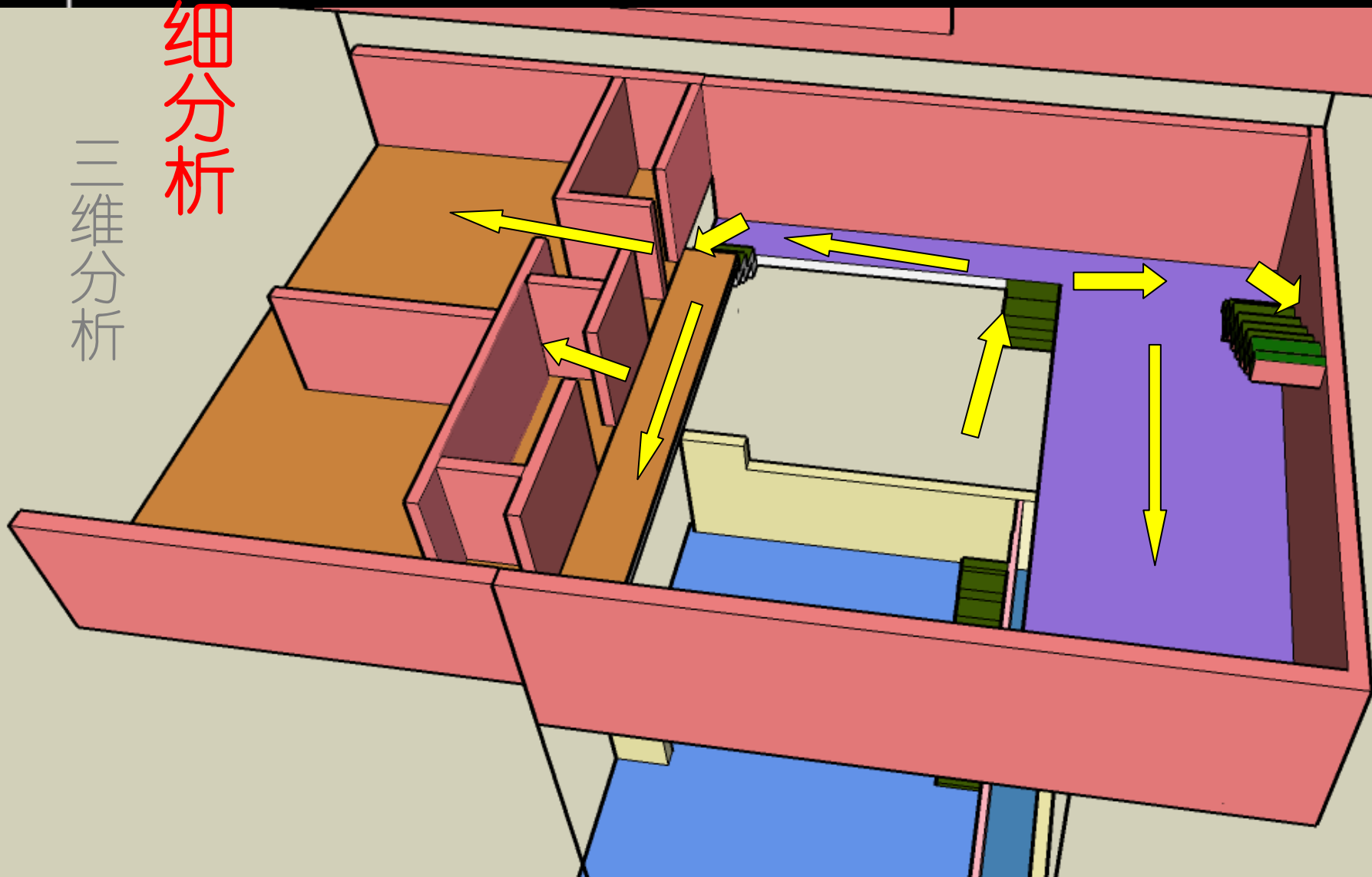
# 详细分析

三维分析



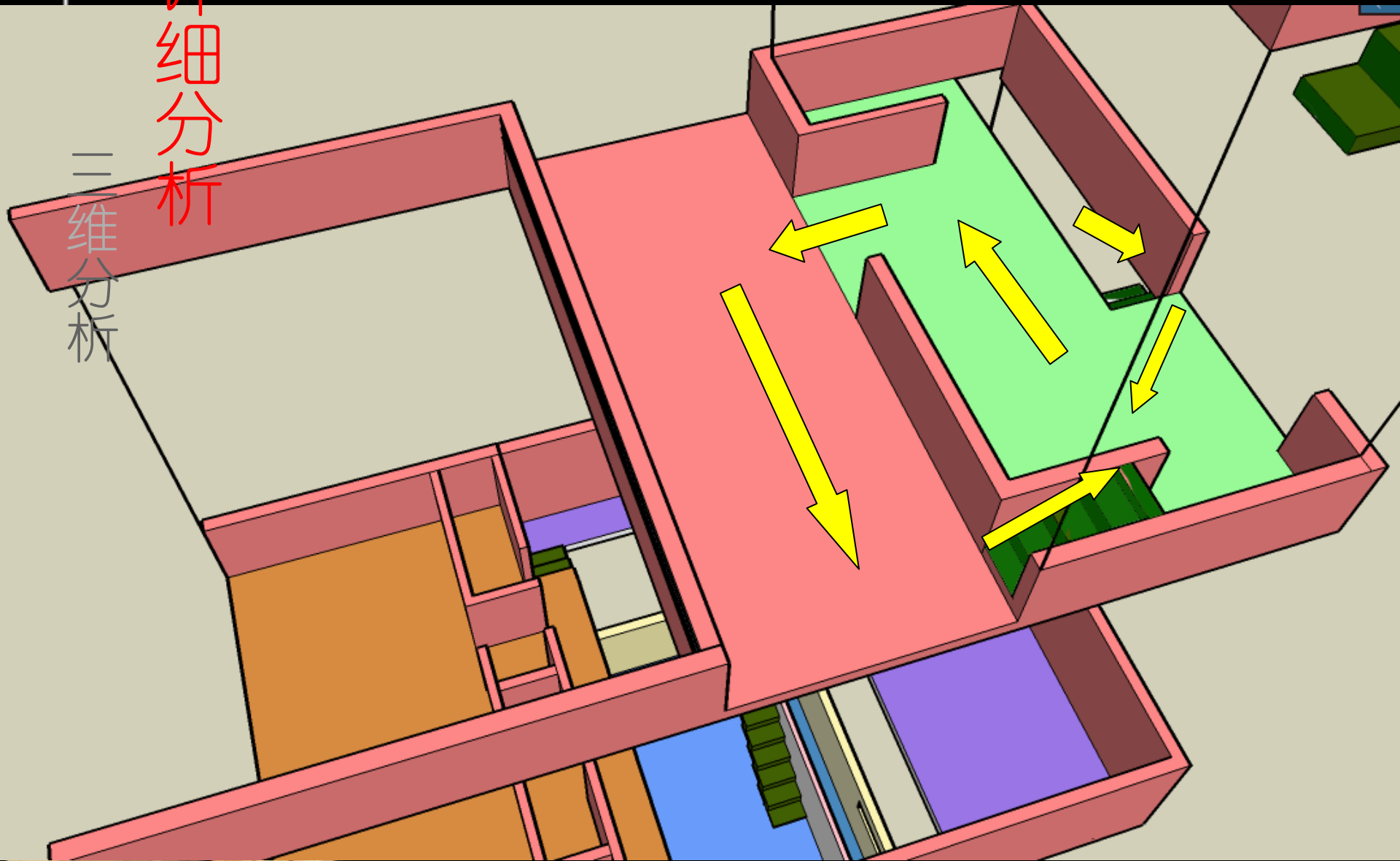
# 详细分析

三维分析



# 详细分析

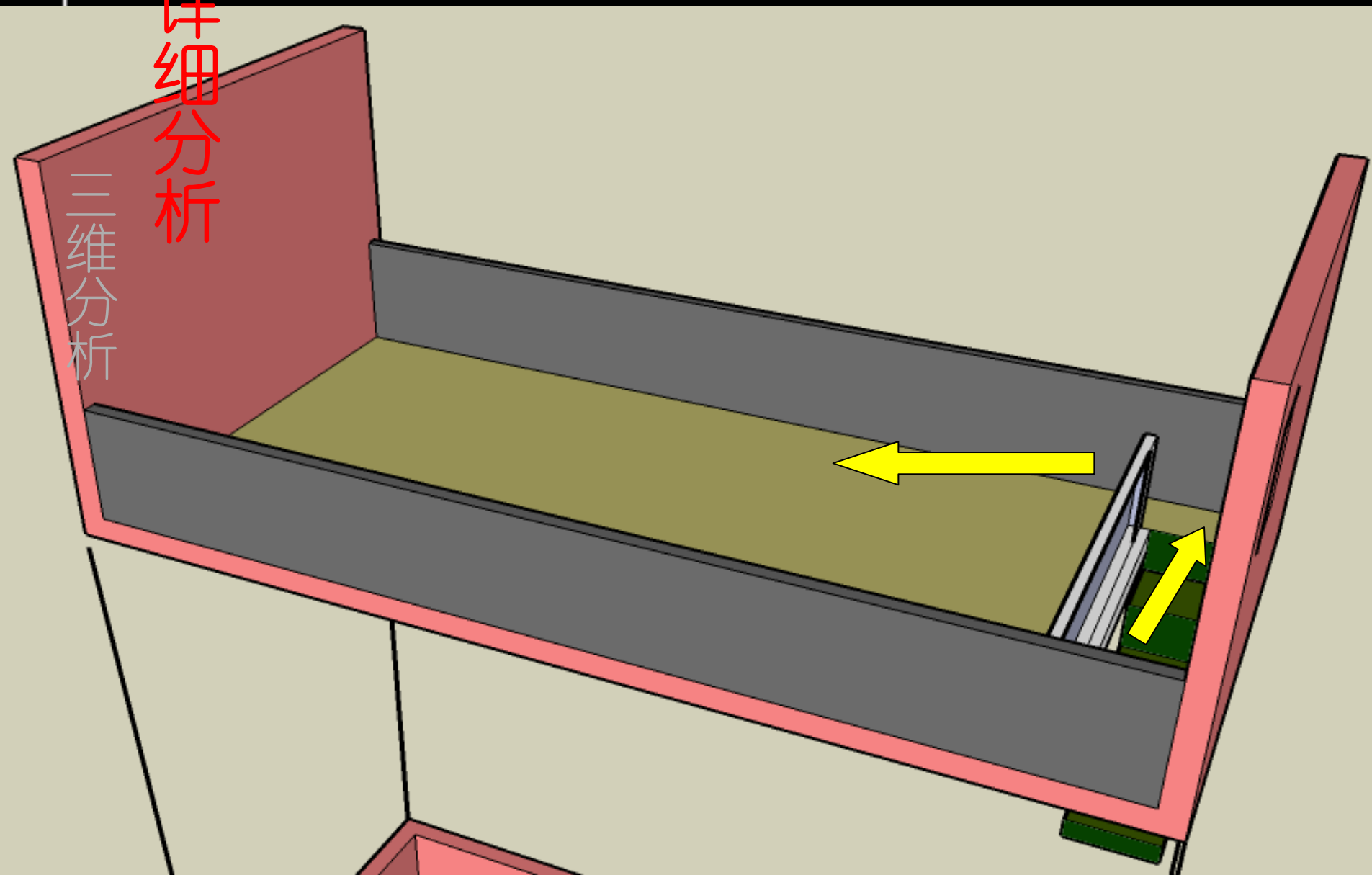
三维分析





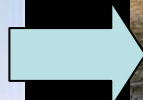
详细分析

三维分析



# 建筑特点

门洞

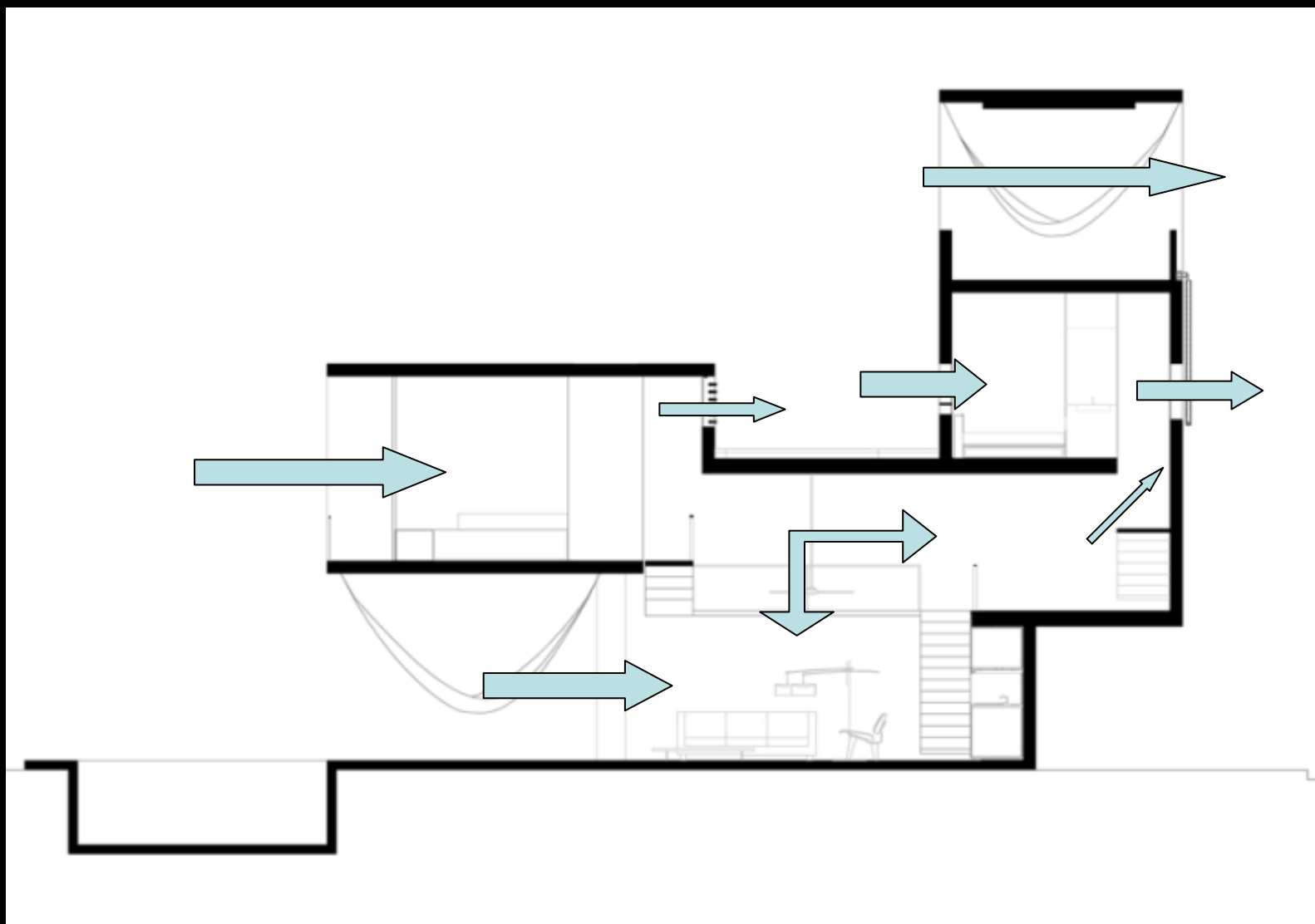


此建筑位于炎热的墨西哥海岸，是针对当地极端的气候条件而建的。一座可以完全自我开放和自我关闭的住宅。



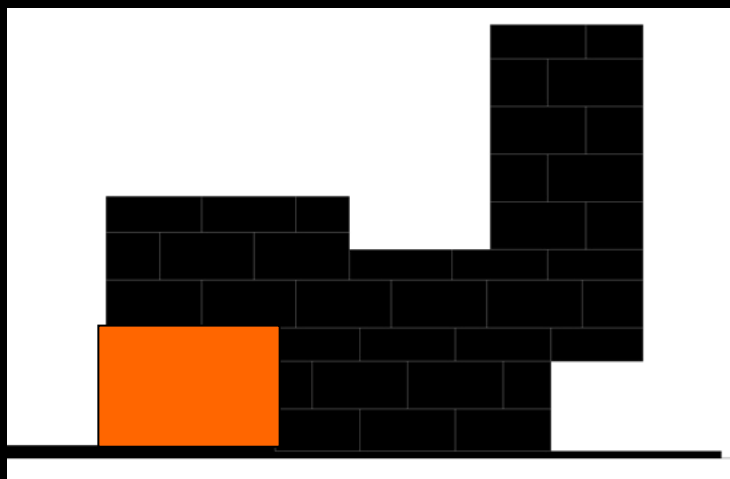
# 建筑特点

门洞



可完全开放的门洞为建筑提供了良好的通风条件，甚至省去了空调。





However the outdoor built space, the threshold under the big cantilever, is the most important space of the house, its central focus. It has all the characteristics and potential of a tailor made interior: connected with the spacious central core of the house, protected by the balance and rigor of the constructed object but at the same time supplied with light, water, and air from the outside, close to the lush tropical vegetation and its colors that contrast with the neutrality of the concrete.

——[www.ca-so.com](http://www.ca-so.com)

悬臂下的门廊空间是这所房子的一个重要空间，既与房子的核心相连，又在悬臂的庇护下与室外空间亲密接触。



# 建筑特点

经济与回收

一座低成本的住宅，并将后期维护降低到最小。这是建筑师出发点。所以就有了诸如用蚊帐代替玻璃窗等的实践。使建筑能完全自我开放和自我关闭，也省去了空调的费用。

This didactic approach was completed by an aptitude for recycling ,as the wooden form panels were reused to build the drive and the perimeter fence.

——*Domus 912#*



# 建筑特点

经济与回收



篱笆是用用剩的木头镶板做的。



座椅也是由本是用来加固的铁条改造而来。



# 建筑特点

吊床



zhulong.com



浪漫  
之风

# The Final Architectural Aim

life in community, in the open air;  
a living portrait of the vital Mexican  
utopia, that is, a world of harmony,  
color, and nature, a reflection of  
the rocking of the hammocks and  
the pleasure of the dolce far niente.

— [www.ca-so.com](http://www.ca-so.com)





# 我们的体会

- 夸张悬臂的大胆尝试
- 完全开放空间带来的全新美感与体验
- 流动空间的运用，特别是一二层间休息空间的运用
- 实用主义，与自然的完美结合



资料来源：

《Domus 912#》

事务所官方网站：<http://www.ca-so.com>

汇报人：

李睿莹 赖吉婷

指导老师：王韧 秦丹尼 张清 刘士兴



谢谢!

Thank

You!

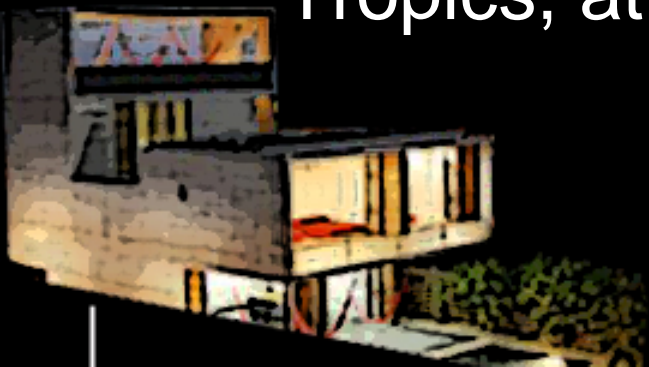


# 设计师简介



Eduardo Cadaval and Clara Solà-Morales are fellow-travellers in search of a discriminating architecture. Both were born in 1975 and form a Spanish-American alliance: Cadaval is from Mexico City, Solà-Morales from Barcelona. The theme is that of a dream-to get lost in the Tropics, at least for the length of a vacation.

——Domus 912#



# House at The Pyrenees



# Serra Mega Store

