

House for a Carpenter

Olot, Spain, 2005-2007

By 邓永良

杨志远

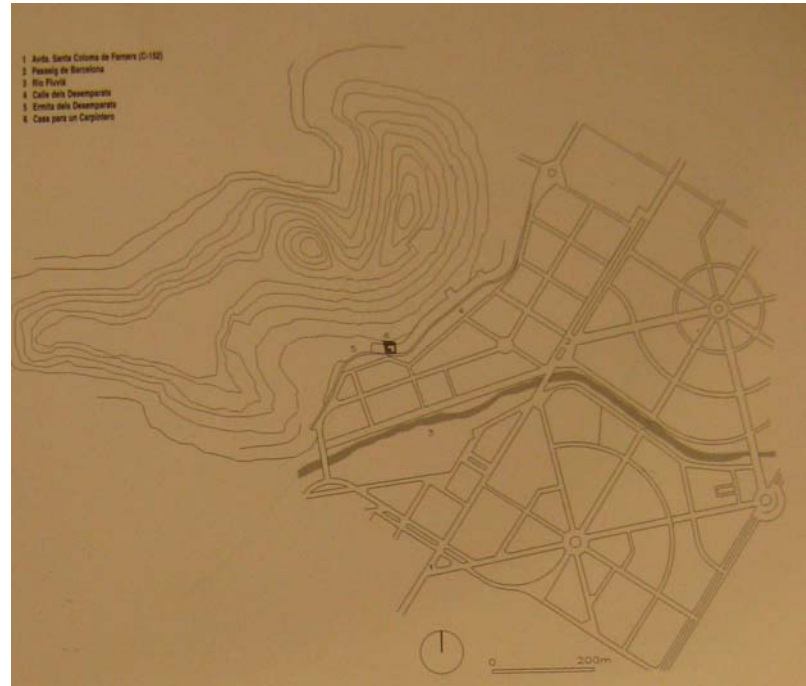


House for a Carpenter

简介:

位置: Olot, Spain

设计: RCR Architects





建筑的外立面：抛光的表面，简单的几何形体，有点夸张的造型.....





建筑与其所在的环境

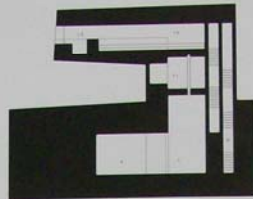
Sección por fachada / Section through facade



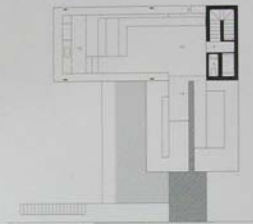
Sección longitudinal / Longitudinal section



Alzado Oeste / West elevation



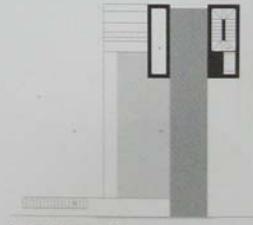
Sección transversal / Cross section



Planta nivel +8.70 / Floor level +8.70



Planta nivel +8.85 / Floor level +8.85



Planta nivel +3.85 / Floor level +3.85

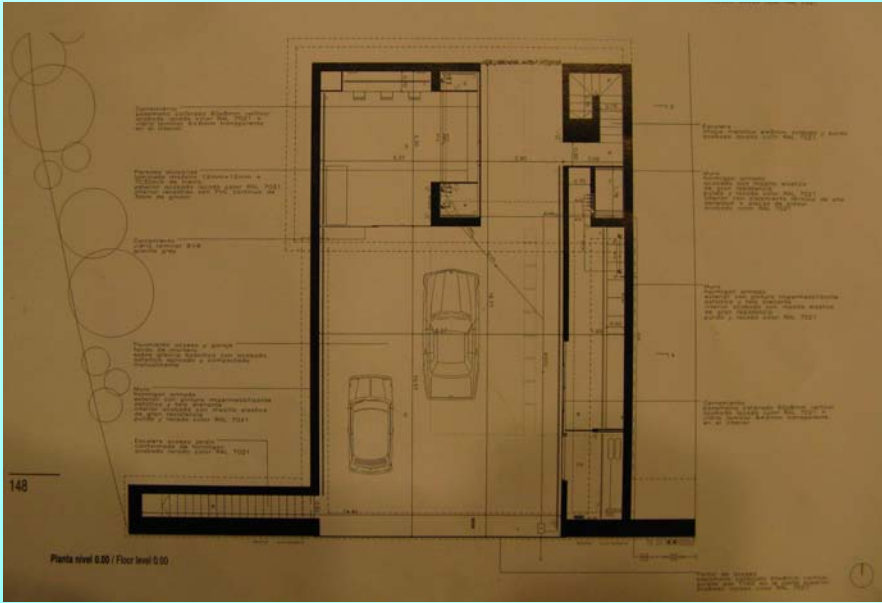


- 1. Acceso base
- 2. Garaje
- 3. Acceso Jardín
- 4. Escalera
- 5. Sala
- 6. Cocina
- 7. Lavadero
- 8. Instalaciones
- 9. Jardín
- 10. Terraza
- 11. Almacén
- 12. Oficina
- 13. Corredor
- 14. Baño
- 15. Terraza

Planta nivel 0.00 / Floor level 0.00

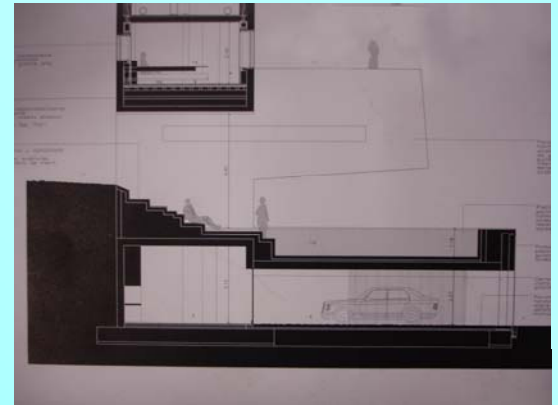
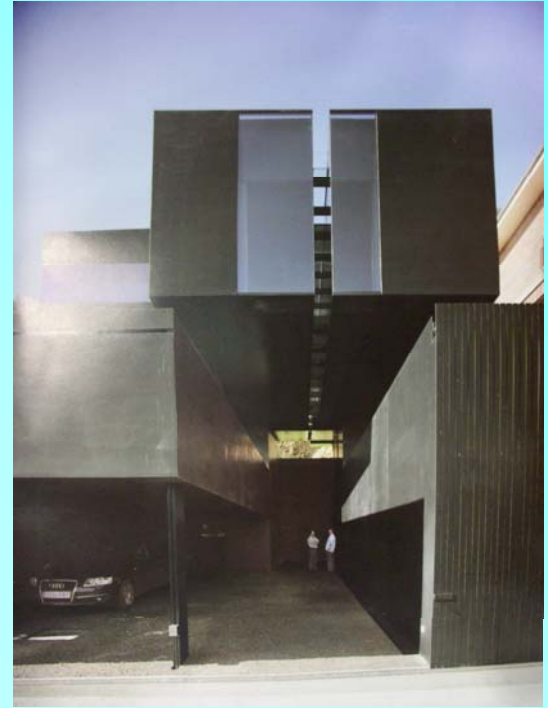
Alzado Este / East elevation

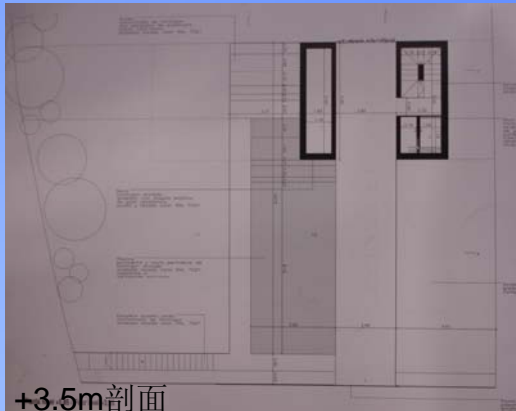




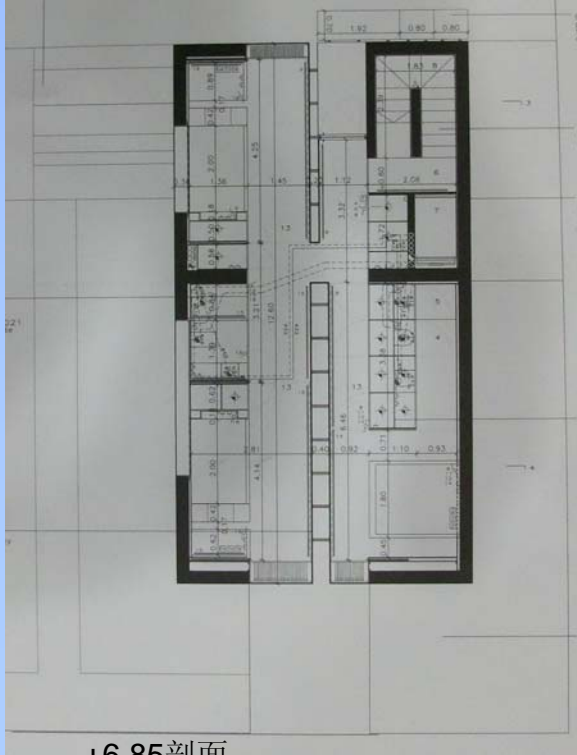
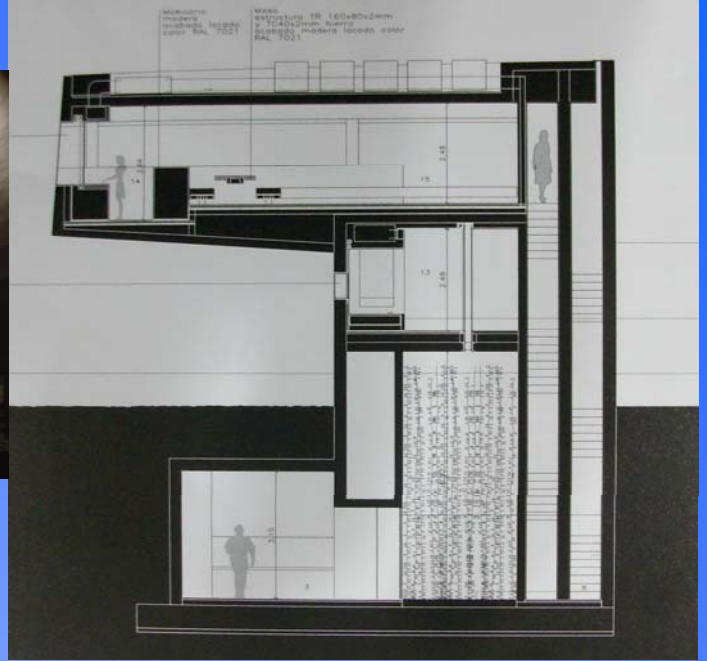
一层平面

底层有一部分埋在山体中
空间划分为三个大块





+3.5m剖面

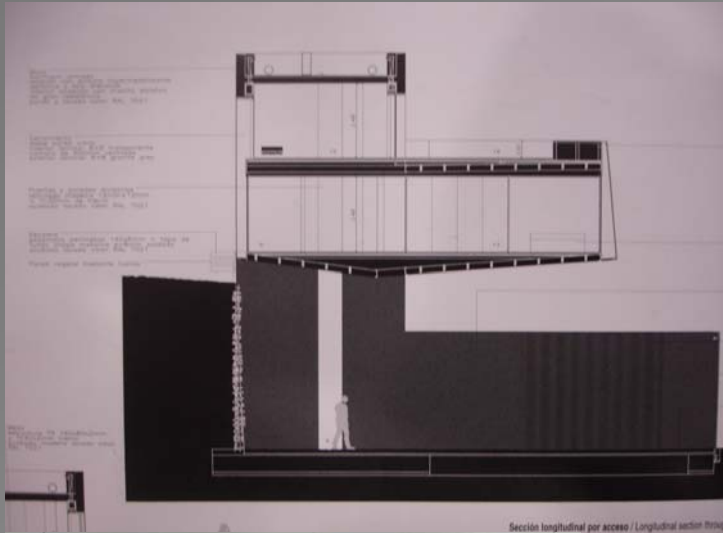


+6.85剖面

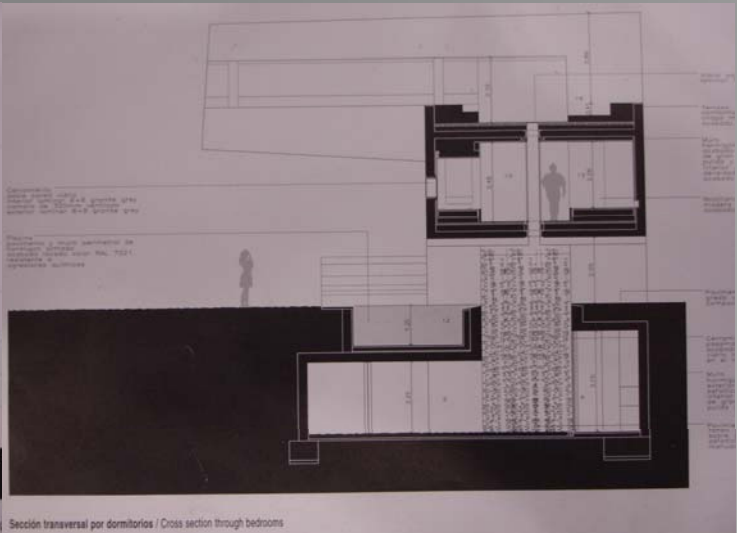
二层是起居室，两层玻璃墙晶将空间划分为两大块



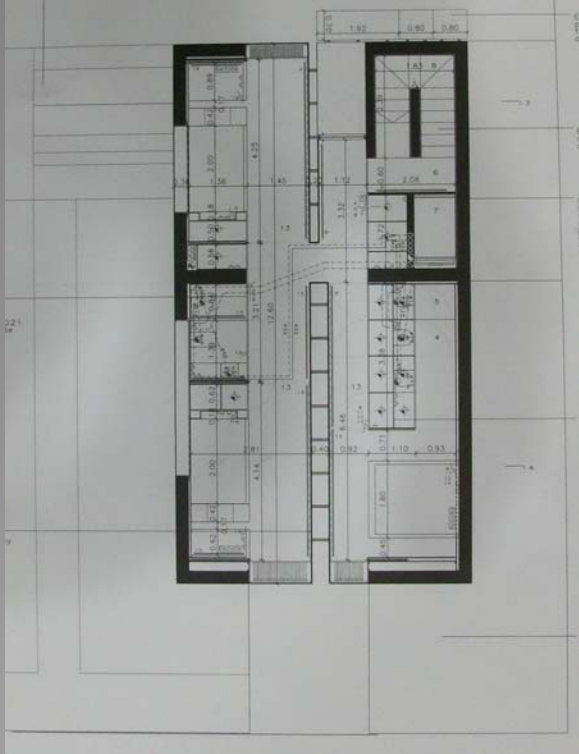
室内一如外立面的简洁；

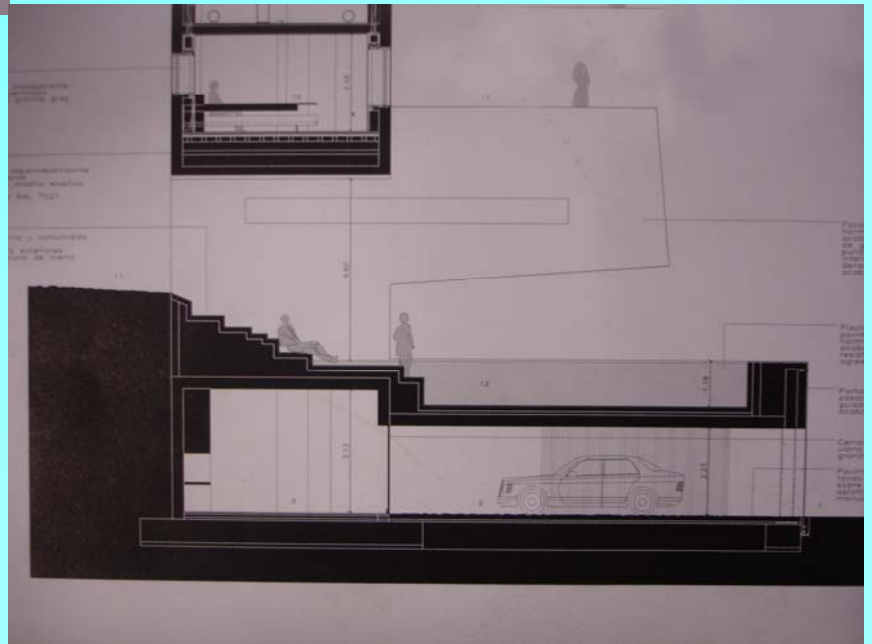
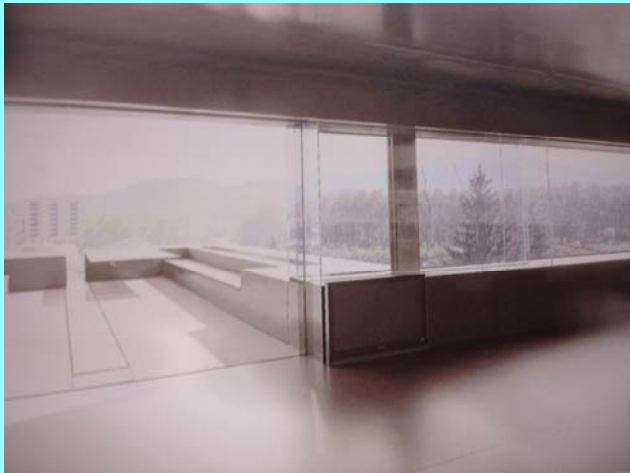
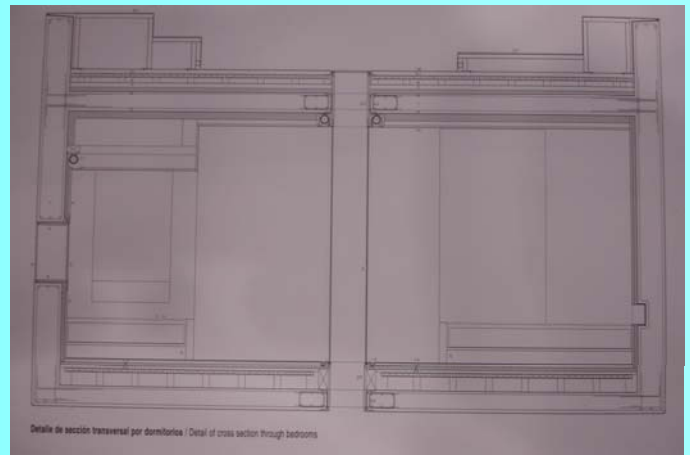
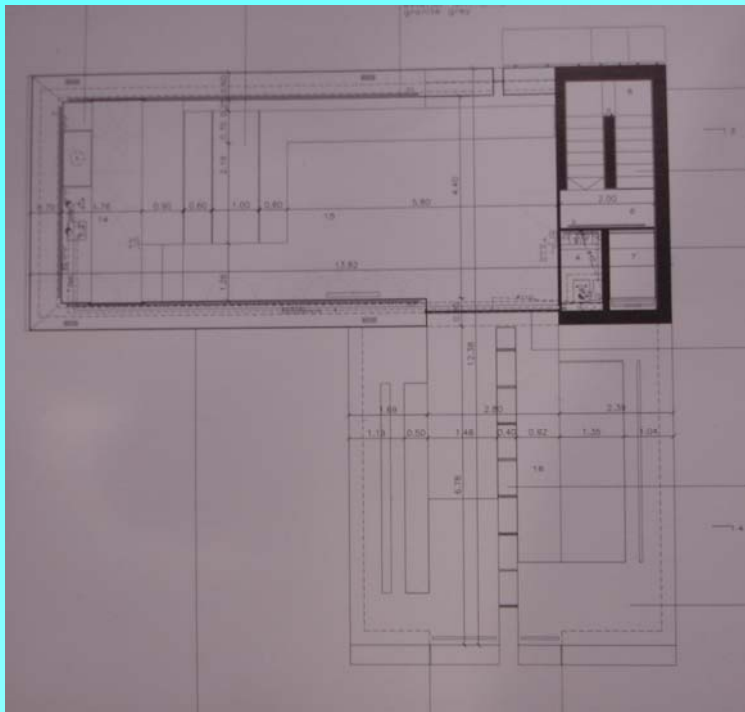


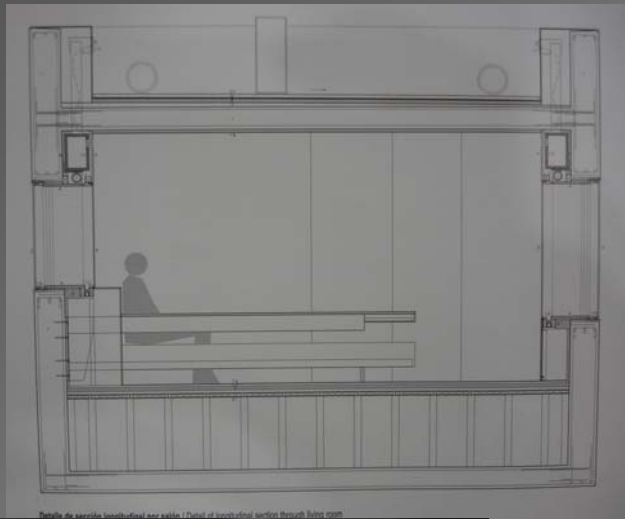
Sección longitudinal por acceso / Longitudinal section through



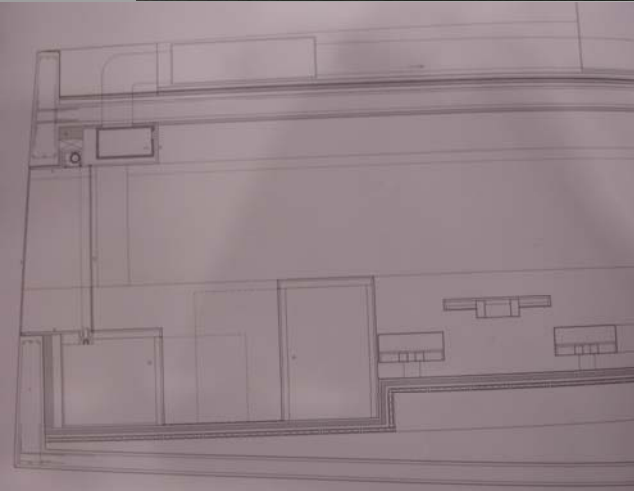
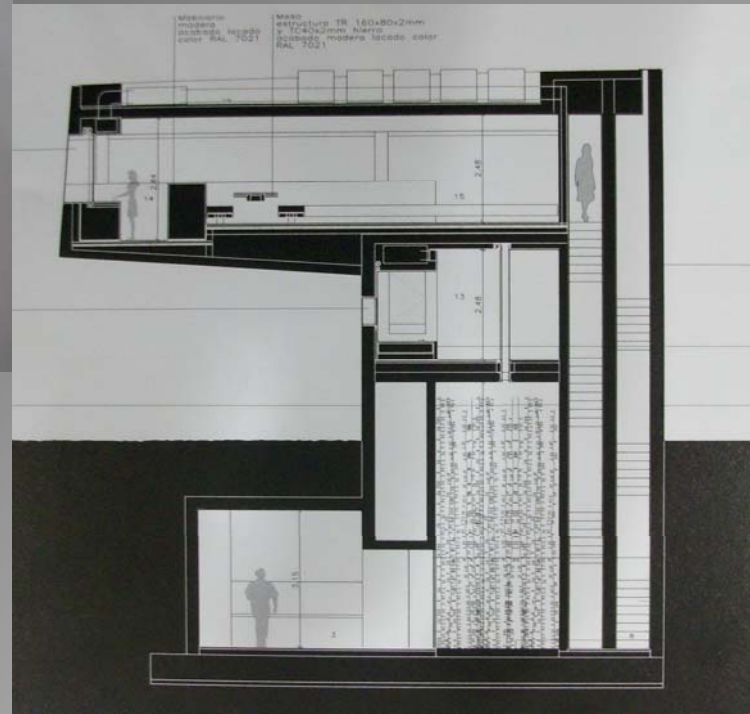
Sección transversal por dormitorios / Cross section through bedrooms








Detail of section (horizontal) and detail of section through floor zone






House 的一些特点

那一道缝.....

那两个正交的长方体.....

建筑师为什么要这样设计？只是为了标新立异？只是为了造型？抑或是.....





这道很酷的缝可以大大加强空气的对流



而且在空间的分割上起到至关重要的作用





获得更开阔的视野
大面积的玻璃窗（墙）
不仅不有利于此，而且
能引进后面山体的景观，
这对于城市化进程中的
居民来说无疑是弥足珍
贵的。

获得更充裕的空间
高效地利用空间，腾出地方
建一个花园
一个小水池



House 另外的一个特点是得简洁。室外如此，室内更是将这一风格发挥得淋漓尽致。可以说，所有的家具都成为了建筑的一部分。二层中整齐一致的分布，三层中靠墙的长椅子，简单的几何方块，抛光的质感，大面积玻璃，都使得建筑表现出简洁的魅力。



而简洁最直接的结果是获得更开阔的空间。因而可以说，充裕的空间是**House**在设计时的重要思想。

谢 谢

